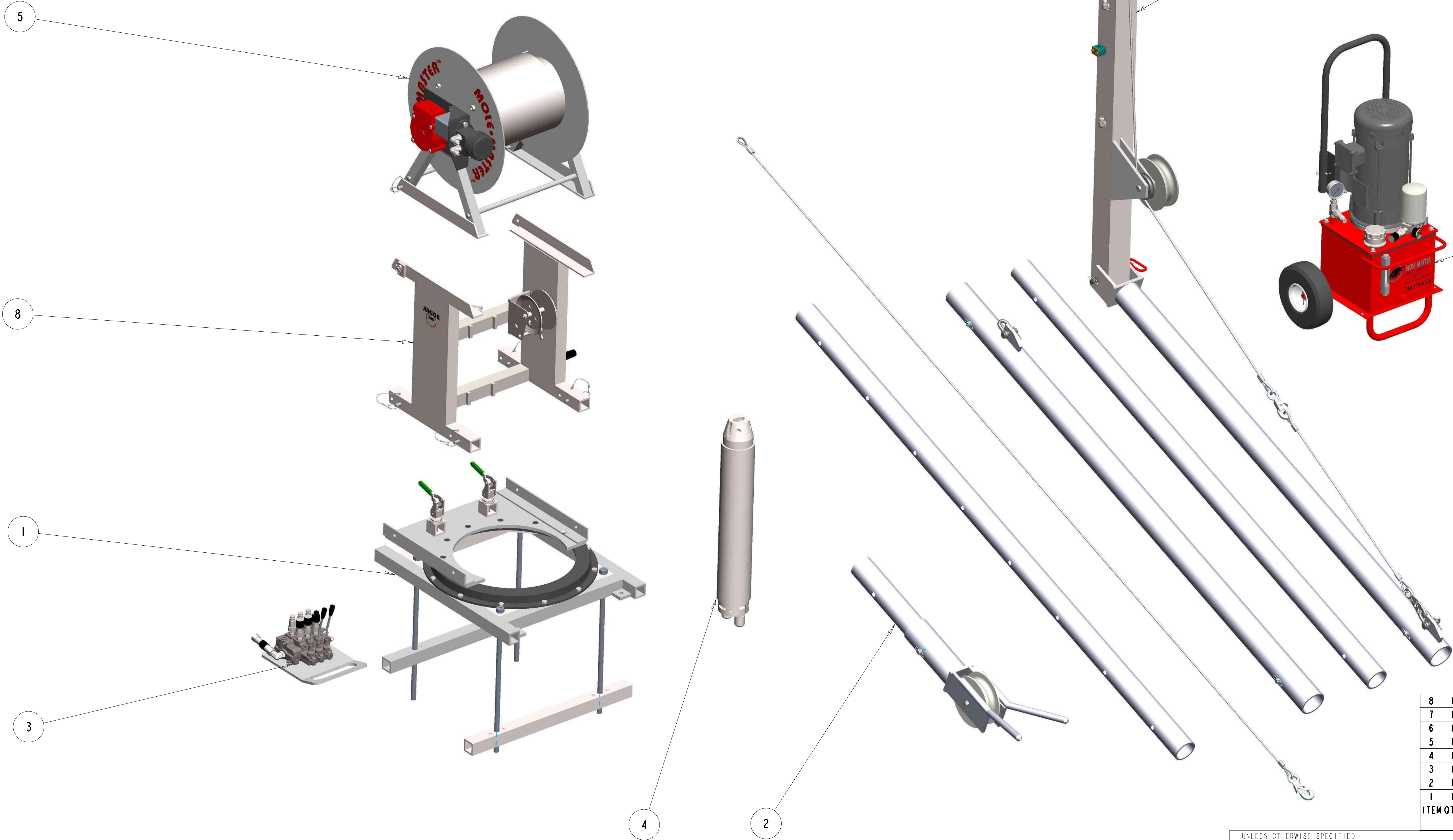


THIS MATERIAL IS THE PROPERTY OF MOLE MASTER SERVICES CORPORATION AND MAY NOT BE REPRODUCED, PUBLISHED, OR DISCLOSED TO OTHERS WITHOUT WRITTEN AUTHORIZATION AND MAY NOT BE USED IN ANY WAY AGAINST OR DETRIMENTAL TO MOLE MASTER SERVICES CORPORATION.

REVISION HISTORY			
REV	DESCRIPTION	DATE	BY
A	RVSD CONTROL VALVE PART NUMBER	01-08-20	EPP
B	UPDATE POWER UNIT MOTOR	08-12-24	EPP

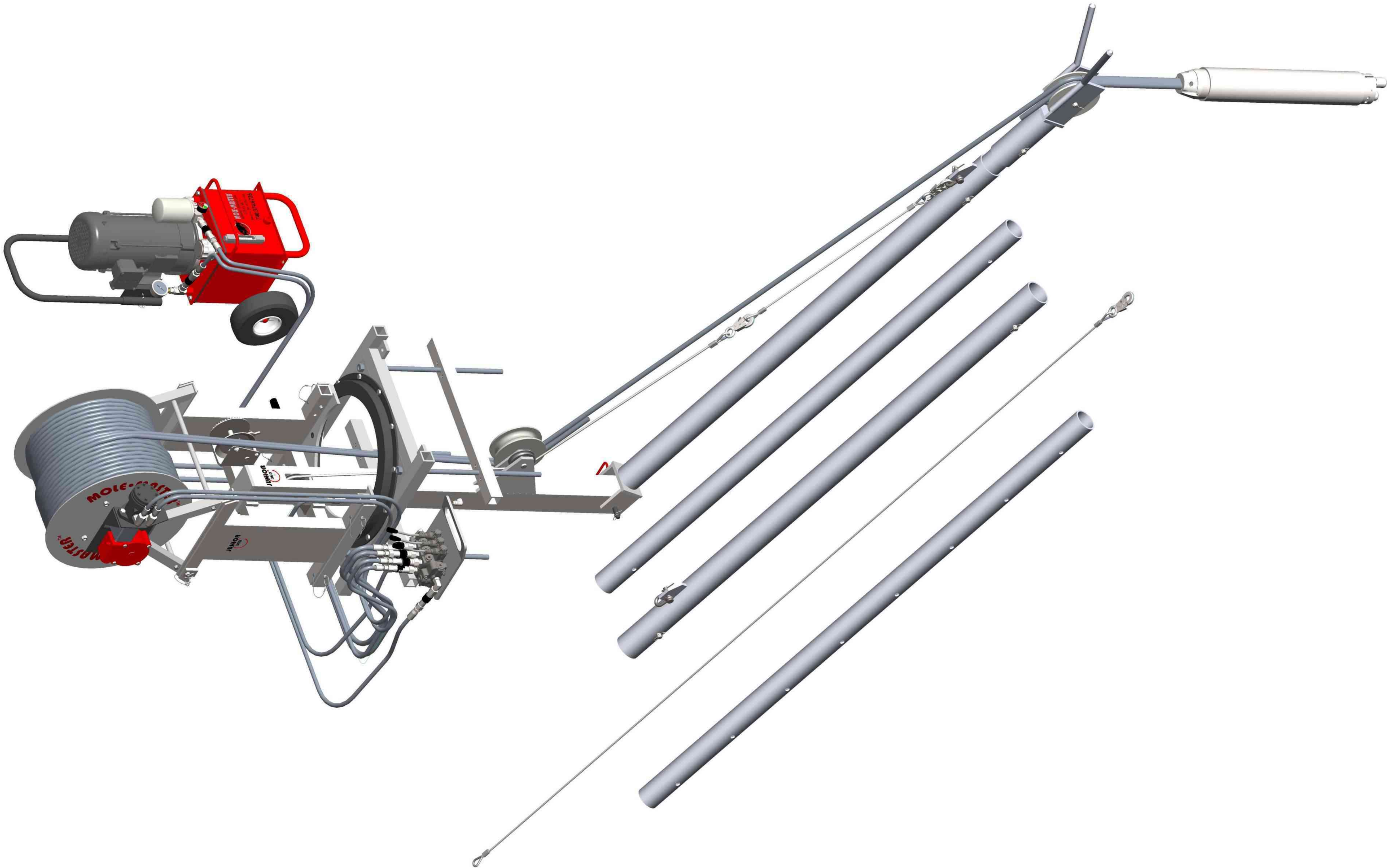



ITEM	QTY	PART NO.	DESCRIPTION
8	1	SF3001-00	UPPER SUPPORT FRAME
7	1	PU3000-00	POWER UNIT ASSEMBLY
6	1	M3000-00	MAST ASSEMBLY
5	1	HR3000-00	HOSE REEL ASSEMBLY
4	1	CH3000-00	CUTTING HEAD ASSEMBLY
3	1	CV3200-00	CONTROL VALVE ASSEMBLY
2	1	JB3000-00	BOOM ASSEMBLY
1	1	BF3000-00	BEARING FRAME ASSEMBLY

BILL OF MATERIALS			
UNLESS OTHERWISE SPECIFIED DIMENSIONS ARE IN INCHES.		TOLERANCES ARE: DECIMALS ANGLES .XX ±.01 ±2° .XXX ±.005 FRACTIONAL ±1/16	
DO NOT SCALE DRAWING			
TREATMENT	-	SIZE	D
FINISH	-	SCALE	1/8
MATERIAL	SEE BOM	SCALE	1/8
APPROVALS		DATE	12-14-12
DRAWN EPP		CHECKED	-
ENGR		ENGR	-
TITLE		HYDRAULIC JUNIOR 360° MODEL NO: JR360H MASTER PARTS LIST PL3360H-1	
REV.		B	
SHEET		OF 2	

THIS MATERIAL IS THE PROPERTY OF MOLE MASTER SERVICES CORPORATION AND MAY NOT BE REPRODUCED, PUBLISHED, OR DISCLOSED TO OTHERS WITHOUT WRITTEN AUTHORIZATION AND MAY NOT BE USED IN ANY WAY AGAINST OR DETRIMENTAL TO MOLE MASTER SERVICES CORPORATION.

REVISION HISTORY			
REV	DESCRIPTION	DATE	BY
A	RVSD CONTROL VALVE PART NUMBER	01-08-20	EPP
B	UPDATED POWER UNIT MOTOR	08-12-24	EPP



UNLESS OTHERWISE SPECIFIED DIMENSIONS ARE IN INCHES. TOLERANCES ARE: DECIMALS ANGLES .XX ±.01 ±2° .XXX ±.005 FRACTIONAL ±1/16 DO NOT SCALE DRAWING		APPROVALS		DATE	MOLE-MASTER[™] SERVICES CORPORATION 		27815 STATE ROUTE 7 MARIETTA, OHIO 45750 USA 740-374-6726	
		DRAWN	EPP	12-14-12				
		CHECKED	-	-				
		ENGR	-	-				
TREATMENT	-				TITLE HYDRAULIC JUNIOR 360° MODEL NO: JR360H MASTER PARTS LIST			
FINISH	-							
MATERIAL					SIZE D		DWG. NO. PL3360H-1	
					SCALE 1/8		REV. B	
					SHEET 2 OF 2			

THIS MATERIAL IS THE PROPERTY OF MOLE MASTER SERVICES CORPORATION AND MAY NOT BE REPRODUCED, PUBLISHED, OR DISCLOSED TO OTHERS WITHOUT WRITTEN AUTHORIZATION AND MAY NOT BE USED IN ANY WAY AGAINST OR DETRIMENTAL TO MOLE MASTER SERVICES CORPORATION.


REVISION HISTORY			
REV	DESCRIPTION	DATE	BY
A	ADDED 030141	03-07-16	EPP
B	ADDED 030154	04-11-24	EPP
C	REMOVED 030154, ADDED ANOTHER 030141	08-12-24	EPP
D	SEE REVISION NOTE	04-24-25	EPP

NOTE:
1. HYDRAULIC HOSE ASSEMBLIES THAT ARE SUPPLIED WITH HOSE REEL ARE NOT SHOWN FOR CLARITY. SEE PAGE 2.

FOR REPLACEMENT QUICK COUPLERS USE P/N: 030127, STUCCHI COUPLING SET

46	1	HR3009-01	TERN GEAR REDUCER
45	1	HR3000-031	SWIVEL FITTING
44	1	HR2003-00	MOTOR MOUNTING BRACKET WELDMENT
43	1	030116	LOVEJOY-SPIDER COUPLING-L090/L095SOX
42	1	030117	LOVEJOY COUPLER-L095X3/4HUB3/16
41	1	030118	LOVEJOY COUPLER-L095X1HUB1/4
40	1	030137	HYDRAULIC MOTOR
39	1	HR3006-00	HOSE REEL END
38	1	HR3005-00	HOSE REEL END
37	1	HH1920-00	HOSE ASSY, #8M3K, (2) 165'-0" LGTH, (1) HG-28, SLEEVE
36	1	HH0144-00	HOSE ASSEMBLY, 144" LG, HOSE REEL SWIVEL SIDE
35	1	HH0140-00	HOSE ASSEMBLY, 140" LG, HOSE REEL MOTOR SIDE
34	1	HR3002-00	FRAME, SWIVEL SIDE
33	1	HR3001-00	FRAME, DRIVE SIDE
32	2	HR3003-01	FRAME CONNECTING ROD
31	1	HR3004-01	DRUM, HOSE REEL
30	4	HR3008-00	DRUM TIE ROD
29	1	HR3007-00	DRIVE SHAFT WELDMENT
28	1	HR2000-02	COUPLING GUARD
27	2	020113	8MJ-8FJX45, MALE JIC-FEMALE JIC SWIVEL 45° EL HYD ADPT
26	2	020114	8MB-8MJ90, MALE O RING BOSS-MALE JIC 90° EL HYD ADPT
25	2	020108	6MB-8MJ, MALE O RING BOSS-MALE JIC HYD ADAPTER
24	4	010137	3/8", SPLIT LOCK WASHER, ZP
23	4	010117	3/8-16 X 1", HHCS, GR. 5, ZP
22	2	010113	3/16", BLIND POP-RIVET, BUTTON HEAD, ALUM
21	1	010108	3/16" SQUARE X 1-1/4" L, MACHINE KEY, STL
20	2	020115	10MB-8MJ90, MALE O RING BOSS-MALE JIC 90° EL HYD ADPT
19	2	010109	1/4" SQUARE X 1" L, MACHINE KEY, STL
18	1	010110	1/4" SQUARE X 1-1/4" L, MACHINE KEY, STL
17	2	010156	1/4" MALE NPT, SKT PIPE PLUG, 3/4 TAPER, STL
16	2	010126	1/4-20 X 1/4", SKT. SET SCR, CUP PT, BLK. OXIDE
15	2	010127	1/4-20 X 1/2", SKT. SET SCR, CUP PT, BLK. OXIDE
14	2	010114	1/4-20 X 1/2", HHCS, GR. 5, ZP
13	2	010138	1/2", SPLIT LOCK WASHER, ZP
12	4	010132	1/2", FLAT WASHER, SAE, ZP
11	2	010158	1/2" X 2-1/2", DETENT RING PIN
10	6	010140	1/2-13, HEX NUT, GR. A, ZP
9	4	010143	1/2-13, ACORN NUT, NICKEL PLT
8	6	010120	1/2-13 X 1-1/2", HHCS, GR. 5, ZP
7	1	010111.1	1/16" X 6", BARE CABLE, STEEL LANYARD
6	1	010111	1/16" X 6", BARE CABLE, STEEL LANYARD
5	3	020200	1-1/4 ID x 1-1/2 OD x 1/8 O-RING
4	4	020201	1-1/4 ID x 1-1/2 OD x .050 FLAT GASKET
3	2	030123	1-1/2", PILLOW BLOCK BEARING
2	2	010107	1-1/2" ID, EXTERNAL SPIRAL RING, MED DUTY, STL
1	1	010134	1-1/2" ID X 3/4" W, CLAMPING COLLAR, ZP
ITEM	QTY	PART NO.	DESCRIPTION

BILL OF MATERIALS

UNLESS OTHERWISE SPECIFIED DIMENSIONS ARE IN INCHES.	TOLERANCES ARE: DECIMALS ANGLES .XX ±.01 ±2° .XXX ±.005 ±1/16 FRACTIONAL		APPROVALS		DATE	MOLE-MASTER™ SERVICES CORPORATION		27815 STATE ROUTE 7 MARIETTA, OHIO 45750 USA 740-374-6726							
	DO NOT SCALE DRAWING		DRAWN	EPP	12-14-12			TITLE	HYDRAULIC JUNIOR 360° MODEL NO: JR360H HOSE REEL ASSEMBLY						
	TREATMENT	-	ENGR	-	-			SIZE	D	DWG NO.	PL3360H-2	REV.	D		
	FINISH	-	-	-	-			SCALE	1/4	CNC	WT	ACT	WT	SHEET	1 OF 1
	MATERIAL	SEE BOM	-	-	-			-	-	-	-	-	-	-	-



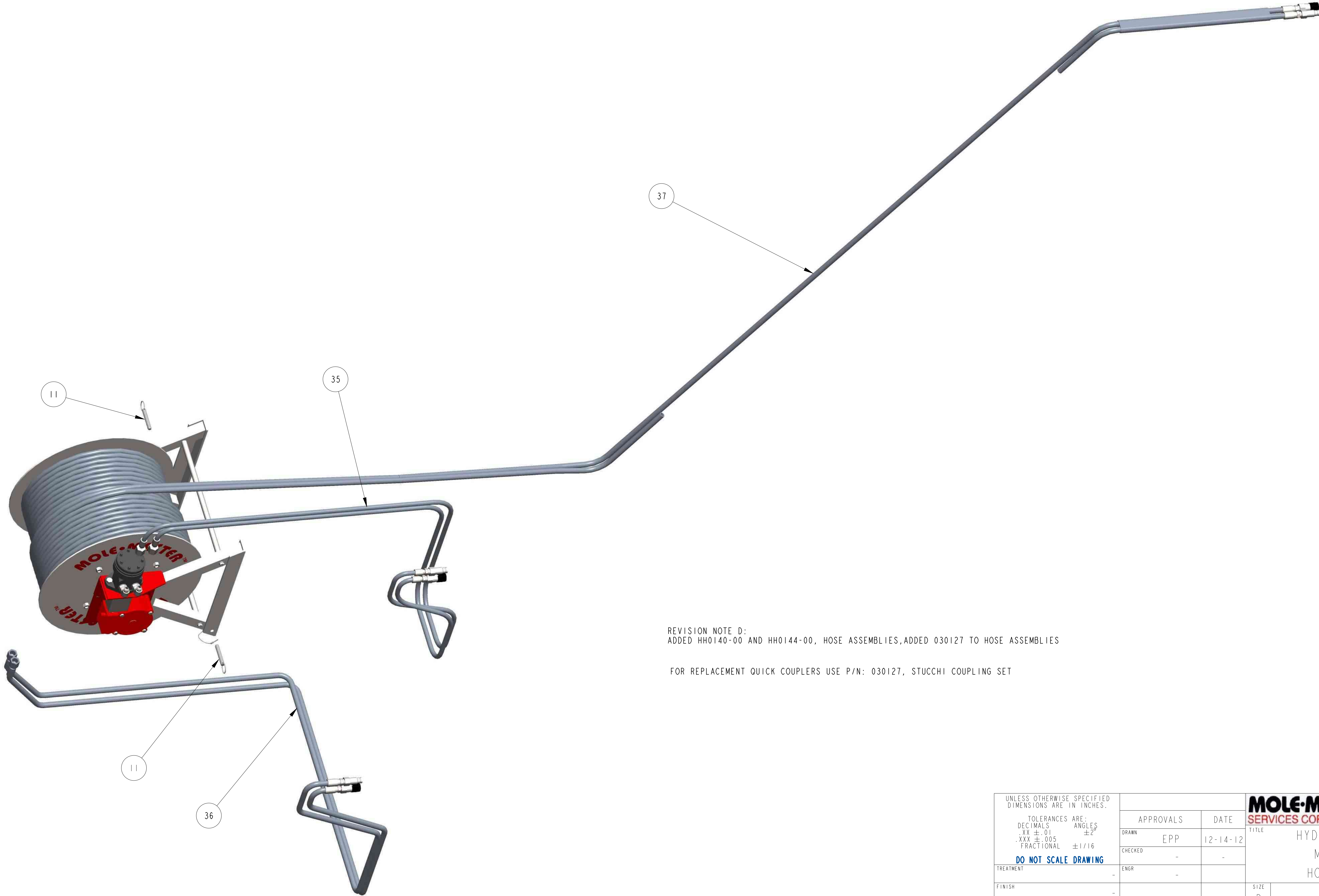
27815 STATE ROUTE 7
MARIETTA, OHIO 45750 USA
740-374-6726

TITLE
HYDRAULIC JUNIOR 360°
MODEL NO: JR360H
HOSE REEL ASSEMBLY

REVISION NOTE D:
ADDED HH0140-00 AND HH0144-00, HOSE ASSEMBLIES,ADDED 030127 TO HOSE ASSEMBLIES


THIS MATERIAL IS THE PROPERTY OF MOLE MASTER SERVICES CORPORATION AND MAY NOT BE REPRODUCED, PUBLISHED, OR DISCLOSED TO OTHERS WITHOUT WRITTEN AUTHORIZATION AND MAY NOT BE USED IN ANY WAY AGAINST OR DETRIMENTAL TO MOLE MASTER SERVICES CORPORATION.

REVISION HISTORY			
REV	DESCRIPTION	DATE	BY
A	ADDED 030141	03-07-16	EPP
B	ADDED 030154	04-11-24	EPP
C	REMOVED 030154, ADDED ANOTHER 030141	08-14-24	EPP
D	SEE REVISION NOTE	04-24-25	EPP

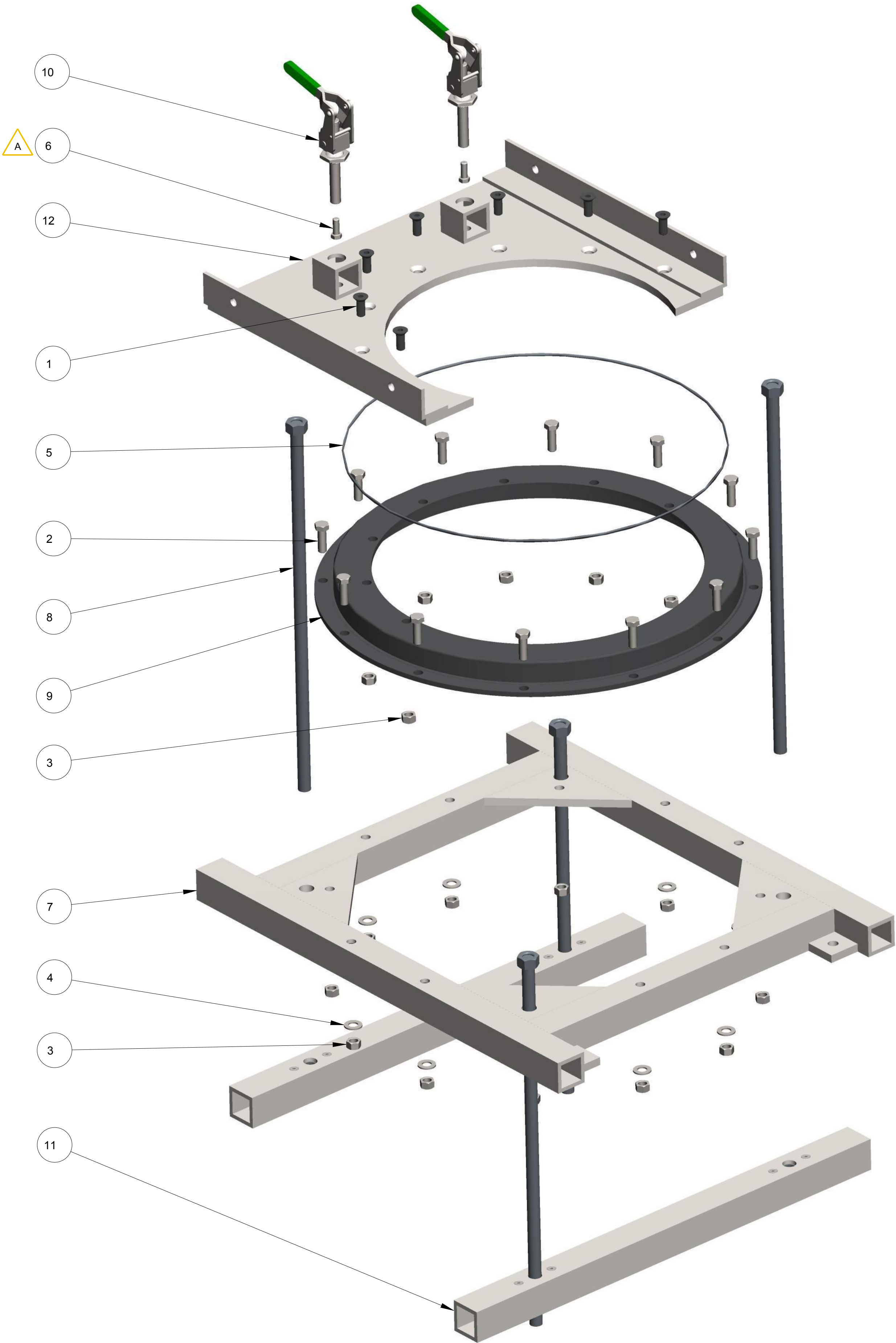


REVISION NOTE D:
ADDED HH0140-00 AND HH0144-00, HOSE ASSEMBLIES,ADDED 030127 TO HOSE ASSEMBLIES

FOR REPLACEMENT QUICK COUPLERS USE P/N: 030127, STUCCHI COUPLING SET

UNLESS OTHERWISE SPECIFIED DIMENSIONS ARE IN INCHES. TOLERANCES ARE: DECIMALS .XX ±.01 .XXX ±.005 FRACTIONAL ±1/16 DO NOT SCALE DRAWING	APPROVALS		DATE		MOLE-MASTER™ SERVICES CORPORATION  27815 STATE ROUTE 7 MARIETTA, OHIO 45750 USA 740-374-6726
	DRAWN EPP		12-14-12		
	CHECKED -		-		
	ENGR -		-		
TREATMENT	-				TITLE HYDRAULIC JUNIOR 360° MODEL NO: JR360H HOSE REEL ASSEMBLY
FINISH	-				
MATERIAL					
SIZE D		D		DWG NO. PL3360H-2	REV. D
SCALE 3/20		CALC. WT		ACT. WT	SHEET 2 OF 2

THIS MATERIAL IS THE PROPERTY OF MOLE MASTER SERVICES CORPORATION AND MAY NOT BE REPRODUCED, PUBLISHED, OR DISCLOSED TO OTHERS WITHOUT WRITTEN AUTHORIZATION AND MAY NOT BE USED IN ANY WAY AGAINST OR DETRIMENTAL TO MOLE MASTER SERVICES CORPORATION.



REVISION HISTORY			
REV	DESCRIPTION	DATE	BY
A	ADDED (2) 010117 TO BOM	03-12-14	EPP

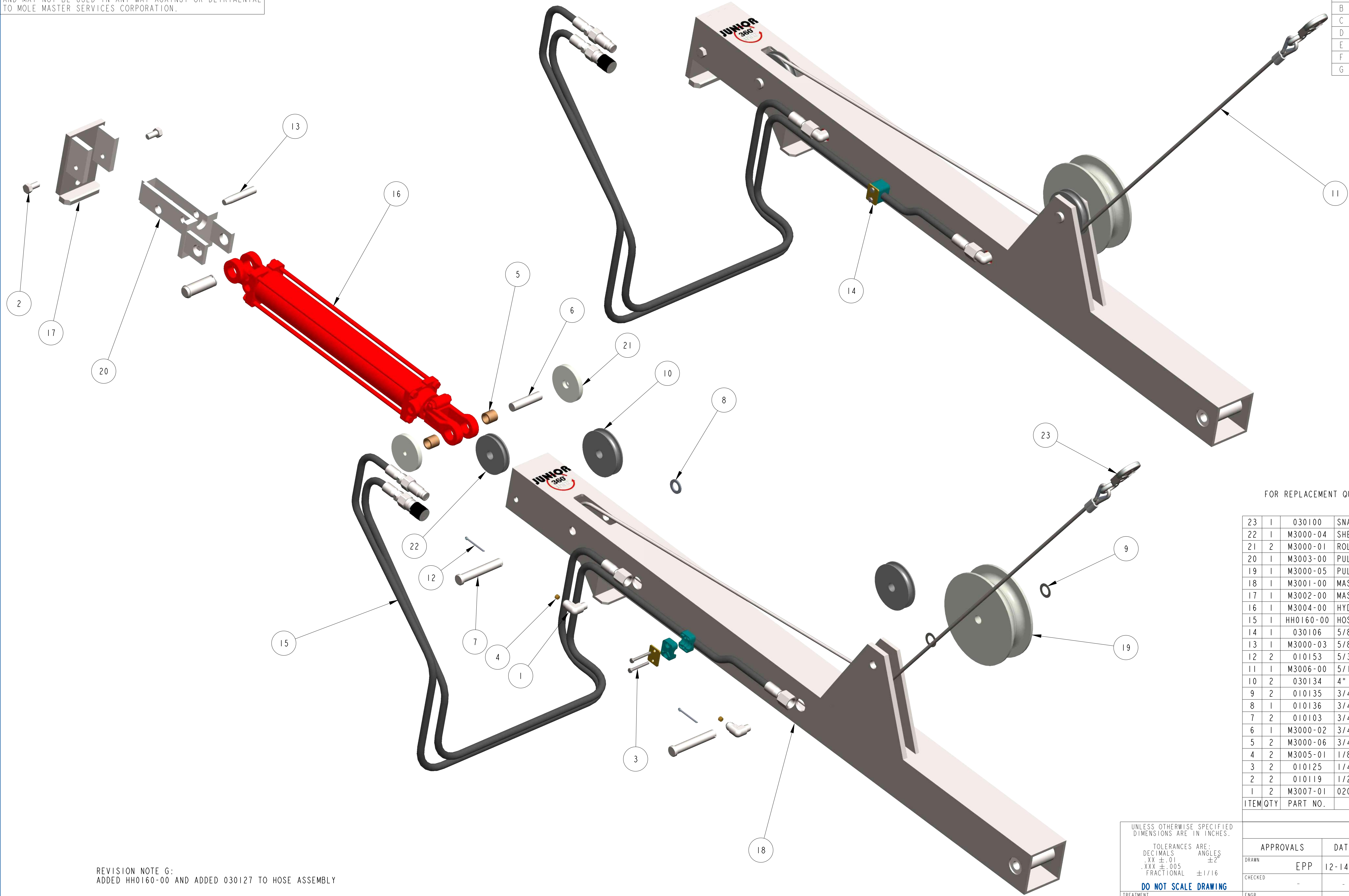
12	1	BF3001-00	UPPER SUPPORT
11	2	BF2003-00	UNDER ROOF LOCKING BAR ASS'Y
10	2	030107	PLUNGER TOGGLE CLAMP
9	1	4001	MAIN ROTATION BEARING
8	4	BF2004-00	LOCKING BAR ATTACHMENT BOLT
7	1	BF2002-00	BEARING SUPPORT
6	2	010117	3/8-16 X 1", HHCS, GR. 5, ZP
5	1	020205	22" ID X .210" CS BUNA O-RING, VULCANIZE
4	8	010132	1/2", FLAT WASHER, SAE, ZP
3	19	010140	1/2-13, HEX NUT, GR. A, ZP
2	12	010120	1/2-13 X 1-1/2", HHCS, GR. 5, ZP
1	7	010124	1/2-13 X 1-1/2", FHSCS, BLK. OXIDE
ITEM	QTY	PART NO.	DESCRIPTION

A

UNLESS OTHERWISE SPECIFIED DIMENSIONS ARE IN INCHES. TOLERANCES ARE: DECIMALS ANGLES .XX± .01 ±2° .XXX± .005 FRACTIONAL ± 1/16 DO NOT SCALE DRAWING		APPROVALS		DATE		<div><div>27815 STATE ROUTE 7 MARIETTA, OHIO 45750 USA 740-374-6726</div><div>MOLE-MASTER SERVICES CORPORATION</div><div>TITLE HYDRAULIC JUNIOR 360 MODEL NO: JR360H BEARING FRAME ASSEMBLY</div></div>							
		DRAWN EPP		12-14-12									
		CHECKED -		-									
		ENGR											
TREATMENT -						SIZE D		DWG NO. PL3360H-3		REV. A			
FINISH -						SCALE 1/4		CALC. WT		ACT. WT		SHEET 1 OF 1	
MATERIAL SEE BOM													

THIS MATERIAL IS THE PROPERTY OF MOLE MASTER SERVICES CORPORATION AND MAY NOT BE REPRODUCED, PUBLISHED, OR DISCLOSED TO OTHERS WITHOUT WRITTEN AUTHORIZATION AND MAY NOT BE USED IN ANY WAY AGAINST OR DETRIMENTAL TO MOLE MASTER SERVICES CORPORATION.

REVISION HISTORY			
REV	DESCRIPTION	DATE	BY
A	M3007-01 WAS 020100	03-05-14	EPP
B	CREATED M3006-00, CABLE ASSEMBLY	11-30-15	EPP
C	ADDED 020119 TO BOM	12-09-16	EPP
D	MOVED 010148 FROM JB3000-00	07-22-19	EPP
E	RVSD DESCRIPTION OF M3000-04	01-08-20	EPP
F	030100 WAS 010148	04-13-20	EPP
G	SEE REVISION NOTE	04-24-25	EPP



FOR REPLACEMENT QUICK COUPLERS USE P/N: 030127, STUCCHI COUPLING SET

23	1	030100	SNAP HOOK WITH DOUBLE SAFETY LATCH
22	1	M3000-04	SHEAVE, 3-1/2"OD, 3/8" ROPE, 3/4" BUSHING
21	2	M3000-01	ROLLER
20	1	M3003-00	PULLEY/CYLINDER MOUNT
19	1	M3000-05	PULLEY, DOUBLE SPOOL
18	1	M3001-00	MAST TUBE
17	1	M3002-00	MAST TOP CAP WELDMENT
16	1	M3004-00	HYDRAULIC TIE-ROD CYLINDER
15	1	HH0160-00	HOSE ASSEMBLY, 160" & 140" LG, MAST
14	1	030106	5/8" TUBE CLAMP
13	1	M3000-03	5/8" OD TAPERED DOWEL PIN
12	2	010153	5/32" x 2", COTTER PIN, ZP
11	1	M3006-00	5/16" GALV AIRCRAFT CABLE ASSEMBLY, 165" LG
10	2	030134	4" OD, 1/2" ROPE SHEEVE WITH 3/4" BUSHING
9	2	010135	3/4", MACHINERY BUSHING, 18 GA., PLN FIN
8	1	010136	3/4", MACHINERY BUSHING, 10 GA., PLN FIN
7	2	010103	3/4" X 4-1/2", CLEVIS PIN, ZP
6	1	M3000-02	3/4" x 3-1/8" STEEL DOWEL PIN, ZP
5	2	M3000-06	3/4" ID x 1" OD x 15/16" LG, BUSHING, BRONZE
4	2	M3005-01	1/8" NPT BRASS SOCKET HEAD PIPE PLUG W/ ORIFICE
3	2	010125	1/4-20 X 2", HHCS, GR. 5, ZP
2	2	010119	1/2-13 X 1", HHCS, GR. 5, ZP
1	2	M3007-01	020100,8MJ-6MP90, MODIFIED- 90° ELBOW
ITEM	QTY	PART NO.	DESCRIPTION

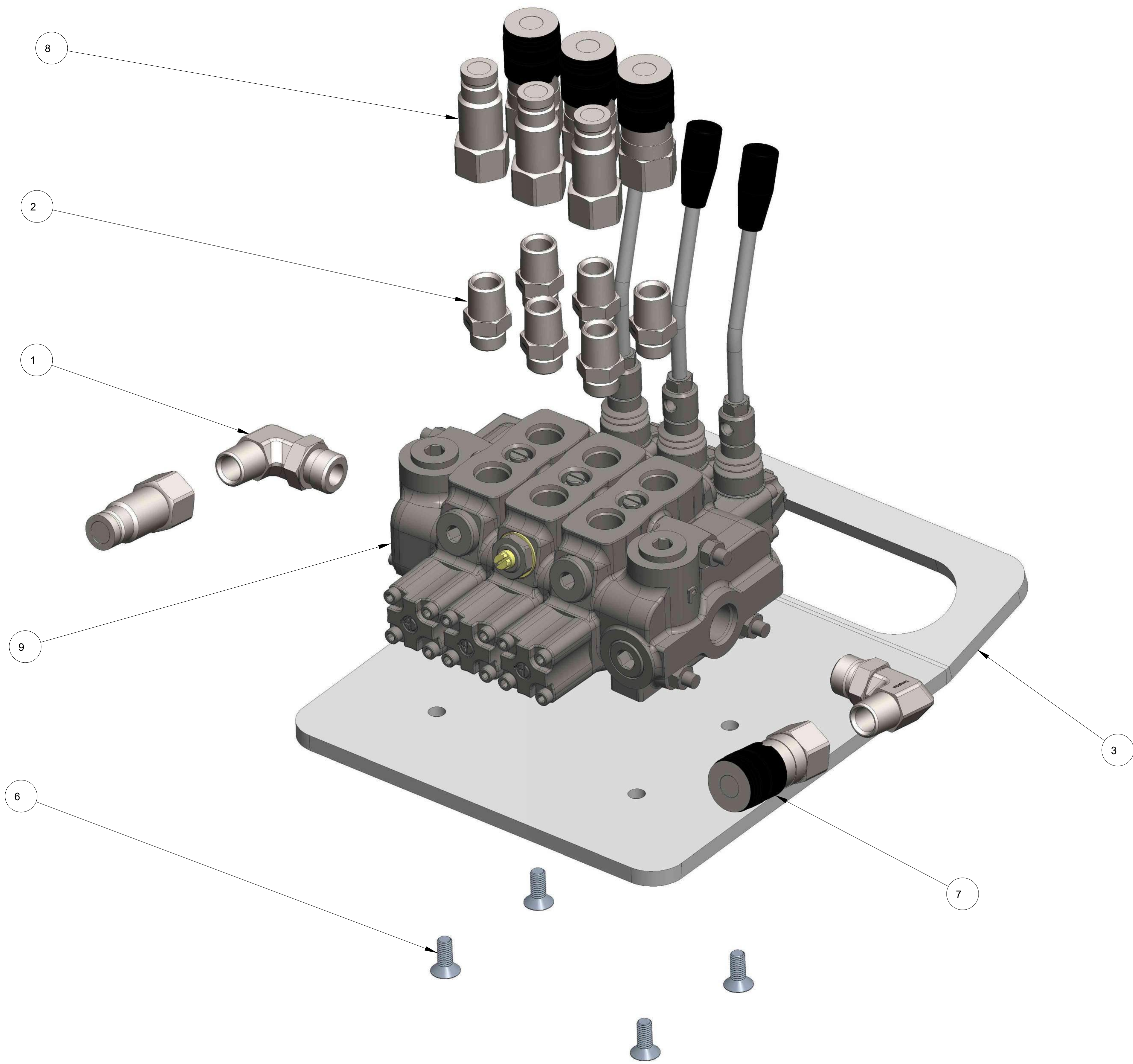
REVISION NOTE G:
ADDED HH0160-00 AND ADDED 030127 TO HOSE ASSEMBLY

UNLESS OTHERWISE SPECIFIED DIMENSIONS ARE IN INCHES.	
TOLERANCES ARE:	
DECIMALS	ANGLES
.XX ±.01	±2°
.XXX ±.005	
FRACTIONAL	±1/16
DO NOT SCALE DRAWING	
TREATMENT	
FINISH	
MATERIAL	
SEE B	

APPROVALS		DATE	27815 STATE ROUTE 7 MARIETTA, OHIO 45750 USA 740-374-6726	
DRAWN	EPP	12-14-12	TITLE	
CHECKED	-	-	HYDRAULIC JUNIOR 360°	
ENGR	-	-	MODEL NO: JR360H	
			MAST ASSEMBLY	
			SIZE	REV.
			D	G
			SCALE	DWG NO.
			1/4	PL3360H-4
			CALC. WT	SHEET
			1	1

THIS MATERIAL IS THE PROPERTY OF MOLE MASTER SERVICES CORPORATION AND MAY NOT BE REPRODUCED, PUBLISHED, OR DISCLOSED TO OTHERS WITHOUT WRITTEN AUTHORIZATION AND MAY NOT BE USED IN ANY WAY AGAINST OR DETRIMENTAL TO MOLE MASTER SERVICES CORPORATION.

REVISION HISTORY			
REV	DESCRIPTION	DATE	BY
A	VALVE RVSD FROM PARKER TO YOULI	01-08-20	EPP



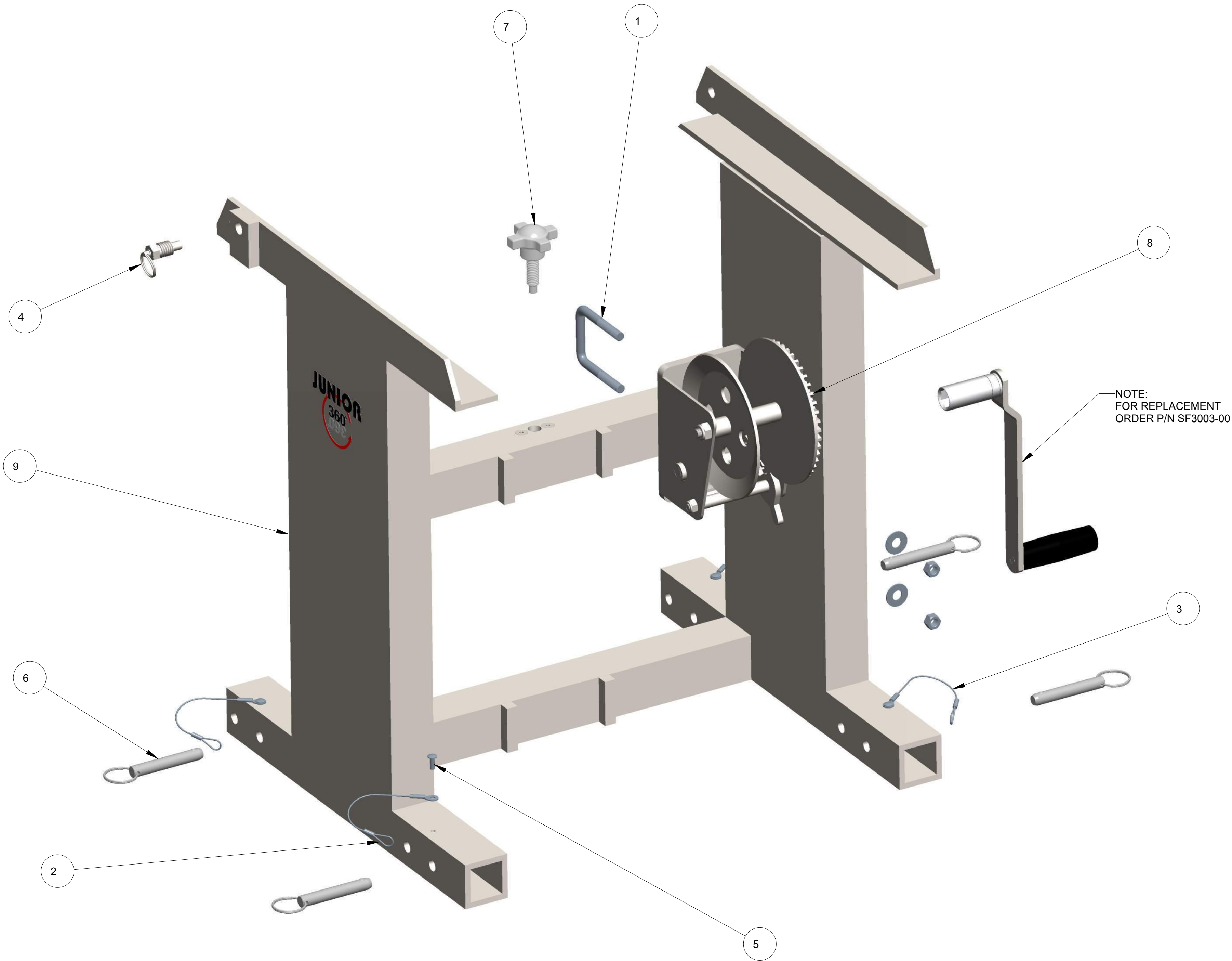
NOTE:
1. HYDRAULIC HOSE ASSEMBLIES ARE NOT SHOWN FOR CLARITY.
2. QUICK COUPLINGS THAT CONNECT TO HYDRAULIC HOSES ARE NOT SHOWN FOR CLARITY

SOLD ONLY AS A SET ORDER 030127	9	1	030152	YOU LI 3-SPOOL CONTROL VALVE
	8	6	030125	QUICK COUPLING, MALE END, 1/2" FEMALE PIPE
	7	6	030126	QUICK COUPLING, FEMALE END, 1/2" FEMALE PIPE
	6	4	010160	M8 X 1.25 X 20mm FHMS, ZP
	5	1	HH0120-1	HOSE ASSY,#8M3K,(2) 8GE-8MP, 120" LGTH
	4	1	HH0120-1	HOSE ASSY,#8M3K,(2) 8GE-8MP, 120" LGTH
	3	1	CV3200-01	CONTROL VALVE MOUNTING PLATE
ITEM QTY		PART NO.		DESCRIPTION

UNLESS OTHERWISE SPECIFIED DIMENSIONS ARE IN INCHES. TOLERANCES ARE: DECIMALS ANGLES .XX± .01 ±2° .XXX± .005 FRACTIONAL ± 1/16 DO NOT SCALE DRAWING		APPROVALS		DATE	<div>MOLE-MASTER SERVICES CORPORATION</div> <div>TITLE</div> <div>HYDRAULIC JUNIOR 360</div> <div>MODEL NO: JR360H</div> <div>CONTROL VALVE ASSEMBLY</div> <div>DWG NO.</div> <div>PL3360H-5</div> <div>REV.</div> <div>A</div>	
		DRAWN		EPP		
		CHECKED		-		
		ENGR		-		
TREATMENT	-				SIZE	D
FINISH	-				SCALE	3/4
MATERIAL	SEE BOM				CALC. WT	ACT. WT
					SHEET	1 OF 1

THIS MATERIAL IS THE PROPERTY OF MOLE MASTER SERVICES CORPORATION AND MAY NOT BE REPRODUCED, PUBLISHED, OR DISCLOSED TO OTHERS WITHOUT WRITTEN AUTHORIZATION AND MAY NOT BE USED IN ANY WAY AGAINST OR DETRIMENTAL TO MOLE MASTER SERVICES CORPORATION.

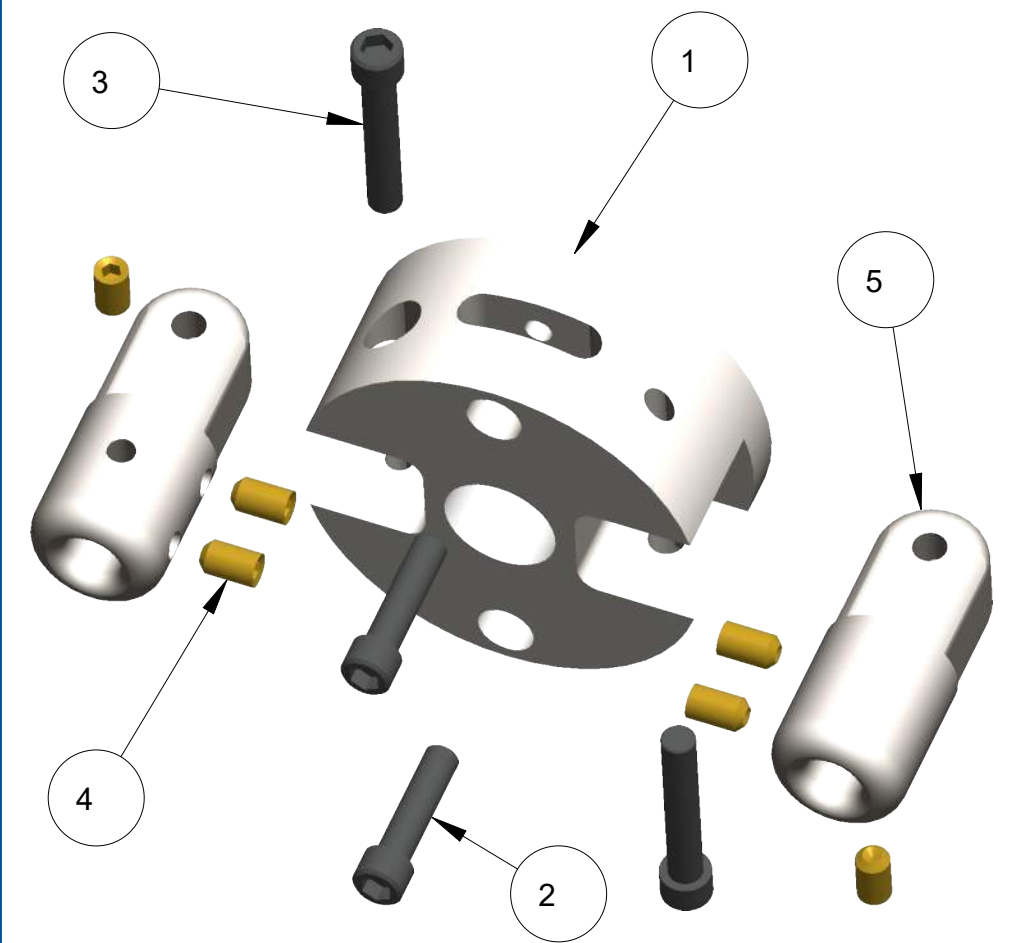
REVISION HISTORY			
REV	DESCRIPTION	DATE	BY
A	RVSD BOM. CREATED SF3010-00 WELDMENT	10-19-15	EPP
B	MADE HANDLE PART OF WINCH ASSY	01-08-20	EPP



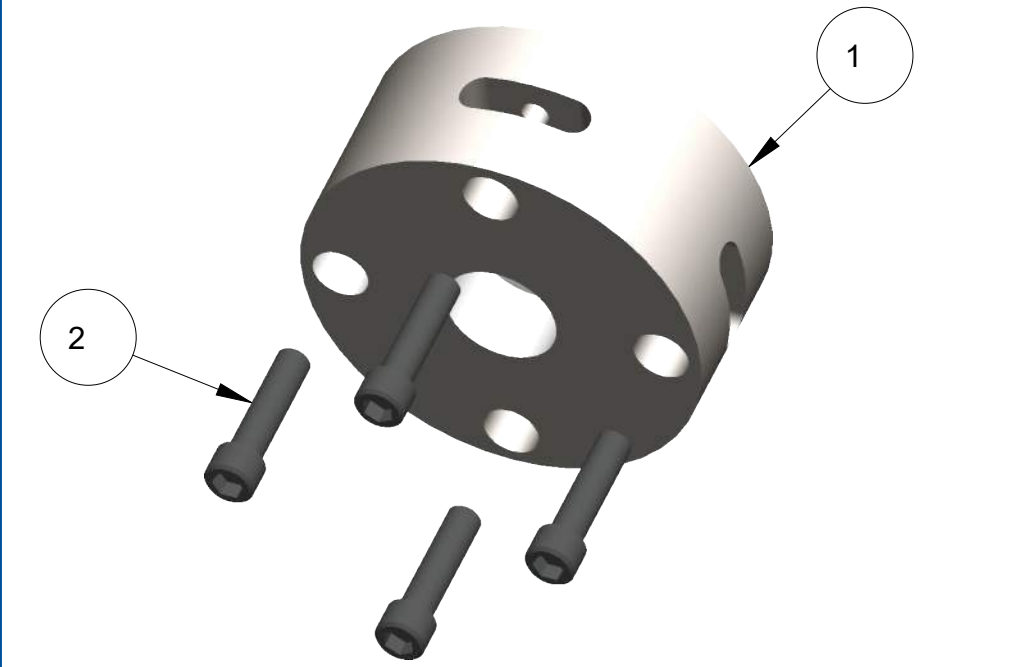
9	1	SF3010-00	UPPER SUPPORT FRAME WELDMENT
8	1	SF3002-00	MODIFIED WINCH ASSEMBLY
7	1	090107	1/2-13 x 1-1/2", HAND KNOB
6	4	010158	1/2" X 2-1/2", DETENT RING PIN
5	4	010113	3/16", BLIND POP-RIVET, BUTTON HEAD, ALUM
4	1	010112	5/8-11, HEX PULL PIN
3	2	010111	1/16" X 6", BARE CABLE, STEEL LANYARD
2	2	010111	1/16" X 6", BARE CABLE, STEEL LANYARD
1	1	010101	3/8-16 X 2" X 3", U-BOLT, ZP
ITEM	QTY	PART NO.	DESCRIPTION

UNLESS OTHERWISE SPECIFIED DIMENSIONS ARE IN INCHES. TOLERANCES ARE: DECIMALS ANGLES .XX± .01 ±2° .XXX± .005 FRACTIONAL ± 1/16 DO NOT SCALE DRAWING		APPROVALS		DATE	<div>MOLE-MASTER SERVICES CORPORATION</div> <div>TITLE</div> <div>HYDRAULIC JUNIOR 360</div> <div>MODEL NO: JR360H</div> <div>UPPER SUPPORT FRAME ASSY</div> <div>PL3360H-6</div> <div>REV. B</div>	
		DRAWN	EPP	12-14-12		
		CHECKED	-	-		
		ENGR	-	-		
TREATMENT	-				SIZE	DWG NO.
FINISH	-				D	PL3360H-6
MATERIAL	SEE BOM				SCALE	3/8
		CALC. WT	34.5 lbs.	ACT. WT	-	SHEET
				1 OF 1		

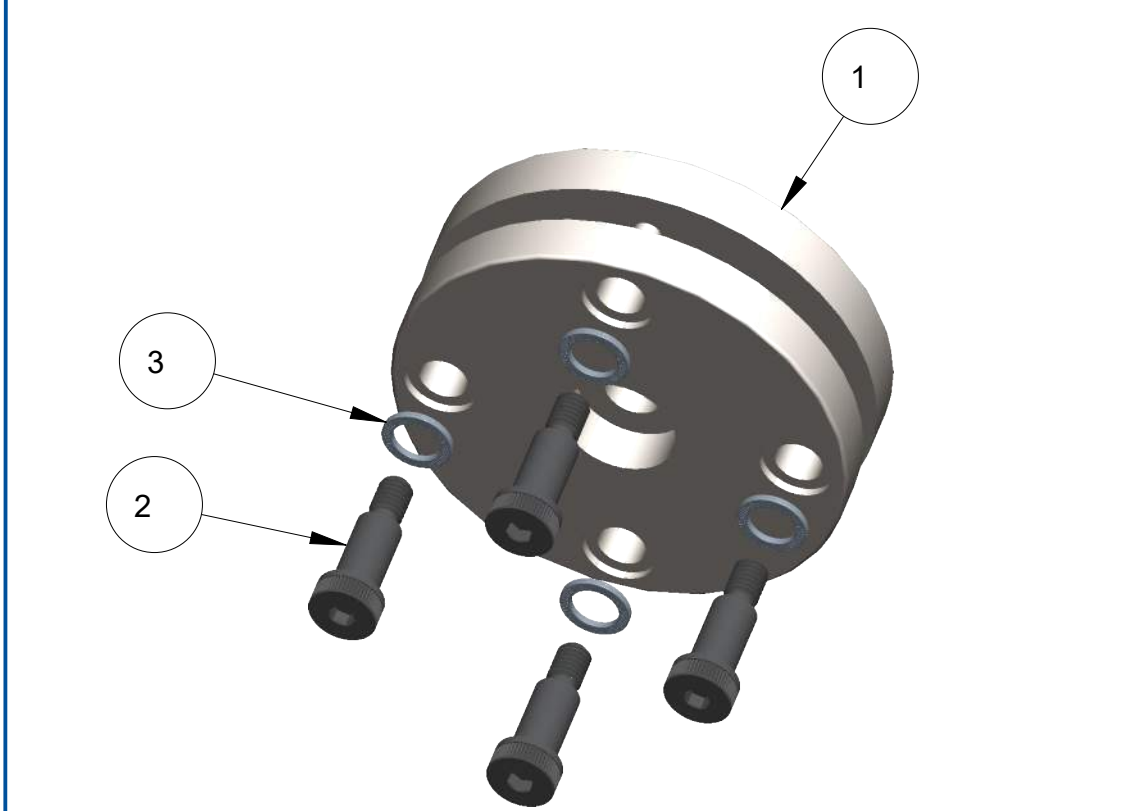
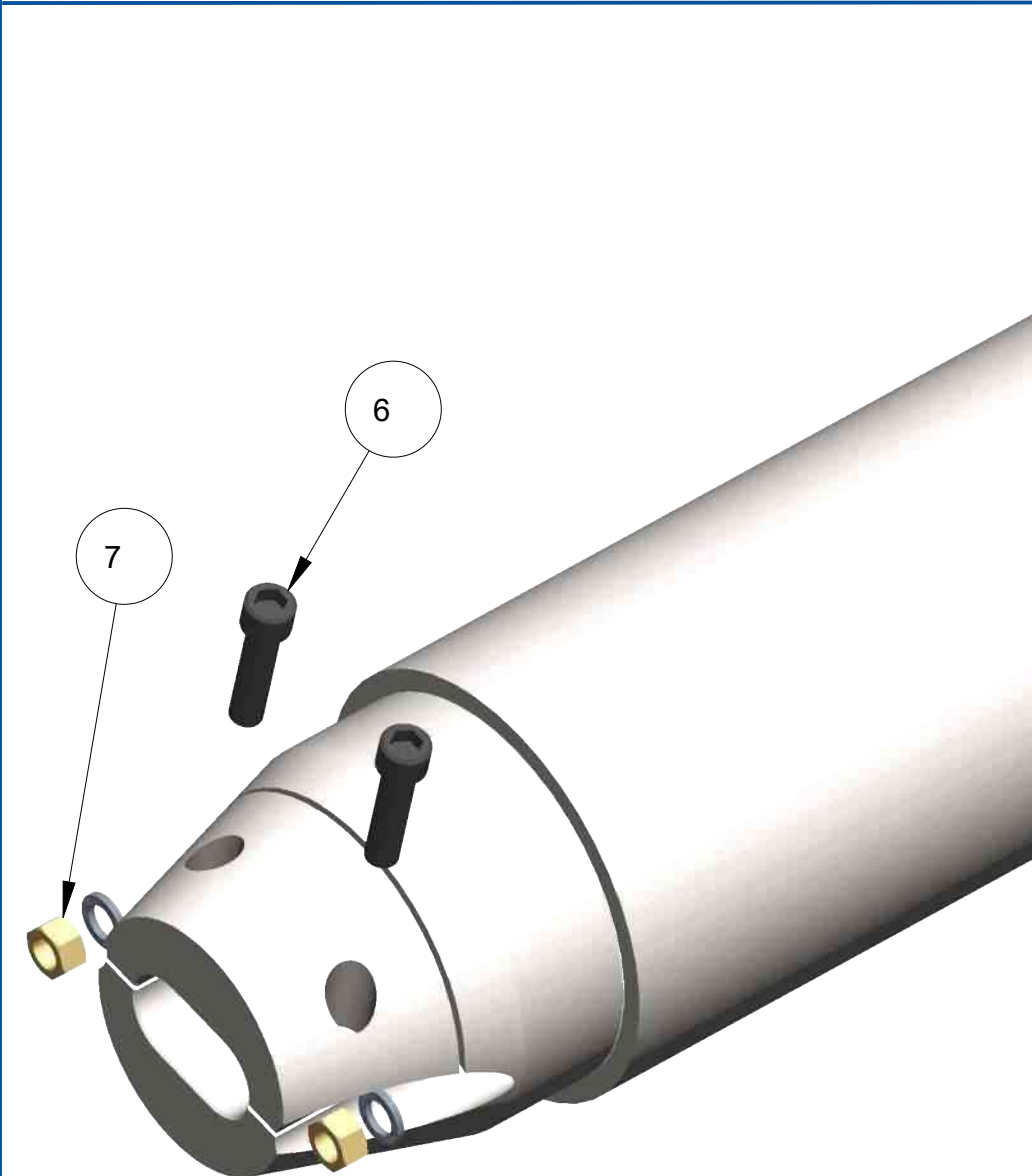
THIS MATERIAL IS THE PROPERTY OF MOLE MASTER SERVICES CORPORATION AND MAY NOT BE REPRODUCED, PUBLISHED, OR DISCLOSED TO OTHERS WITHOUT WRITTEN AUTHORIZATION AND MAY NOT BE USED IN ANY WAY AGAINST OR DETRIMENTAL TO MOLE MASTER SERVICES CORPORATION.



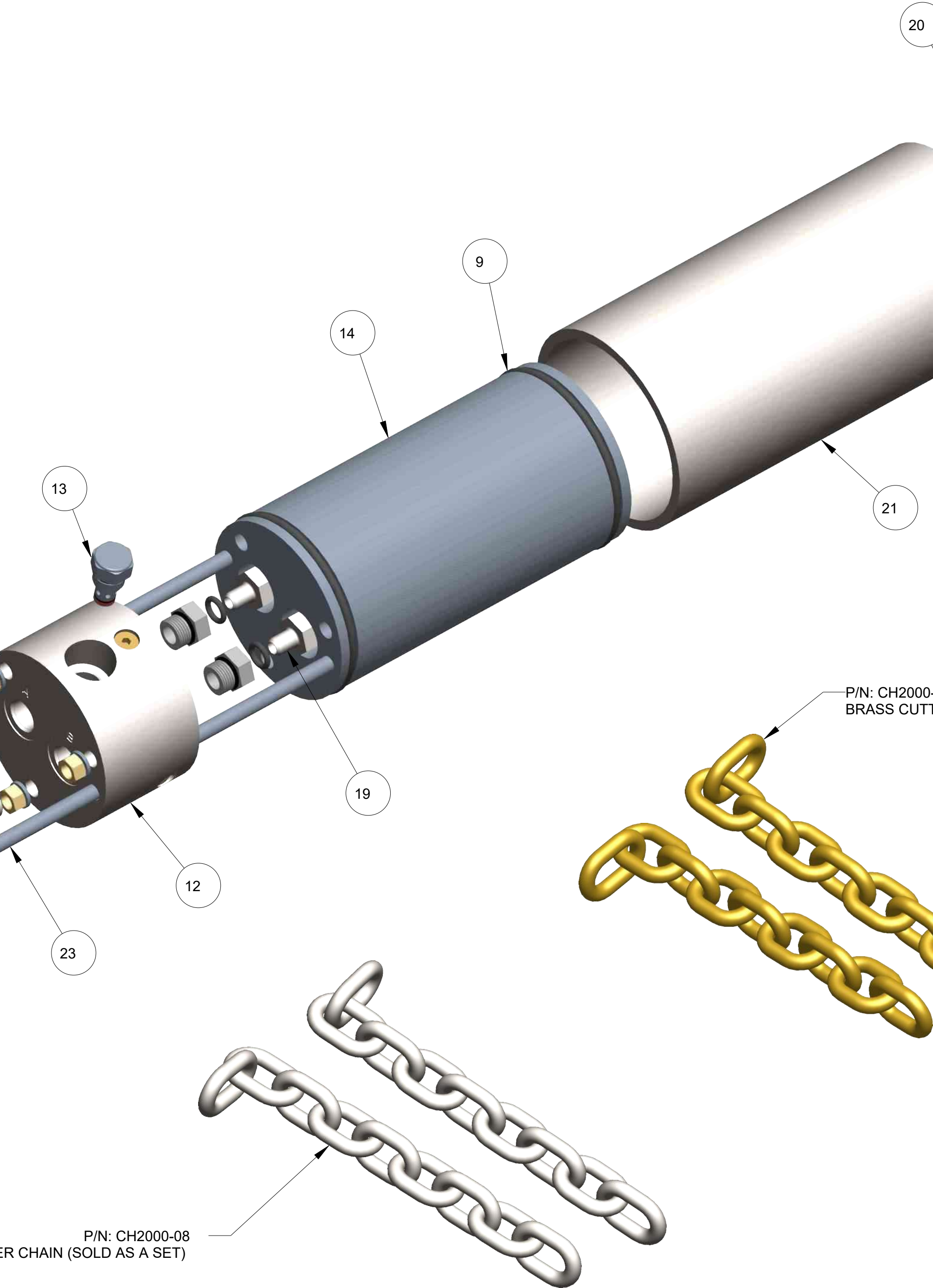
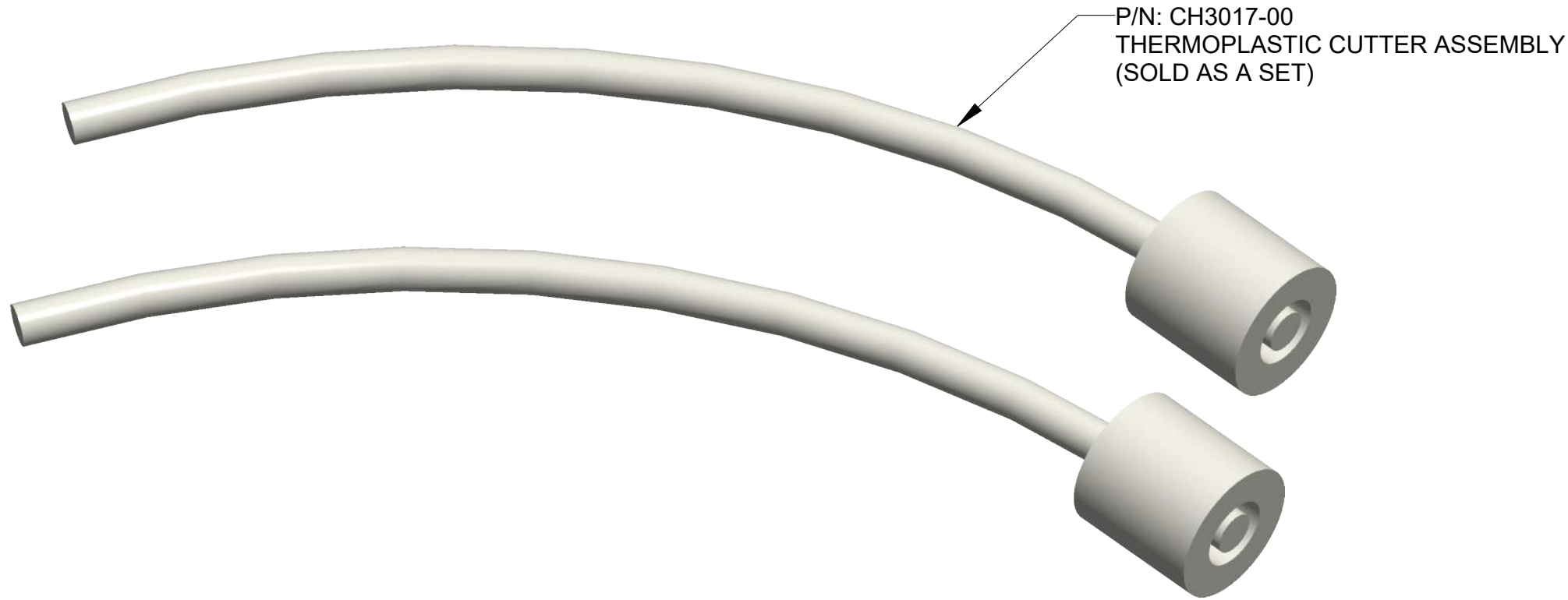
CH3022-00 (2 Chain & 2 Whip Cutter Head Assembly)			
5	2	CH3007-02	WHIP CUTTER ATTACHMENT HOUSING
4	6	010100	3/8-16 X 5/8", SCKT. SET SCR, BRS
3	2	010122	3/8-16 X 2-1/4", SHCS, BLK. OXIDE
2	2	010121	3/8-16 X 1-1/2", SHCS, BLK. OXIDE
1	1	CH3022-01	2 CHAIN & 2 WHIP CUTTER HEAD
ITEM	QTY	PART NO.	DESCRIPTION
BILL OF MATERIALS			



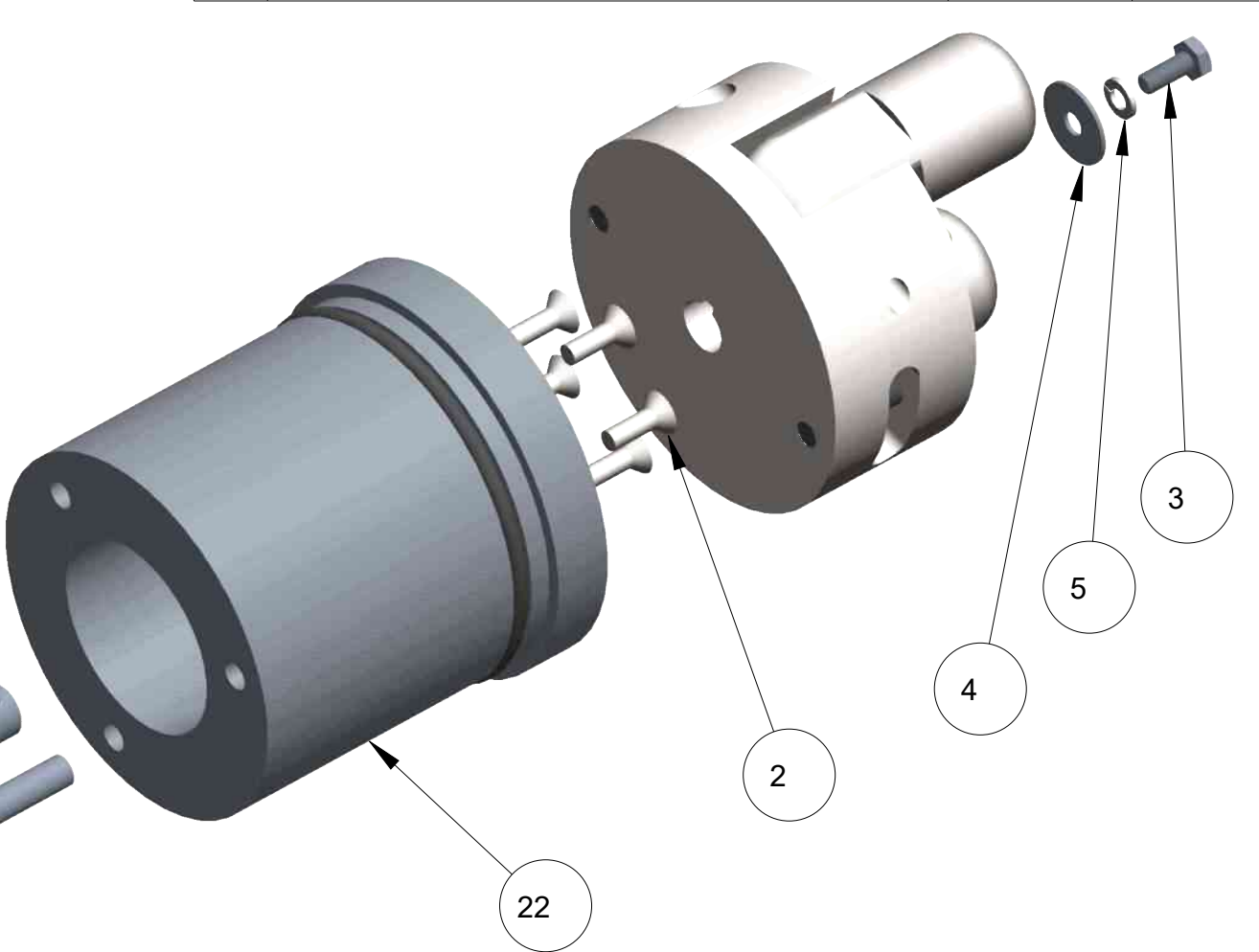
CH3024-00 (4 Chain Cutter Head Assembly)			
2	4	010121	3/8-16 X 1-1/2", SHCS, BLK. OXIDE
1	1	CH3024-01	4 CHAIN CUTTER HEAD
ITEM	QTY	PART NO.	DESCRIPTION
BILL OF MATERIALS			



CH3023-00 (4 Chain Steel Cutter Head Assembly)			
3	4	010106	1/2", NORD-LOCK WASHER, ZINC-FLAKE
2	4	010129	1/2 X 1", SCKT SHLDR. SCR, 3/8-16 THD
1	1	CH3023-01	4 CHAIN STEEL CUTTER HEAD
ITEM	QTY	PART NO.	DESCRIPTION
BILL OF MATERIALS			



REVISION HISTORY			
REV	DESCRIPTION	DATE	BY
A	ADDED (2) 020207	02-25-14	EPP
B	ADDED (1) CH3007-00, REMOVED (1) 020204	02-19-15	EPP
C	ADDED MANIFOLD, CARTRIDGE, AND FITTINGS	03-04-16	EPP
D	RVSD MOTOR AND CUTTER HEAD PART NO.	04-13-20	EPP



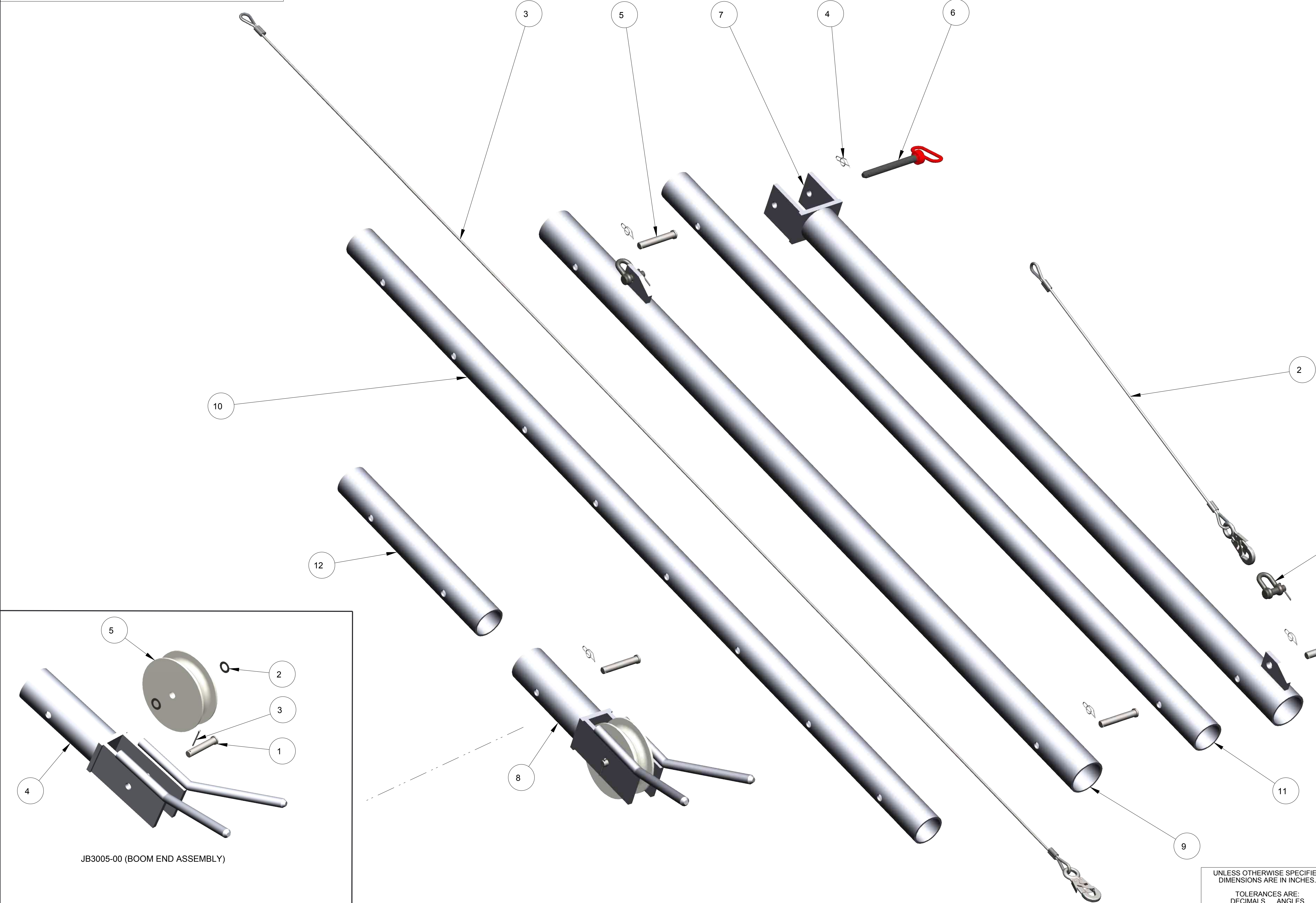
SOLD ONLY AS A SET
ORDER 030127

25	1	030125	QUICK COUPLING, MALE END, 1/2" FEMALE PIPE
24	1	030126	QUICK COUPLING, FEMALE END, 1/2" FEMALE PIPE
23	2	CH3005-01	OUTER HOUSING ATTACHING ROD
22	1	CH3009-01	MOTOR MOUNT
21	1	CH3001-01	MOTOR HOUSING
20	4	CH3012-01	MODIFIED, 8MB-PLUG
19	2	CH3021-01	MODIFIED, 8MB-6MJ
18	2	CH3011-01	MODIFIED, 6MB-6MJ
17	1	030155	J-SERIES HYDRAULIC MOTOR
16	1	CH3002-00	COUNTER WEIGHT HOUSING WELDMENT
15	3	CH3006-01	COUNTER WEIGHT CONNECTING ROD
14	1	CH3010-01	COUNTER WEIGHT
13	1	030146	CHECK VALVE CARTRIDGE, 5 PSI
12	1	030145	ANTI-CAVATATION MANIFOLD
11	2	020109	8MB-8MP, MALE O RING BOSS-MALE PIPE THREAD HYD ADAPTER
10	4	020207	7/16" ID X 1 1/16" OD X 1/8" WIDE VITON O-RING
9	3	020204	4" ID X 4-3/8" OD X 3/16" BUNA O-RING
8	5	010105	3/8", NORD-LOCK WASHER, ZINC-FLAKE
7	5	010104	3/8-24, HEX NUT, GR. 5, YZ
6	2	010121	3/8-16 X 1-1/2", SHCS, BLK. OXIDE
5	1	010162	1/4", SPLIT LOCK WASHER, ZP
4	1	010161	1/4" X1"OD FENDER WASHER ZP
3	1	010163	1/4-28 X 5/8", HHCS, GR. 5, ZP
2	5	010123	1/4-28 X 3/4", FHSCS, BLK. OXIDE
1	1	CH3022-00	2 CHAIN & 2 WHIP CUTTER HEAD ASSY
ITEM	QTY	PART NO.	DESCRIPTION

UNLESS OTHERWISE SPECIFIED DIMENSIONS ARE IN INCHES.		TOLERANCES ARE: DECIMALS ANGLES .XX± .01 ±2° .XXX± .005 FRACTIONAL ± 1/16		DO NOT SCALE DRAWING		TREATMENT		FINISH		MATERIAL		SEE BOM	
APPROVALS		DATE		DRAWN		EPP		CHECKED		-		ENGR	
TITLE		HYDRAULIC JUNIOR 360		MODEL NO: JR360H		CUTTING HEAD ASSEMBLY		SIZE		DWG NO.		REV.	
D		1/2		PL3360H-7		D		SCALE		1/2		SHEET	
1 OF 1		1 OF 1		1 OF 1		1 OF 1		1 OF 1		1 OF 1		1 OF 1	

THIS MATERIAL IS THE PROPERTY OF MOLE MASTER SERVICES CORPORATION AND MAY NOT BE REPRODUCED, PUBLISHED, OR DISCLOSED TO OTHERS WITHOUT WRITTEN AUTHORIZATION AND MAY NOT BE USED IN ANY WAY AGAINST OR DETRIMENTAL TO MOLE MASTER SERVICES CORPORATION.

REVISION HISTORY			
REV	DESCRIPTION	DATE	BY
A	RVSD JB3005-00 BOM	02-15-16	EPP
B	MOVED 010148 TO M3000-00	07-22-19	EPP



ITEM	QTY	PART NO.	DESCRIPTION
13	1	JB3008-00	EYE BOLT CLEVIS PIN
12	1	JB3006-01	BOOM EXTENSION
11	1	JB3004-01	BOOM EXTENSION
10	1	JB3003-01	BOOM EXTENSION
9	1	JB3002-00	BOOM EXTENSION
8	1	JB3005-00	BOOM END ASSEMBLY
7	1	JB3001-00	BOOM
6	1	030105	3/4" x 6-1/2" VINYL COATED HITCH PIN
5	3	010103	3/4" X 4-1/2", CLEVIS PIN, ZP
4	5	010159	3/4" SHAFT, RUE RING LOCKING COTTER PIN
3	1	JB3009-00	1/4" GALV AIRCRAFT CABLE ASSEMBLY 138-3/4" LG
2	1	JB3007-00	1/4" GALV AIRCRAFT CABLE ASSEMBLY 50-1/4" LG
1	1	030124	1/2" ROUND PIN CHAIN SHACKLE

ITEM	QTY	PART NO.	DESCRIPTION
5	1	M3000-05	PULLEY, DOUBLE SPOOL
4	1	JB3015-00	BOOM END WELDMENT
3	1	010153	5/32" x 2", COTTER PIN, ZP
2	2	010135	3/4", MACHINERY BUSHING, 18 GA., PLN FIN
1	1	010102	3/4" X 4", CLEVIS PIN, ZP

BILL OF MATERIALS

UNLESS OTHERWISE SPECIFIED
DIMENSIONS ARE IN INCHES.

TOLERANCES ARE:
DECIMALS ANGLES
.XX± .01 ±2°
.XXX± .005
FRACTIONAL ± 1/16

DO NOT SCALE DRAWING

TREATMENT -

FINISH -

MATERIAL SEE BOM

APPROVALS	DATE
DRAWN EPP	03-12-13
CHECKED -	-
ENGR	

MOLE-MASTER SERVICES CORPORATION

27815 STATE ROUTE 7
MARIETTA, OHIO 45750 USA
740-374-6726

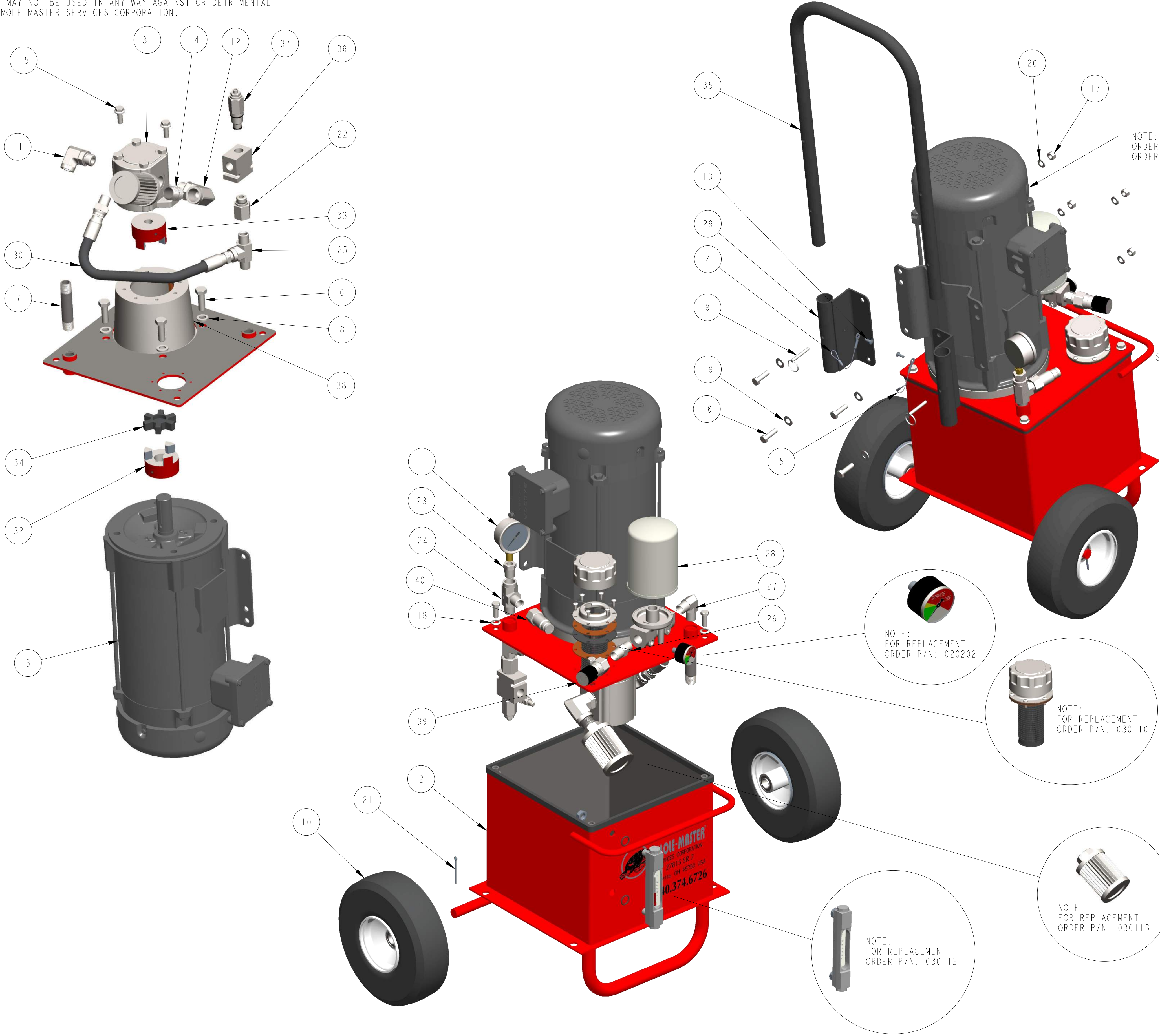
TITLE
HYDRAULIC JUNIOR 360
MODEL NO: JR360H
BOOM ASSEMBLY

SIZE	DWG NO.	REV.
D	PL3360H-8	B

SCALE	CALC. WT	ACT. WT	SHEET	1 OF 1
3/16				

THIS MATERIAL IS THE PROPERTY OF MOLE MASTER SERVICES CORPORATION AND MAY NOT BE REPRODUCED, PUBLISHED, OR DISCLOSED TO OTHERS WITHOUT WRITTEN AUTHORIZATION AND MAY NOT BE USED IN ANY WAY AGAINST OR DETRIMENTAL TO MOLE MASTER SERVICES CORPORATION.

REVISION HISTORY			
REV	DESCRIPTION	DATE	BY
A	040102 WAS 010117	05-15-14	EPP
B	050102 WAS 020101, 050105 WAS 020103	05-30-14	EPP
C	REPLACED 030103 & 030104 WITH 030148	03-29-17	EPP
D	SEE REVISION NOTE	01-15-24	EPP
E	UPDATED 5 HP MOTOR, REMOVED 020104	08-12-24	EPP



NOTE:
ORDER P/N: 030162 FOR 230/380/460 VOLT EXPLOSION PROOF ELECTRIC AC MOTOR
ORDER P/N: 030139 FOR 200 & 575 VOLT ELECTRIC AC MOTOR

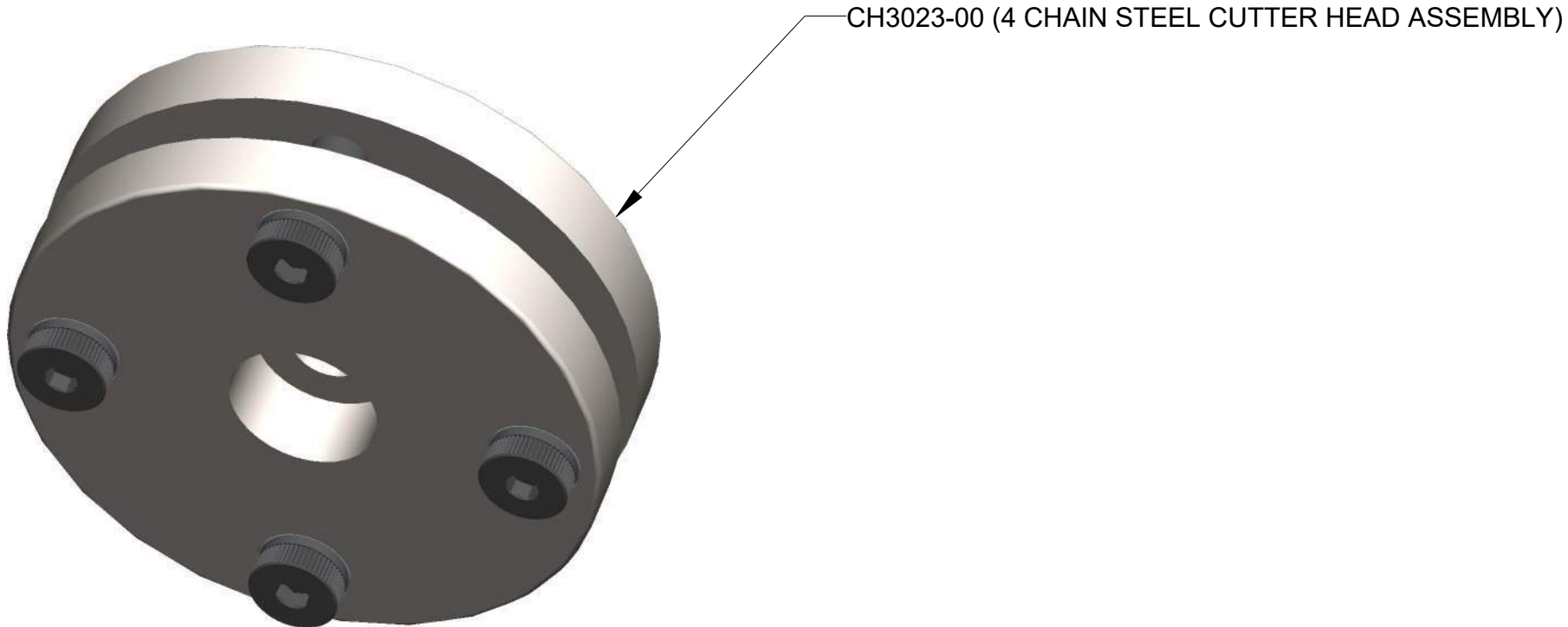
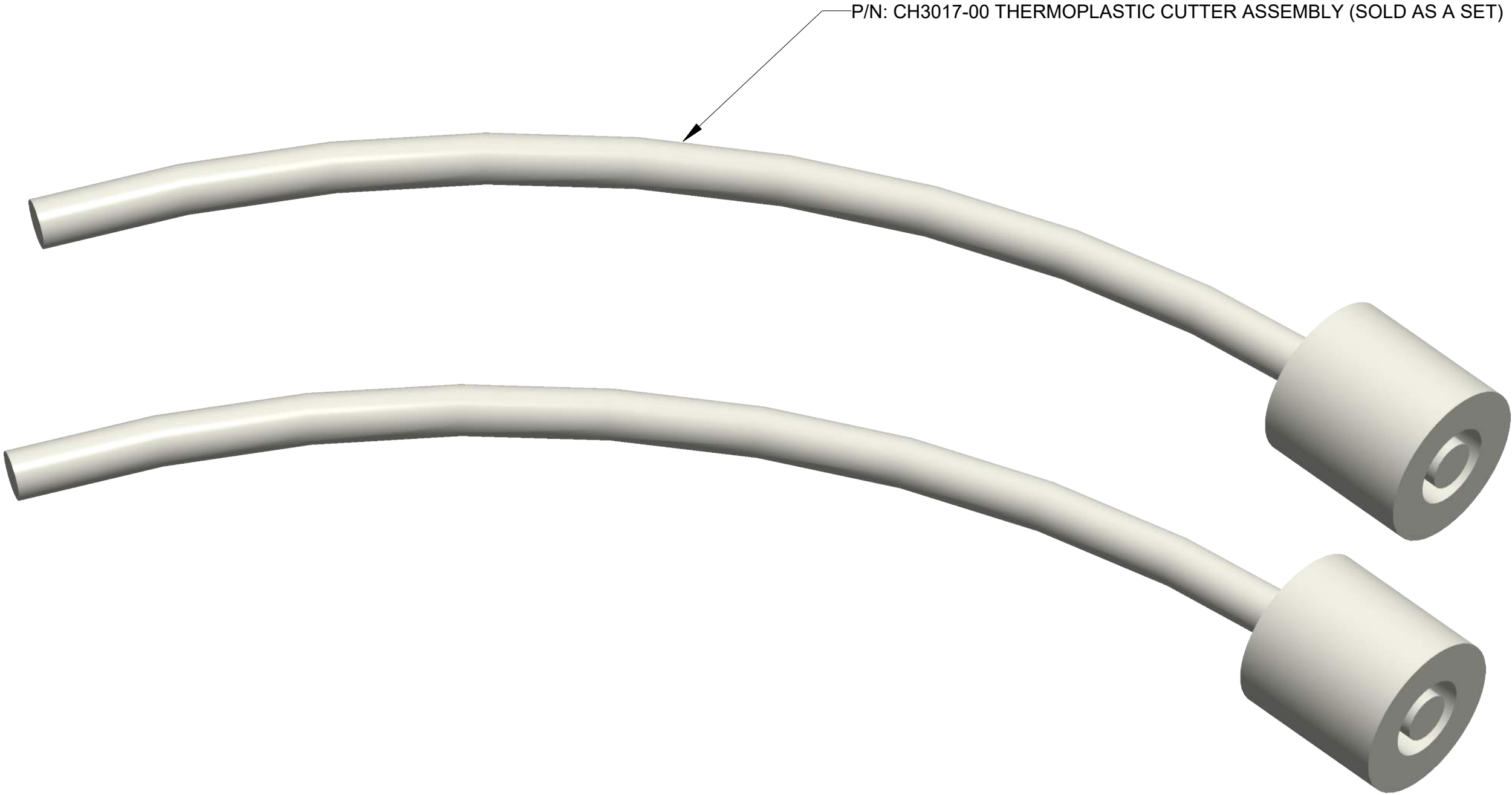
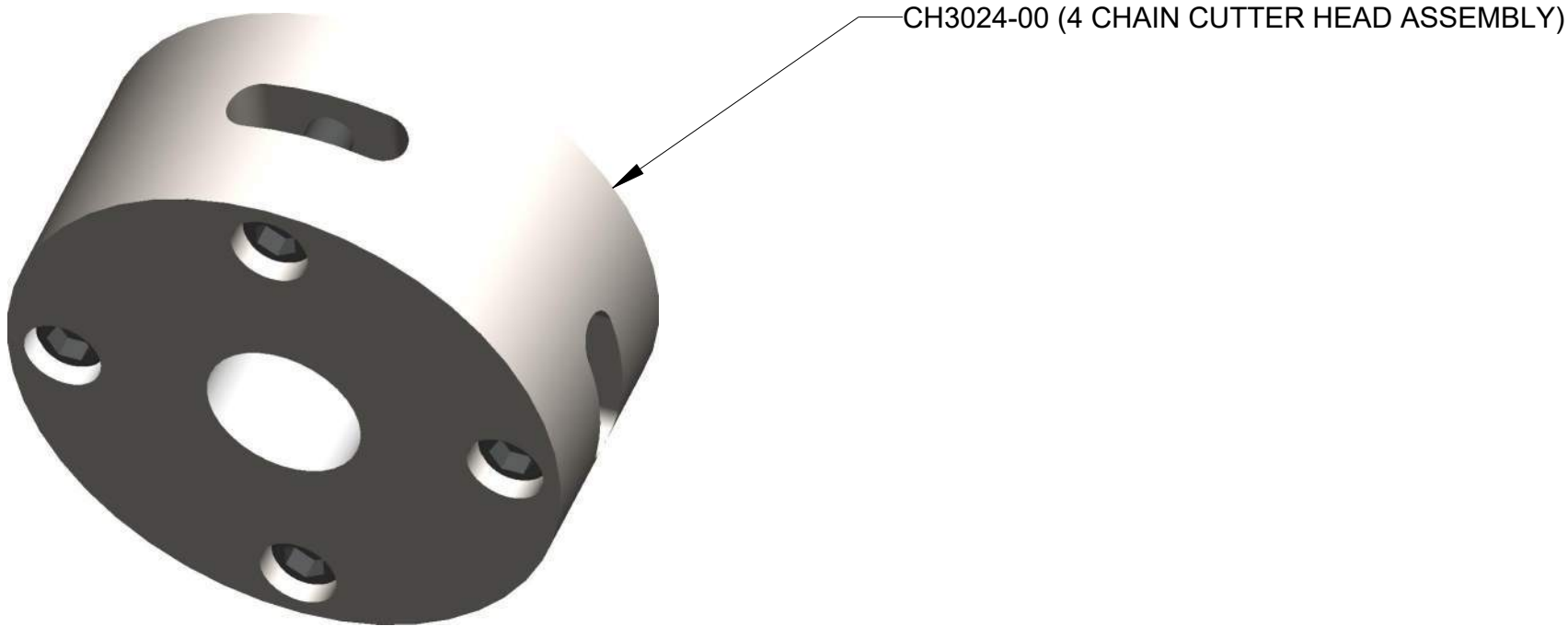
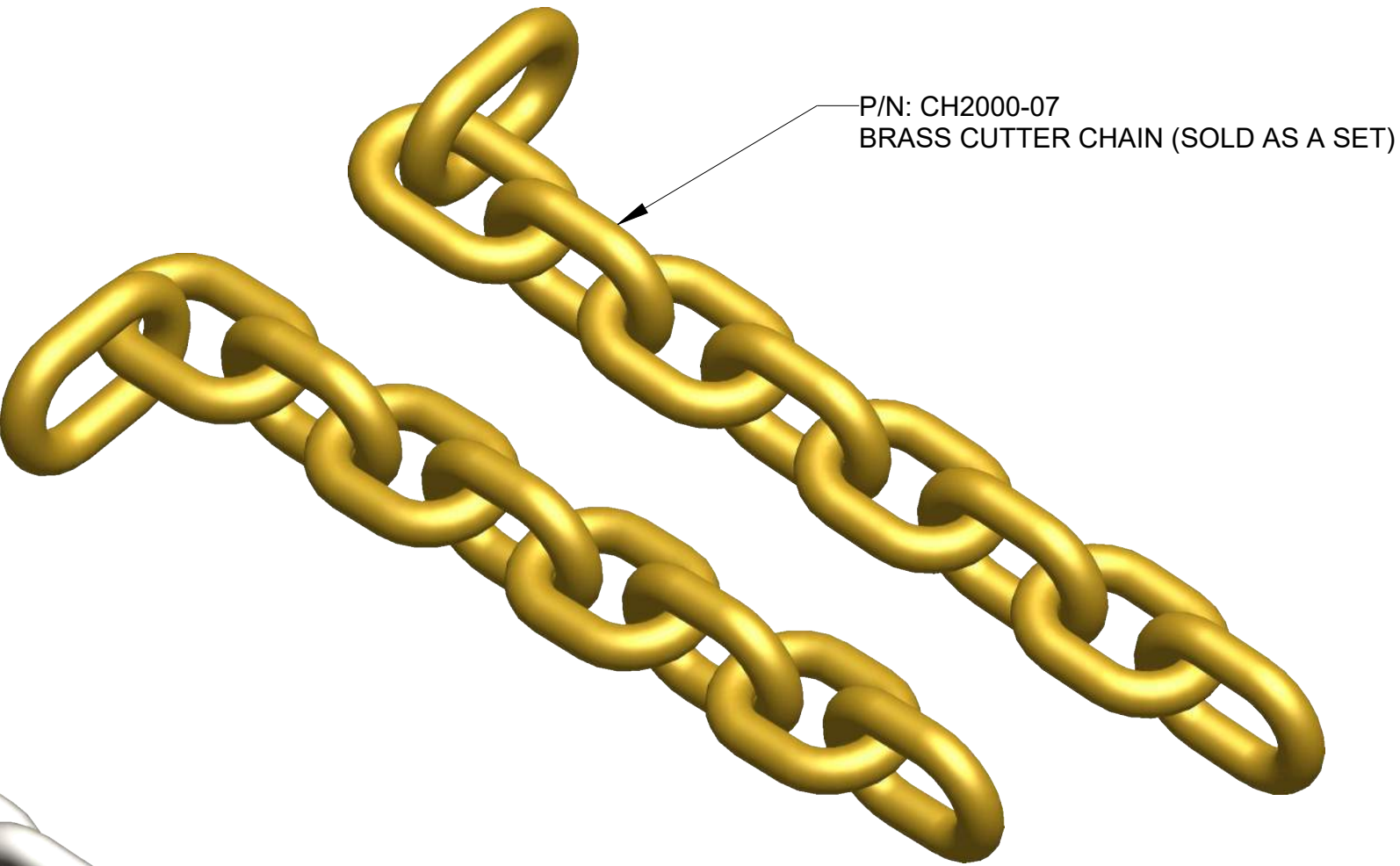
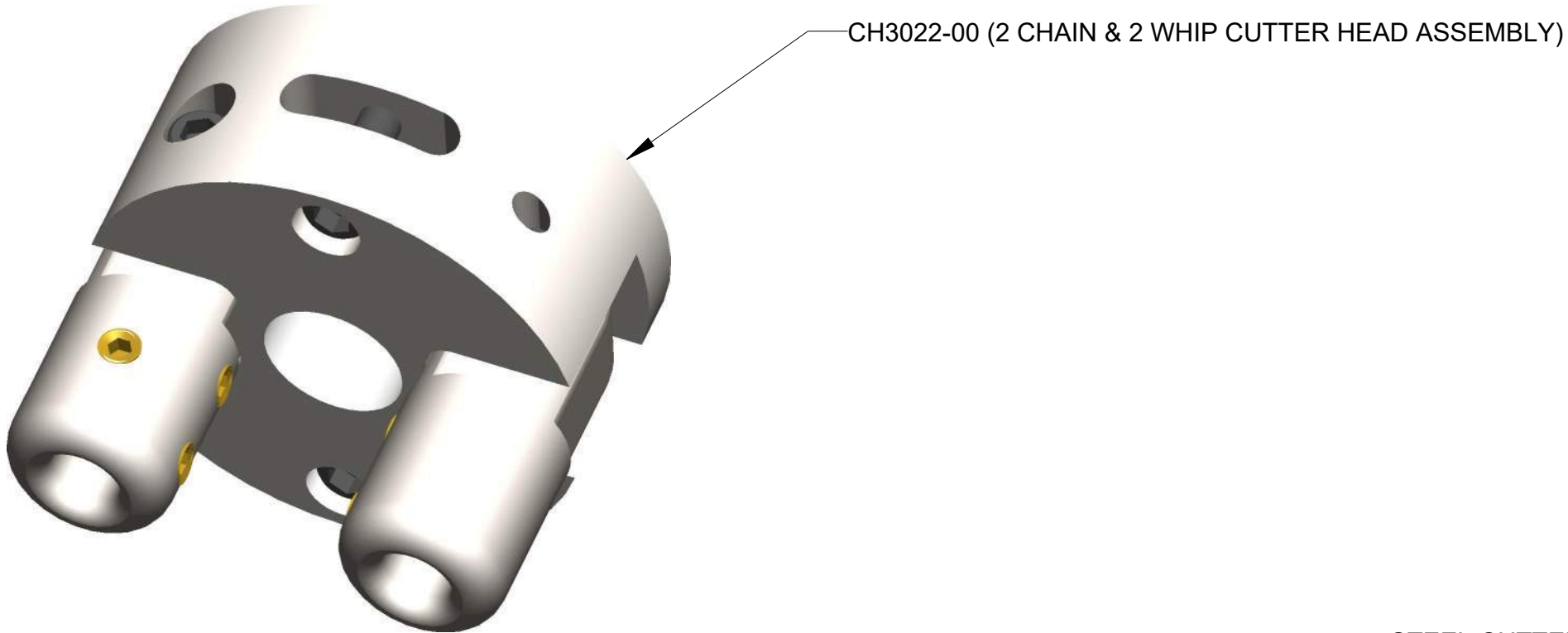
REVISION NOTE D:
030158 WAS 030130, 050110 WAS 020118
& 030162 WAS 030115


ITEM QTY	PART NO.	DESCRIPTION
40	I	030125 QUICK COUPLING, MALE END, 1/2" FEMALE PIPE
39	I	030126 QUICK COUPLING, FEMALE END, 1/2" FEMALE PIPE
38	I	030111 PUMP MOUNT FOR ELECTRIC MOTOR
37	I	030128 PRESSURE RELIEF CARTRIDGE
36	I	030129 PRESSURE RELIEF BODY
35	I	PU3001-01 POWER UNIT HANDLE
34	I	030119 LOVEJOY-SPIDER COUPLING-L099/L100SOX
33	I	030120 LOVEJOY COUPLER-L099X5/8HUB3/16
32	I	030121 LOVEJOY COUPLER-L099X1 1/8HUB1/4
31	I	030158 HYDRAULIC GEAR PUMP
30	I	HH3004-00 HOSE ASSY, #8M3K, (1)8GE-8MPX, (1)8GE-8MP, 18" LGTH
29	2	PU3002-00 HANDLE MOUNTING BRACKET
28	I	030122 FILTER ASSEMBLY, HYDRAULIC OIL
27	I	050105 8MP-8MP90, MALE PIPE-MALE PIPE 90 D ELBOW HYD ADAPTER
26	I	050102 8MP-8MP, MALE PIPE-MALE PIPE HEX NIPPLE
25	I	020105 8MP-8MP-8FP, MALE PIPE-MALE PIPE-FEMALE PIPE TEE HYD ADAPTER
24	I	020106 8MP-8FP-8MP, MALE PIPE-FEMALE PIPE-MALE PIPE TEE HYD ADAPTER
23	I	020102 8MP-4FP, MALE PIPE-FEMALE PIPE HEX REDUCER BUSHING HYD ADAPTER
22	I	020110 8MB-8FP, MALE O RING BOSS-FEMALE PIPE THREAD STR HYD ADAPT
21	2	010153 5/32" x 2", COTTER PIN, ZP
20	4	010137 3/8", SPLIT LOCK WASHER, ZP
19	4	010131 3/8", FLAT WASHER, SAE, ZP
18	4	010133 3/8", BONDED SEALING WASHER, 18-8 SS
17	4	010139 3/8-16, HEX NUT, GR. A, ZP
16	4	010118 3/8-16 X 1-1/4", HHCS, GR. 5, ZP
15	2	040102 3/8-16 X 1", FLG BOLT, SERRATTED WASHER, GR 8.2, ZP
14	I	010154 3/4" CLOSE PIPE NIPPLE, SCHD 40, STL
13	2	010113 3/16", BLIND POP-RIVET, BUTTON HEAD, ALUM
12	I	050110 12MB-12FP90, MALE O-RING BOSS-FEMALE PIPE 90° ELBOW HYD ADAPTER
11	I	020116 10MB-8FP90, MALE O RING BOSS-FEMALE PIPE 90° ELBOW HYD ADAPTER
10	2	030148 10" FLAT FREE WHEEL ASSY, 3" OFFSET
9	2	010157 1/4" X 1-1/2", DETENT RING PIN
8	4	010138 1/2", SPLIT LOCK WASHER, ZP
7	I	010149 1/2" X 4", SEAMLESS PIPE NIPPLE, SCHD 80, 3000#
6	4	010120 1/2-13 X 1-1/2", HHCS, GR. 5, ZP
5	I	010111.3 1/16" X 6", BARE CABLE, STEEL LANYARD
4	I	010111.2 1/16" X 6", BARE CABLE, STEEL LANYARD
3	I	030138 5 HP, 1750 RPM, 3PH, TEFC, 230/460V AC ELECTRIC MOTOR
2	I	030114 5 GALLON VERTICAL HYDRAULIC RESERVOIR
1	I	020203 2-1/2"-3000 PSI GLY GAUGE, 1/4" NPT BOTTOM MOUNT

BILL OF MATERIALS			
UNLESS OTHERWISE SPECIFIED DIMENSIONS ARE IN INCHES.		APPROVALS	
TOLERANCES ARE: DECIMALS .XX ±.01 .XXX ±.005 FRACTIONAL ±1/16		DATE	
DO NOT SCALE DRAWING		EPP 12-14-12	
TREATMENT		ENGR	
FINISH			
MATERIAL		SEE BOM	
		SCALE 1/4	
		CNC WT ACT WT SHEET 1 OF 1	
		REV. E	
		DWC NO. PL3360H-9	
		TITLE HYDRAULIC JUNIOR 360° MODEL NO: JR360H POWER UNIT ASSEMBLY	
		27815 STATE ROUTE 7 MARIETTA, OHIO 45750 USA 740-374-6726	
		MOLE-MASTER SERVICES CORPORATION	

THIS MATERIAL IS THE PROPERTY OF MOLE MASTER SERVICES CORPORATION AND MAY NOT BE REPRODUCED, PUBLISHED, OR DISCLOSED TO OTHERS WITHOUT WRITTEN AUTHORIZATION AND MAY NOT BE USED IN ANY WAY AGAINST OR DETRIMENTAL TO MOLE MASTER SERVICES CORPORATION.

REVISION HISTORY			
REV	DESCRIPTION	DATE	BY



UNLESS OTHERWISE SPECIFIED DIMENSIONS ARE IN INCHES.				<div><div>MOLE-MASTERTM</div><div>SERVICES CORPORATION</div></div> <div></div> <div>27815 STATE ROUTE 7 MARIETTA, OHIO 45750 USA 740-374-6726</div>			
TOLERANCES ARE: DECIMALS ANGLES .XX± .01 ±2° .XXX± .005 FRACTIONAL ± 1/16 DO NOT SCALE DRAWING				APPROVALS		DATE	
				DRAWN		EPP 3-14-13	
				CHECKED		- -	
TREATMENT				ENGR			
FINISH				-			
MATERIAL				SEE BOM			
				SIZE		DWG NO.	
				D		PL3360H-10	
				SCALE		REV.	
				1/2		-	
				SCALE WT		ACT WT	
				SHEET		1 OF 1	