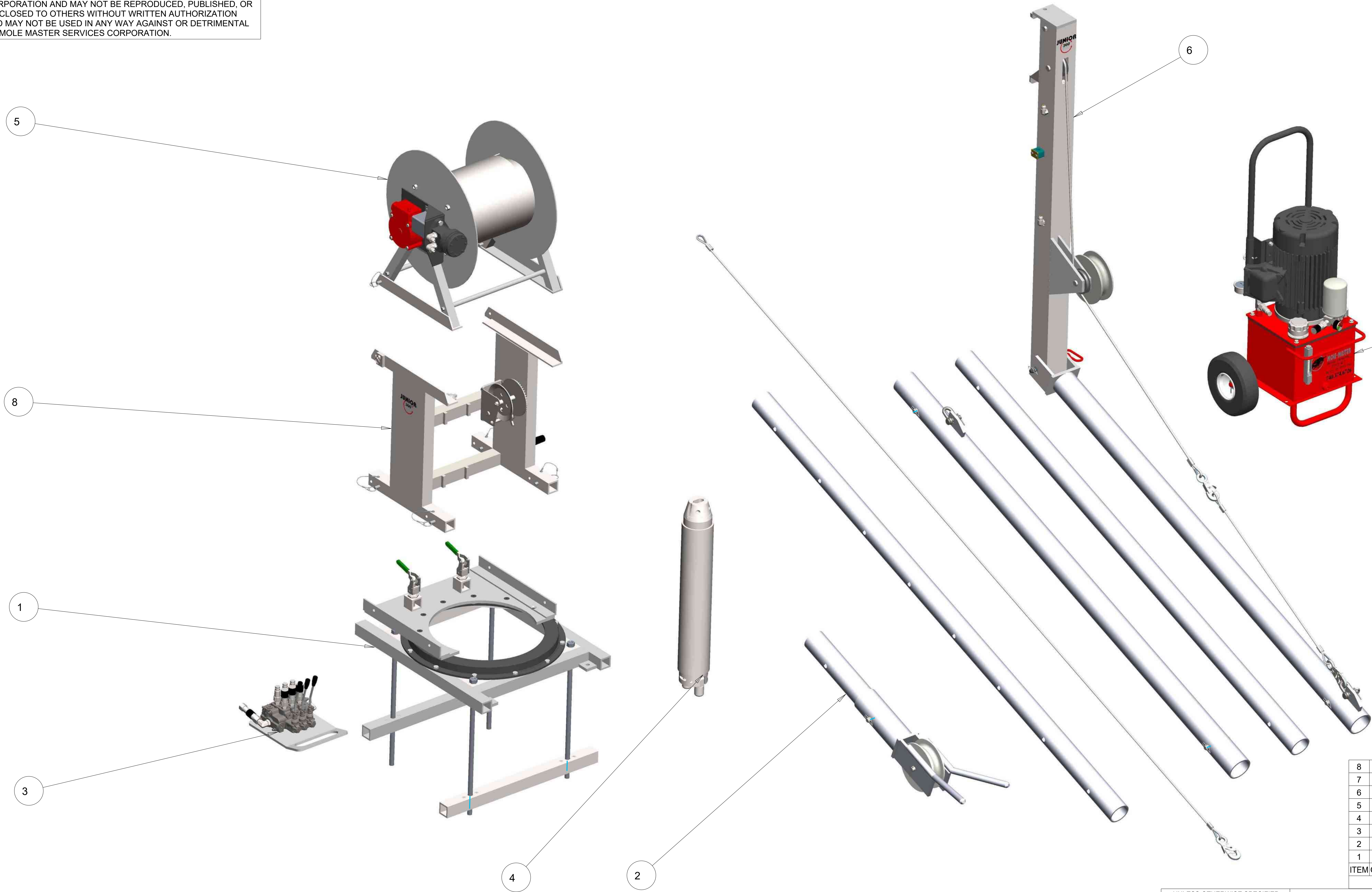


THIS MATERIAL IS THE PROPERTY OF MOLE MASTER SERVICES CORPORATION AND MAY NOT BE REPRODUCED, PUBLISHED, OR DISCLOSED TO OTHERS WITHOUT WRITTEN AUTHORIZATION AND MAY NOT BE USED IN ANY WAY AGAINST OR DETRIMENTAL TO MOLE MASTER SERVICES CORPORATION.

REVISION HISTORY			
REV	DESCRIPTION	DATE	BY
A	RVSD CONTROL VALVE PART NUMBER	01-08-20	EPP



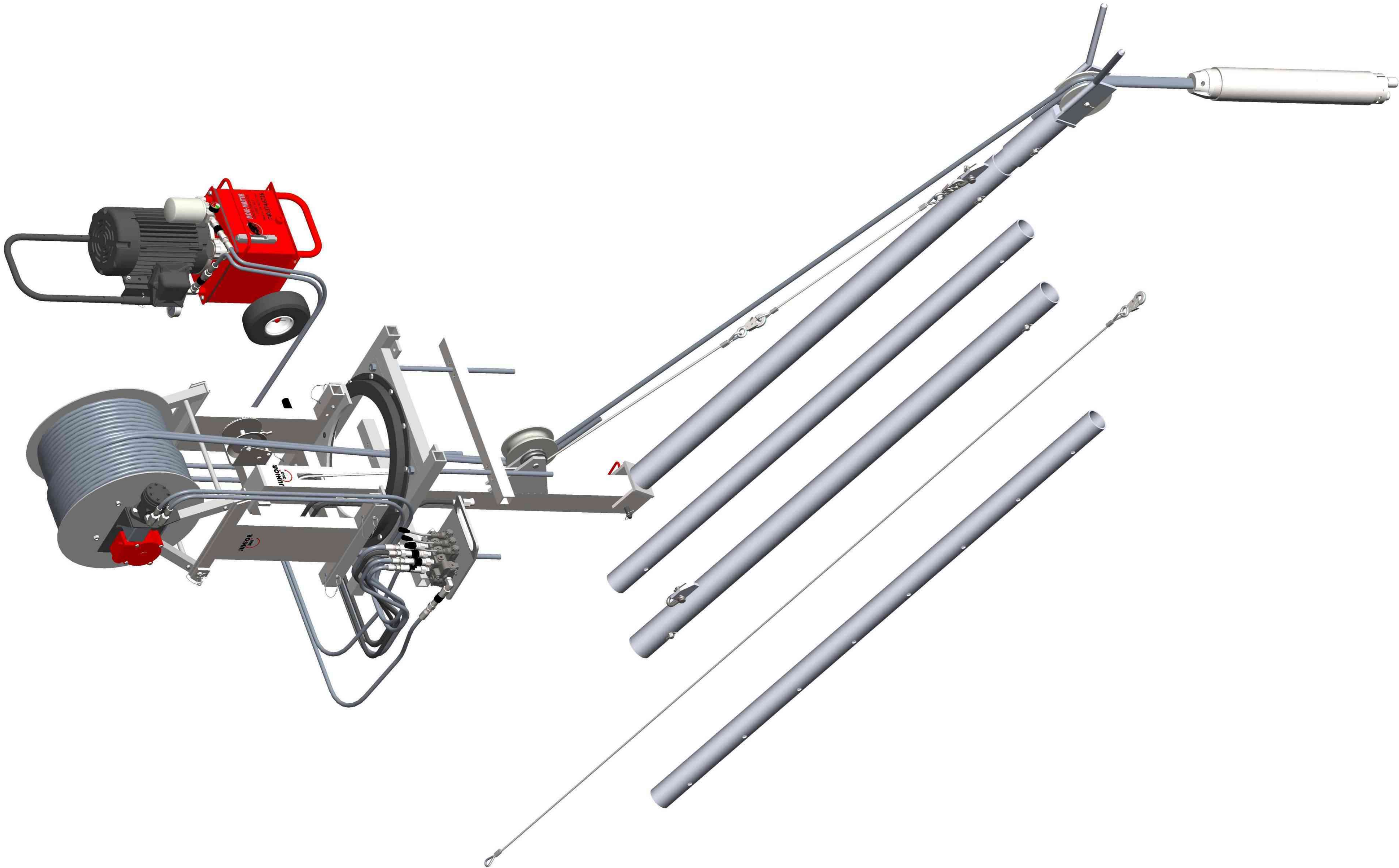
8	1	SF3001-00	UPPER SUPPORT FRAME
7	1	PU3000-00	POWER UNIT ASSEMBLY
6	1	M3000-00	MAST ASSEMBLY
5	1	HR3000-00	HOSE REEL ASSEMBLY
4	1	CH3000-00	CUTTING HEAD ASSEMBLY
3	1	CV3200-00	CONTROL VALVE ASSEMBLY
2	1	JB3000-00	BOOM ASSEMBLY
1	1	BF3000-00	BEARING FRAME ASSEMBLY
ITEM	QTY	PART NO.	DESCRIPTION


BILL OF MATERIALS

UNLESS OTHERWISE SPECIFIED DIMENSIONS ARE IN INCHES.		APPROVALS		DATE	MOLE-MASTER SERVICES CORPORATION		27815 STATE ROUTE 7 MARIETTA, OHIO 45750 USA 740-374-6726	
TOLERANCES ARE: DECIMALS ANGLES .XX± .01 ±2° .XXX± .005 FRACTIONAL ± 1/16		DRAWN	EPP	12-14-12	TITLE		HYDRAULIC JUNIOR 360	
DO NOT SCALE DRAWING		CHECKED	-	-	MODEL NO: JR360H		MASTER PARTS LIST	
TREATMENT		ENGR	-	-	SIZE		DWG NO.	
FINISH		-	-	-	D		PL3360H-1	
MATERIAL		SEE BOM	-	-	SCALE		1/8	
					CALC WT		ACT WT	
					SHEET		1 OF 2	

THIS MATERIAL IS THE PROPERTY OF MOLE MASTER SERVICES CORPORATION AND MAY NOT BE REPRODUCED, PUBLISHED, OR DISCLOSED TO OTHERS WITHOUT WRITTEN AUTHORIZATION AND MAY NOT BE USED IN ANY WAY AGAINST OR DETRIMENTAL TO MOLE MASTER SERVICES CORPORATION.

REVISION HISTORY			
REV	DESCRIPTION	DATE	BY

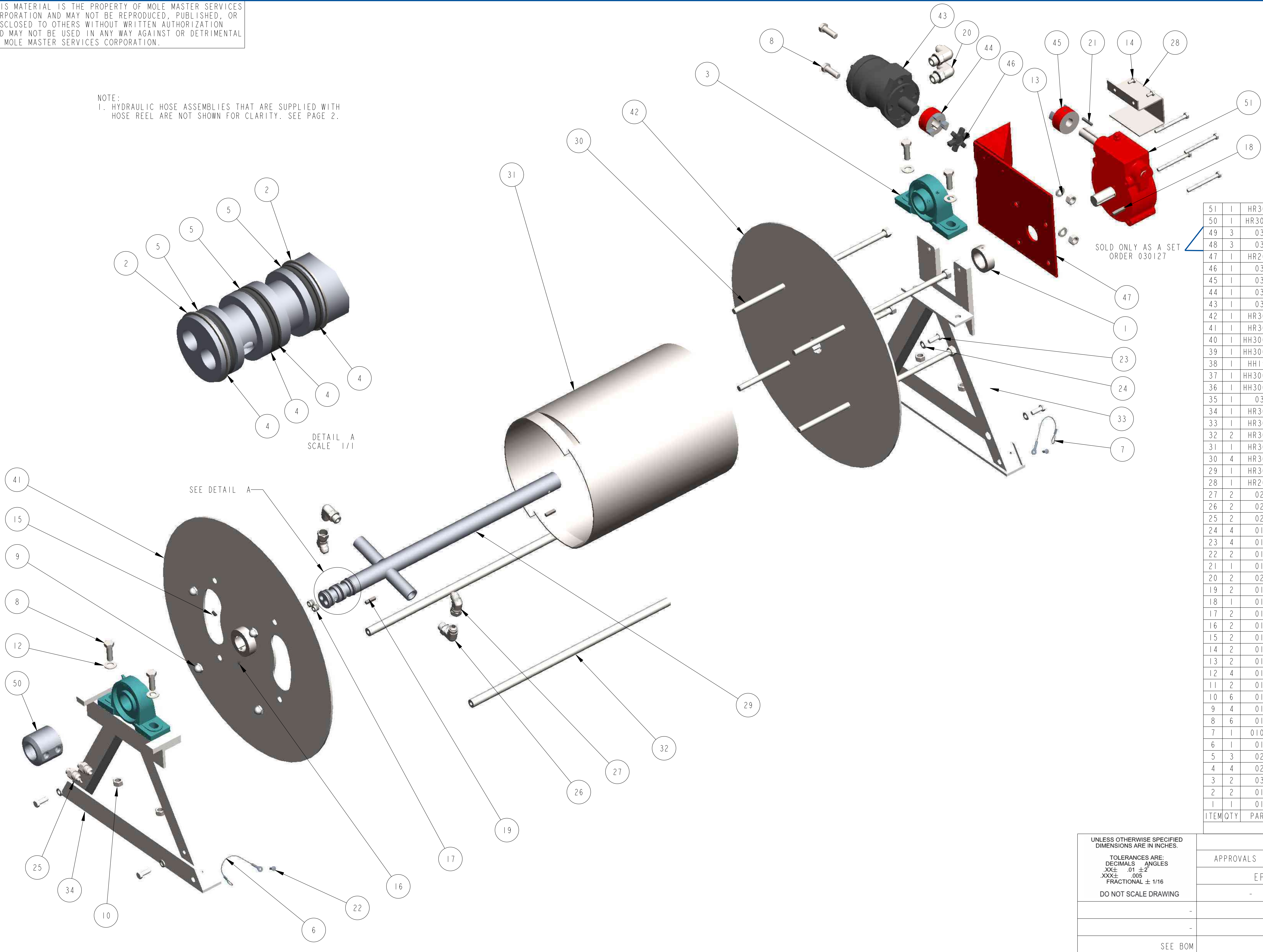


UNLESS OTHERWISE SPECIFIED DIMENSIONS ARE IN INCHES. TOLERANCES ARE: DECIMALS ANGLES .XX± .01 ±2° .XXX± .005 FRACTIONAL ± 1/16 DO NOT SCALE DRAWING			APPROVALS		DATE	MOLE-MASTER[®] SERVICES CORPORATION  27815 STATE ROUTE 7 MARIETTA, OHIO 45750 USA 740-374-6726	
			DRAWN	EPP	12-14-12		
			CHECKED	-	-		
			ENGR	-	-		
TREATMENT	-					TITLE	
						HYDRAULIC JUNIOR 360 [®]	
						MODEL NO: JR360H	
						MASTER PARTS LIST	
FINISH	-					SIZE	
						D	
MATERIAL						DWG NO.	
						PL3360H-1	REV.
						SCALE	1/8
						CALC WT	
						ACT WT	
						SHEET	2 OF 2

THIS MATERIAL IS THE PROPERTY OF MOLE MASTER SERVICES CORPORATION AND MAY NOT BE REPRODUCED, PUBLISHED, OR DISCLOSED TO OTHERS WITHOUT WRITTEN AUTHORIZATION AND MAY NOT BE USED IN ANY WAY AGAINST OR DETRIMENTAL TO MOLE MASTER SERVICES CORPORATION.

NOTE:
1. HYDRAULIC HOSE ASSEMBLIES THAT ARE SUPPLIED WITH HOSE REEL ARE NOT SHOWN FOR CLARITY. SEE PAGE 2.

REVISION HISTORY			
REV	DESCRIPTION	DATE	BY
A	ADDED 030141	03-07-16	EPP



51	1	HR3009-01	TERNER GEAR REDUCER
50	1	HR3000-031	SWIVEL FITTING
49	3	030125	QUICK COUPLING, MALE END, 1/2" FEMALE PIPE
48	3	030126	QUICK COUPLING, FEMALE END, 1/2" FEMALE PIPE
47	1	HR2003-00	MOTOR MOUNTING BRACKET WELDMENT
46	1	030116	LOVEJOY-SPIDER COUPLING-L090/L095SOX
45	1	030117	LOVEJOY COUPLER-L095X3/4HUB3/16
44	1	030118	LOVEJOY COUPLER-L095X1HUB1/4
43	1	030137	HYDRAULIC MOTOR
42	1	HR3006-00	HOSE REEL END
41	1	HR3005-00	HOSE REEL END
40	1	HH3003-00	HOSE ASSY, #8M3K, (1) 8GE-8FJX, (1) 8GE-8MP, 144" LGTH
39	1	HH3003-00	HOSE ASSY, #8M3K, (1) 8GE-8FJX, (1) 8GE-8MP, 144" LGTH
38	1	HH1920-00	HOSE ASSY, #8M3K, (2) 165'-0" LGTH, (1) HG-28, SLEEVE
37	1	HH3001-00	HOSE ASSY, #6M3K, (1) 6G-8FJX, (1) 6G-8MP, 140" LGTH
36	1	HH3001-00	HOSE ASSY, #6M3K, (1) 6G-8FJX, (1) 6G-8MP, 140" LGTH
35	1	030141	HEAT SHRINK TUBE, 4FT LG
34	1	HR3002-00	FRAME, SWIVEL SIDE
33	1	HR3001-00	FRAME, DRIVE SIDE
32	2	HR3003-01	FRAME CONNECTING ROD
31	1	HR3004-01	DRUM, HOSE REEL
30	4	HR3008-00	DRUM TIE ROD
29	1	HR3007-00	DRIVE SHAFT WELDMENT
28	1	HR2000-02	COUPLING GUARD
27	2	020113	8MJ-8FJX45, MALE JIC-FEMALE JIC SWIVEL 45° EL HYD ADPT
26	2	020114	8MB-8MJ90, MALE O RING BOSS-MALE JIC 90° EL HYD ADPT
25	2	020108	6MB-8MJ, MALE O RING BOSS-MALE JIC HYD ADAPTER
24	4	010137	3/8", SPLIT LOCK WASHER, ZP
23	4	010117	3/8-16 X 1", HHCS, GR. 5, ZP
22	2	010113	3/16", BLIND POP-RIVET, BUTTON HEAD, ALUM
21	1	010108	3/16" SQUARE X 1-1/4" L, MACHINE KEY, STL
20	2	020115	10MB-8MJ90, MALE O RING BOSS-MALE JIC 90° EL HYD ADPT
19	2	010109	1/4" SQUARE X 1" L, MACHINE KEY, STL
18	1	010110	1/4" SQUARE X 1-1/4" L, MACHINE KEY, STL
17	2	010156	1/4" MALE NPT, SCKT PIPE PLUG, 3/4 TAPER, STL
16	2	010126	1/4-20 X 1/4", SCKT. SET SCR, CUP PT, BLK. OXIDE
15	2	010127	1/4-20 X 1/2", SCKT. SET SCR, CUP PT, BLK. OXIDE
14	2	010114	1/4-20 X 1/2", HHCS, GR. 5, ZP
13	2	010138	1/2", SPLIT LOCK WASHER, ZP
12	4	010132	1/2", FLAT WASHER, SAE, ZP
11	2	010158	1/2" X 2-1/2", DETENT RING PIN
10	6	010140	1/2-13, HEX NUT, GR. A, ZP
9	4	010143	1/2-13, ACORN NUT, NICKEL PLT
8	6	010120	1/2-13 X 1-1/2", HHCS, GR. 5, ZP
7	1	010111-1	1/16" X 6", BARE CABLE, STEEL LANYARD
6	1	010111	1/16" X 6", BARE CABLE, STEEL LANYARD
5	3	020200	1-1/4 ID x 1-1/2 OD x 1/8 O-RING
4	4	020201	1-1/4 ID x 1-1/2 OD x .050 FLAT GASKET
3	2	030123	1-1/2", PILLOW BLOCK BEARING
2	2	010107	1-1/2" ID, EXTERNAL SPIRAL RING, MED DUTY, STL
1	1	010134	1-1/2" ID X 3/4" W, CLAMPING COLLAR, ZP
ITEM	QTY	PART NO.	DESCRIPTION

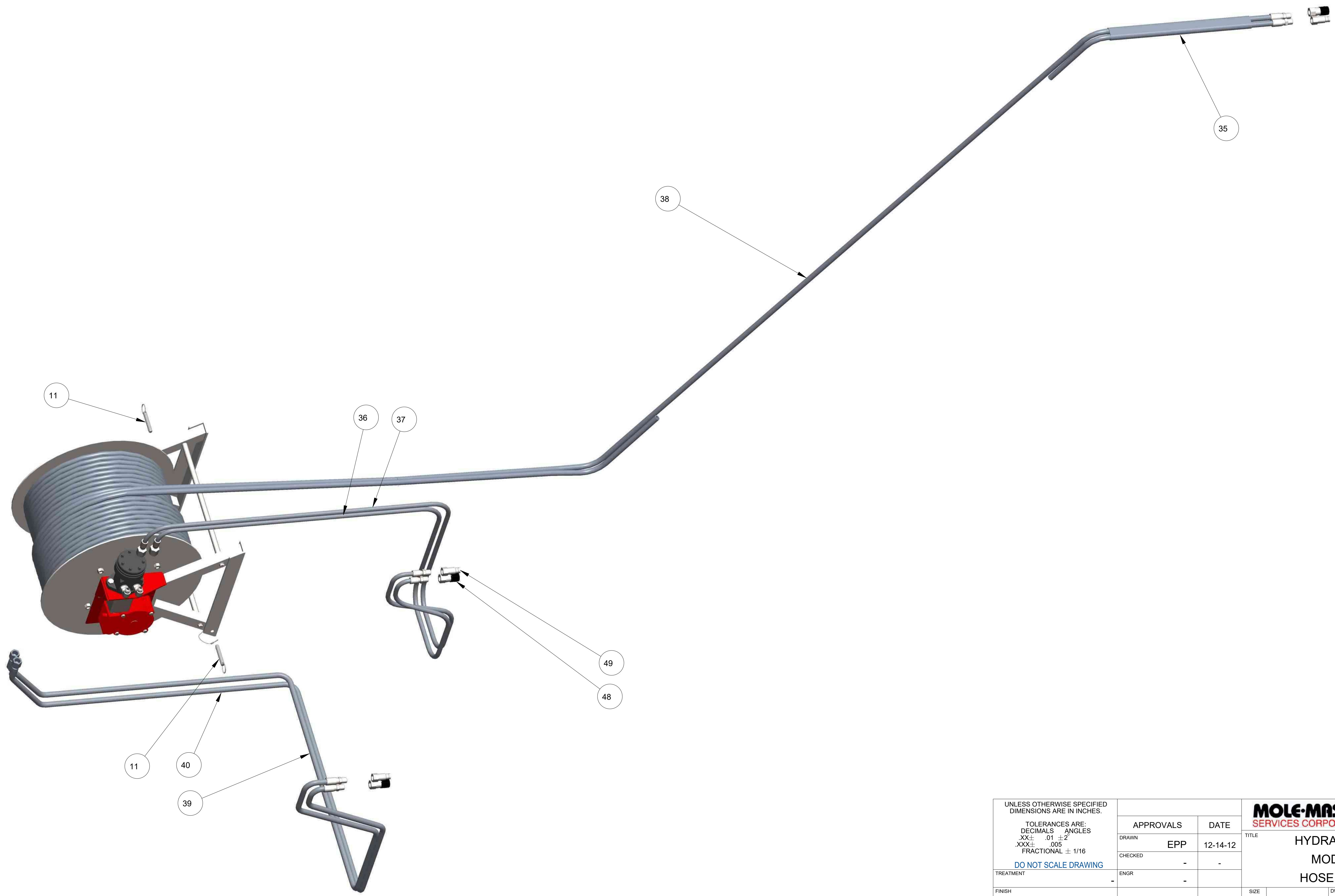
UNLESS OTHERWISE SPECIFIED
DIMENSIONS ARE IN INCHES.
TOLERANCES ARE:
DECIMALS .01 ±.02
ANGLES .005
FRACTIONAL ± 1/16
DO NOT SCALE DRAWING


APPROVALS	DATE
EPP	12-14-12
-	-
-	-

MOLE-MASTERTM SERVICES CORPORATION			27815 STATE ROUTE 7 MARIETTA, OHIO 45750 USA 740-374-6726	
HYDRAULIC JUNIOR 360° MODEL NO: JR360H HOSE REEL ASSEMBLY				
		PL3360H-2		REV. A
I / 4		LC, RT	ACT, RT	SHEET I OF I

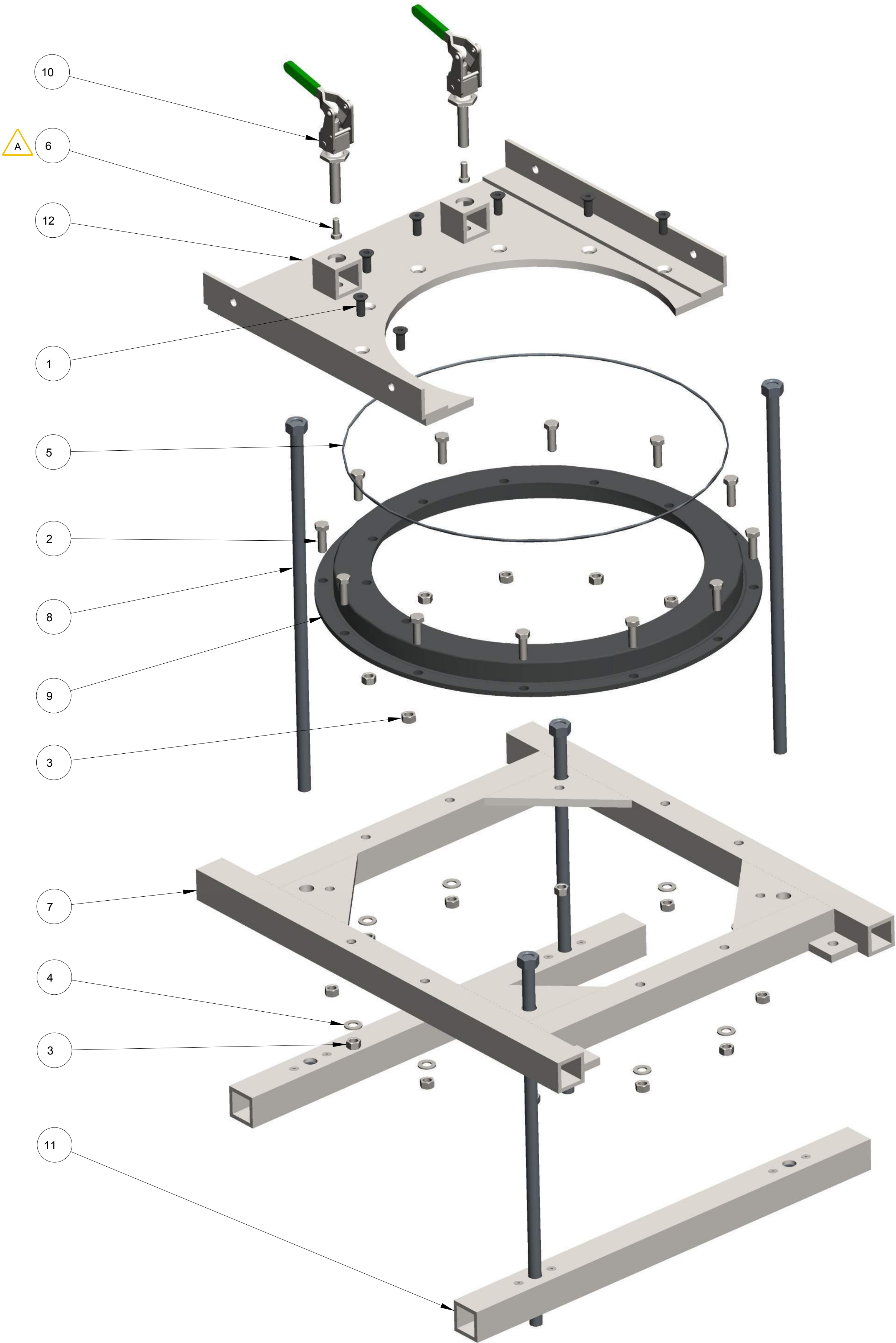
THIS MATERIAL IS THE PROPERTY OF MOLE MASTER SERVICES CORPORATION AND MAY NOT BE REPRODUCED, PUBLISHED, OR DISCLOSED TO OTHERS WITHOUT WRITTEN AUTHORIZATION AND MAY NOT BE USED IN ANY WAY AGAINST OR DETRIMENTAL TO MOLE MASTER SERVICES CORPORATION.

REVISION HISTORY			
REV	DESCRIPTION	DATE	BY
A	ADDED 030141	03-07-16	EPP



UNLESS OTHERWISE SPECIFIED DIMENSIONS ARE IN INCHES. TOLERANCES ARE: DECIMALS ANGLES .XX± .01 ±2° .XXX± .005 FRACTIONAL ± 1/16 DO NOT SCALE DRAWING			APPROVALS		DATE	 27815 STATE ROUTE 7 MARIETTA, OHIO 45750 USA 740-374-6726	
			DRAWN	EPP	12-14-12		
			CHECKED	-	-	TITLE HYDRAULIC JUNIOR 360 MODEL NO: JR360H HOSE REEL ASSEMBLY	
			ENGR	-	-		
TREATMENT	-					SIZE D	REV. A
FINISH	-					DWG NO. PL3360H-2	
MATERIAL						SCALE 3/20	
						CALC WT	ACT WT
						SHEET	2 OF 2

THIS MATERIAL IS THE PROPERTY OF MOLE MASTER SERVICES CORPORATION AND MAY NOT BE REPRODUCED, PUBLISHED, OR DISCLOSED TO OTHERS WITHOUT WRITTEN AUTHORIZATION AND MAY NOT BE USED IN ANY WAY AGAINST OR DETRIMENTAL TO MOLE MASTER SERVICES CORPORATION.



REVISION HISTORY			
REV	DESCRIPTION	DATE	BY
A	ADDED (2) 010117 TO BOM	03-12-14	EPP

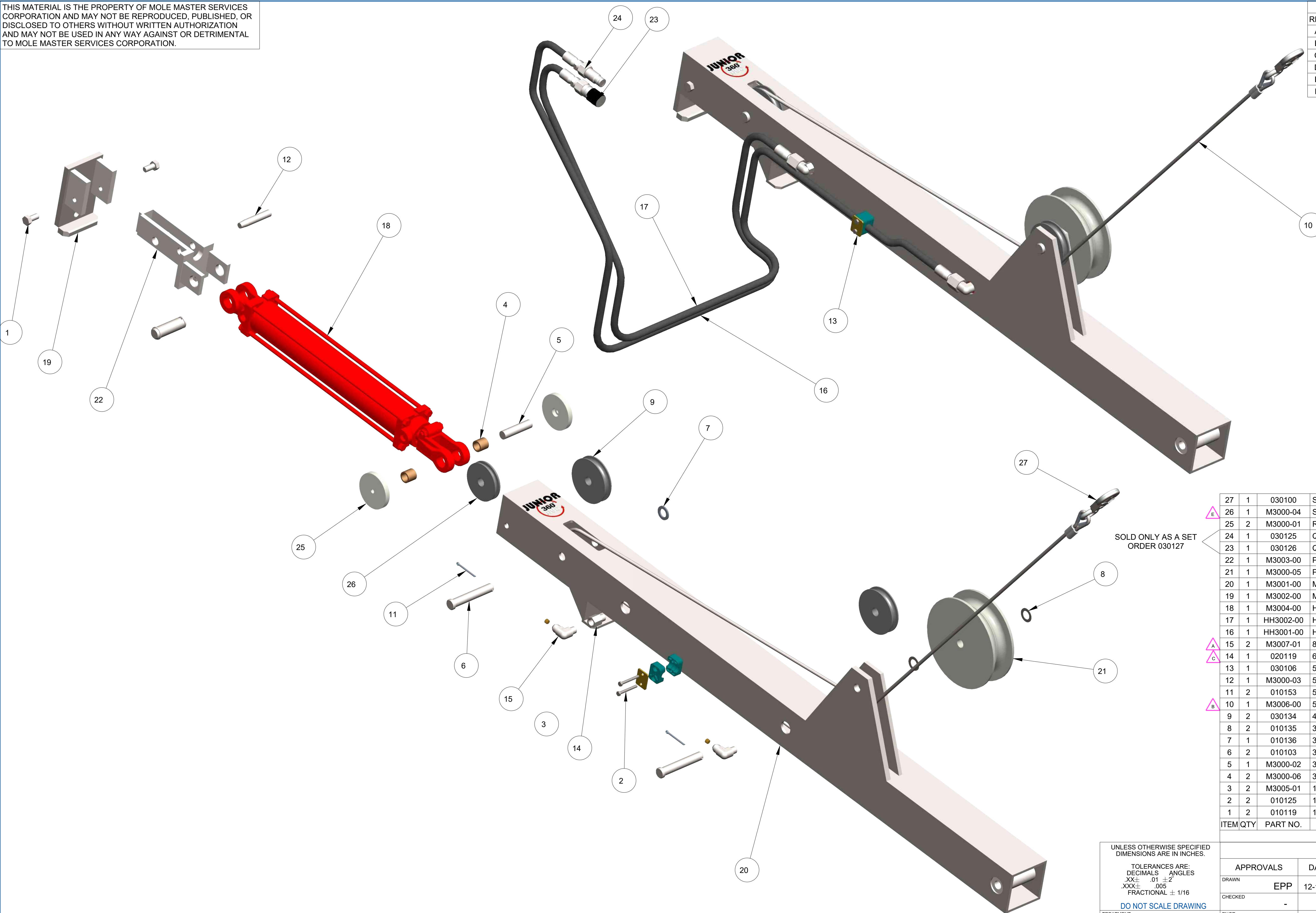
12	1	BF3001-00	UPPER SUPPORT
11	2	BF2003-00	UNDER ROOF LOCKING BAR ASS'Y
10	2	030107	PLUNGER TOGGLE CLAMP
9	1	4001	MAIN ROTATION BEARING
8	4	BF2004-00	LOCKING BAR ATTACHMENT BOLT
7	1	BF2002-00	BEARING SUPPORT
6	2	010117	3/8-16 X 1", HHCS, GR. 5, ZP
5	1	020205	22" ID X .210" CS BUNA O-RING, VULCANIZE
4	8	010132	1/2", FLAT WASHER, SAE, ZP
3	19	010140	1/2-13, HEX NUT, GR. A, ZP
2	12	010120	1/2-13 X 1-1/2", HHCS, GR. 5, ZP
1	7	010124	1/2-13 X 1-1/2", FHSCS, BLK. OXIDE
ITEM	QTY	PART NO.	DESCRIPTION

A


UNLESS OTHERWISE SPECIFIED DIMENSIONS ARE IN INCHES. TOLERANCES ARE: DECIMALS ANGLES .XX± .01 ±2° .XXX± .005 FRACTIONAL ± 1/16 DO NOT SCALE DRAWING		APPROVALS		DATE	27815 STATE ROUTE 7 MARIETTA, OHIO 45750 USA 740-374-6726	
		DRAWN	EPP	12-14-12		
TREATMENT	-	CHECKED	-	-	TITLE HYDRAULIC JUNIOR 360 MODEL NO: JR360H BEARING FRAME ASSEMBLY	
FINISH	-	ENGR				
MATERIAL	SEE BOM	SCALE		1/4	SHEET	
		SIZE		D	REV.	
		DWG NO.		PL3360H-3	A	
		CALC. WT		ACT. WT	1 OF 1	

THIS MATERIAL IS THE PROPERTY OF MOLE MASTER SERVICES CORPORATION AND MAY NOT BE REPRODUCED, PUBLISHED, OR DISCLOSED TO OTHERS WITHOUT WRITTEN AUTHORIZATION AND MAY NOT BE USED IN ANY WAY AGAINST OR DETRIMENTAL TO MOLE MASTER SERVICES CORPORATION.

REVISION HISTORY			
REV	DESCRIPTION	DATE	BY
A	M3007-01 WAS 020100	03-05-14	EPP
B	CREATED M3006-00, CABLE ASSEMBLY	11-30-15	EPP
C	ADDED 020119 TO BOM	12-09-16	EPP
D	MOVED 010148 FROM JB3000-00	07-22-19	EPP
E	RVSD DESCRIPTION OF M3000-04	01-08-20	EPP
F	030100 WAS 010148	04-13-20	EPP

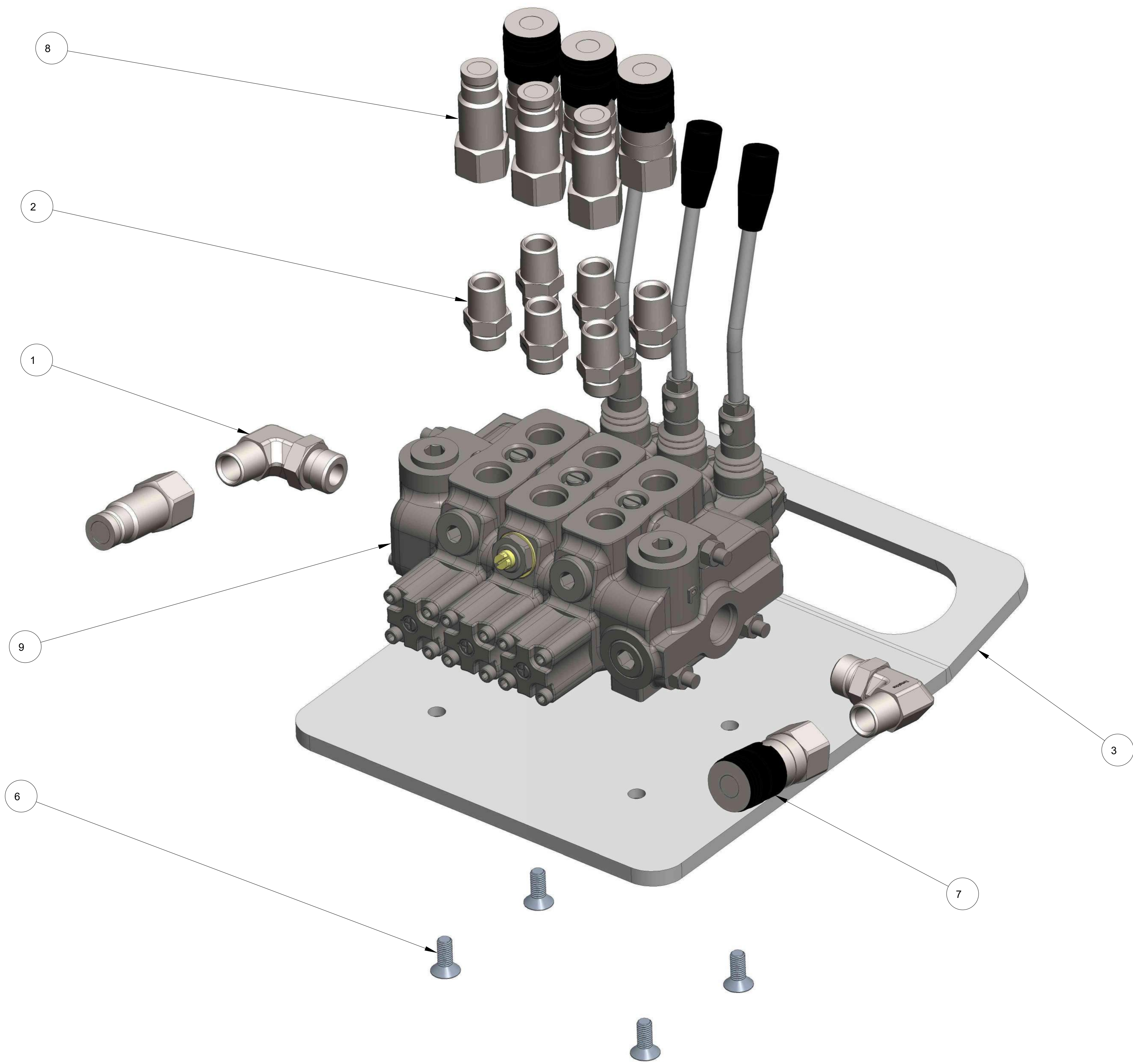


E	27	1	030100	SNAP HOOK WITH DOUBLE SAFETY LATCH
	26	1	M3000-04	SHEAVE, 3-1/2"OD, 3/8" ROPE, 3/4" BUSHING
	25	2	M3000-01	ROLLER
	24	1	030125	QUICK COUPLING, MALE END, 1/2" FEMALE PIPE
D	23	1	030126	QUICK COUPLING, FEMALE END, 1/2" FEMALE PIPE
	22	1	M3003-00	PULLEY/CYLINDER MOUNT
	21	1	M3000-05	PULLEY, DOUBLE SPOOL
	20	1	M3001-00	MAST TUBE
C	19	1	M3002-00	MAST TOP CAP WELDMENT
	18	1	M3004-00	HYDRAULIC TIE-ROD CYLINDER
	17	1	HH3002-00	HOSE ASSY, #6M3K, (1) 6G-8FJX, (1) 6G-8MP, 160" CUT LGTH
	16	1	HH3001-00	HOSE ASSY, #6M3K, (1) 6G-8FJX, (1) 6G-8MP, 140" LGTH
B	15	2	M3007-01	8MJ-6MP90, MODIFIED MALE JIC-MALE PIPE 90° ELBOW
	14	1	020119	6MP-6FPL, MAPLE PIPE-FEMALE PIPE LONG HYD ADAPTER
	13	1	030106	5/8" TUBE CLAMP
	12	1	M3000-03	5/8" OD TAPERED DOWEL PIN
A	11	2	010153	5/32" x 2", COTTER PIN, ZP
	10	1	M3006-00	5/16" GALV AIRCRAFT CABLE ASSEMBLY, 165" LG
	9	2	030134	4" OD, 1/2" ROPE SHEEVE WITH 3/4" BUSHING
	8	2	010135	3/4", MACHINERY BUSHING, 18 GA., PLN FIN
	7	1	010136	3/4", MACHINERY BUSHING, 10 GA., PLN FIN
	6	2	010103	3/4" X 4-1/2", CLEVIS PIN, ZP
	5	1	M3000-02	3/4" x 3-1/8" STEEL DOWEL PIN, ZP
	4	2	M3000-06	3/4" ID x 1" OD x 15/16" LG. BUSHING, BRONZE
	3	2	M3005-01	1/8" NPT BRASS SOCKET HEAD PIPE PLUG W/ ORIFICE
	2	2	010125	1/4-20 X 2", HHCS, GR. 5, ZP
	1	2	010119	1/2-13 X 1", HHCS, GR. 5, ZP
	ITEM/ QTY		PART NO.	

UNLESS OTHERWISE SPECIFIED DIMENSIONS ARE IN INCHES. TOLERANCES ARE: DECIMALS ANGLES .XX± .01 ±2 .XXX± .005 FRACTIONAL ± 1/16 DO NOT SCALE DRAWING		APPROVALS DATE		 27815 STATE ROUTE 7 MARIETTA, OHIO 45750 USA 740-374-6726	
		DRAWN EPP	12-14-12		
CHECKED		- -		TITLE HYDRAULIC JUNIOR 360 MODEL NO: JR360H MAST ASSEMBLY	
ENGR		- -			
FINISH		- -			
MATERIAL		- -			
SEE BOM				SIZE DWG NO. REV. D PL3360H-4 F	
		SCALE 1/4		CALC WT ACT. WT SHEET 1 OF 1	

THIS MATERIAL IS THE PROPERTY OF MOLE MASTER SERVICES CORPORATION AND MAY NOT BE REPRODUCED, PUBLISHED, OR DISCLOSED TO OTHERS WITHOUT WRITTEN AUTHORIZATION AND MAY NOT BE USED IN ANY WAY AGAINST OR DETRIMENTAL TO MOLE MASTER SERVICES CORPORATION.

REVISION HISTORY			
REV	DESCRIPTION	DATE	BY
A	VALVE RVSD FROM PARKER TO YOULI	01-08-20	EPP



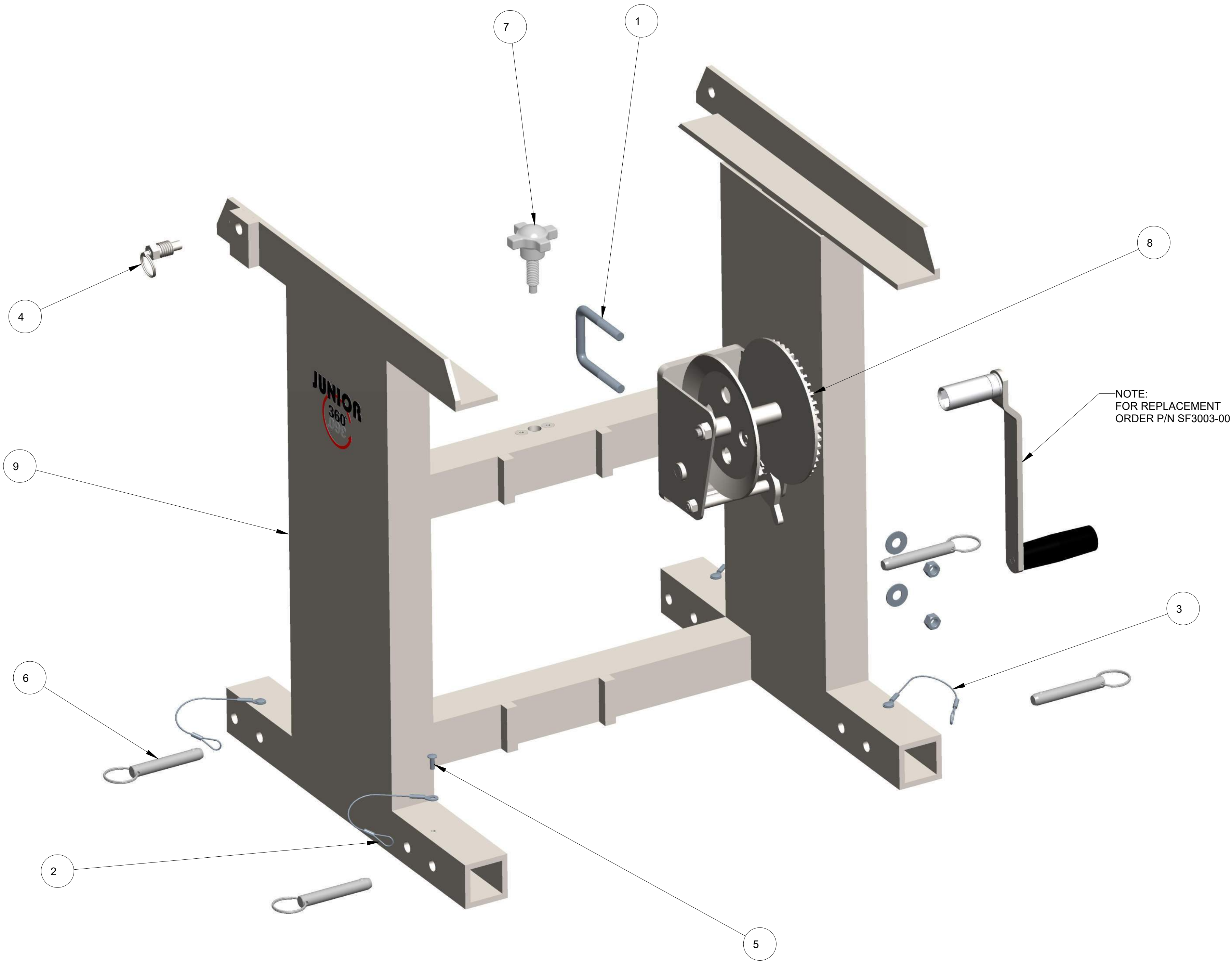
NOTE:
1. HYDRAULIC HOSE ASSEMBLIES ARE NOT SHOWN FOR CLARITY.
2. QUICK COUPLINGS THAT CONNECT TO HYDRAULIC HOSES ARE NOT SHOWN FOR CLARITY

SOLD ONLY AS A SET ORDER 030127	9	1	030152	YOU LI 3-SPOOL CONTROL VALVE
	8	6	030125	QUICK COUPLING, MALE END, 1/2" FEMALE PIPE
	7	6	030126	QUICK COUPLING, FEMALE END, 1/2" FEMALE PIPE
	6	4	010160	M8 X 1.25 X 20mm FHMS, ZP
	5	1	HH0120-1	HOSE ASSY,#8M3K,(2) 8GE-8MP, 120" LGTH
	4	1	HH0120-1	HOSE ASSY,#8M3K,(2) 8GE-8MP, 120" LGTH
	3	1	CV3200-01	CONTROL VALVE MOUNTING PLATE
	2	6	020109	8MB-8MP, MALE O RING BOSS-MALE PIPE THREAD HYD ADAPTER
	1	2	050109	10MB-8MP90, MALE O RING BOSS-MALE PIPE 90 D ELBOW HYD ADAPT
		ITEM	QTY	PART NO.


UNLESS OTHERWISE SPECIFIED DIMENSIONS ARE IN INCHES. TOLERANCES ARE: DECIMALS ANGLES .XX± .01 ±2° .XXX± .005 FRACTIONAL ± 1/16 DO NOT SCALE DRAWING		APPROVALS		DATE	<div>MOLE-MASTER SERVICES CORPORATION</div> <div>TITLE</div> <div>HYDRAULIC JUNIOR 360</div> <div>MODEL NO: JR360H</div> <div>CONTROL VALVE ASSEMBLY</div> <div>DWG NO.</div> <div>PL3360H-5</div> <div>REV.</div> <div>A</div>	
		DRAWN	EPP	12-14-12		
		CHECKED	-	-		
		ENGR				
TREATMENT	-				SIZE	
FINISH	-				D	
MATERIAL	SEE BOM				SCALE	3/4
		CALC. WT	ACT. WT	SHEET	1 OF 1	

THIS MATERIAL IS THE PROPERTY OF MOLE MASTER SERVICES CORPORATION AND MAY NOT BE REPRODUCED, PUBLISHED, OR DISCLOSED TO OTHERS WITHOUT WRITTEN AUTHORIZATION AND MAY NOT BE USED IN ANY WAY AGAINST OR DETRIMENTAL TO MOLE MASTER SERVICES CORPORATION.

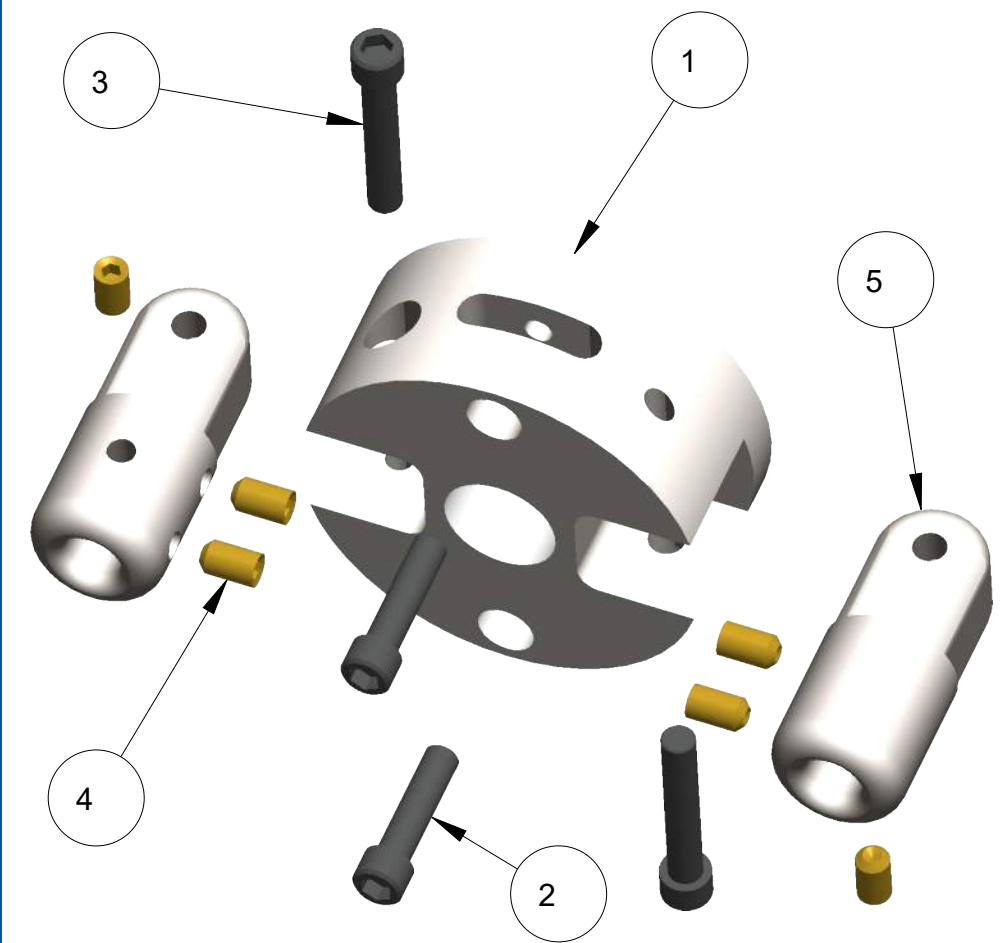
REVISION HISTORY			
REV	DESCRIPTION	DATE	BY
A	RVSD BOM. CREATED SF3010-00 WELDMENT	10-19-15	EPP
B	MADE HANDLE PART OF WINCH ASSY	01-08-20	EPP



9	1	SF3010-00	UPPER SUPPORT FRAME WELDMENT
8	1	SF3002-00	MODIFIED WINCH ASSEMBLY
7	1	090107	1/2-13 x 1-1/2", HAND KNOB
6	4	010158	1/2" X 2-1/2", DETENT RING PIN
5	4	010113	3/16", BLIND POP-RIVET, BUTTON HEAD, ALUM
4	1	010112	5/8-11, HEX PULL PIN
3	2	010111	1/16" X 6", BARE CABLE, STEEL LANYARD
2	2	010111	1/16" X 6", BARE CABLE, STEEL LANYARD
1	1	010101	3/8-16 X 2" X 3", U-BOLT, ZP
ITEM	QTY	PART NO.	DESCRIPTION

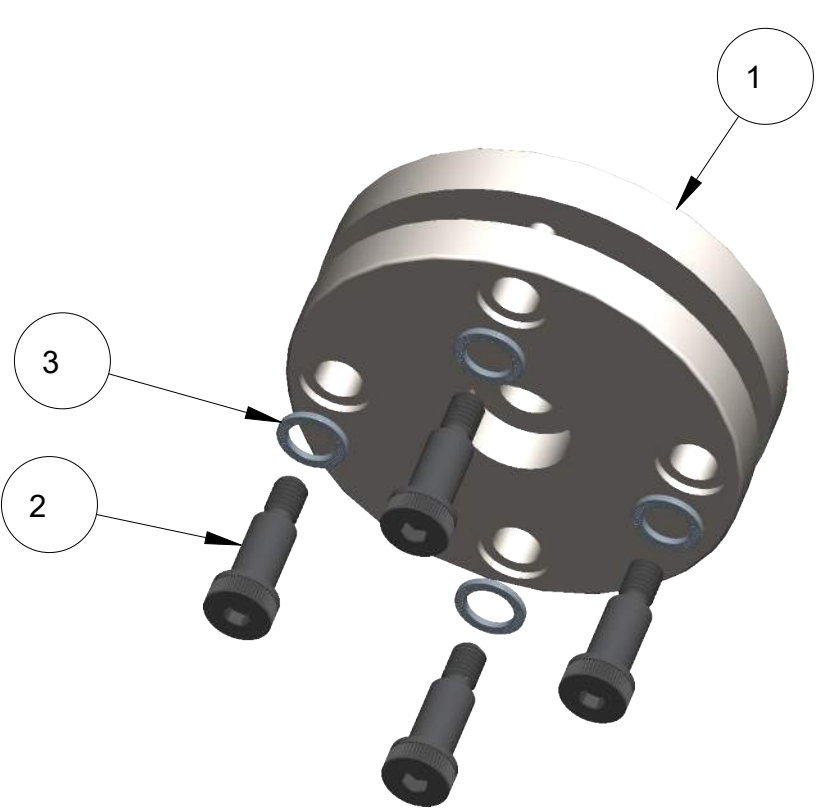
UNLESS OTHERWISE SPECIFIED DIMENSIONS ARE IN INCHES. TOLERANCES ARE: DECIMALS ANGLES .XX± .01 ±2° .XXX± .005 FRACTIONAL ± 1/16 DO NOT SCALE DRAWING		APPROVALS		DATE	<div><div>MOLE-MASTER[™]</div><div>SERVICES CORPORATION</div><div></div></div> <div>TITLE</div> <div>HYDRAULIC JUNIOR 360</div> <div>MODEL NO: JR360H</div> <div>UPPER SUPPORT FRAME ASSY</div> <div>PL3360H-6</div>		27815 STATE ROUTE 7 MARIETTA, OHIO 45750 USA 740-374-6726			
		DRAWN	EPP	12-14-12						
		CHECKED	-	-						
		ENGR	-	-						
TREATMENT	-				SIZE	DWG NO.	REV.			
FINISH	-				D	PL3360H-6	B			
MATERIAL	SEE BOM				SCALE	3/8	CALC. WT 34.5 lbs.	ACT. WT -	SHEET	1 OF 1

THIS MATERIAL IS THE PROPERTY OF MOLE MASTER SERVICES CORPORATION AND MAY NOT BE REPRODUCED, PUBLISHED, OR DISCLOSED TO OTHERS WITHOUT WRITTEN AUTHORIZATION AND MAY NOT BE USED IN ANY WAY AGAINST OR DETRIMENTAL TO MOLE MASTER SERVICES CORPORATION.



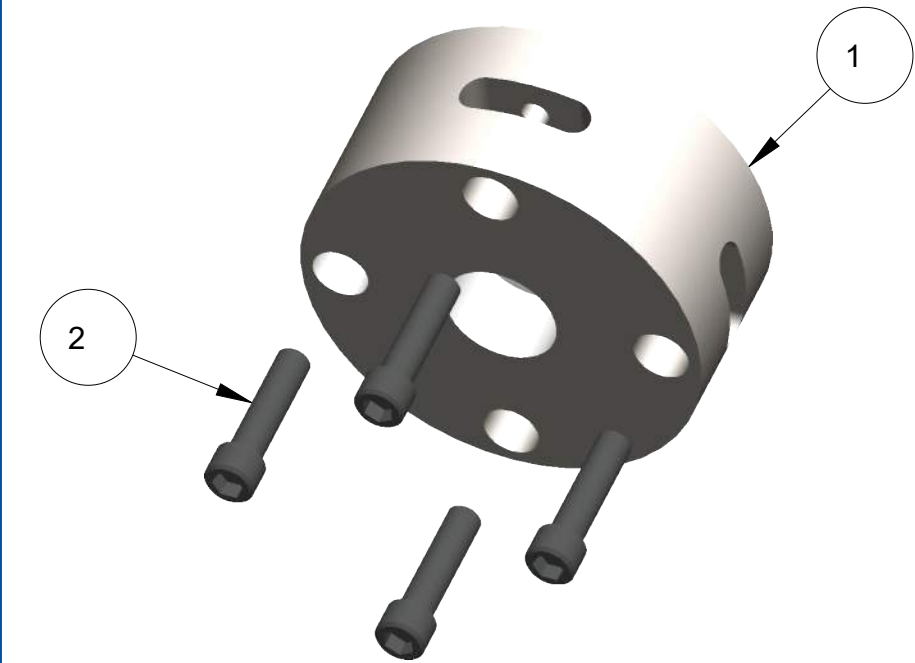
CH3022-00 (2 CHAIN & 2 WHIP CUTTER HEAD ASSEMBLY)

ITEM	QTY	PART NO.	DESCRIPTION
5	2	CH3007-02	WHIP CUTTER ATTACHMENT HOUSING
4	6	010100	3/8-16 X 5/8", SCKT. SET SCR, BR
3	2	010122	3/8-16 X 2-1/4", SHCS, BLK. OXIDE
2	2	010121	3/8-16 X 1-1/2", SHCS, BLK. OXIDE
1	1	CH3022-01	2 CHAIN & 2 WHIP CUTTER HEAD
BILL OF MATERIALS			



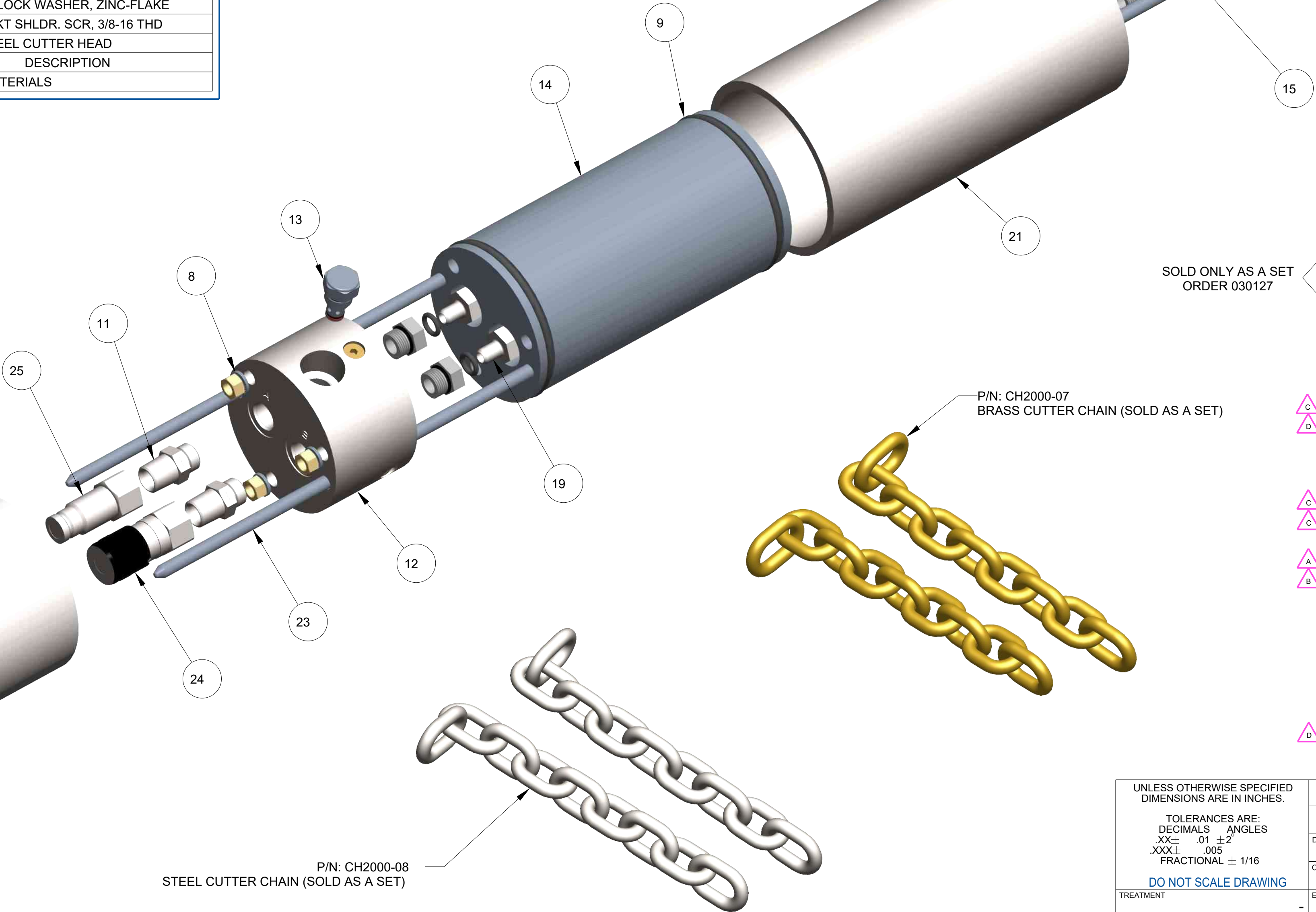
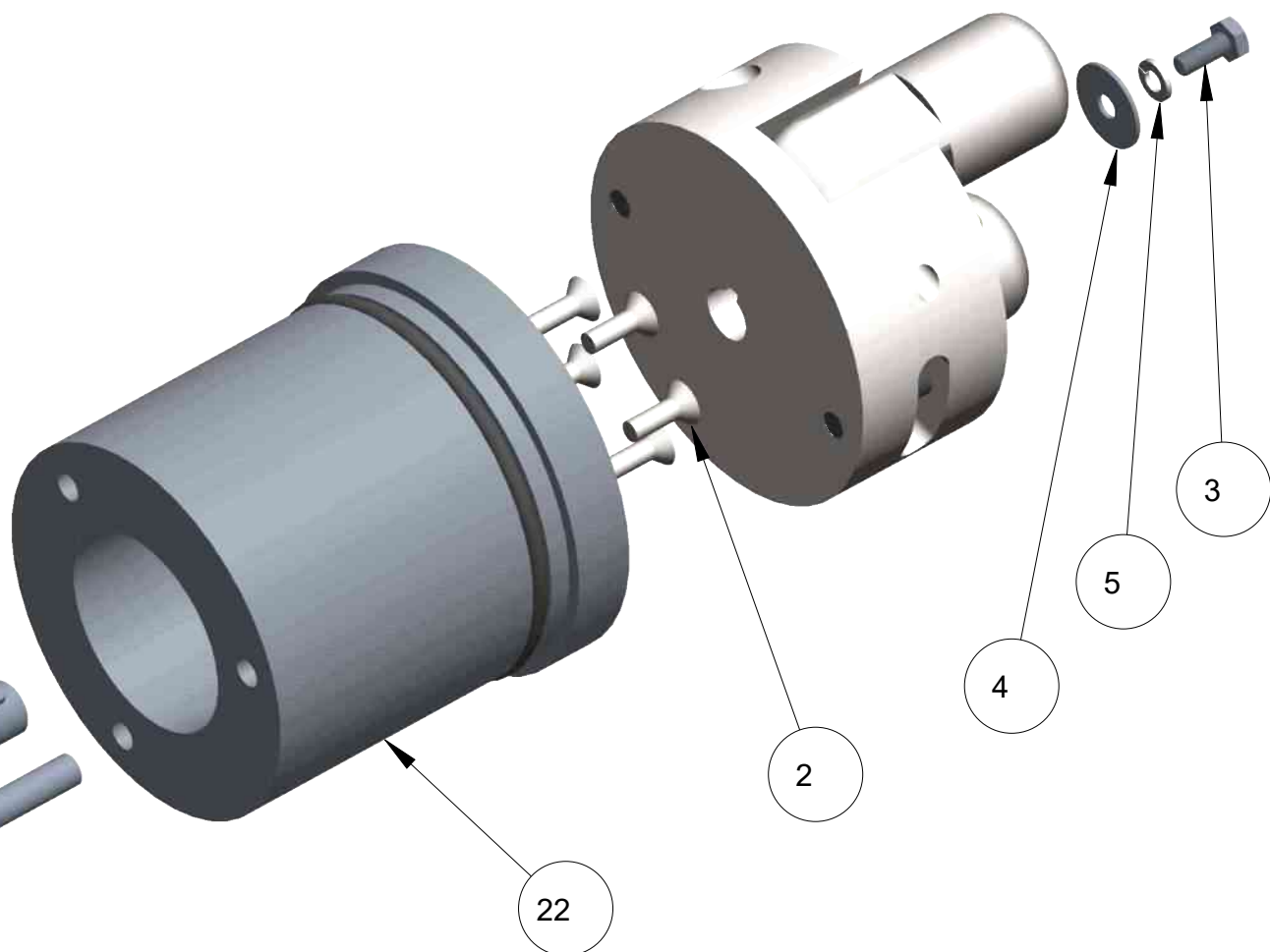
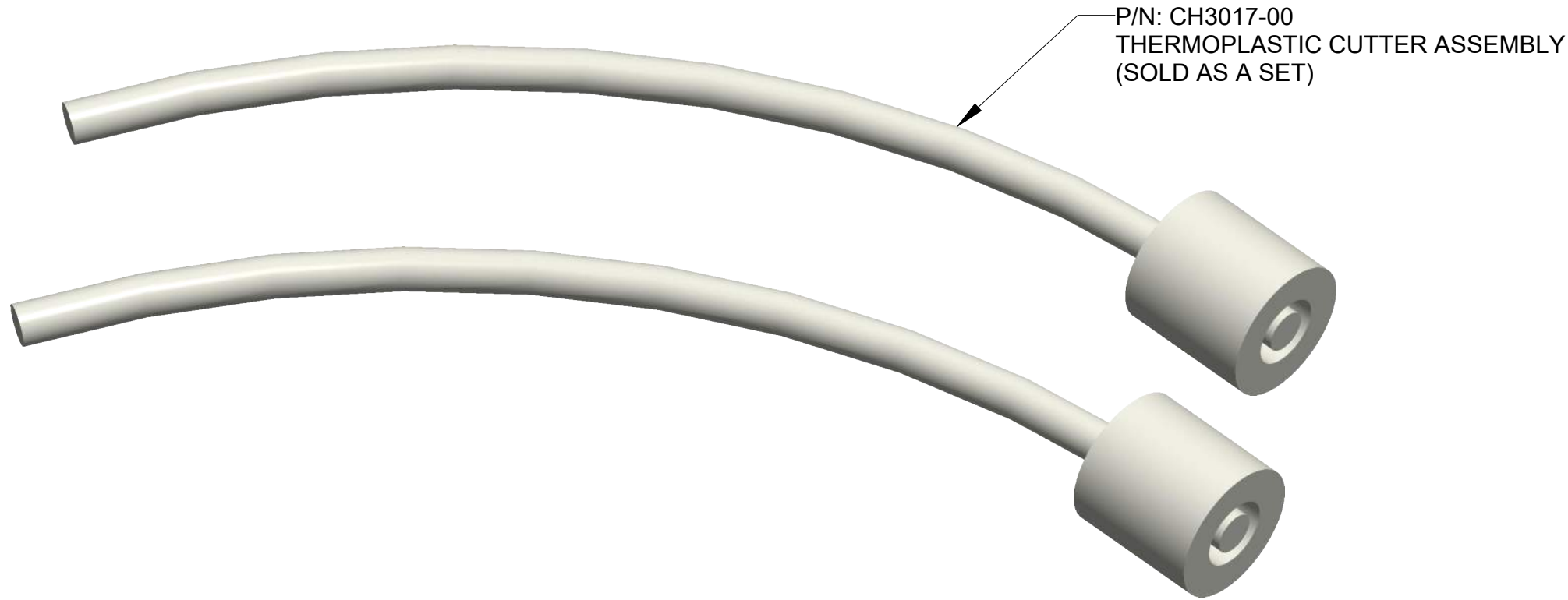
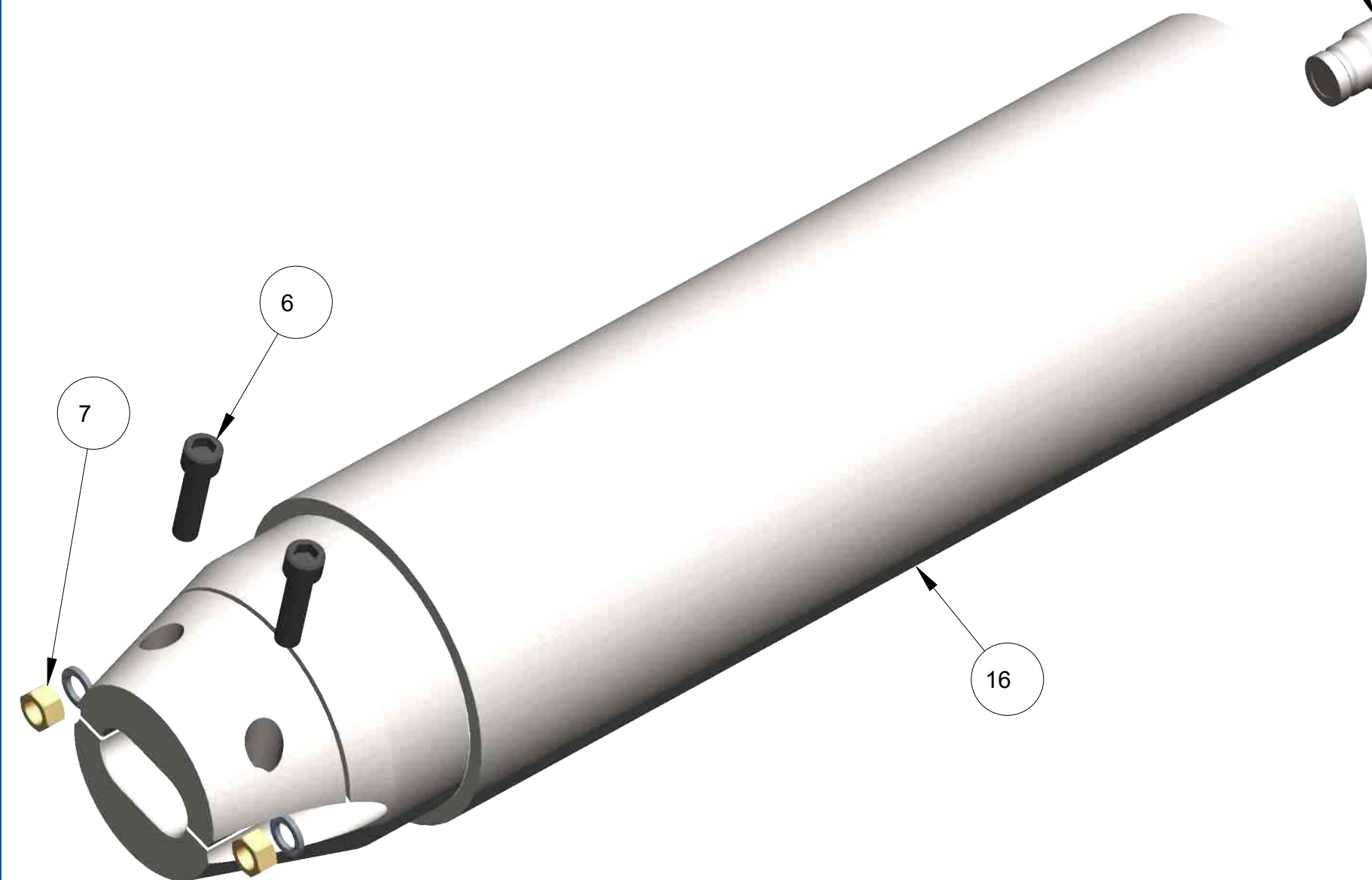
CH3023-00 (4 CHAIN STEEL CUTTER HEAD ASSEMBLY)

ITEM	QTY	PART NO.	DESCRIPTION
3	4	010106	1/2", NORD-LOCK WASHER, ZINC-FLAKE
2	4	010129	1/2 X 1", SCKT SHLDR. SCR, 3/8-16 THD
1	1	CH3023-01	4 CHAIN STEEL CUTTER HEAD
BILL OF MATERIALS			



CH3024-00 (4 CHAIN CUTTER HEAD ASSEMBLY)

ITEM	QTY	PART NO.	DESCRIPTION
2	4	010121	3/8-16 X 1-1/2", SHCS, BLK. OXIDE
1	1	CH3024-01	4 CHAIN CUTTER HEAD
BILL OF MATERIALS			



REVISION HISTORY			
REV	DESCRIPTION	DATE	BY
A	ADDED (2) 020207	02-25-14	EPP
B	ADDED (1) CH3007-00, REMOVED (1) 020204	02-19-15	EPP
C	ADDED MANIFOLD, CARTRIDGE, AND FITTINGS	03-04-16	EPP
D	RVSD MOTOR AND CUTTER HEAD PART NO.	04-13-20	EPP

SOLD ONLY AS A SET
ORDER 030127

ITEM	QTY	PART NO.	DESCRIPTION
25	1	030125	QUICK COUPLING, MALE END, 1/2" FEMALE PIPE
24	1	030126	QUICK COUPLING, FEMALE END, 1/2" FEMALE PIPE
23	2	CH3005-01	OUTER HOUSING ATTACHING ROD
22	1	CH3009-01	MOTOR MOUNT
21	1	CH3001-01	MOTOR HOUSING
20	4	CH3012-01	MODIFIED, 8MB-PLUG
19	2	CH3021-01	MODIFIED, 8MB-6MJ
18	2	CH3011-01	MODIFIED, 6MB-6MJ
17	1	030155	J-SERIES HYDRAULIC MOTOR
16	1	CH3002-00	COUNTER WEIGHT HOUSING WELDMENT
15	3	CH3006-01	COUNTER WEIGHT CONNECTING ROD
14	1	CH3010-01	COUNTER WEIGHT
13	1	030146	CHECK VALVE CARTRIDGE, 5 PSI
12	1	030145	ANTI-CAVATATION MANIFOLD
11	2	020109	8MB-8MP, MALE O RING BOSS-MALE PIPE THREAD HYD ADAPTER
10	4	020207	7/16" ID X 1 1/16" OD X 1/8" WIDE VITON O-RING
9	3	020204	4" ID X 4-3/8" OD X 3/16" BUNA O-RING
8	5	010105	3/8", NORD-LOCK WASHER, ZINC-FLAKE
7	5	010104	3/8-24, HEX NUT, GR. 5, YZ
6	2	010121	3/8-16 X 1-1/2", SHCS, BLK. OXIDE
5	1	010162	1/4", SPLIT LOCK WASHER, ZP
4	1	010161	1/4" X1"OD FENDER WASHER ZP
3	1	010163	1/4-28 X 5/8", HHCS, GR. 5, ZP
2	5	010123	1/4-28 X 3/4", FHSCS, BLK. OXIDE
1	1	CH3022-00	2 CHAIN & 2 WHIP CUTTER HEAD ASSY
BILL OF MATERIALS			

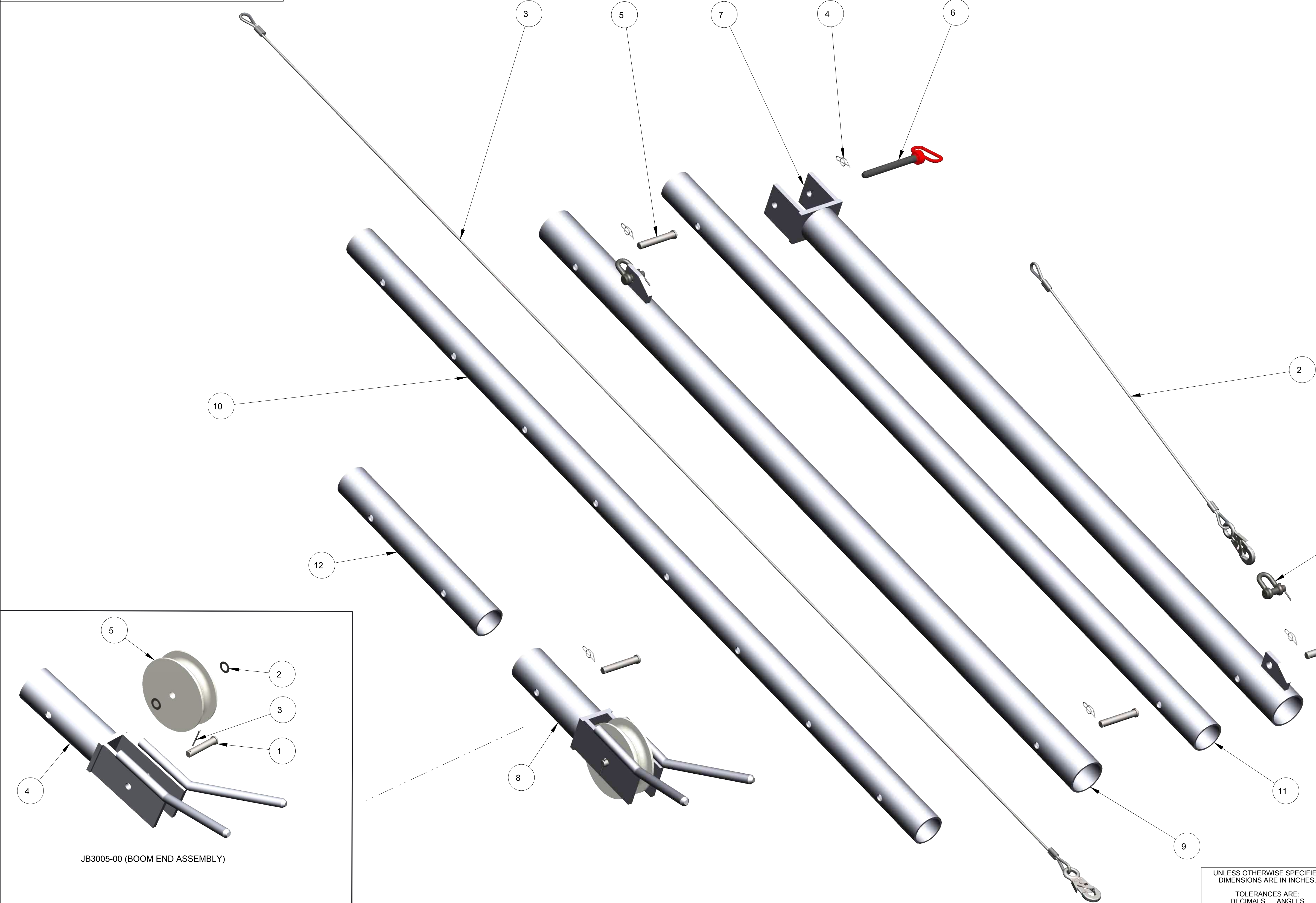
UNLESS OTHERWISE SPECIFIED DIMENSIONS ARE IN INCHES.			
TOLERANCES ARE: DECIMALS ANGLES .XX± .01 ±2° .XXX± .005 FRACTIONAL ± 1/16			
DO NOT SCALE DRAWING			
TREATMENT	-	ENGR	
FINISH	-		
MATERIAL	SEE BOM		

APPROVALS		DATE
DRAWN	EPP	12-14-12
CHECKED	-	-
ENGR		

MOLE-MASTER SERVICES CORPORATION		27815 STATE ROUTE 7 MARIETTA, OHIO 45750 USA 740-374-6726
TITLE		HYDRAULIC JUNIOR 360 MODEL NO: JR360H CUTTING HEAD ASSEMBLY
SIZE	DWG NO.	REV.
D	PL3360H-7	D
SCALE	1/2	1 OF 1

THIS MATERIAL IS THE PROPERTY OF MOLE MASTER SERVICES CORPORATION AND MAY NOT BE REPRODUCED, PUBLISHED, OR DISCLOSED TO OTHERS WITHOUT WRITTEN AUTHORIZATION AND MAY NOT BE USED IN ANY WAY AGAINST OR DETRIMENTAL TO MOLE MASTER SERVICES CORPORATION.

REVISION HISTORY			
REV	DESCRIPTION	DATE	BY
A	RVSD JB3005-00 BOM	02-15-16	EPP
B	MOVED 010148 TO M3000-00	07-22-19	EPP



ITEM	QTY	PART NO.	DESCRIPTION
13	1	JB3008-00	EYE BOLT CLEVIS PIN
12	1	JB3006-01	BOOM EXTENSION
11	1	JB3004-01	BOOM EXTENSION
10	1	JB3003-01	BOOM EXTENSION
9	1	JB3002-00	BOOM EXTENSION
8	1	JB3005-00	BOOM END ASSEMBLY
7	1	JB3001-00	BOOM
6	1	030105	3/4" x 6-1/2" VINYL COATED HITCH PIN
5	3	010103	3/4" X 4-1/2", CLEVIS PIN, ZP
4	5	010159	3/4" SHAFT, RUE RING LOCKING COTTER PIN
3	1	JB3009-00	1/4" GALV AIRCRAFT CABLE ASSEMBLY 138-3/4" LG
2	1	JB3007-00	1/4" GALV AIRCRAFT CABLE ASSEMBLY 50-1/4" LG
1	1	030124	1/2" ROUND PIN CHAIN SHACKLE

ITEM	QTY	PART NO.	DESCRIPTION
5	1	M3000-05	PULLEY, DOUBLE SPOOL
4	1	JB3015-00	BOOM END WELDMENT
3	1	010153	5/32" x 2", COTTER PIN, ZP
2	2	010135	3/4", MACHINERY BUSHING, 18 GA., PLN FIN
1	1	010102	3/4" X 4", CLEVIS PIN, ZP

BILL OF MATERIALS

UNLESS OTHERWISE SPECIFIED
DIMENSIONS ARE IN INCHES.

TOLERANCES ARE:
DECIMALS ANGLES
.XX± .01 ±2°
.XXX± .005
FRACTIONAL ± 1/16

DO NOT SCALE DRAWING

TREATMENT -

FINISH -

MATERIAL SEE BOM

APPROVALS	DATE
DRAWN EPP	03-12-13
CHECKED -	-
ENGR	

MOLE-MASTER SERVICES CORPORATION

27815 STATE ROUTE 7
MARIETTA, OHIO 45750 USA
740-374-6726

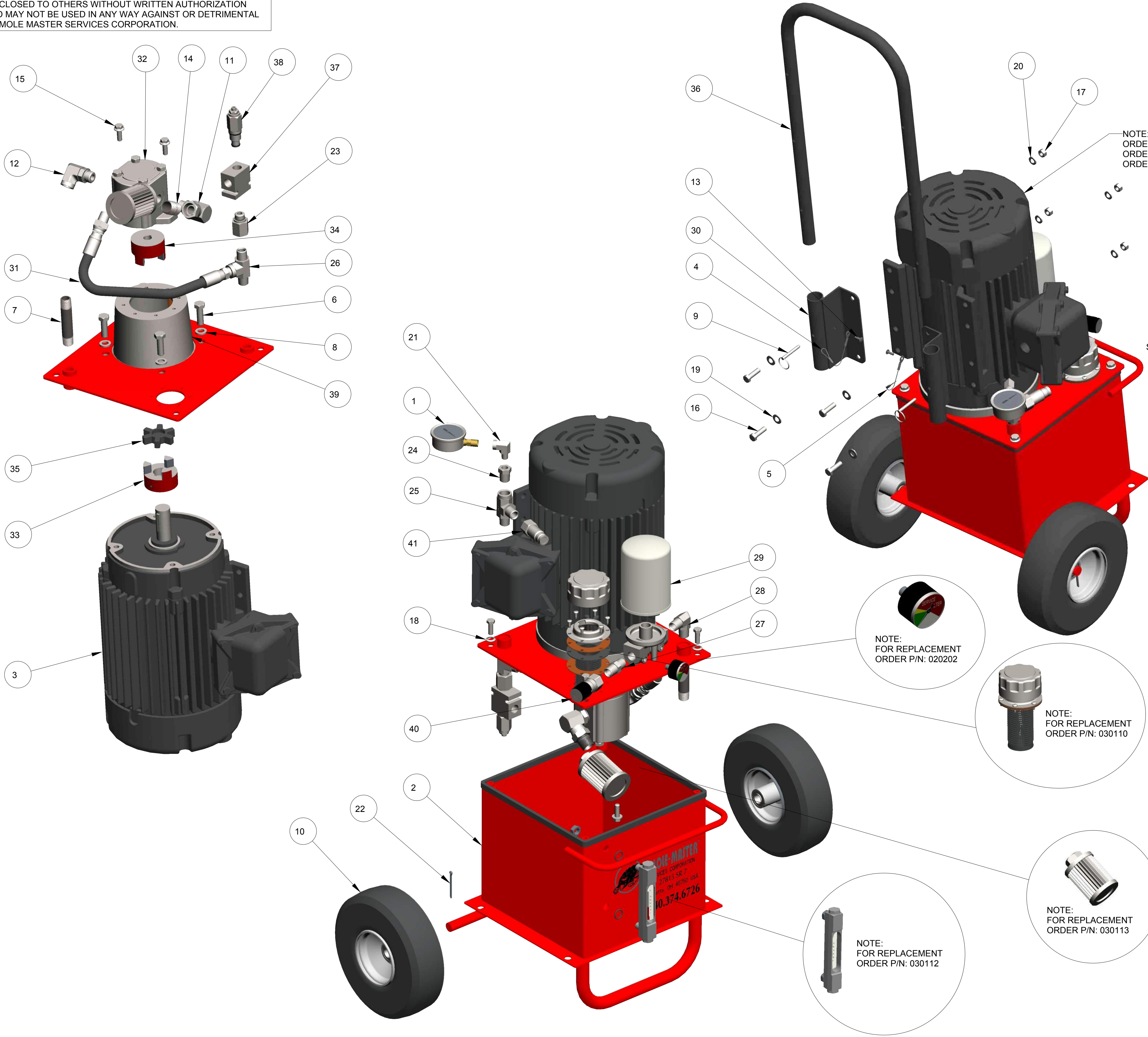
TITLE
HYDRAULIC JUNIOR 360
MODEL NO: JR360H
BOOM ASSEMBLY

SIZE	DWG NO.	REV.
D	PL3360H-8	B

SCALE	CALC. WT	ACT. WT	SHEET	1 OF 1
3/16				


THIS MATERIAL IS THE PROPERTY OF MOLE MASTER SERVICES CORPORATION AND MAY NOT BE REPRODUCED, PUBLISHED, OR DISCLOSED TO OTHERS WITHOUT WRITTEN AUTHORIZATION AND MAY NOT BE USED IN ANY WAY AGAINST OR DETRIMENTAL TO MOLE MASTER SERVICES CORPORATION.

REVISION HISTORY			
REV	DESCRIPTION	DATE	BY
A	040102 WAS 010117	05-15-14	EPP
B	050102 WAS 020101, 050105 WAS 020103	05-30-14	EPP
C	REPLACED 030103 & 030104 WITH 030148	03-29-17	EPP



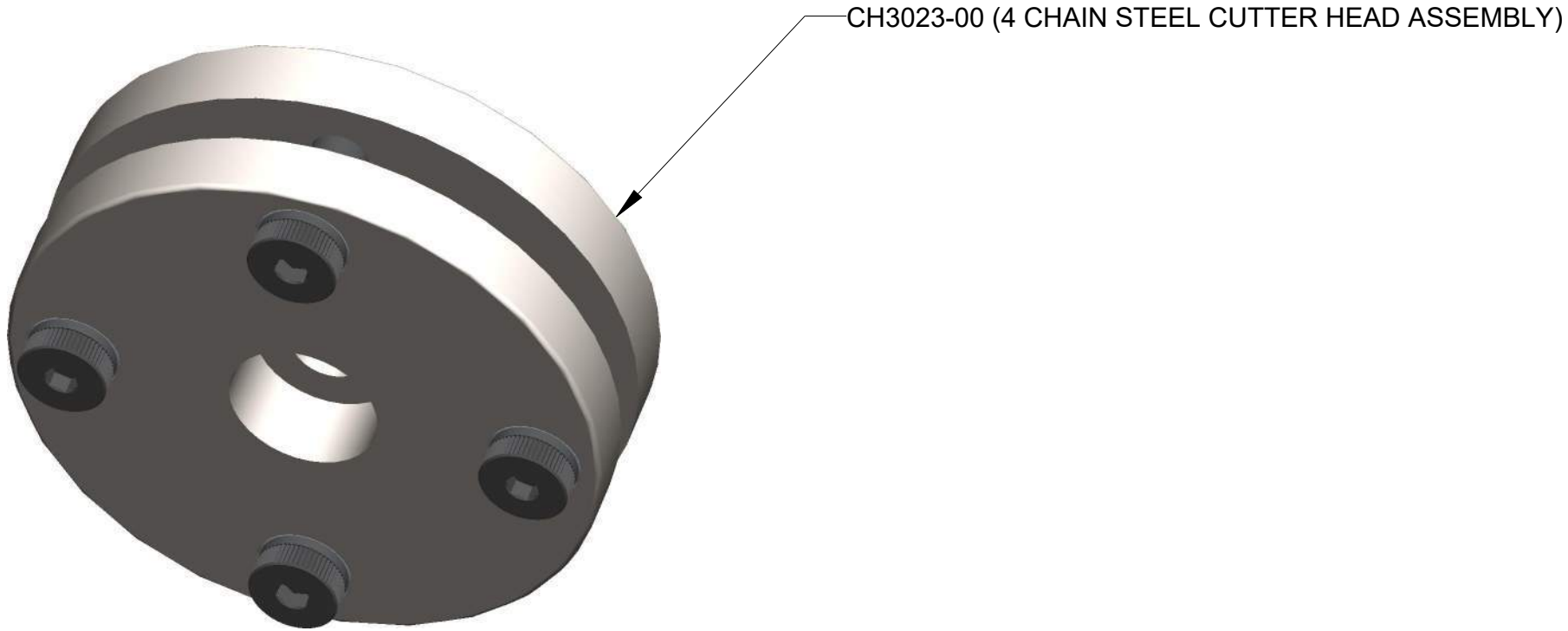
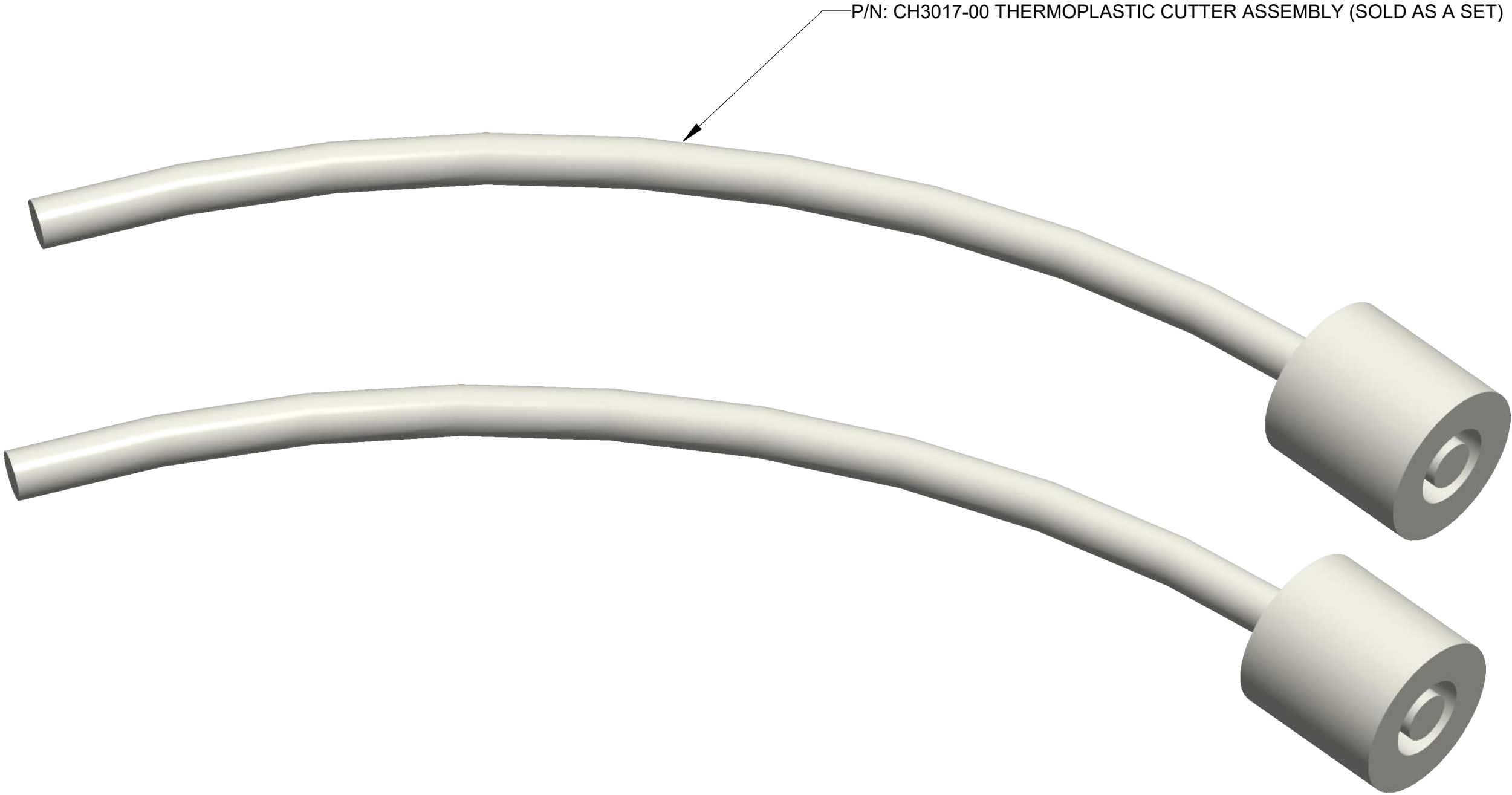
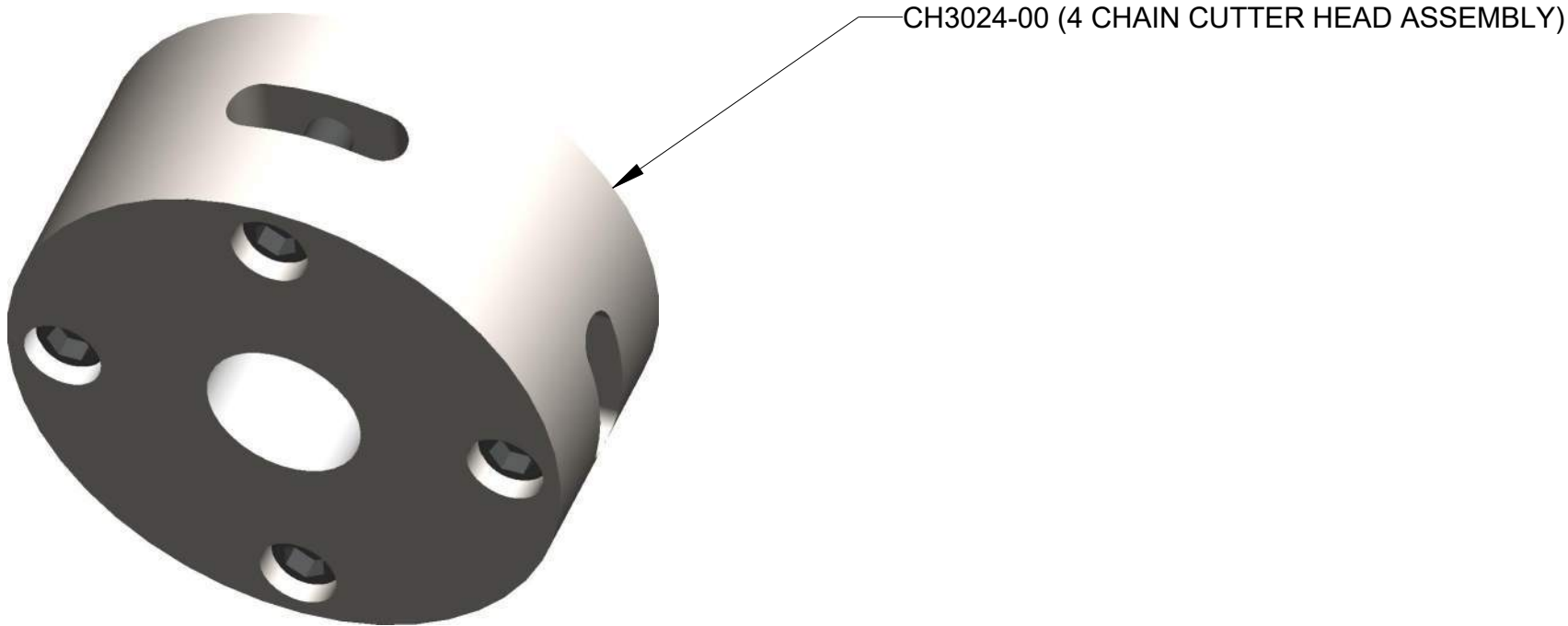
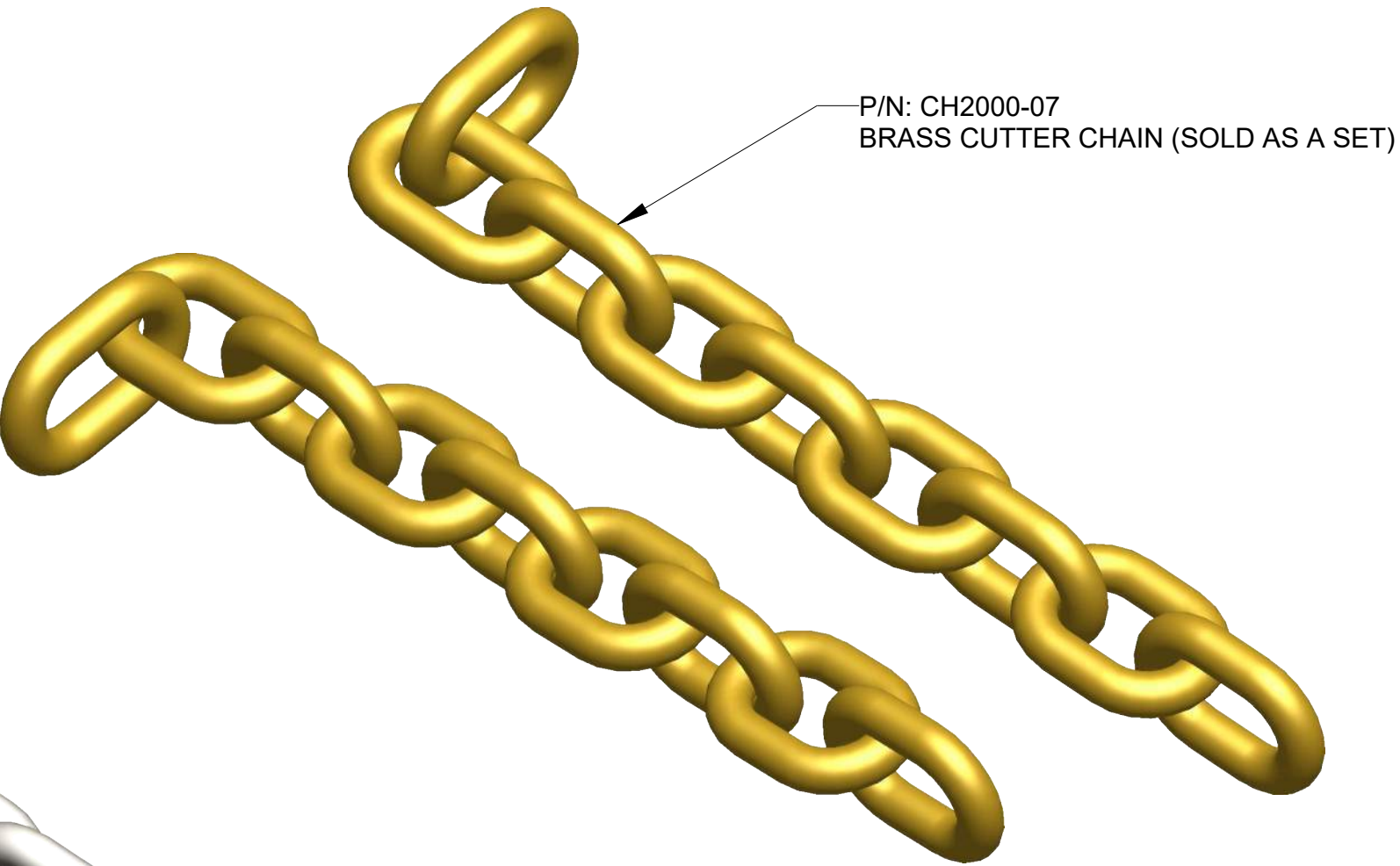
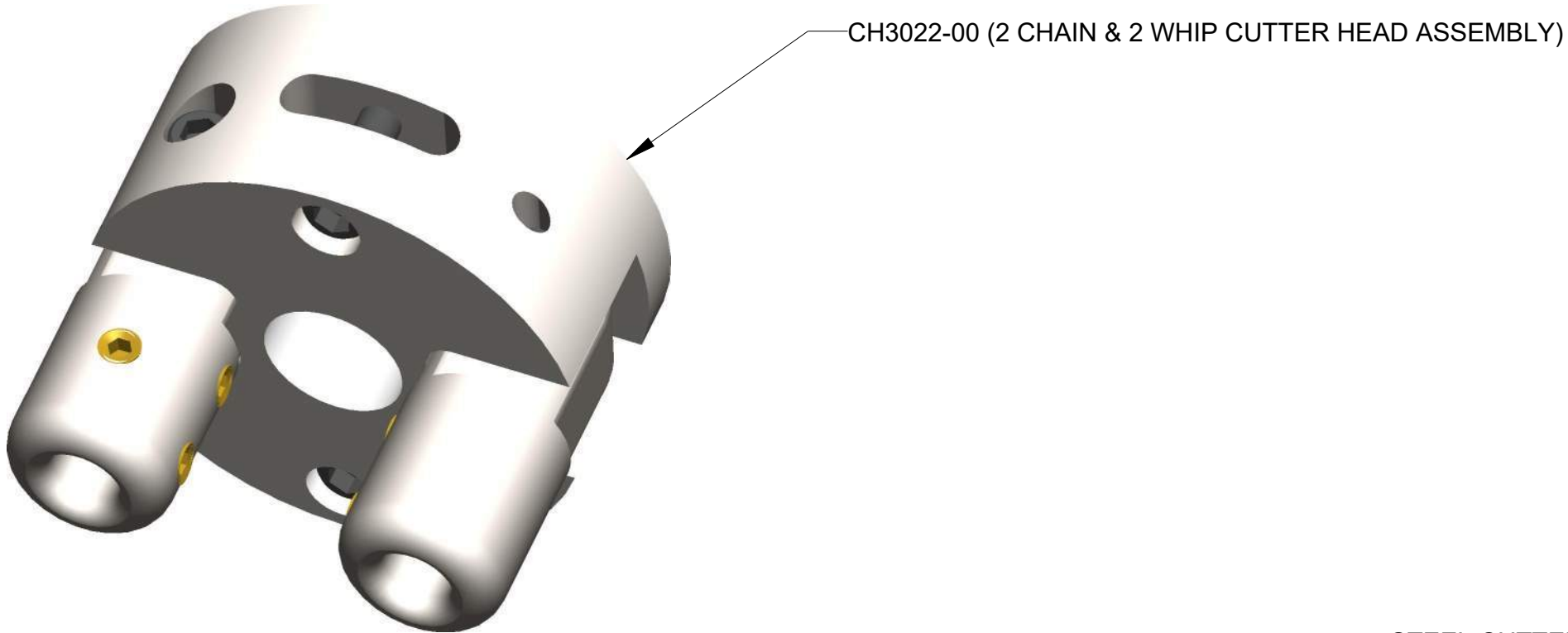
SOLD ONLY AS A SET
ORDER 030127


41	1	030125	QUICK COUPLING, MALE END, 1/2" FEMALE PIPE
40	1	030126	QUICK COUPLING, FEMALE END, 1/2" FEMALE PIPE
39	1	030111	PUMP MOUNT FOR ELECTRIC MOTOR
38	1	030128	PRESSURE RELIEF CARTRIDGE
37	1	030129	PRESSURE RELIEF BODY
36	1	PU3001-01	POWER UNIT HANDLE
35	1	030119	LOVEJOY-SPIDER COUPLING-L099/L100SOX
34	1	030120	LOVEJOY COUPLER-L099X5/8HUB3/16
33	1	030121	LOVEJOY COUPLER-L099X1 1/8HUB1/4
32	1	030130	HYDRAULIC GEAR PUMP
31	1	HH3004-00	HOSE ASSY, #8M3K, (1)8GE-8MPX, (1)8GE-8MP, 18" LGTH
30	2	PU3002-00	HANDLE MOUNTING BRACKET
29	1	030122	FILTER ASSEMBLY, HYDRAULIC OIL
28	1	050105	8MP-8MP90, MALE PIPE-MALE PIPE 90 D ELBOW HYD ADAPTER
27	1	050102	8MP-8MP, MALE PIPE-MALE PIPE HEX NIPPLE
26	1	020105	8MP-8MP-8FP, MALE PIPE-MALE PIPE-FEMALE PIPE TEE HYD ADAPTER
25	1	020106	8MP-8FP-8MP, MALE PIPE-FEMALE PIPE-MALE PIPE TEE HYD ADAPTER
24	1	020102	8MP-4FP, MALE PIPE-FEMALE PIPE HEX REDUCER BUSHING HYD ADAPTER
23	1	020110	8MB-8FP, MALE O RING BOSS-FEMALE PIPE THREAD STR HYD ADAPT
22	2	010153	5/32" x 2", COTTER PIN, ZP
21	1	020104	4MP-4FP90, MALE PIPE-FEMALE 90° STREET ELBOW HYD ADAPTER
20	4	010137	3/8", SPLIT LOCK WASHER, ZP
19	4	010131	3/8", FLAT WASHER, SAE, ZP
18	4	010133	3/8", BONDED SEALING WASHER, 18-8 SS
17	4	010139	3/8-16, HEX NUT, GR. A, ZP
16	4	010118	3/8-16 X 1-1/4", HHCS, GR. 5, ZP
15	2	040102	3/8-16 X 1", FLG BOLT, SERRATTED WASHER, GR 8.2, ZP
14	1	010154	3/4" CLOSE PIPE NIPPLE, SCHD 40, STL
13	2	010113	3/16", BLIND POP-RIVET, BUTTON HEAD, ALUM
12	1	020116	10MB-8FP90, MALE O RING BOSS-FEMALE PIPE 90° ELBOW HYD ADAPTER
11	1	020118	10MB-12FPX90, MALE O RING BOSS-FEMALE PIPE SWIVEL 90° ELBOW HYD ADPT
10	2	030148	10" FLAT FREE WHEEL ASSY, 3" OFFSET
9	2	010157	1/4" X 1-1/2", DETENT RING PIN
8	4	010138	1/2", SPLIT LOCK WASHER, ZP
7	1	010149	1/2" X 4", SEAMLESS PIPE NIPPLE, SCHD 80, 3000#
6	4	010120	1/2-13 X 1-1/2", HHCS, GR. 5, ZP
5	1	010111_3	1/16" X 6", BARE CABLE, STEEL LANYARD
4	1	010111_2	1/16" X 6", BARE CABLE, STEEL LANYARD
3	1	030138	5 HP, 1750 RPM, 3PH, TEFC GENERAL PURPOSE ELECTRIC AC MOTOR
2	1	030114	5 GALLON VERTICAL HYDRAULIC RESERVOIR
1	1	020203	2-1/2"-3000 PSI GLY GAUGE, 1/4" NPT BOTTOM MOUNT
ITEM/QTY	PART NO.	DESCRIPTION	

UNLESS OTHERWISE SPECIFIED DIMENSIONS ARE IN INCHES.		APPROVALS		DATE	MOLE-MASTER™ SERVICES CORPORATION				27815 STATE ROUTE 7 MARIETTA, OHIO 45750 USA 740-374-6726										
		DRAWN	EPP	12-14-12															
TOLERANCES ARE: DECIMALS .01 ± .005 FRACTIONAL ± 1/16		CHECKED		-	-	TITLE		HYDRAULIC JUNIOR 360 MODEL NO: JR360H POWER UNIT ASSEMBLY											
DO NOT SCALE DRAWING		ENGR		-	-	SIZE		DWG NO.		PL3360H-9			REV.		C				
TREATMENT		-		-		D													
FINISH		-		-		SCALE		1/4				CALC WT		ACT WT		SHEET		1 OF 1	
MATERIAL		SEE BOM		-															

THIS MATERIAL IS THE PROPERTY OF MOLE MASTER SERVICES CORPORATION AND MAY NOT BE REPRODUCED, PUBLISHED, OR DISCLOSED TO OTHERS WITHOUT WRITTEN AUTHORIZATION AND MAY NOT BE USED IN ANY WAY AGAINST OR DETRIMENTAL TO MOLE MASTER SERVICES CORPORATION.

REVISION HISTORY			
REV	DESCRIPTION	DATE	BY



UNLESS OTHERWISE SPECIFIED DIMENSIONS ARE IN INCHES. TOLERANCES ARE: DECIMALS ANGLES .XX± .01 ±2° .XXX± .005 FRACTIONAL ± 1/16 DO NOT SCALE DRAWING		APPROVALS		DATE	 <div>27815 STATE ROUTE 7 MARIETTA, OHIO 45750 USA 740-374-6726</div>	
		DRAWN	EPP	3-14-13		
		CHECKED	-	-		
		TREATMENT	-	ENGR	TITLE	
FINISH	-		HYDRAULIC JUNIOR 360			
MATERIAL	SEE BOM			MODEL NO: JR360H		
				ASSESSORIES		
				PL3360H-10		
SIZE			DWG NO.		REV.	
D			PL3360H-10		-	
SCALE		1/2		CALC. WT	ACT. WT	
				SHEET	1 OF 1	