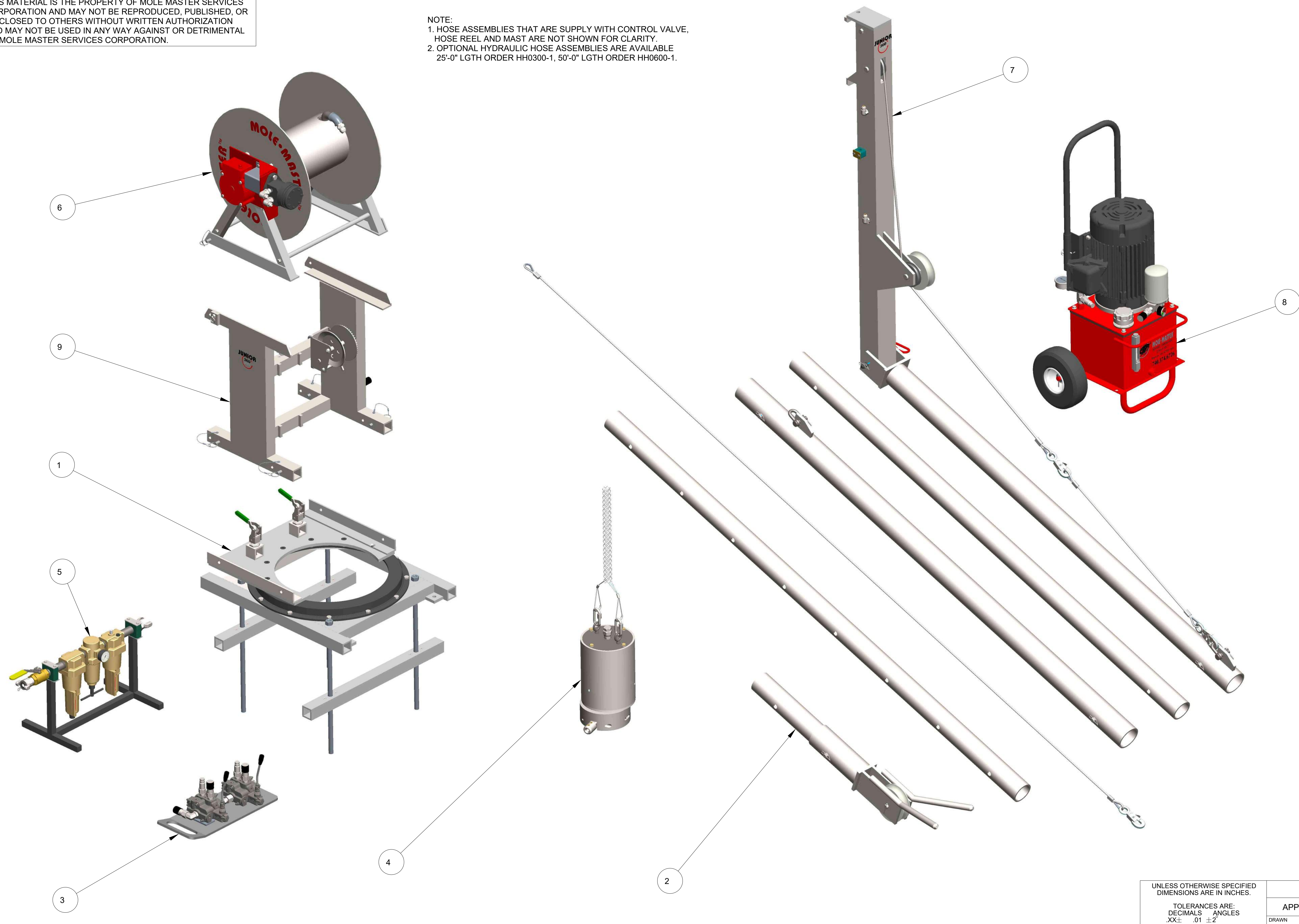


THIS MATERIAL IS THE PROPERTY OF MOLE MASTER SERVICES CORPORATION AND MAY NOT BE REPRODUCED, PUBLISHED, OR DISCLOSED TO OTHERS WITHOUT WRITTEN AUTHORIZATION AND MAY NOT BE USED IN ANY WAY AGAINST OR DETRIMENTAL TO MOLE MASTER SERVICES CORPORATION.

NOTE:
 1. HOSE ASSEMBLIES THAT ARE SUPPLY WITH CONTROL VALVE, HOSE REEL AND MAST ARE NOT SHOWN FOR CLARITY.
 2. OPTIONAL HYDRAULIC HOSE ASSEMBLIES ARE AVAILABLE 25'-0" LGTH ORDER HH0300-1, 50'-0" LGTH ORDER HH0600-1.

REVISION HISTORY			
REV	DESCRIPTION	DATE	BY
A	RVSD CONTROL VALVE PART NUMBER	01-08-20	EPP



ITEM	QTY	PART NO.	DESCRIPTION
9	1	SF3001-00	UPPER SUPPORT FRAME
8	1	PU3100-00	POWER UNIT ASSEMBLY
7	1	M3100-00	MAST ASSEMBLY
6	1	HR3100-00	HOSE REEL ASSEMBLY
5	1	FRL3000-00	FILTER-REGULATOR-LUBRICATOR ASSEMBLY
4	1	CH2000-00	CUTTING HEAD ASSEMBLY
3	1	CV3300-00	CONTROL VALVE ASSEMBLY
2	1	JB3100-00	BOOM ASSEMBLY
1	1	BF3000-00	BEARING FRAME ASSEMBLY

UNLESS OTHERWISE SPECIFIED DIMENSIONS ARE IN INCHES.

TOLERANCES ARE:
 DECIMALS ANGLES
 .XX± .01 ±2°
 .XXX± .005
 FRACTIONAL ± 1/16

DO NOT SCALE DRAWING

APPROVALS	DATE
DRAWN	EPP 01-17-13
CHECKED	-
ENGR	-

27815 STATE ROUTE 7
 MARIETTA, OHIO
 45750 USA
 740-374-6726

MOLE-MASTER SERVICES CORPORATION

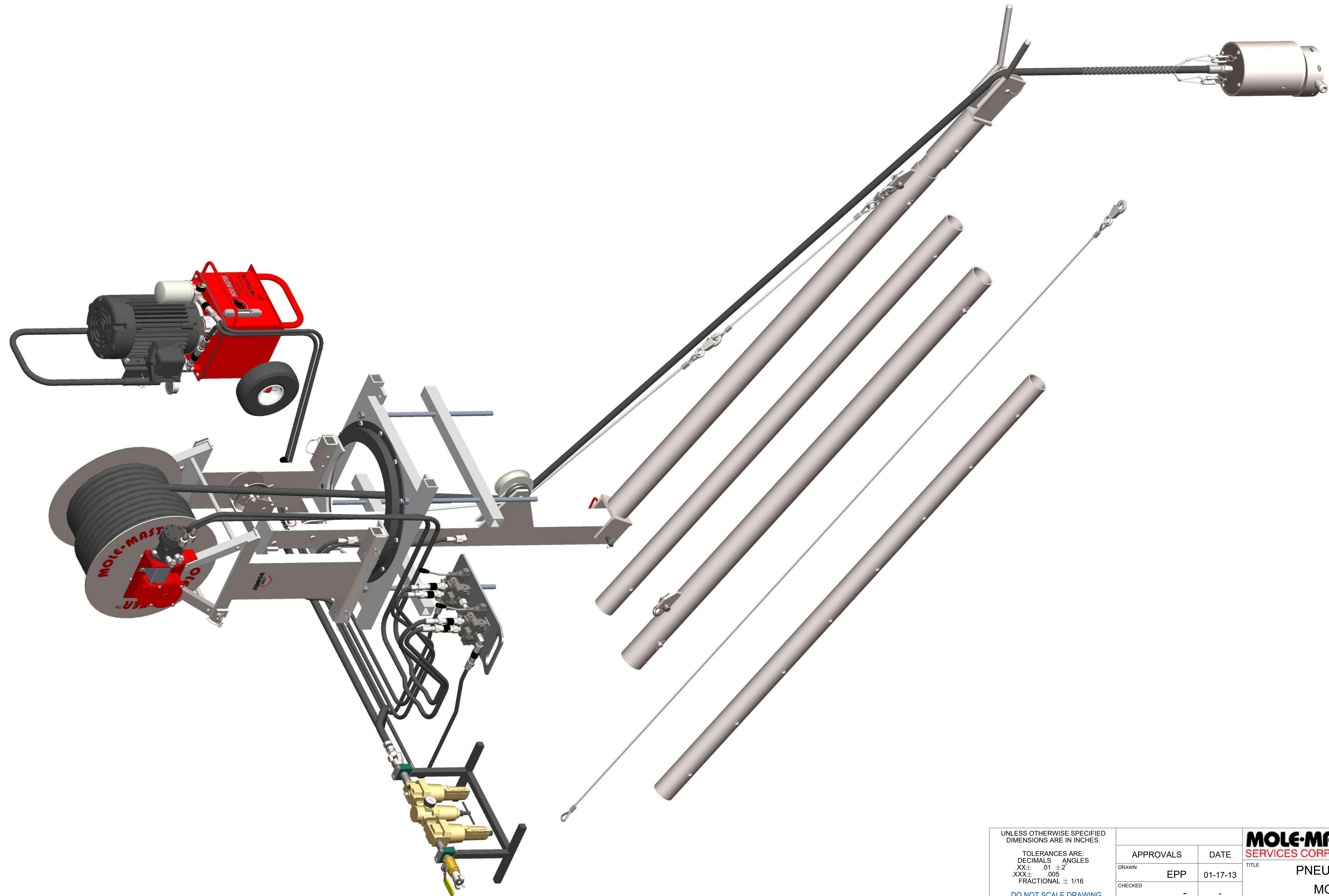
TITLE: PNEUMATIC JUNIOR 360
 MODEL NO: JR360P
 MASTER PARTS LIST


SIZE: D DWG NO. PL3360P-1 REV. A

SCALE: 1/8 SHEET: 1 OF 2

THIS MATERIAL IS THE PROPERTY OF MOLE MASTER SERVICES CORPORATION AND MAY NOT BE REPRODUCED, PUBLISHED, OR DISCLOSED TO OTHERS WITHOUT WRITTEN AUTHORIZATION AND MAY NOT BE USED IN ANY WAY AGAINST OR DETRIMENTAL TO MOLE MASTER SERVICES CORPORATION.

REVISION HISTORY			
REV	DESCRIPTION	DATE	BY



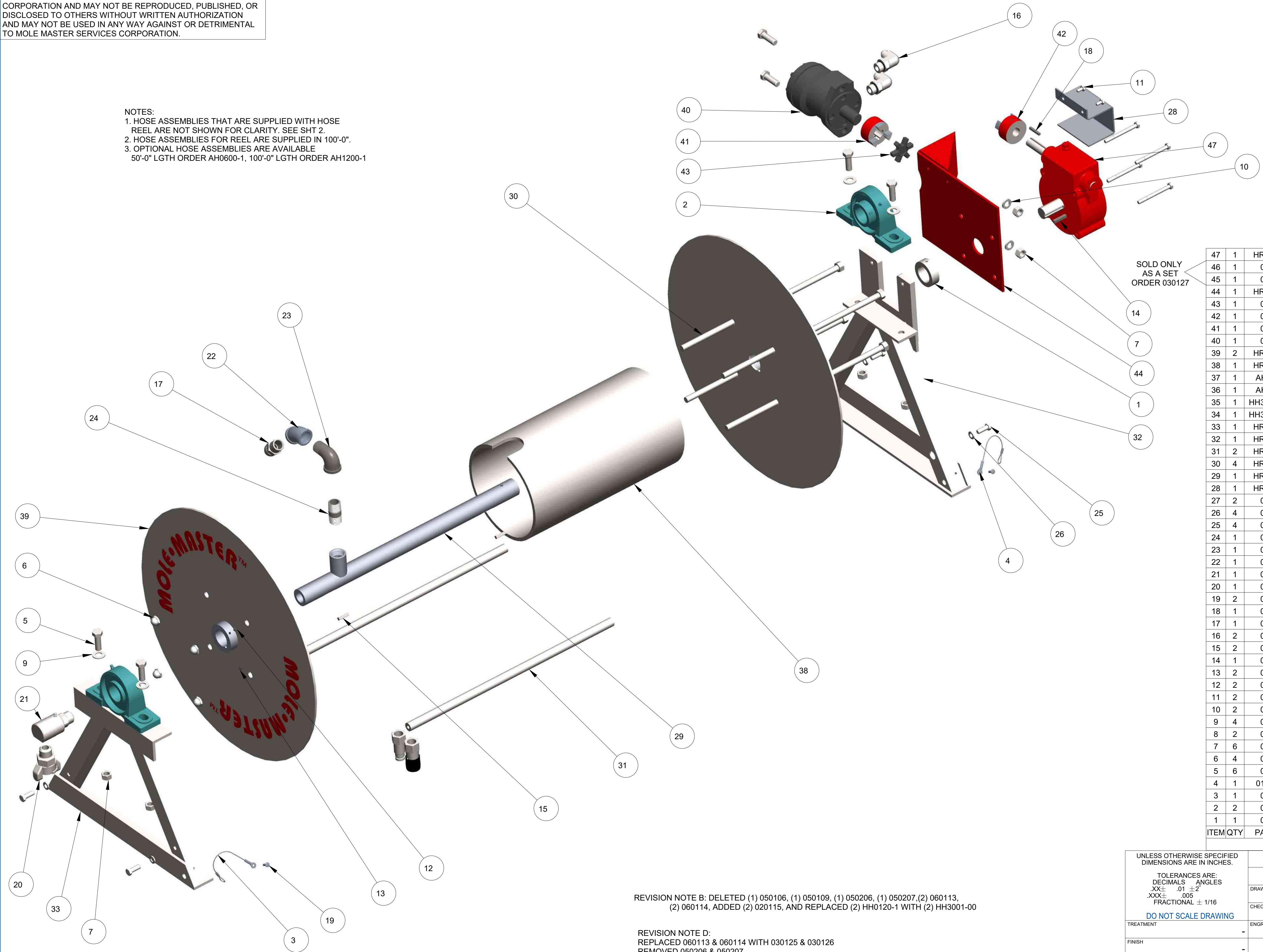
UNLESS OTHERWISE SPECIFIED DIMENSIONS ARE IN INCHES.		APPROVALS		DATE			27815 STATE ROUTE 7 MARIETTA, OHIO 45750 USA 740-374-6726	
TOLERANCES ARE: DECIMALS .01 ± 2' .XX ± .01 .XXX ± .005 FRACTIONAL ± 1/16		DRAWN	EPP	01-17-13	TITLE		PNEUMATIC JUNIOR 360	
DO NOT SCALE DRAWING		CHECKED	-	-	MODEL NO:		JR360P	
TREATMENT	-	ENGR	-	-	MASTER PARTS LIST			
FINISH	-			SIZE	DWG NO.	REV.		
MATERIAL	SEE BOM			D	PL3360P-1	A		
		SCALE	1/8	CALC WT	ACT WT	SHEET	2 OF 2	

THIS MATERIAL IS THE PROPERTY OF MOLE MASTER SERVICES CORPORATION AND MAY NOT BE REPRODUCED, PUBLISHED, OR DISCLOSED TO OTHERS WITHOUT WRITTEN AUTHORIZATION AND MAY NOT BE USED IN ANY WAY AGAINST OR DETRIMENTAL TO MOLE MASTER SERVICES CORPORATION.

REVISION HISTORY			
REV	DESCRIPTION	DATE	BY
A	AH1200-1 WAS AH1200-00	05-06-14	EPP
B	SEE REVISION NOTE	08-24-16	EPP
C	ADDED 050206 & 050207 TO BOM	05-01-18	EPP
D	SEE REVISION NOTE	02-25-22	EPP

NOTES:

- HOSE ASSEMBLIES THAT ARE SUPPLIED WITH HOSE REEL ARE NOT SHOWN FOR CLARITY. SEE SHT 2.
- HOSE ASSEMBLIES FOR REEL ARE SUPPLIED IN 100'-0".
- OPTIONAL HOSE ASSEMBLIES ARE AVAILABLE
50'-0" LGTH ORDER AH0600-1, 100'-0" LGTH ORDER AH1200-1



SOLD ONLY AS A SET ORDER 030127

ITEM QTY	PART NO.	DESCRIPTION	
47	1	HR3009-01	TERN GEAR REDUCER
46	1	030125	QUICK COUPLING, MALE END, 1/2" FEMALE PIPE
45	1	030126	QUICK COUPLING, FEMALE END, 1/2" FEMALE PIPE
44	1	HR2003-00	MOTOR MOUNTING BRACKET WELDMENT
43	1	030116	LOVEJOY-SPIDER COUPLING-L090/L095SOX
42	1	030117	LOVEJOY COUPLER-L095X3/4HUB3/16
41	1	030118	LOVEJOY COUPLER-L095X1HUB1/4
40	1	030137	HYDRAULIC MOTOR
39	2	HR2005-00	HOSE REEL END WELDMENT
38	1	HR2004-01	HOSE REEL DRUM
37	1	AH0120-1	HOSE ASSY,(2) AM6,(4) CP7S99, 120" LGTH
36	1	AH1200-1	HOSE ASSY,#12EFG4K,(1) 12EFG-12FJX,(1) 12EFG-12JIC,100'-0" LGTH
35	1	HH3001-00_6	HOSE ASSY, #6M3K, (1) 6G-8FJX, (1) 6G-8MP, 140" LGTH
34	1	HH3001-00_5	HOSE ASSY, #6M3K, (1) 6G-8FJX, (1) 6G-8MP, 140" LGTH
33	1	HR3010-00	FRAME, IDLER SIDE
32	1	HR3001-00	FRAME, DRIVE SIDE
31	2	HR3003-01	FRAME CONNECTING ROD
30	4	HR3008-00	DRUM TIE ROD
29	1	HR3011-00	DRIVE SHAFT WELDMENT
28	1	HR2000-02	COUPLING GUARD
27	2	050200	AIR KING SAFETY CLIP
26	4	010137	3/8", SPLIT LOCK WASHER, ZP
25	4	010117	3/8-16 X 1", HHCS, GR. 5, ZP
24	1	060102	3/4" PIPE NIPPLE X 2" LONG, SCHD 80, STL
23	1	060104	3/4" NPT, MALE PIPE-FEMALE PIPE 90° STREET ELBOW
22	1	060103	3/4" NPT PIPE 45° ELBOW, BLACK IRON STL
21	1	060111	3/4 NPT SUPER SWIVEL, 90° SWIVEL, MALE PIPE-FEMALE PIPE
20	1	050202	3/4 MPT, CHICAGO FITTING/AIR KING UNIVERSAL COUPLING
19	2	010113	3/16", BLIND POP-RIVET, BUTTON HEAD, ALUM
18	1	010108	3/16" SQUARE X 1-1/4" L, MACHINE KEY, STL
17	1	050100	12MJ-12MP, MALE JIC-MALE PIPE THREAD STRAIGHT HYD ADAPTER
16	2	020115	10MB-8MJ90, MALE O RING BOSS-MALE JIC 90° EL HYD ADPT
15	2	010109	1/4" SQUARE X 1" L, MACHINE KEY, STL
14	1	010110	1/4" SQUARE X 1-1/4" L, MACHINE KEY, STL
13	2	010126	1/4-20 X 1/4", SCKT. SET SCR, CUP PT, BLK. OXIDE
12	2	010127	1/4-20 X 1/2", SCKT. SET SCR, CUP PT, BLK. OXIDE
11	2	010114	1/4-20 X 1/2", HHCS, GR. 5, ZP
10	2	010138	1/2", SPLIT LOCK WASHER, ZP
9	4	010132	1/2", FLAT WASHER, SAE, ZP
8	2	010158	1/2" X 2-1/2", DETENT RING PIN
7	6	010140	1/2-13, HEX NUT, GR. A, ZP
6	4	010143	1/2-13, ACORN NUT, NICKEL PLT
5	6	010120	1/2-13 X 1-1/2", HHCS, GR. 5, ZP
4	1	010111_1	1/16" X 6", BARE CABLE, STEEL LANYARD
3	1	010111	1/16" X 6", BARE CABLE, STEEL LANYARD
2	2	030123	1-1/2", PILLOW BLOCK BEARING
1	1	010134	1-1/2" ID X 3/4" W, CLAMPING COLLAR, ZP

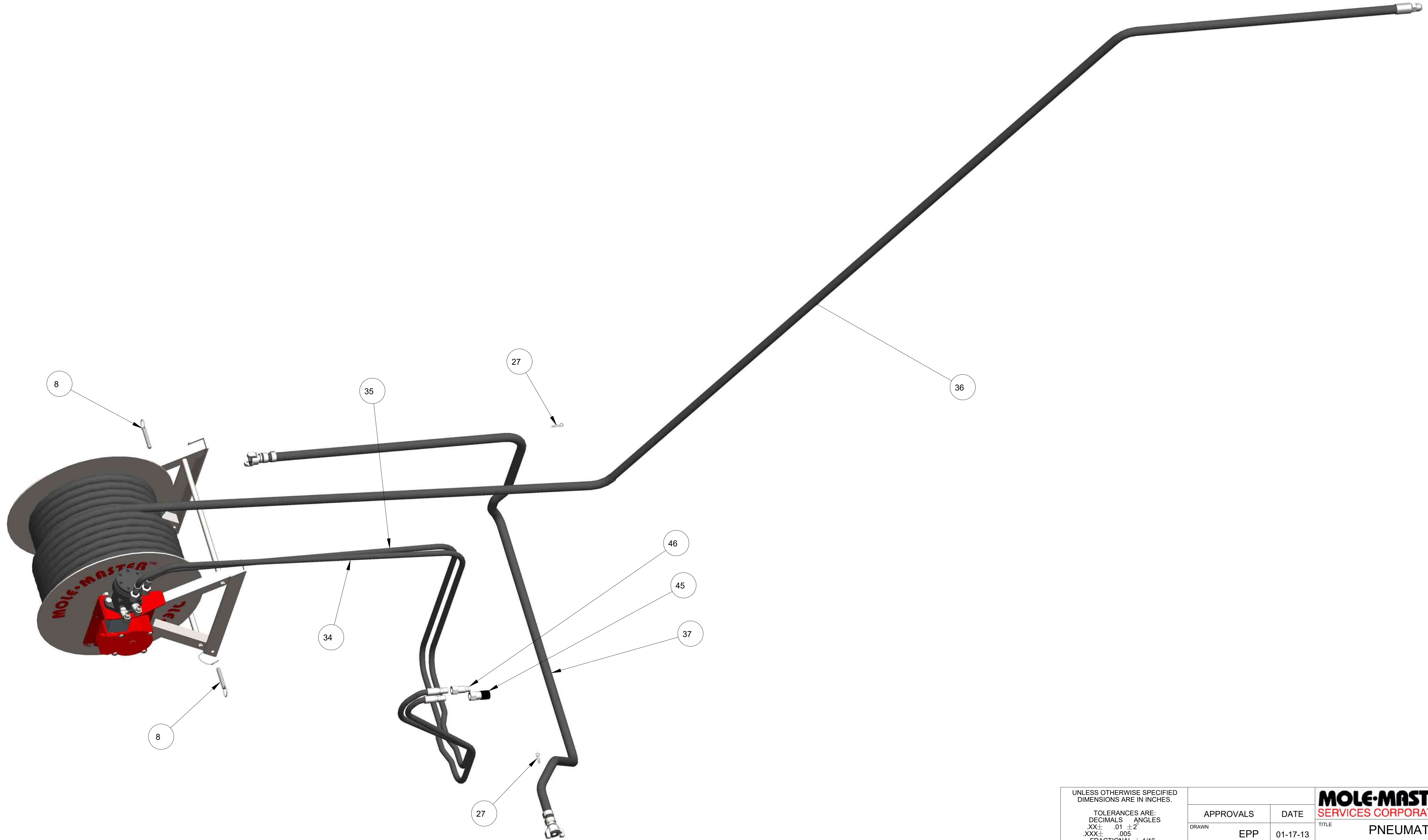
REVISION NOTE B: DELETED (1) 050106, (1) 050109, (1) 050206, (1) 050207,(2) 060113, (2) 060114, ADDED (2) 020115, AND REPLACED (2) HH0120-1 WITH (2) HH3001-00


REVISION NOTE D:
REPLACED 060113 & 060114 WITH 030125 & 030126
REMOVED 050206 & 050207

UNLESS OTHERWISE SPECIFIED DIMENSIONS ARE IN INCHES.		APPROVALS		DATE	<p>27815 STATE ROUTE 7 MARIETTA, OHIO 45750 USA 740-374-6726</p>
TOLERANCES ARE: DECIMALS .01 ± .002 XX± .01 ± .005 XXX± .005 FRACTIONAL ± 1/16		DRAWN	EPP	01-17-13	
DO NOT SCALE DRAWING		CHECKED	-	-	
TREATMENT		ENGR	-	-	
FINISH		-		-	<p>TITLE PNEUMATIC JUNIOR 360 MODEL NO: JR360P HOSE REEL ASSEMBLY</p>
MATERIAL		SEE BOM		-	
SCALE		1/4		SIZE	D
DWG NO.		PL3360P-2		REV.	D
SHEET		1 OF 2			

THIS MATERIAL IS THE PROPERTY OF MOLE MASTER SERVICES CORPORATION AND MAY NOT BE REPRODUCED, PUBLISHED, OR DISCLOSED TO OTHERS WITHOUT WRITTEN AUTHORIZATION AND MAY NOT BE USED IN ANY WAY AGAINST OR DETRIMENTAL TO MOLE MASTER SERVICES CORPORATION.

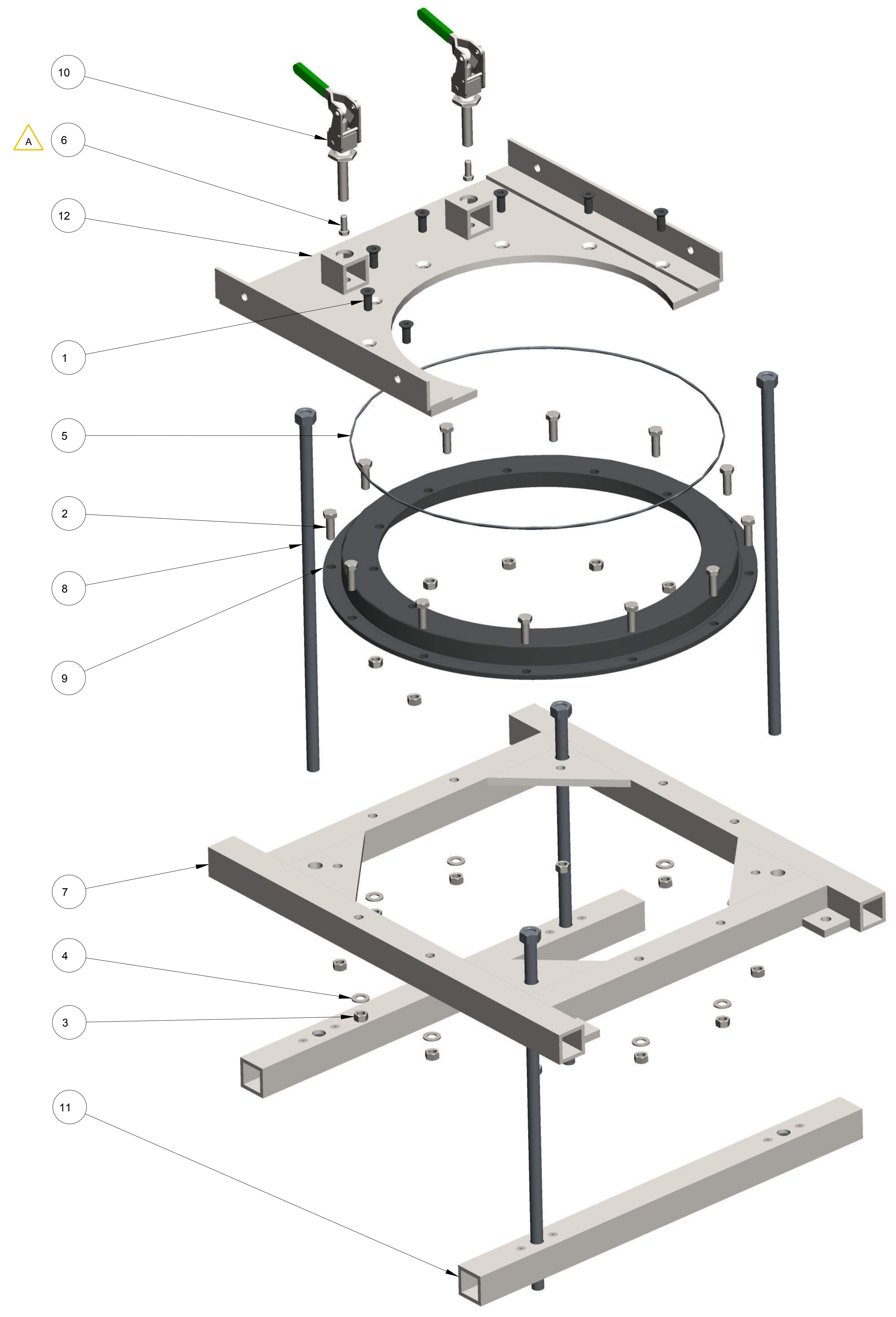
REVISION HISTORY			
REV	DESCRIPTION	DATE	BY
A	AH1200-1 WAS AH1200-00	05-06-14	EPP
B	SEE REVISION NOTE ON SHEET 1	08-24-16	EPP
C	ADDED 050206 & 050207 TO BOM	05-01-18	EPP



UNLESS OTHERWISE SPECIFIED DIMENSIONS ARE IN INCHES.		APPROVALS		DATE		27815 STATE ROUTE 7 MARIETTA, OHIO 45750 USA 740-374-6726		
TOLERANCES ARE: DECIMALS .01 ± 2" .XX ± .005 FRACTIONAL ± 1/16 DO NOT SCALE DRAWING		DRAWN	EPP	01-17-13		TITLE	PNEUMATIC JUNIOR 360 MODEL NO: JR360P HOSE REEL ASSEMBLY	
TREATMENT	-	CHECKED	-	-	SIZE	D	REV.	D
FINISH	-	ENGR	-	-	DWG NO.	PL3360P-2		
MATERIAL	-	SCALE	3/20	CALC WT	ACT WT	SHEET	2 OF 2	

THIS MATERIAL IS THE PROPERTY OF MOLE MASTER SERVICES CORPORATION AND MAY NOT BE REPRODUCED, PUBLISHED, OR DISCLOSED TO OTHERS WITHOUT WRITTEN AUTHORIZATION AND MAY NOT BE USED IN ANY WAY AGAINST OR DETRIMENTAL TO MOLE MASTER SERVICES CORPORATION.

REVISION HISTORY			
REV	DESCRIPTION	DATE	BY
A	ADDED (2) 010117 TO BOM	03-12-14	EPP



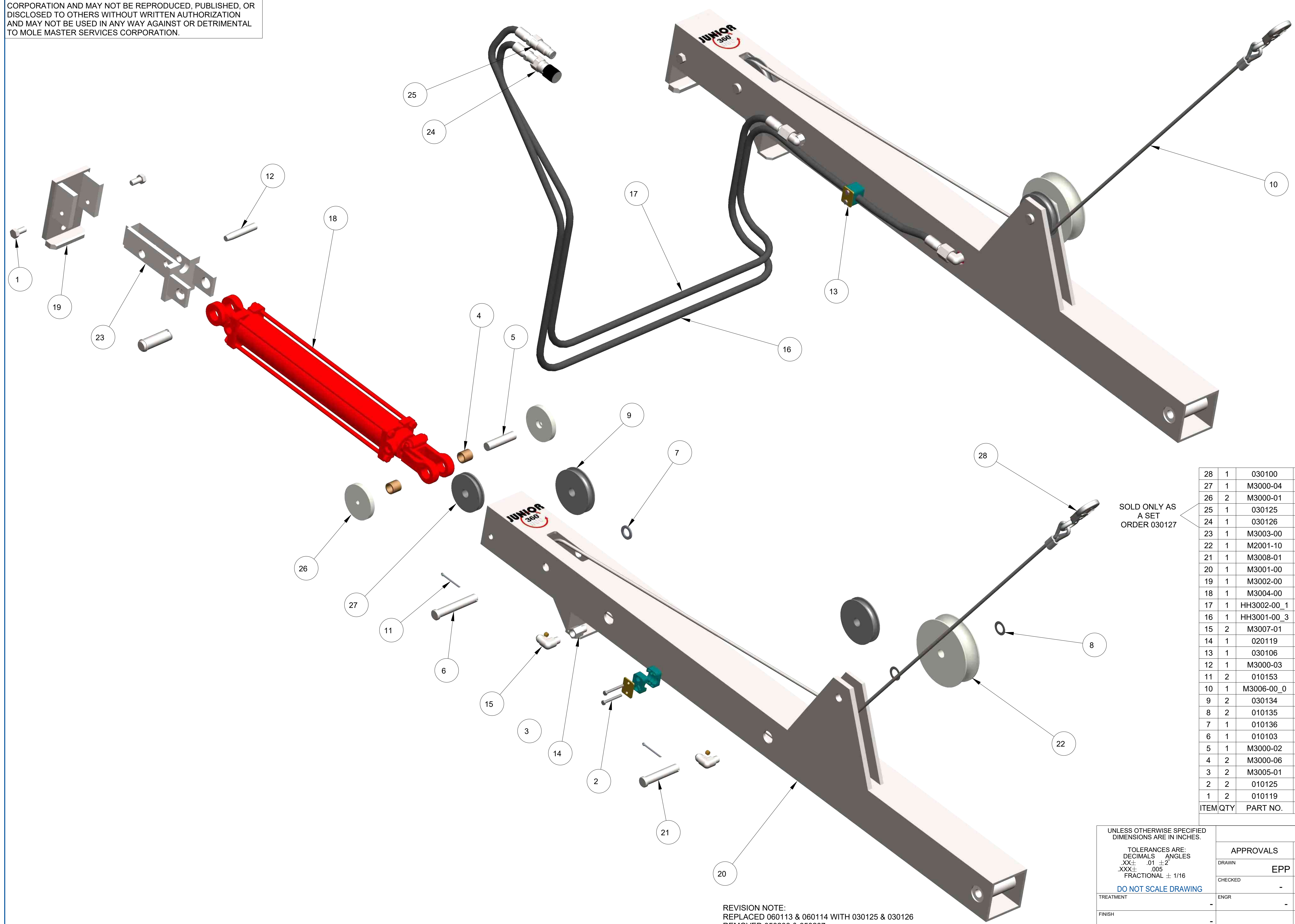
ITEM	QTY	PART NO.	DESCRIPTION
12	1	BF3001-00	UPPER SUPPORT
11	2	BF2003-00	UNDER ROOF LOCKING BAR ASSY
10	2	030107	PLUNGER TOGGLE CLAMP
9	1	4001	MAIN ROTATION BEARING
8	4	BF2004-00	LOCKING BAR ATTACHMENT BOLT
7	1	BF2002-00	BEARING SUPPORT
6	2	010117	3/8-16 X 1", HHCS, GR. 5, ZP
5	1	020205	22" ID X .210" CS BUNA O-RING, VULCANIZE
4	8	010132	1/2", FLAT WASHER, SAE, ZP
3	19	010140	1/2-13, HEX NUT, GR. A, ZP
2	12	010120	1/2-13 X 1-1/2", HHCS, GR. 5, ZP
1	7	010124	1/2-13 X 1-1/2", FHSCS, BLK. OXIDE

A

UNLESS OTHERWISE SPECIFIED DIMENSIONS ARE IN INCHES.		APPROVALS		DATE			27815 STATE ROUTE 7 MARIETTA, OHIO 45750 USA 740-374-6726	
TOLERANCES ARE: DECIMALS .01 ± 2" .XX ± .005 FRACTIONAL ± 1/16		EPP		01-17-13	TITLE		PNEUMATIC JUNIOR 360	
DO NOT SCALE DRAWING		CHECKED		-	MODEL NO:		JR360P	
TREATMENT		ENGR		-	BEARING FRAME ASSEMBLY		DWG NO.	
FINISH		SCALE		1/4	PL3360P-3		REV.	
MATERIAL		SHEET		1 OF 1	SEE BOM		A	

THIS MATERIAL IS THE PROPERTY OF MOLE MASTER SERVICES CORPORATION AND MAY NOT BE REPRODUCED, PUBLISHED, OR DISCLOSED TO OTHERS WITHOUT WRITTEN AUTHORIZATION AND MAY NOT BE USED IN ANY WAY AGAINST OR DETRIMENTAL TO MOLE MASTER SERVICES CORPORATION.


REVISION HISTORY			
REV	DESCRIPTION	DATE	BY
A	M3007-01 WAS 020100	03-05-14	EPP
B	CREATED M3006-00, CABLE ASSEMBLY	11-30-15	EPP
C	ADDED 020119 TO BOM	12-09-16	EPP
D	ADDED 050206 & 050207 TO BOM	05-01-18	EPP
E	MOVED 010148 FROM JB3100-00	07-22-19	EPP
F	RVSD DESCRIPTION OF M3000-04	01-08-20	EPP
G	030100 WAS 010148	04-13-20	EPP
H	SEE REVISION NOTE	02-25-22	EPP



ITEM	QTY	PART NO.	DESCRIPTION
28	1	030100	SNAP HOOK WITH DOUBLE SAFETY LATCH
27	1	M3000-04	SHEAVE, 3-1/2"OD, 3/8" ROPE, 3/4" BUSHING
26	2	M3000-01	ROLLER
25	1	030125	QUICK COUPLING, MALE END, 1/2" FEMALE PIPE
24	1	030126	QUICK COUPLING, FEMALE END, 1/2" FEMALE PIPE
23	1	M3003-00	PULLEY/CYLINDER MOUNT
22	1	M2001-10	PULLEY, SINGLE SPOOL
21	1	M3008-01	MODIFIED CLEVIS PIN, 3/4" X 3-3/4" LG
20	1	M3001-00	MAST TUBE
19	1	M3002-00	MAST TOP CAP WELDMENT
18	1	M3004-00	HYDRAULIC TIE-ROD CYLINDER
17	1	HH3002-00_1	HOSE ASSY, #6M3K, (1) 6G-8FJX, (1) 6G-8MP, 160" CUT LGTH
16	1	HH3001-00_3	HOSE ASSY, #6M3K, (1) 6G-8FJX, (1) 6G-8MP, 140" LGTH
15	2	M3007-01	8MJ-6MP90, MODIFIED MALE JIC-MALE PIPE 90° ELBOW
14	1	020119	6MP-6FPL, MAPLE PIPE-FEMALE PIPE LONG HYD ADAPTER
13	1	030106	5/8" TUBE CLAMP
12	1	M3000-03	5/8" OD TAPERED DOWEL PIN
11	2	010153	5/32" x 2", COTTER PIN, ZP
10	1	M3006-00_0	5/16" GALV AIRCRAFT CABLE ASSEMBLY, 165" LG
9	2	030134	4" OD, 1/2" ROPE SHEEVE WITH 3/4" BUSHING
8	2	010135	3/4", MACHINERY BUSHING, 18 GA., PLN FIN
7	1	010136	3/4", MACHINERY BUSHING, 10 GA., PLN FIN
6	1	010103	3/4" X 4-1/2", CLEVIS PIN, ZP
5	1	M3000-02	3/4" x 3-1/8" STEEL DOWEL PIN, ZP
4	2	M3000-06	3/4" ID x 1" OD x 15/16" LG, BUSHING, BRONZE
3	2	M3005-01	1/8" NPT BRASS SOCKET HEAD PIPE PLUG W/ ORIFICE
2	2	010125	1/4-20 X 2", HHCS, GR. 5, ZP
1	2	010119	1/2-13 X 1", HHCS, GR. 5, ZP

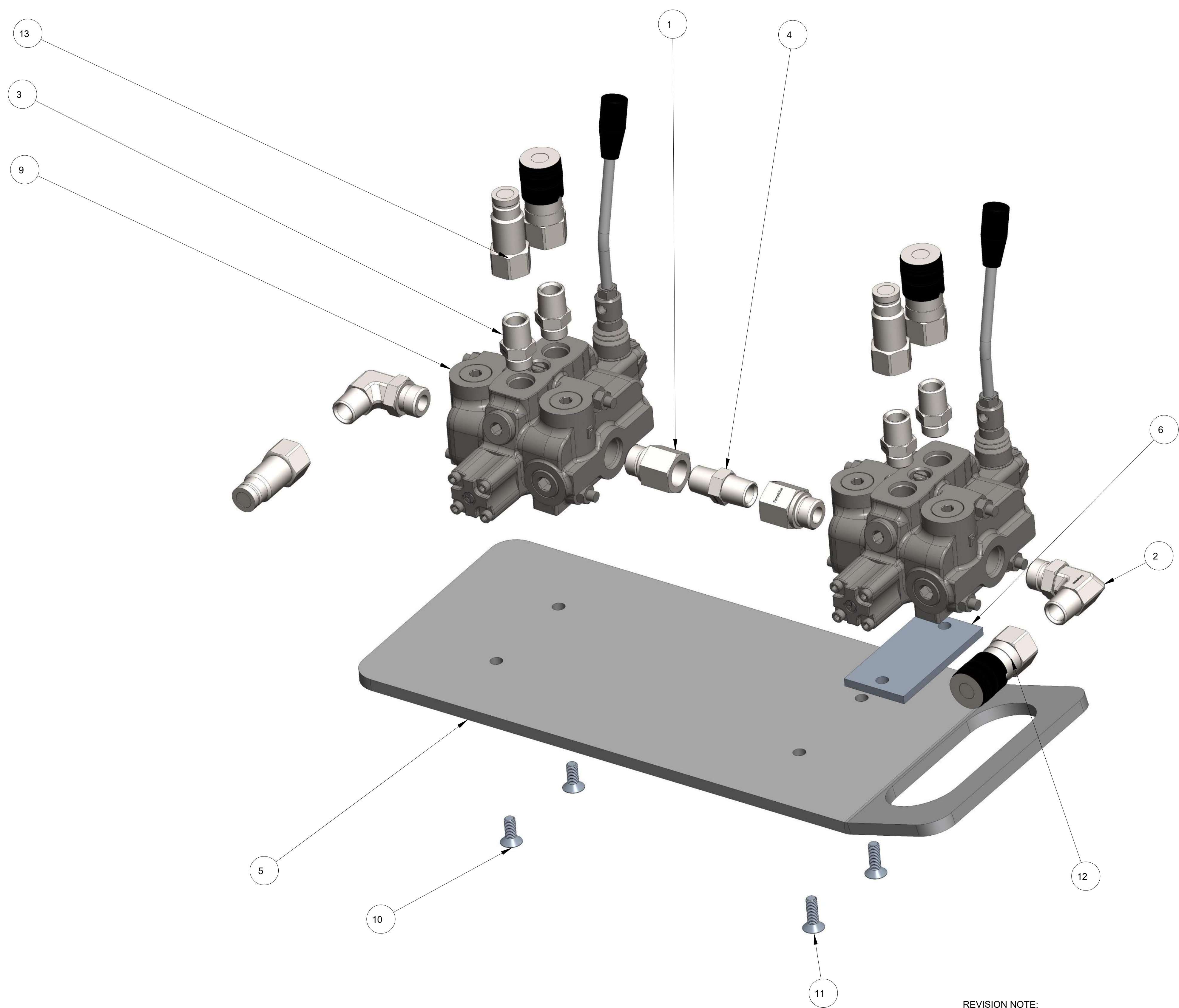
SOLD ONLY AS A SET ORDER 030127

REVISION NOTE:
REPLACED 060113 & 060114 WITH 030125 & 030126
REMOVED 050206 & 050207

UNLESS OTHERWISE SPECIFIED DIMENSIONS ARE IN INCHES.		APPROVALS		DATE		27815 STATE ROUTE 7 MARIETTA, OHIO 45750 USA 740-374-6726
TOLERANCES ARE: DECIMALS .01 ± .002 ANGLES .XX ± .05 FRACTIONAL ± 1/16		DRAWN	EPP	01-17-13		
DO NOT SCALE DRAWING		CHECKED	-	-	TITLE	
TREATMENT		ENGR	-	-	PNEUMATIC JUNIOR 360	
FINISH					MODEL NO: JR360P	
MATERIAL		SEE BOM			MAST ASSEMBLY	
		SIZE		DWG NO.	REV.	
		D		PL3360P-4	H	
		SCALE		1/4	SHEET	1 OF 1

THIS MATERIAL IS THE PROPERTY OF MOLE MASTER SERVICES CORPORATION AND MAY NOT BE REPRODUCED, PUBLISHED, OR DISCLOSED TO OTHERS WITHOUT WRITTEN AUTHORIZATION AND MAY NOT BE USED IN ANY WAY AGAINST OR DETRIMENTAL TO MOLE MASTER SERVICES CORPORATION.

REVISION HISTORY			
REV	DESCRIPTION	DATE	BY
A	RVSD VALVE FROM PARKER TO YOULI	01-08-20	EPP
B	SEE REVISION NOTE	02-25-22	EPP



NOTE:
 1. HYDRAULIC HOSE ASSEMBLIES ARE NOT SHOWN FOR CLARITY.
 2. QUICK COUPLINGS THAT CONNECT TO HYDRAULIC HOSES ARE NOT SHOWN FOR CLARITY.

SOLD ONLY AS A SET
 ORDER 030127

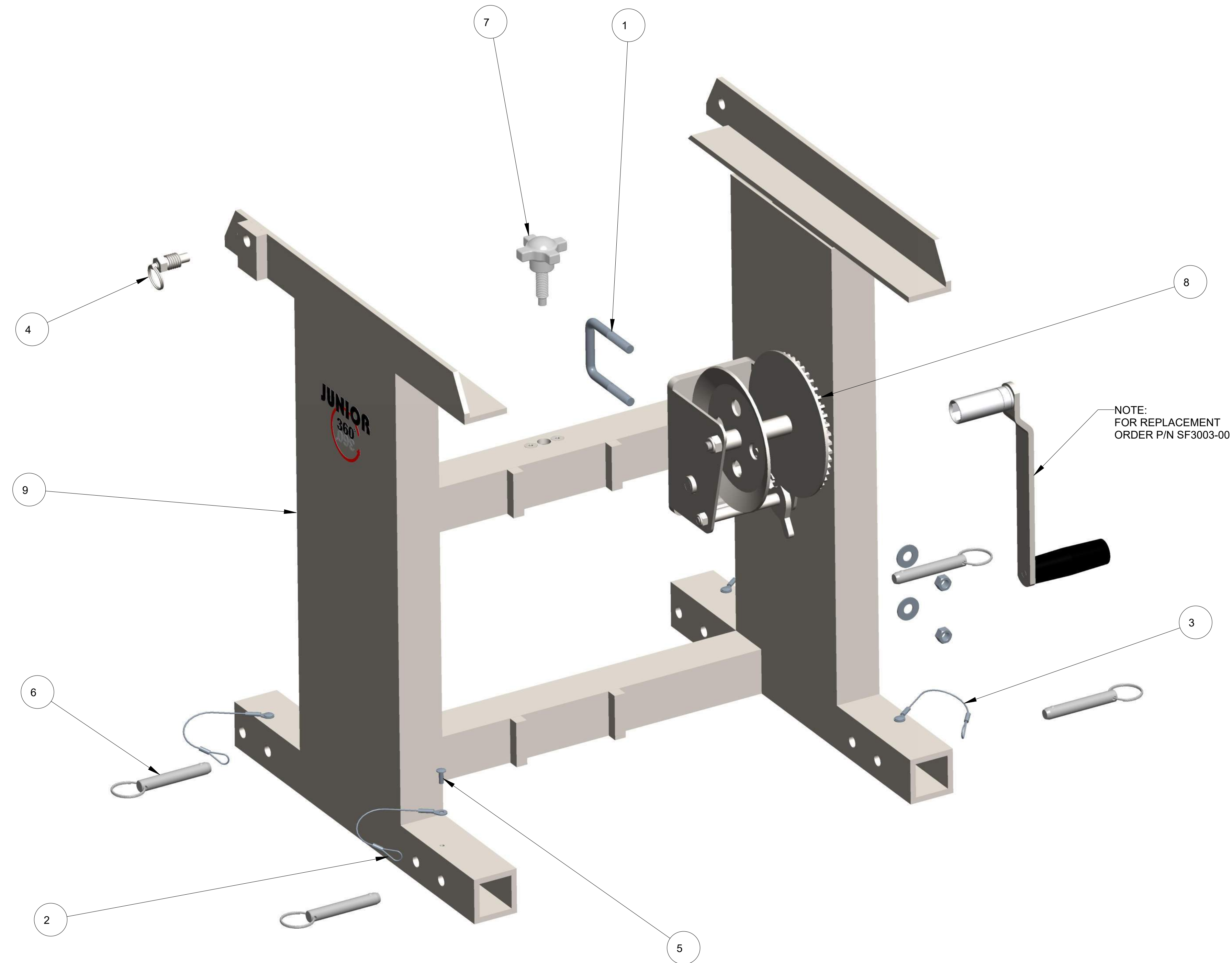
ITEM	QTY	PART NO.	DESCRIPTION
13	5	030125	QUICK COUPLING, MALE END, 1/2" FEMALE PIPE
12	5	030126	QUICK COUPLING, FEMALE END, 1/2" FEMALE PIPE
11	2	040107	M8 X 1.25 X 25mm, FHSCS, ZP
10	2	010160	M8 X 1.25 X 20mm FHMS, ZP
9	2	060119	HYD CONTROL VLV, YOULI 1 SPOOL
8	1	HH0120-1_3	HOSE ASSY, #8M3K, (2) 8GE-8MP, 120" LGTH
7	1	HH0120-1_2	HOSE ASSY, #8M3K, (2) 8GE-8MP, 120" LGTH
6	1	CV3300-02	CONTROL VALVE SPACER PLATE
5	1	CV3300-01	CONTROL VALVE MOUNTING PLATE
4	1	050102	8MP-8MP, MALE PIPE-MALE PIPE HEX NIPPLE
3	4	020109	8MB-8MP, MALE O RING BOSS-MALE PIPE THREAD HYD ADAPTER
2	2	050109	10MB-8MP90, MALE O RING BOSS-MALE PIPE 90 D ELBOW HYD ADAPT
1	2	050106	10MB-8FP, MALE O RING BOSS-FEMALE PIPE STRAIGHT HYD ADAPTER

REVISION NOTE:
 REPLACED 060113 & 060114 WITH 030125 & 030126
 REMOVED 050206 & 050207

UNLESS OTHERWISE SPECIFIED DIMENSIONS ARE IN INCHES.		APPROVALS		DATE		27815 STATE ROUTE 7 MARIETTA, OHIO 45750 USA 740-374-6726
TOLERANCES ARE: DECIMALS .01 ± 2" .XX ± .005 FRACTIONAL ± 1/16 DO NOT SCALE DRAWING		DRAWN	EPP	01-17-13		
TREATMENT		ENGR			TITLE	
FINISH					PNEUMATIC JUNIOR 360 MODEL NO: JR360P CONTROL VALVE ASSEMBLY	
MATERIAL		SEE BOM			SIZE	REV.
					D	B
					DWG NO.	
					PL3360P-5	
					SCALE	SHEET
					5/8	1 OF 1

THIS MATERIAL IS THE PROPERTY OF MOLE MASTER SERVICES CORPORATION AND MAY NOT BE REPRODUCED, PUBLISHED, OR DISCLOSED TO OTHERS WITHOUT WRITTEN AUTHORIZATION AND MAY NOT BE USED IN ANY WAY AGAINST OR DETRIMENTAL TO MOLE MASTER SERVICES CORPORATION.

REVISION HISTORY			
REV	DESCRIPTION	DATE	BY
A	RVSD BOM, CREATED SF3010-00 WELDMENT	10-19-15	EPP
B	MADE HANDLE PART OF WINCH ASSY	01-08-20	EPP

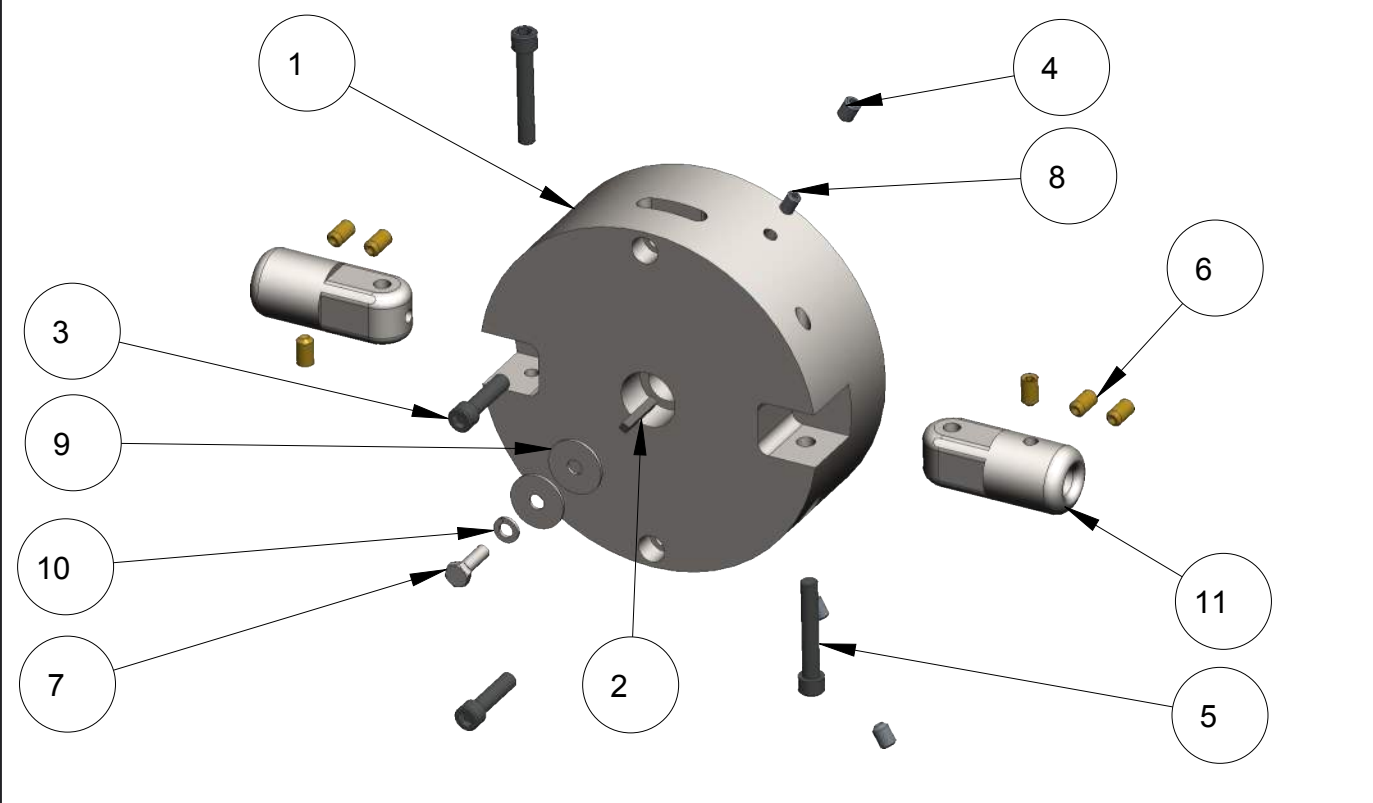
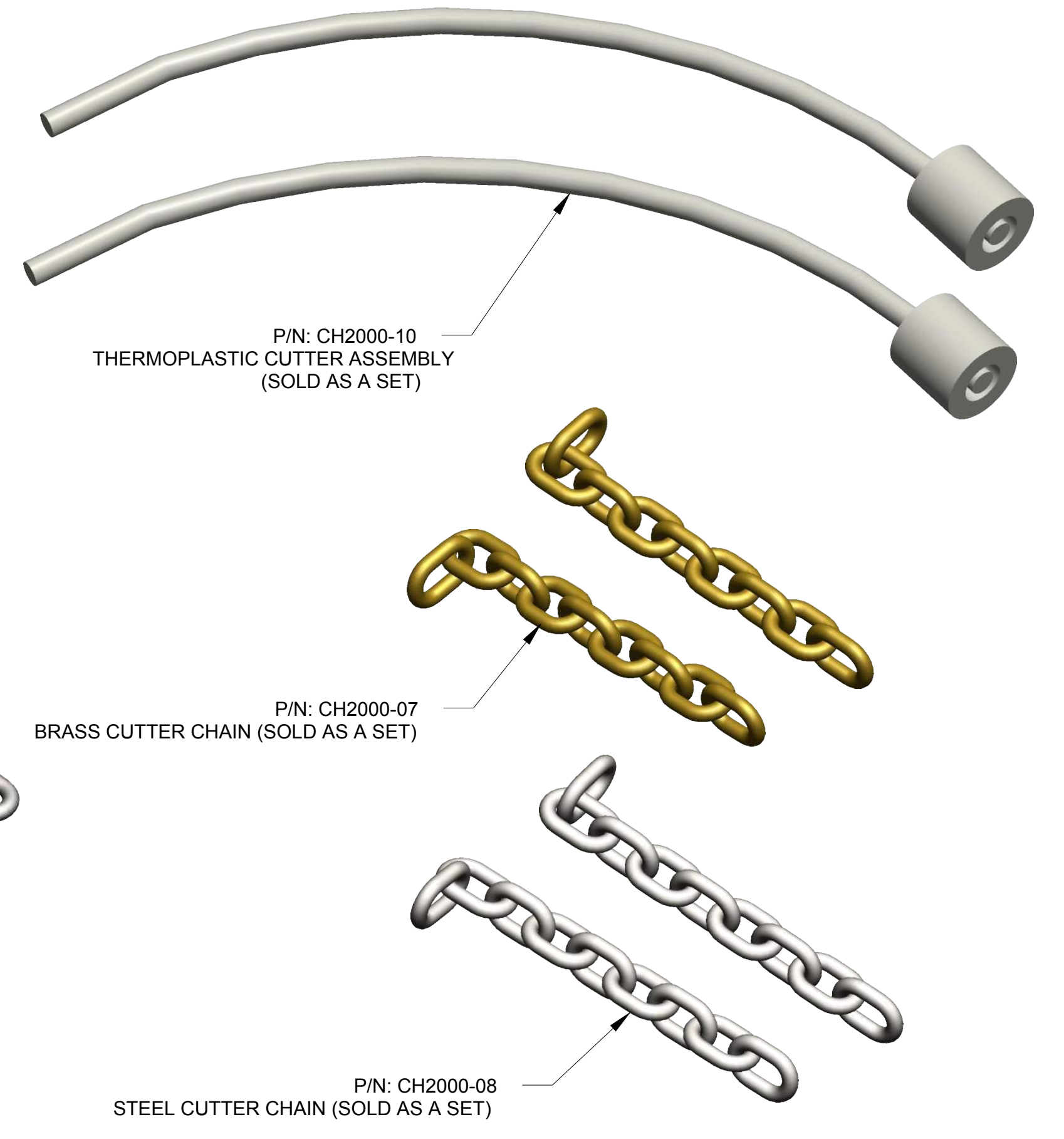
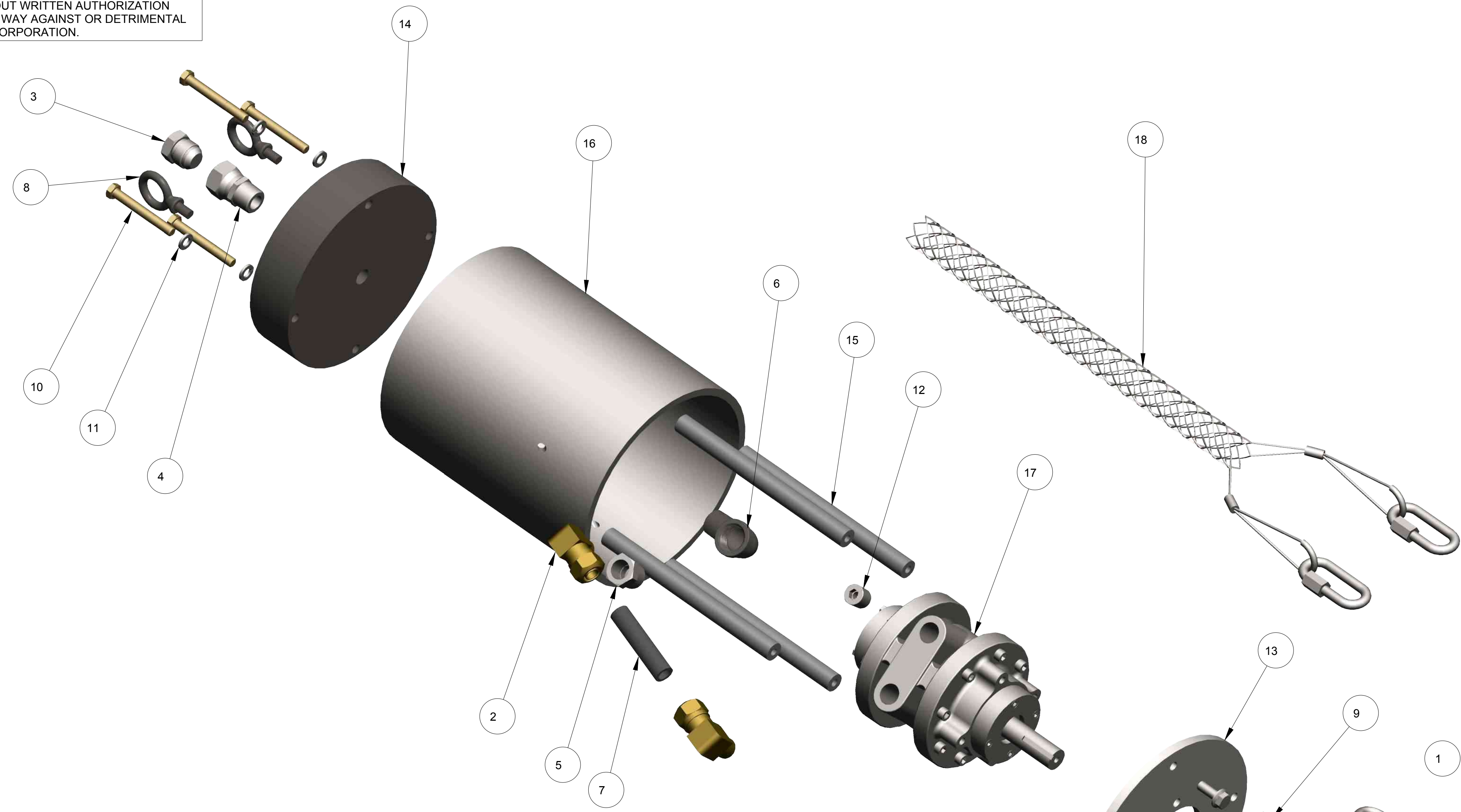


ITEM	QTY	PART NO.	DESCRIPTION
9	1	SF3010-00	UPPER SUPPORT FRAME WELDMENT
8	1	SF3002-00	MODIFIED WINCH ASSEMBLY
7	1	090107	1/2-13 x 1-1/2", HAND KNOB
6	4	010158	1/2" X 2-1/2", DETENT RING PIN
5	4	010113	3/16", BLIND POP-RIVET, BUTTON HEAD, ALUM
4	1	010112	5/8-11, HEX PULL PIN
3	2	010111_1	1/16" X 6", BARE CABLE, STEEL LANYARD
2	2	010111	1/16" X 6", BARE CABLE, STEEL LANYARD
1	1	010101	3/8-16 X 2" X 3", U-BOLT, ZP

UNLESS OTHERWISE SPECIFIED DIMENSIONS ARE IN INCHES.		APPROVALS		DATE		27815 STATE ROUTE 7 MARIETTA, OHIO 45750 USA 740-374-6726
TOLERANCES ARE: DECIMALS .01 ± .002 ANGLES .XX ± .005 FRACTIONAL ± 1/16		DRAWN	EPP	01-17-13		
DO NOT SCALE DRAWING		CHECKED	-	-	TITLE PNEUMATIC JUNIOR 360 MODEL NO: JR360P UPPER SUPPORT FRAME ASSY	
TREATMENT	-	ENGR	-	-	SIZE	REV.
FINISH	-				D	B
MATERIAL	SEE BOM				DWG NO.	PL3360P-6
		SCALE	3/8		CALC WT	ACT WT
					SHEET	1 OF 1

THIS MATERIAL IS THE PROPERTY OF MOLE MASTER SERVICES CORPORATION AND MAY NOT BE REPRODUCED, PUBLISHED, OR DISCLOSED TO OTHERS WITHOUT WRITTEN AUTHORIZATION AND MAY NOT BE USED IN ANY WAY AGAINST OR DETRIMENTAL TO MOLE MASTER SERVICES CORPORATION.

REVISION HISTORY			
REV	DESCRIPTION	DATE	BY
A	ADDED (1) CH3018-00	02-19-15	EPP
B	RVSD BOM FOR CH2000-00, CH3018-00 AND CH3019-00	09-10-18	EPP
C	CH3020-00 REPLACED CH3018-00	11-19-18	EPP

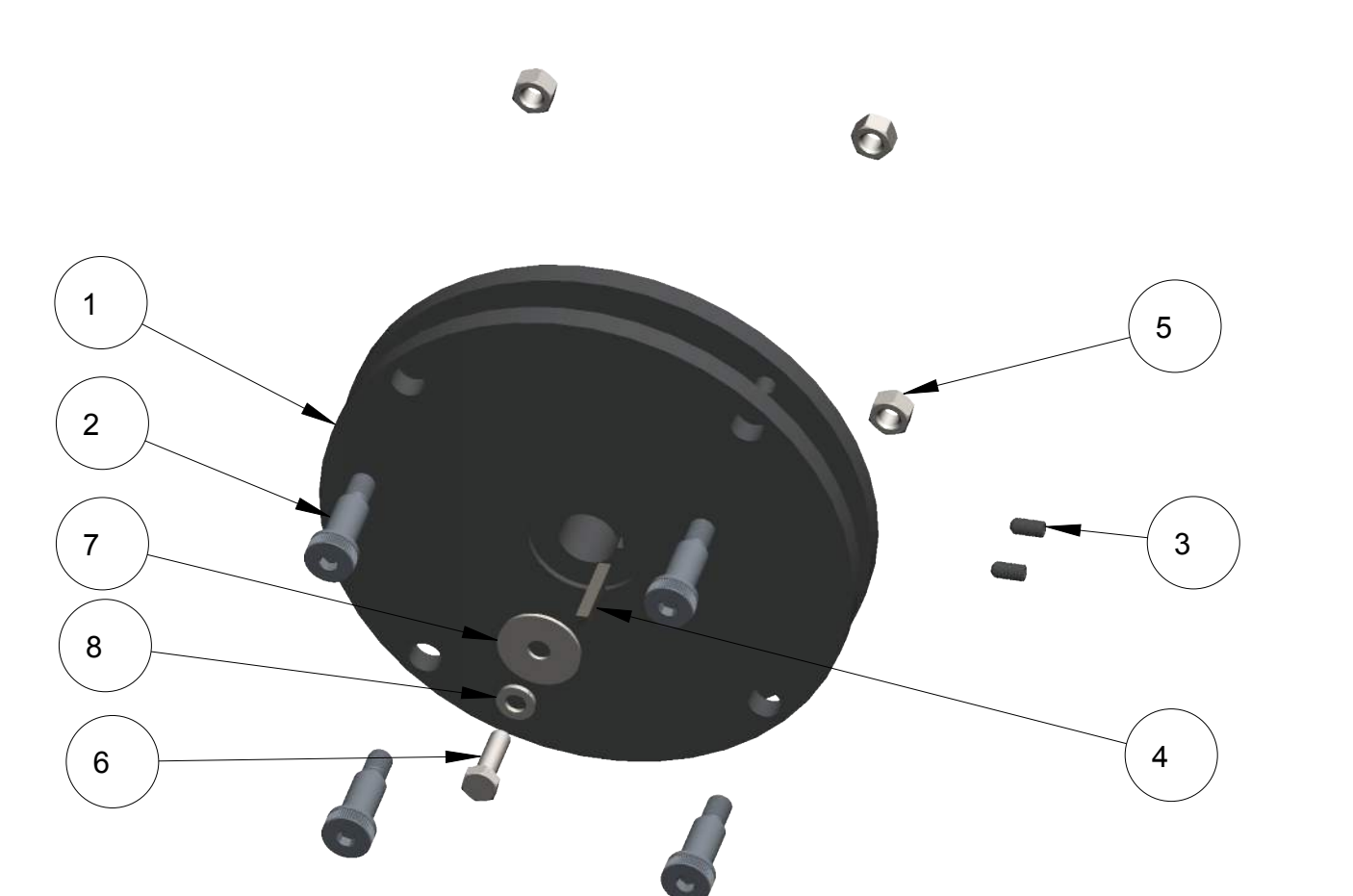


CH3020-00 (2 CHAIN & 2 WHIP ALUMINUM CUTTER HEAD ASSEMBLY)

ITEM	QTY	PART NO.	DESCRIPTION
11	2	CH3007-02	WHIP CUTTER ATTACHMENT HOUSING
10	1	040106	5/16", SPLIT LOCK WASHER, ZP
9	2	040105	5/16" x 1-1/4" FENDER WASHER, ZP
8	2	040103	5/16-18 X 1/2", SCKT. SET SCR, CUP PT, BLK. OXIDE
7	1	010115	5/16-18 X 1", HHCS, GR. 5, ZP
6	6	010100	3/8-16 X 5/8", SCKT. SET SCR, BRS
5	2	010122	3/8-16 X 2-1/4", SHCS, BLK. OXIDE
4	2	040104	3/8-16 X 1/2", SCKT. SET SCR, CUP PT, BLK. OXIDE
3	2	010121	3/8-16 X 1-1/2", SHCS, BLK. OXIDE
2	1	010108	3/16" SQUARE X 1-1/4" L, MACHINE KEY, STL
1	1	CH3020-01	2 CHAIN & 2 WHIP ALUMINUM CUTTER HEAD

ITEM QTY PART NO. DESCRIPTION

BILL OF MATERIALS

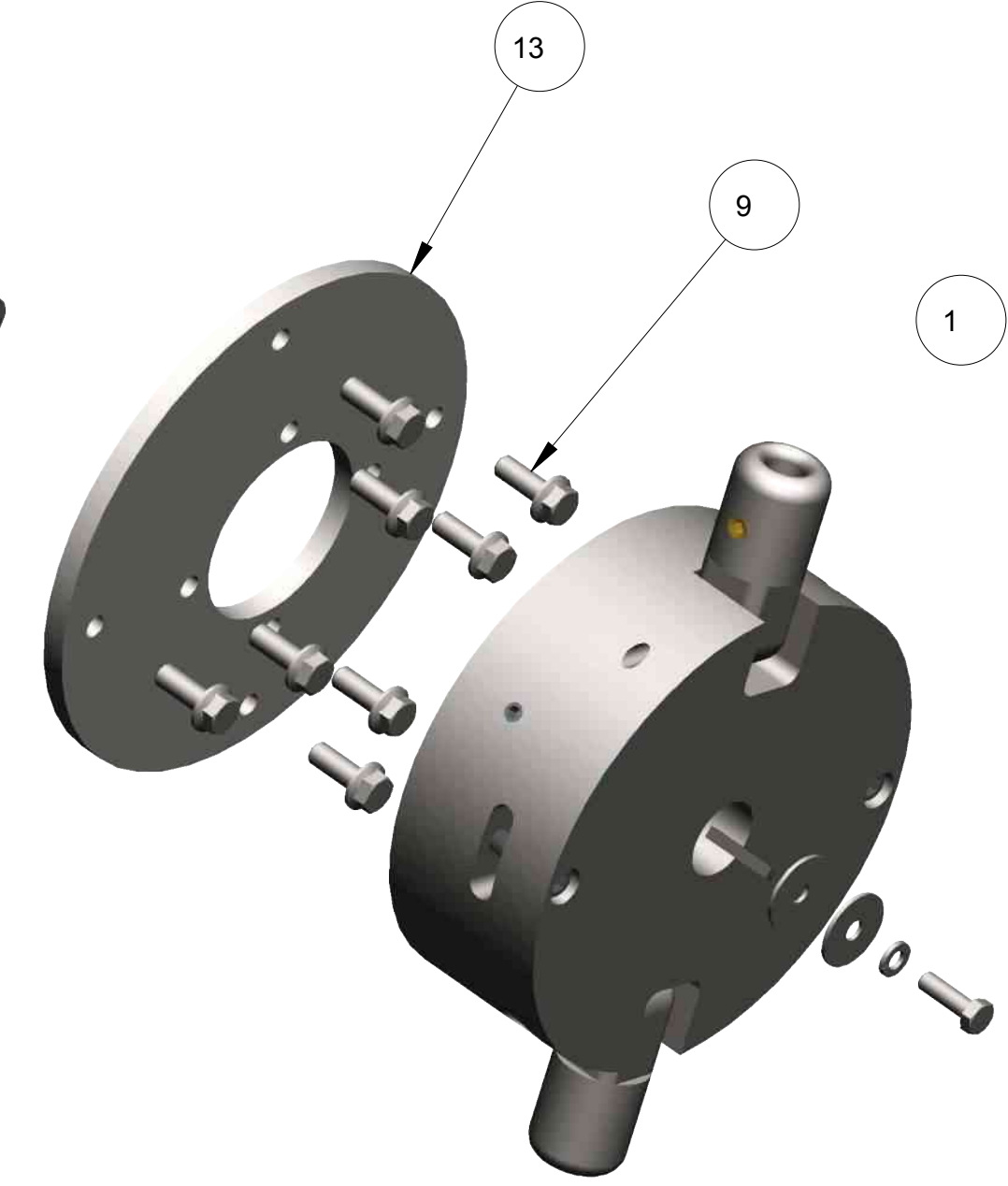


CH3019-00 (4 CHAIN STEEL FLAIL HEAD CUTTER ASSEMBLY)

ITEM	QTY	PART NO.	DESCRIPTION
8	1	040106	5/16", SPLIT LOCK WASHER, ZP
7	1	040105	5/16" x 1-1/4" FENDER WASHER, ZP
6	1	010115	5/16-18 X 1", HHCS, GR. 5, ZP
5	4	010139	3/8-16, HEX NUT, GR. A, ZP
4	1	010108	3/16" SQUARE X 1-1/4" L, MACHINE KEY, STL
3	2	010127	1/4-20 X 1/2", SCKT. SET SCR, CUP PT, BLK. OXIDE
2	4	010129	1/2 X 1", SCKT SHLDR. SCR, 3/8-16 THD
1	1	CH2000-50	4 CHAIN STEEL FLAIL HEAD

ITEM QTY PART NO. DESCRIPTION

BILL OF MATERIALS



050208 (STAINLESS STEEL HOSE CLAMPS FOR WHIP CUTTERS)
SOLD AS BOX OF 10 ONLY

ITEM	QTY	PART NO.	DESCRIPTION
18	1	CH3016-00	STRAIN RELIEF ASSEMBLY
17	1	060108	PNEUMATIC MOTOR
16	1	CH1000-06	OUTER HOUSING
15	4	CH2000-02	CUTTING HEAD TIE ROD
14	1	CH2000-01	COUNTER WEIGHT
13	1	CH2000-04	AIR MOTOR MOUNTING PLATE
12	1	CH3014-01	8MP, HOLLOW HEX PLUG, 21/32" ORIFICE
11	4	010137	3/8", SPLIT LOCK WASHER, ZP
10	4	040101	3/8-16 X 3", HHCS, GR. 8, YZ
9	8	040102	3/8-16 X 1", FLG BOLT, SERRATED WASHER, GR 8.2, ZP
8	2	CH3013-01	3/8 X 5/8" L, EYE BOLT, PLN FIN
7	1	CH3015-01	3/4" X 3-1/4" LG, AIR BRAKE TUBING, NYLON
6	1	060104	3/4" NPT, MALE PIPE-FEMALE PIPE 90° STREET ELBOW
5	1	050103	12MP-8FP, MALE PIPE-FEMALE PIPE HEX REDUCER BUSHING HYD ADAPTER
4	1	050107	12MP-12FJX, MALE PIPE-FEMALE JIC SWIVEL STRAIGHT HYD ADAPTER
3	1	050101	12MJ-PLUG, MALE JIC HEX PLUG HYD ADAPTER
2	2	060110	1469 X 12 90 DEG MALE ELBOW
1	1	CH3020-00	2 CHAIN & 2 WHIP ALUMINUM CUTTER HEAD ASSEMBLY

ITEM QTY PART NO. DESCRIPTION

UNLESS OTHERWISE SPECIFIED DIMENSIONS ARE IN INCHES.

TOLERANCES ARE:
DECIMALS .01 ± .002
ANGLES .XX ± .005
FRACTIONAL ± 1/16

DO NOT SCALE DRAWING

TREATMENT -

FINISH -

MATERIAL - SEE BOM

APPROVALS: EPP
DATE: 01-17-13

SCALE: 3/8

BILL OF MATERIALS

MOLE-MASTER SERVICES CORPORATION

27815 STATE ROUTE 7
MARIETTA, OHIO 45750 USA
740-374-6726

TITLE: PNEUMATIC JUNIOR 360
MODEL NO: JR360P
CUTTING HEAD ASSEMBLY

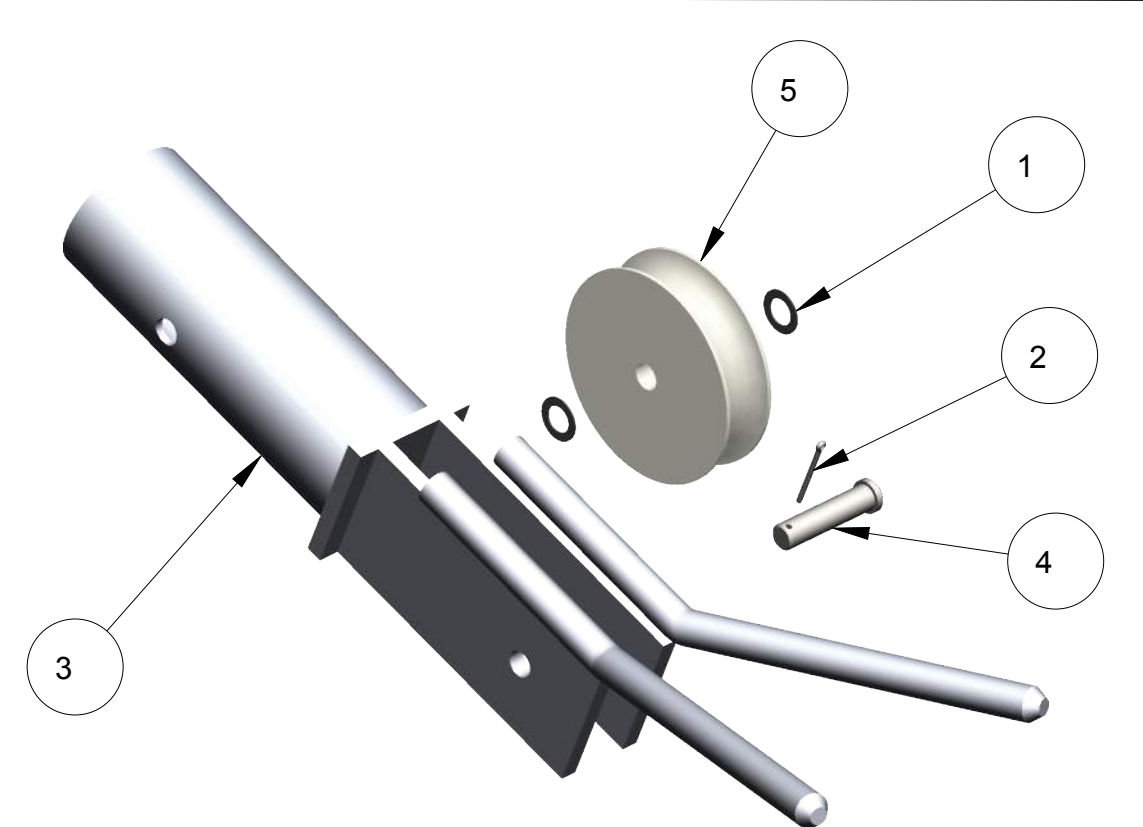
SIZE: D
DWG NO: PL3360P-7
REV: C

SCALE: 3/8

CARC WT ACT WT SHEET 1 OF 1

THIS MATERIAL IS THE PROPERTY OF MOLE MASTER SERVICES CORPORATION AND MAY NOT BE REPRODUCED, PUBLISHED, OR DISCLOSED TO OTHERS WITHOUT WRITTEN AUTHORIZATION AND MAY NOT BE USED IN ANY WAY AGAINST OR DETRIMENTAL TO MOLE MASTER SERVICES CORPORATION.

REVISION HISTORY			
REV	DESCRIPTION	DATE	BY
A	RVSD BOM FOR JB3010-00	02-15-16	EPP
B	MOVED 010148 TO M3100-00	07-22-19	EPP



JB3010-00 (BOOM END ASSEMBLY)

ITEM	QTY	PART NO.	DESCRIPTION
5	1	M2001-10	PULLEY, SINGLE SPOOL
4	1	JB3010-02	MODIFIED CLEVIS PIN
3	1	JB3020-00	BOOM END WELDMENT
2	1	010153	5/32" x 2", COTTER PIN, ZP
1	2	010135	3/4", MACHINERY BUSHING, 18 GA., PLN FIN

BILL OF MATERIALS

ITEM	QTY	PART NO.	DESCRIPTION
13	1	JB3008-00	EYE BOLT CLEVIS PIN
12	1	JB3006-01	BOOM EXTENSION
11	1	JB3004-01	BOOM EXTENSION
10	1	JB3003-01	BOOM EXTENSION
9	1	JB3002-00	BOOM EXTENSION
8	1	JB3010-00	BOOM END ASSEMBLY
7	1	JB3001-00	BOOM
6	1	030105	3/4" x 6-1/2" VINYL COATED HITCH PIN
5	3	010103	3/4" X 4-1/2", CLEVIS PIN, ZP
4	5	010159	3/4" SHAFT, RUE RING LOCKING COTTER PIN
3	1	JB3009-00	1/4" GALV AIRCRAFT CABLE ASSEMBLY 138-3/4" LG
2	1	JB3007-00	1/4" GALV AIRCRAFT CABLE ASSEMBLY 50-1/4" LG
1	1	030124	1/2" ROUND PIN CHAIN SHACKLE

BILL OF MATERIALS

UNLESS OTHERWISE SPECIFIED DIMENSIONS ARE IN INCHES.

TOLERANCES ARE:
 DECIMALS .01 ± 2"
 .XX ± .005
 FRACTIONAL ± 1/16

DO NOT SCALE DRAWING

TREATMENT: -
 FINISH: -
 MATERIAL: SEE BOM

APPROVALS	DATE
EPP	03-12-13
CHECKED	-
ENGR	-

SCALE: 3/16

27815 STATE ROUTE 7
 MARIETTA, OHIO
 45750 USA
 740-374-6726

MOLE-MASTER SERVICES CORPORATION

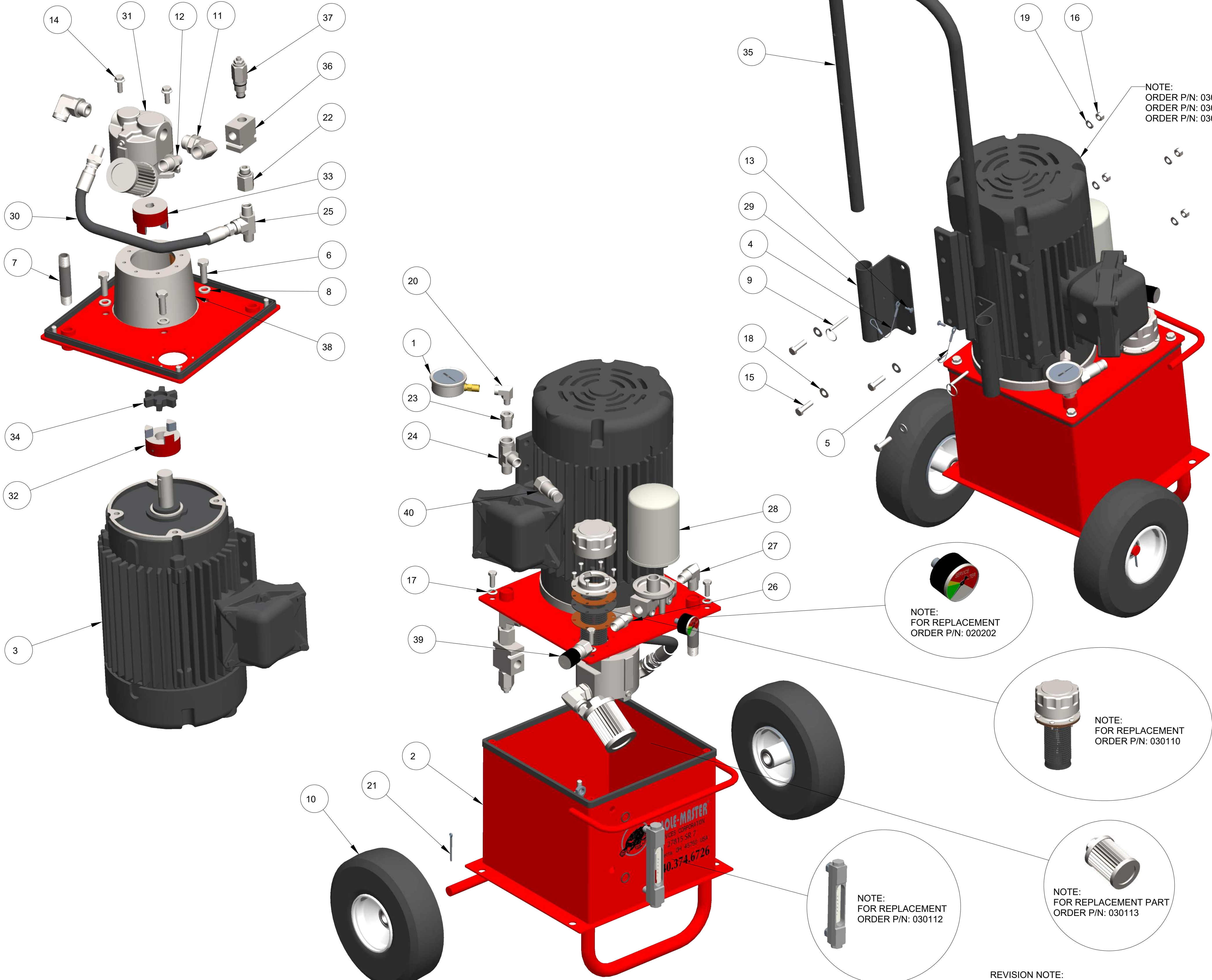
TITLE: PNEUMATIC JUNIOR 360
 MODEL NO: JR360P
 BOOM ASSEMBLY

SIZE: D
 DWG NO: PL3360P-8
 REV: B

SHEET 1 OF 1

THIS MATERIAL IS THE PROPERTY OF MOLE MASTER SERVICES CORPORATION AND MAY NOT BE REPRODUCED, PUBLISHED, OR DISCLOSED TO OTHERS WITHOUT WRITTEN AUTHORIZATION AND MAY NOT BE USED IN ANY WAY AGAINST OR DETRIMENTAL TO MOLE MASTER SERVICES CORPORATION.

REVISION HISTORY			
REV	DESCRIPTION	DATE	BY
A	040102 WAS 010117	05-15-14	EPP
B	050102 WAS 020101, 050105 WAS 020103	05-30-14	EPP
C	REPLACED 030103 & 030104 WITH 030148	03-29-17	EPP
D	SEE REVISION NOTE	02-25-22	EPP



NOTE:
 ORDER P/N: 030115 FOR EXPLOSION PROOF AC MOTOR
 ORDER P/N: 030139 FOR 200 & 575 VOLT ELECTRIC AC MOTOR
 ORDER P/N: 030140 FOR 380 VOLT EXPLOSION PROOF MOTOR

SOLD ONLY AS A SET
 ORDER 030127

ITEM QTY	PART NO.	DESCRIPTION
40	1	030125 QUICK COUPLING, MALE END, 1/2" FEMALE PIPE
39	1	030126 QUICK COUPLING, FEMALE END, 1/2" FEMALE PIPE
38	1	030111 PUMP MOUNT FOR ELECTRIC MOTOR
37	1	030128 PRESSURE RELIEF CARTRIDGE
36	1	030129 PRESSURE RELIEF BODY
35	1	PU3001-01 POWER UNIT HANDLE
34	1	030119 LOVEJOY-SPIDER COUPLING-L099/L100SOX
33	1	030120 LOVEJOY COUPLER-L099X5/8HUB3/16
32	1	030121 LOVEJOY COUPLER-L099X1 1/8HUB1/4
31	1	060107 HYDRAULIC GEAR PUMP
30	1	HH3004-00_1 HOSE ASSY,#8M3K,(1)8GE-8MPX,(1)8GE-8MP, 18" LGTH
29	2	PU3002-00 HANDLE MOUNTING BRACKET
28	1	030122 FILTER ASSEMBLY, HYDRAULIC OIL
27	1	050105 8MP-8MP90, MALE PIPE-MALE PIPE 90 D ELBOW HYD ADAPTER
26	1	050102 8MP-8MP, MALE PIPE-MALE PIPE HEX NIPPLE
25	1	020105 8MP-8MP-8FP, MALE PIPE-MALE PIPE-FEMALE PIPE TEE HYD ADAPTER
24	1	020106 8MP-8FP-8MP, MALE PIPE-FEMALE PIPE-MALE PIPE TEE HYD ADAPTER
23	1	020102 8MP-4FP, MALE PIPE-FEMALE PIPE HEX REDUCER BUSHING HYD ADAPTER
22	1	020110 8MB-8FP, MALE O RING BOSS-FEMALE PIPE THREAD STR HYD ADAPT
21	2	010153 5/32" X 2", COTTER PIN, ZP
20	1	020104 4MP-4FP90, MALE PIPE-FEMALE 90° STREET ELBOW HYD ADAPTER
19	4	010137 3/8", SPLIT LOCK WASHER, ZP
18	4	010131 3/8", FLAT WASHER, SAE, ZP
17	4	010133 3/8", BONDED SEALING WASHER, 18-8 SS
16	4	010139 3/8-16, HEX NUT, GR. A, ZP
15	4	010118 3/8-16 X 1-1/4", HHCS, GR. 5, ZP
14	2	040102 3/8-16 X 1", FLG BOLT, SERRATED WASHER, GR 8.2, ZP
13	2	010113 3/16", BLIND POP-RIVET, BUTTON HEAD, ALUM
12	1	020101 12MP-8MP, MALE PIPE-MALE PIPE HEX NIPPLE HYD ADAPTER
11	2	050108 12MB-8FP90, MALE O-RING BOSS-FEMALE PIPE 90° ELBOW HYD ADAPTER
10	2	030148 10" FLAT FREE WHEEL ASSY, 3" OFFSET
9	2	010157 1/4" X 1-1/2", DETENT RING PIN
8	4	010138 1/2", SPLIT LOCK WASHER, ZP
7	1	010149 1/2" X 4", SEAMLESS PIPE NIPPLE, SCHD 80, 3000#
6	4	010120 1/2-13 X 1-1/2", HHCS, GR. 5, ZP
5	1	010111_6 1/16" X 6", BARE CABLE, STEEL LANYARD
4	1	010111_4 1/16" X 6", BARE CABLE, STEEL LANYARD
3	1	030138 5 HP, 1750 RPM, 3PH, TEFC GENERAL PURPOSE ELECTRIC AC MOTOR
2	1	030114 5 GALLON VERTICAL HYDRAULIC RESERVOIR
1	1	020203 2-1/2"-3000 PSI GLY GAUGE, 1/4" NPT BOTTOM MOUNT

NOTE:
 FOR REPLACEMENT
 ORDER P/N: 020202

NOTE:
 FOR REPLACEMENT
 ORDER P/N: 030110

NOTE:
 FOR REPLACEMENT
 ORDER P/N: 030112

NOTE:
 FOR REPLACEMENT PART
 ORDER P/N: 030113

REVISION NOTE:
 REPLACED 060113 & 060114 WITH 030125 & 030126
 REMOVED 050206 & 050207

UNLESS OTHERWISE SPECIFIED
 DIMENSIONS ARE IN INCHES.

TOLERANCES ARE:
 DECIMALS ANGLES
 .XX± .01 ±2°
 .XXX± .005
 FRACTIONAL ± 1/16

DO NOT SCALE DRAWING

TREATMENT	-
FINISH	-
MATERIAL	SEE BOM

APPROVALS	DATE
DRAWN	EPP 01-17-13
CHECKED	-
ENGR	-

27815 STATE ROUTE 7
 MARIETTA, OHIO
 45750 USA
 740-374-6726

MOLE-MASTER SERVICES CORPORATION

TITLE: PNEUMATIC JUNIOR 360
 MODEL NO: JR360P
 POWER UNIT ASSEMBLY

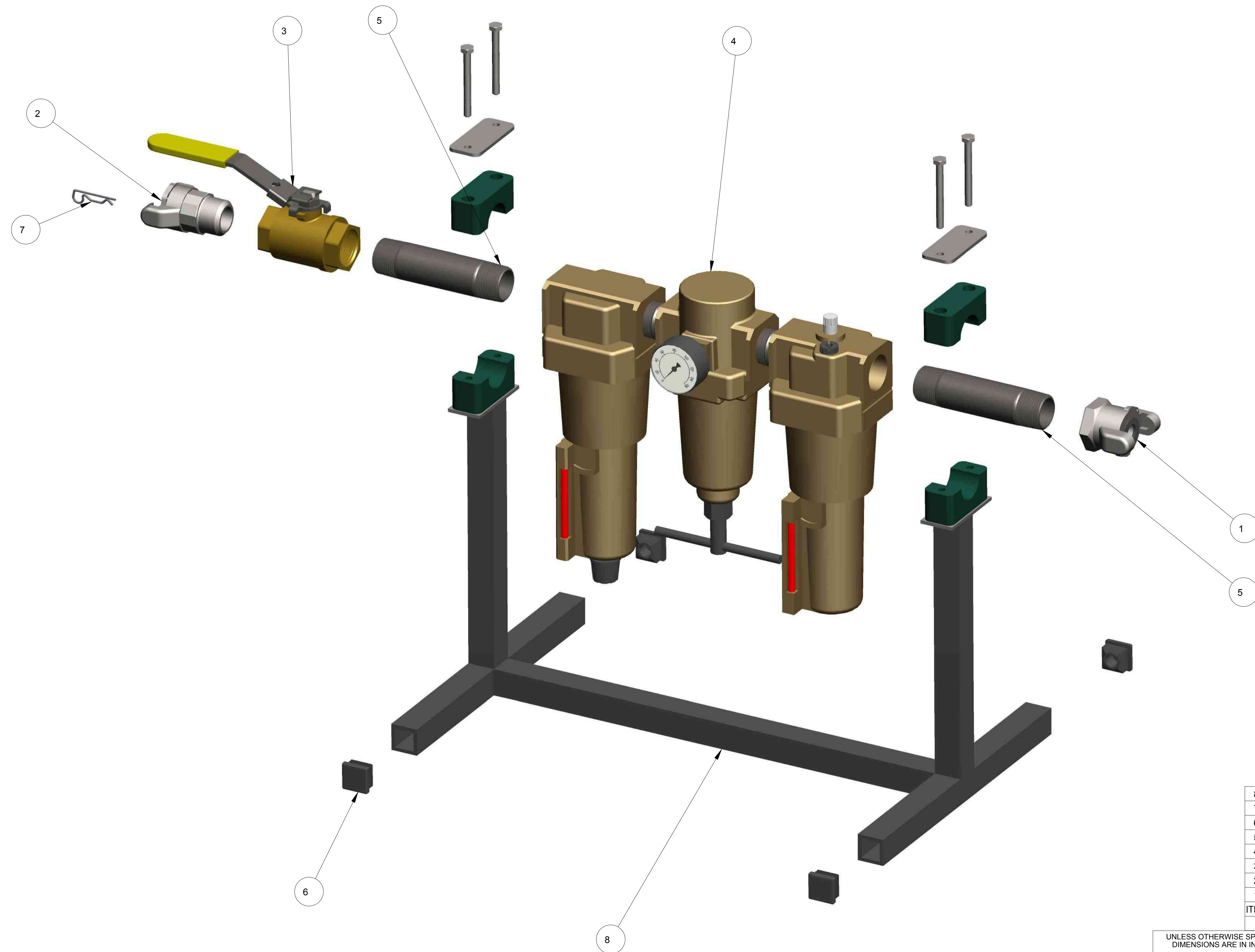
PL3360P-9

SCALE 1/4" = 1"

SHEET 1 OF 1

THIS MATERIAL IS THE PROPERTY OF MOLE MASTER SERVICES CORPORATION AND MAY NOT BE REPRODUCED, PUBLISHED, OR DISCLOSED TO OTHERS WITHOUT WRITTEN AUTHORIZATION AND MAY NOT BE USED IN ANY WAY AGAINST OR DETRIMENTAL TO MOLE MASTER SERVICES CORPORATION.

REVISION HISTORY			
REV	DESCRIPTION	DATE	BY
A	REPLACED 060117 WITH 060101	07-11-19	EPP



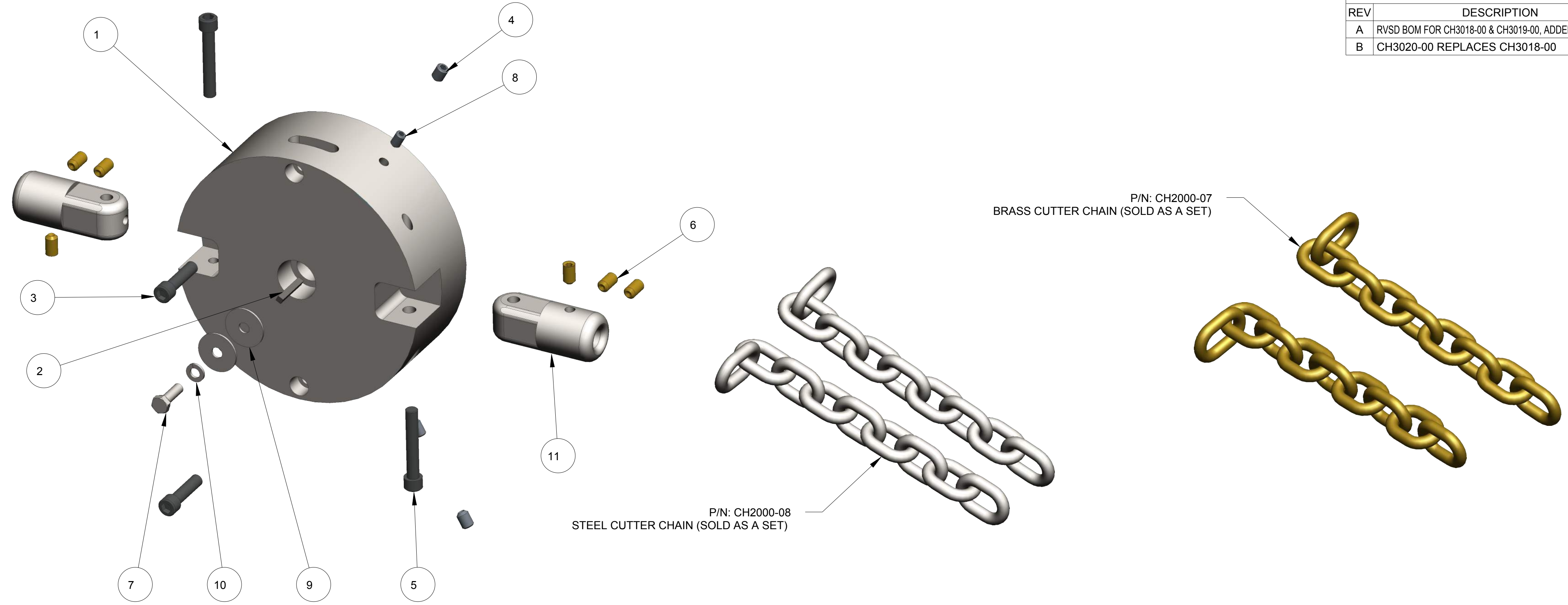
NOTE: ORDER 050209 FOR REPLACEMENT PRESSUE GAUGE

ITEM	QTY	PART NO.	DESCRIPTION
8	1	FRL3001-00	MOUNTING BASE WELDMENT
7	1	050200	AIR KING SAFETY CLIP
6	4	060106	1" SQUARE TUBE PLUG, PLASTIC, BLACK
5	2	060101	1" PIPE NIPPLE X 5" LONG, SCHD 40, STL
4	1	060112	1" NPT PORTED, FILTER-REGULATOR-LUBRICATOR ASSEMBLY
3	1	060100	1" NPT BRASS BALL VALVE WITH LOCKABLE LEVER HANDLE, FEMALE CONN
2	1	050203	1" MPT, CHICAGO FITTING/AIR KING UNIVERSAL COUPLING
1	1	050204	1" FPT, CHICAGO FITTING/AIR KING UNIVERSAL COUPLING

UNLESS OTHERWISE SPECIFIED DIMENSIONS ARE IN INCHES.		APPROVALS		DATE			27815 STATE ROUTE 7 MARIETTA, OHIO 45750 USA 740-374-6726	
TOLERANCES ARE: DECIMALS .01 ± 2" .XX ± .01 ± 2" .XXX ± .005 FRACTIONAL ± 1/16		DRAWN		EPP	TITLE		PNEUMATIC JUNIOR 360	
DO NOT SCALE DRAWING		CHECKED		-	MODEL NO:		JR360P	
TREATMENT	-	ENGR		-	FILTER-REGULATOR-LUBRICATOR ASSY			
FINISH	-	SCALE		1/2	DWG NO.		PL3360P-10	
MATERIAL	SEE BOM	SHEET		1 OF 1	REV.		A	

THIS MATERIAL IS THE PROPERTY OF MOLE MASTER SERVICES CORPORATION AND MAY NOT BE REPRODUCED, PUBLISHED, OR DISCLOSED TO OTHERS WITHOUT WRITTEN AUTHORIZATION AND MAY NOT BE USED IN ANY WAY AGAINST OR DETRIMENTAL TO MOLE MASTER SERVICES CORPORATION.

REVISION HISTORY			
REV	DESCRIPTION	DATE	BY
A	RVSD BOM FOR CH3018-00 & CH3019-00, ADDED 050208	09-10-18	EPP
B	CH3020-00 REPLACES CH3018-00	11-19-18	EPP



CH3020-00 (2 CHAIN & 2 WHIP ALUMINUM CUTTER ASSEMBLY)

ITEM	QTY	PART NO.	DESCRIPTION
11	2	CH3007-02	WHIP CUTTER ATTACHMENT HOUSING
10	1	040106	5/16", SPLIT LOCK WASHER, ZP
9	2	040105	5/16" x 1-1/4" FENDER WASHER, ZP
8	2	040103	5/16-18 X 1/2", SCKT. SET SCR, CUP PT, BLK. OXIDE
7	1	010115	5/16-18 X 1", HHCS, GR. 5, ZP
6	6	010100	3/8-16 X 5/8", SCKT. SET SCR, BRS
5	2	010122	3/8-16 X 2-1/4", SHCS, BLK. OXIDE
4	2	040104	3/8-16 X 1/2", SCKT. SET SCR, CUP PT, BLK. OXIDE
3	2	010121	3/8-16 X 1-1/2", SHCS, BLK. OXIDE
2	1	010108	3/16" SQUARE X 1-1/4" L, MACHINE KEY, STL
1	1	CH3020-01	2 CHAIN & 2 WHIP ALUMINUM CUTTER HEAD

ITEM QTY PART NO. DESCRIPTION

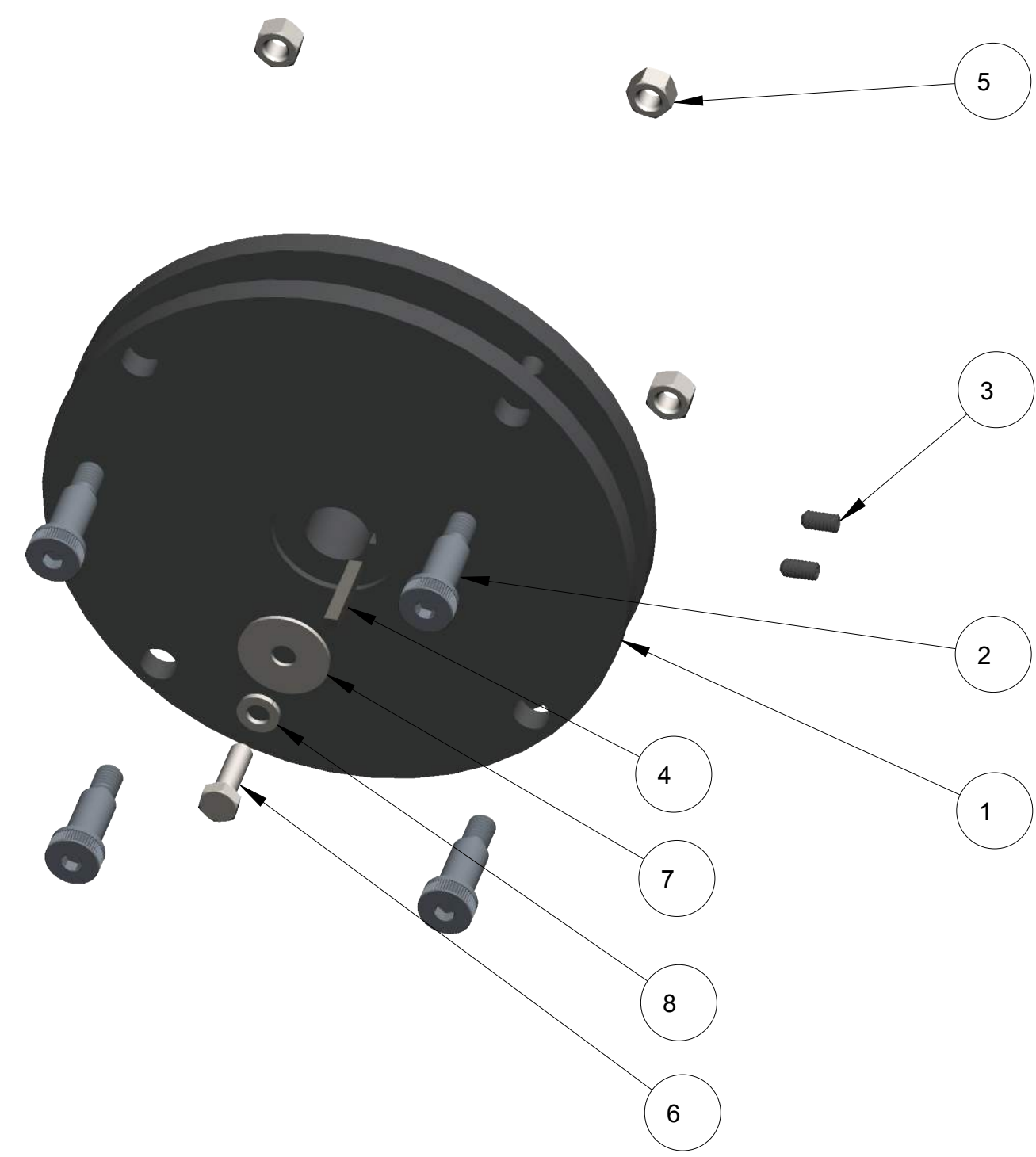
BILL OF MATERIALS

CH3019-00 (4 CHAIN STEEL FLAIL HEAD CUTTER ASSEMBLY)

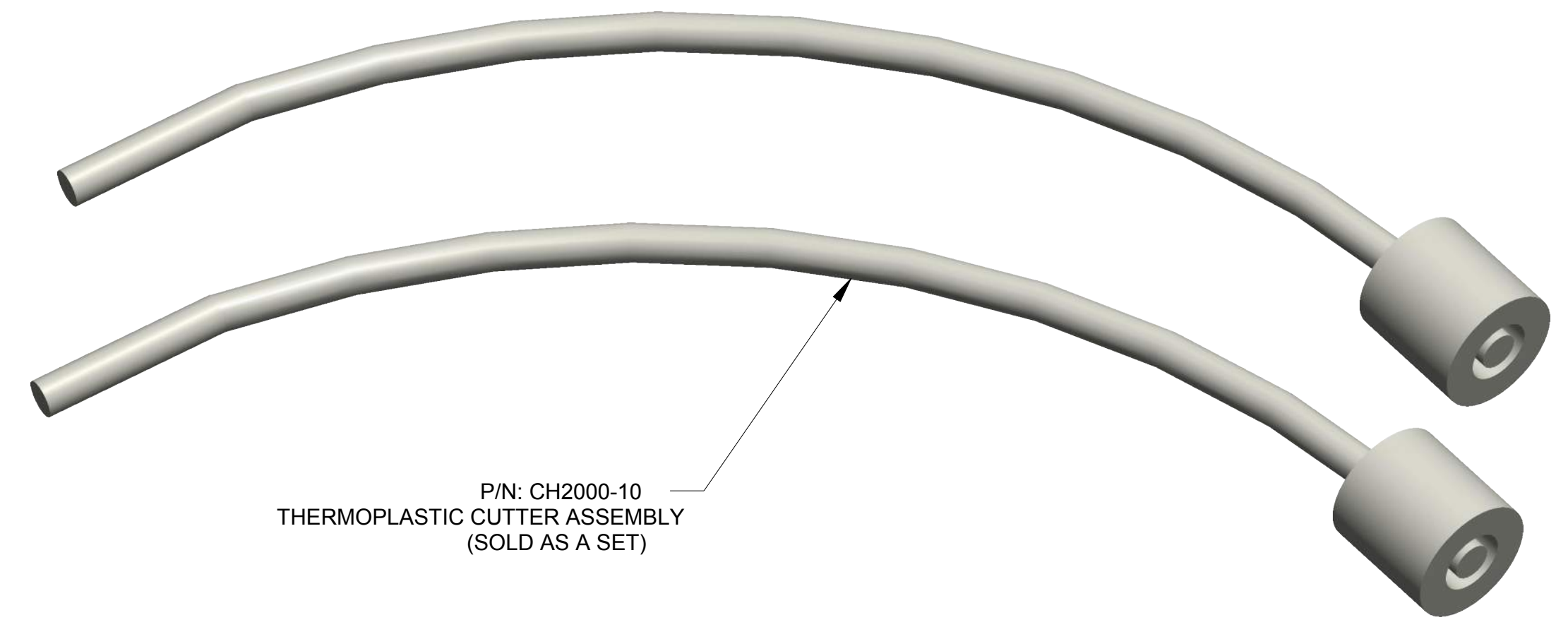
ITEM	QTY	PART NO.	DESCRIPTION
8	1	040106	5/16", SPLIT LOCK WASHER, ZP
7	1	040105	5/16" x 1-1/4" FENDER WASHER, ZP
6	1	010115	5/16-18 X 1", HHCS, GR. 5, ZP
5	4	010139	3/8-16, HEX NUT, GR. A, ZP
4	1	010108	3/16" SQUARE X 1-1/4" L, MACHINE KEY, STL
3	2	010127	1/4-20 X 1/2", SCKT. SET SCR, CUP PT, BLK. OXIDE
2	4	010129	1/2 X 1", SCKT SHLDR. SCR, 3/8-16 THD
1	1	CH2000-50	4 CHAIN STEEL FLAIL HEAD

ITEM QTY PART NO. DESCRIPTION

BILL OF MATERIALS



050208 (STAINLESS STEEL HOSE CLAMPS FOR WHIP CUTTERS) SOLD AS BOX OF 10 ONLY



UNLESS OTHERWISE SPECIFIED DIMENSIONS ARE IN INCHES.		APPROVALS		DATE		27815 STATE ROUTE 7 MARIETTA, OHIO 45750 USA 740-374-6726
TOLERANCES ARE: DECIMALS ANGLES .XX ± .01 ± 2° .XXX ± .005 FRACTIONAL ± 1/16		DRAWN	EPP	01-17-13		
DO NOT SCALE DRAWING		CHECKED	-	-	TITLE	
TREATMENT		ENGR			PNEUMATIC JUNIOR 360	
FINISH					MODEL NO: JR360P	
MATERIAL		SEE BOM			ASSESSORIES	
		SCALE		3/8	SIZE	D
					DWG NO.	PL3360P-11
					REV.	B
					CALC WT	ACT WT
					SHEET	1 OF 1