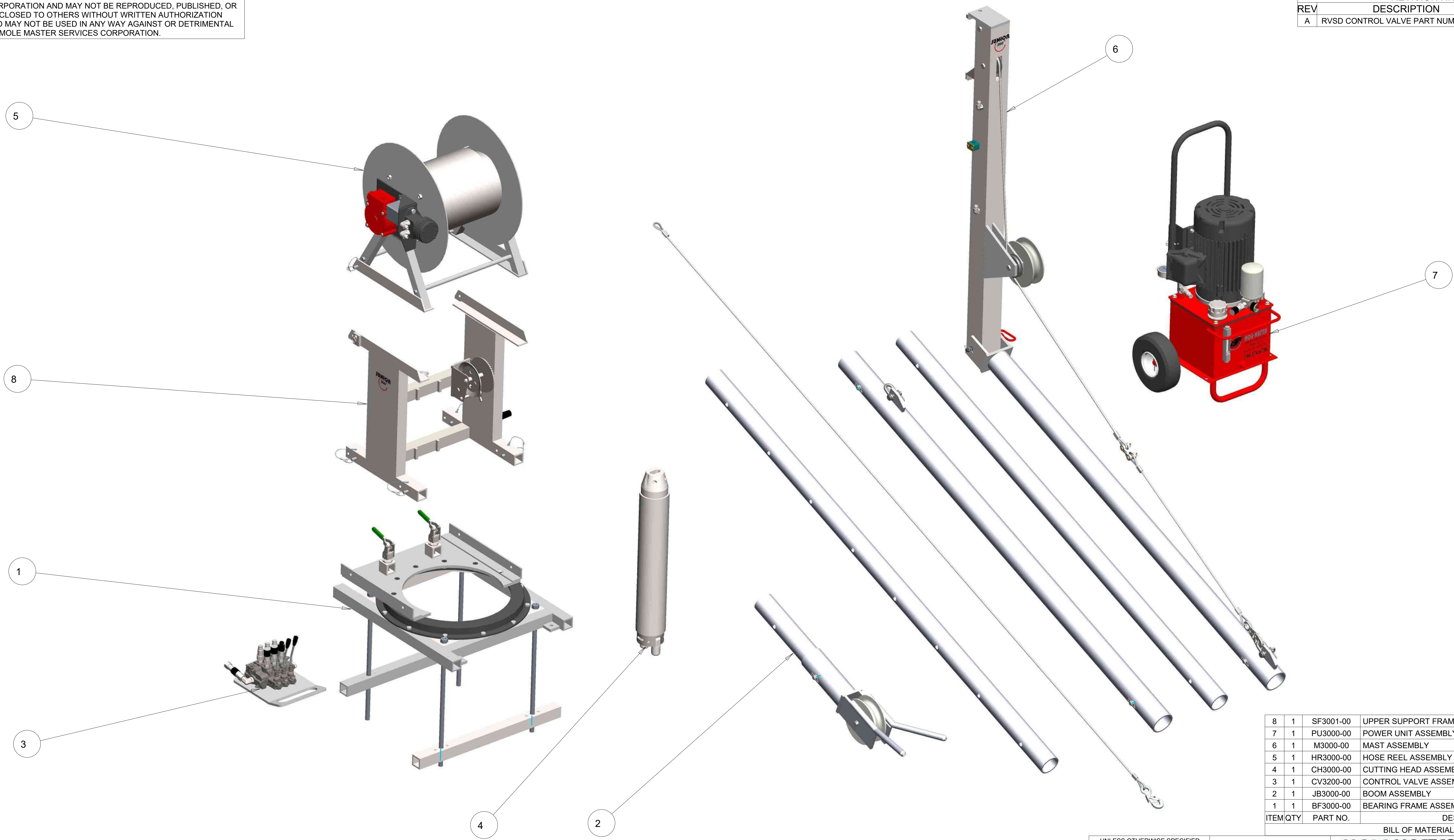


THIS MATERIAL IS THE PROPERTY OF MOLE MASTER SERVICES CORPORATION AND MAY NOT BE REPRODUCED, PUBLISHED, OR DISCLOSED TO OTHERS WITHOUT WRITTEN AUTHORIZATION AND MAY NOT BE USED IN ANY WAY AGAINST OR DETRIMENTAL TO MOLE MASTER SERVICES CORPORATION.

REVISION HISTORY			
REV	DESCRIPTION	DATE	BY
A	RVSD CONTROL VALVE PART NUMBER	01-08-20	EPP



ITEM	QTY	PART NO.	DESCRIPTION
8	1	SF3001-00	UPPER SUPPORT FRAME
7	1	PU3000-00	POWER UNIT ASSEMBLY
6	1	M3000-00	MAST ASSEMBLY
5	1	HR3000-00	HOSE REEL ASSEMBLY
4	1	CH3000-00	CUTTING HEAD ASSEMBLY
3	1	CV3200-00	CONTROL VALVE ASSEMBLY
2	1	JB3000-00	BOOM ASSEMBLY
1	1	BF3000-00	BEARING FRAME ASSEMBLY

UNLESS OTHERWISE SPECIFIED DIMENSIONS ARE IN INCHES.

TOLERANCES ARE:
 DECIMALS ANGLES
 .XX± .01 ±2°
 .XXX± .005
 FRACTIONAL ± 1/16

DO NOT SCALE DRAWING

APPROVALS	DATE
DRAWN	EPP 12-14-12
CHECKED	-
ENGR	-

27815 STATE ROUTE 7
 MARIETTA, OHIO
 45750 USA
 740-374-6726

MOLE-MASTER SERVICES CORPORATION

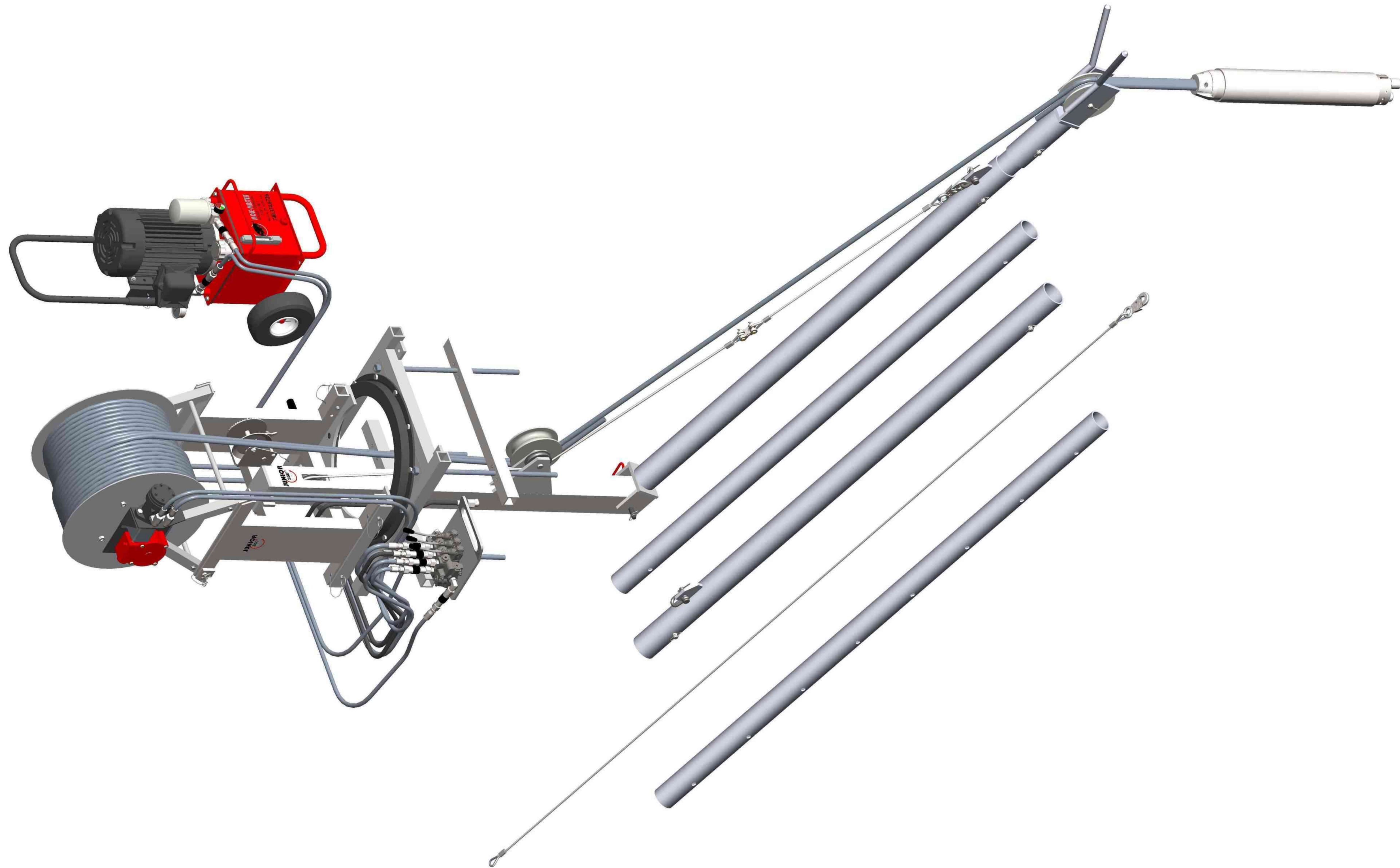
TITLE: HYDRAULIC JUNIOR 360
 MODEL NO: JR360H
 MASTER PARTS LIST

SIZE: D DWG NO: PL3360H-1 REV: A

SCALE: 1/8 SHEET: 1 OF 2

THIS MATERIAL IS THE PROPERTY OF MOLE MASTER SERVICES CORPORATION AND MAY NOT BE REPRODUCED, PUBLISHED, OR DISCLOSED TO OTHERS WITHOUT WRITTEN AUTHORIZATION AND MAY NOT BE USED IN ANY WAY AGAINST OR DETRIMENTAL TO MOLE MASTER SERVICES CORPORATION.

REVISION HISTORY			
REV	DESCRIPTION	DATE	BY

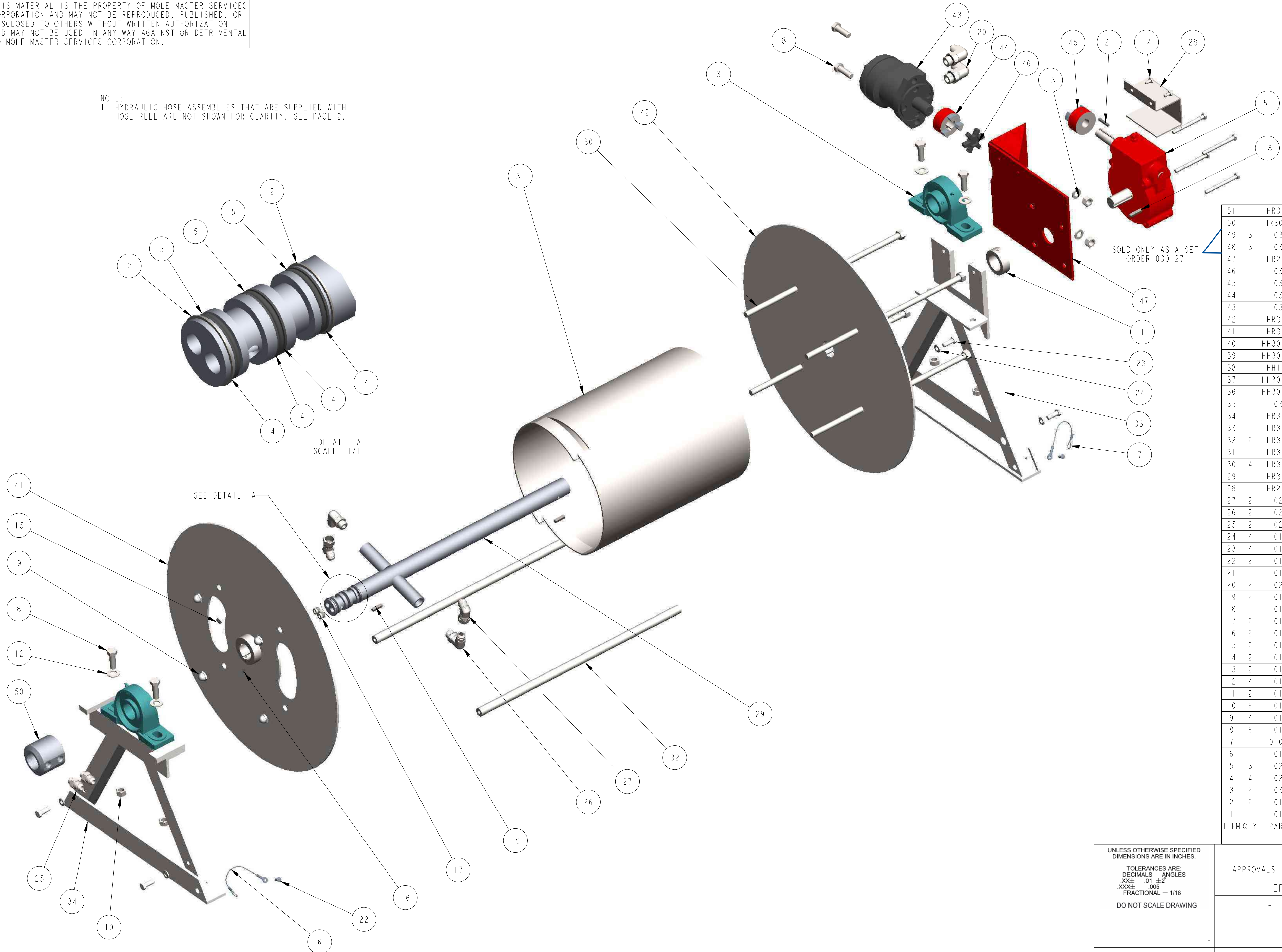


UNLESS OTHERWISE SPECIFIED DIMENSIONS ARE IN INCHES.				MOLE-MASTER SERVICES CORPORATION		27815 STATE ROUTE 7 MARIETTA, OHIO 45750 USA 740-374-6726	
TOLERANCES ARE: DECIMALS ANGLES .XX± .01 ±2° .XXX± .005 FRACTIONAL ± 1/16		APPROVALS	DATE	TITLE			
DO NOT SCALE DRAWING		DRAWN	EPP	12-14-12	HYDRAULIC JUNIOR 360		
TREATMENT		CHECKED	-	-	MODEL NO: JR360H		
FINISH		ENGR	-	-	MASTER PARTS LIST		
MATERIAL				SIZE	DWG NO.	REV.	
				D	PL3360H-1	A	
				SCALE	1/8	CALC WT	ACT WT
				SHEET		2 OF 2	

THIS MATERIAL IS THE PROPERTY OF MOLE MASTER SERVICES CORPORATION AND MAY NOT BE REPRODUCED, PUBLISHED, OR DISCLOSED TO OTHERS WITHOUT WRITTEN AUTHORIZATION AND MAY NOT BE USED IN ANY WAY AGAINST OR DETRIMENTAL TO MOLE MASTER SERVICES CORPORATION.

REVISION HISTORY			
REV	DESCRIPTION	DATE	BY
A	ADDED 030141	03-07-16	EPP

NOTE:
1. HYDRAULIC HOSE ASSEMBLIES THAT ARE SUPPLIED WITH HOSE REEL ARE NOT SHOWN FOR CLARITY. SEE PAGE 2.



SOLD ONLY AS A SET
ORDER 030127

ITEM	QTY	PART NO.	DESCRIPTION
51	1	HR3009-01	TERNER GEAR REDUCER
50	1	HR3000-031	SWIVEL FITTING
49	3	030125	QUICK COUPLING, MALE END, 1/2" FEMALE PIPE
48	3	030126	QUICK COUPLING, FEMALE END, 1/2" FEMALE PIPE
47	1	HR2003-00	MOTOR MOUNTING BRACKET WELDMENT
46	1	030116	LOVEJOY-SPIDER COUPLING-L090/L095SOX
45	1	030117	LOVEJOY COUPLER-L095X3/4HUB3/16
44	1	030118	LOVEJOY COUPLER-L095X1HUB1/4
43	1	030137	HYDRAULIC MOTOR
42	1	HR3006-00	HOSE REEL END
41	1	HR3005-00	HOSE REEL END
40	1	HH3003-00	HOSE ASSY, #8M3K, (1) 8GE-8FJX, (1) 8GE-8MP, 144" LGTH
39	1	HH3003-00	HOSE ASSY, #8M3K, (1) 8GE-8FJX, (1) 8GE-8MP, 144" LGTH
38	1	HH1920-00	HOSE ASSY, #8M3K, (2) 165'-0" LGTH, (1) HG-28, SLEEVE
37	1	HH3001-00	HOSE ASSY, #6M3K, (1) 6G-8FJX, (1) 6G-8MP, 140" LGTH
36	1	HH3001-00	HOSE ASSY, #6M3K, (1) 6G-8FJX, (1) 6G-8MP, 140" LGTH
35	1	030141	HEAT SHRINK TUBE, 4FT LG
34	1	HR3002-00	FRAME, SWIVEL SIDE
33	1	HR3001-00	FRAME, DRIVE SIDE
32	2	HR3003-01	FRAME CONNECTING ROD
31	1	HR3004-01	DRUM, HOSE REEL
30	4	HR3008-00	DRUM TIE ROD
29	1	HR3007-00	DRIVE SHAFT WELDMENT
28	1	HR2000-02	COUPLING GUARD
27	2	020113	8MJ-8FJX45, MALE JIC-FEMALE JIC SWIVEL 45° EL HYD ADPT
26	2	020114	8MB-8MJ90, MALE O RING BOSS-MALE JIC 90° EL HYD ADPT
25	2	020108	6MB-8MJ, MALE O RING BOSS-MALE JIC HYD ADAPTER
24	4	010137	3/8", SPLIT LOCK WASHER, ZP
23	4	010117	3/8-16 X 1", HHCS, GR. 5, ZP
22	2	010113	3/16", BLIND POP-RIVET, BUTTON HEAD, ALUM
21	1	010108	3/16" SQUARE X 1-1/4" L, MACHINE KEY, STL
20	2	020115	10MB-8MJ90, MALE O RING BOSS-MALE JIC 90° EL HYD ADPT
19	2	010109	1/4" SQUARE X 1" L, MACHINE KEY, STL
18	1	010110	1/4" SQUARE X 1-1/4" L, MACHINE KEY, STL
17	2	010156	1/4" MALE NPT, SCKT PIPE PLUG, 3/4 TAPER, STL
16	2	010126	1/4-20 X 1/4", SCKT. SET SCR, CUP PT, BLK. OXIDE
15	2	010127	1/4-20 X 1/2", SCKT. SET SCR, CUP PT, BLK. OXIDE
14	2	010114	1/4-20 X 1/2", HHCS, GR. 5, ZP
13	2	010138	1/2", SPLIT LOCK WASHER, ZP
12	4	010132	1/2", FLAT WASHER, SAE, ZP
11	2	010158	1/2" X 2-1/2", DETENT RING PIN
10	6	010140	1/2-13, HEX NUT, GR. A, ZP
9	4	010143	1/2-13, ACORN NUT, NICKEL PLT
8	6	010120	1/2-13 X 1-1/2", HHCS, GR. 5, ZP
7	1	010111-1	1/16" X 6", BARE CABLE, STEEL LANYARD
6	1	010111	1/16" X 6", BARE CABLE, STEEL LANYARD
5	3	020200	1-1/4 ID x 1-1/2 OD x 1/8 O-RING
4	4	020201	1-1/4 ID x 1-1/2 OD x .050 FLAT GASKET
3	2	030123	1-1/2", PILLLOW BLOCK BEARING
2	2	010107	1-1/2" ID, EXTERNAL SPIRAL RING, MED DUTY, STL
1	1	010134	1-1/2" ID X 3/4" W, CLAMPING COLLAR, ZP
ITEM	QTY	PART NO.	DESCRIPTION

UNLESS OTHERWISE SPECIFIED
DIMENSIONS ARE IN INCHES.
TOLERANCES ARE:
DECIMALS .01 ± .02
ANGLES .005
FRACTIONAL ± 1/16
DO NOT SCALE DRAWING

APPROVALS	DATE
EPP	12-14-12

27815 STATE ROUTE 7
MARIETTA, OHIO
45750 USA
740-374-6726

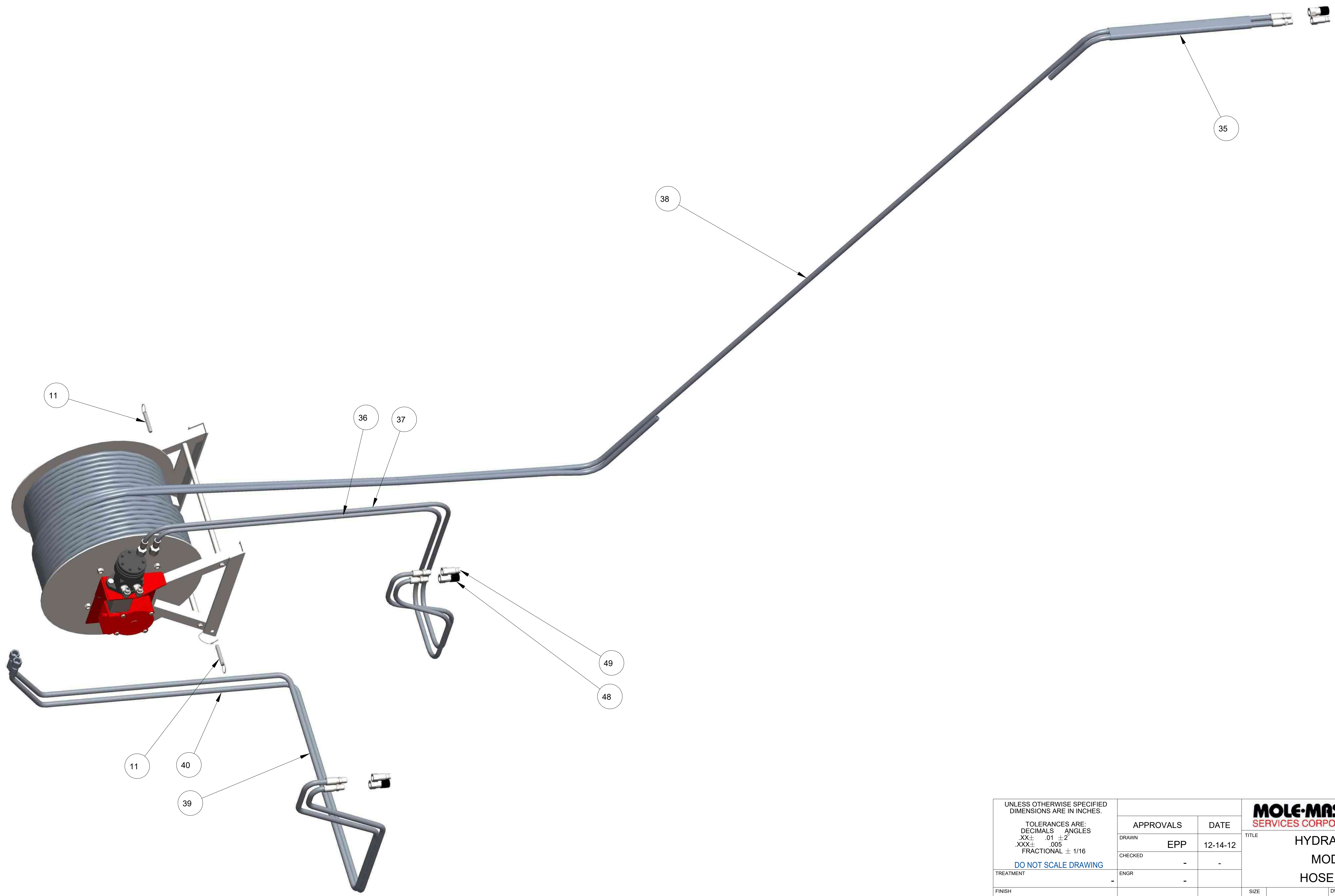
MOLE-MASTER SERVICES CORPORATION
HYDRAULIC JUNIOR 360°
MODEL NO: JR360H
HOSE REEL ASSEMBLY


REV.	DESCRIPTION	DATE	BY
A	PL3360H-2		

ITEM	QTY	PART NO.	DESCRIPTION
SEE BOM			

THIS MATERIAL IS THE PROPERTY OF MOLE MASTER SERVICES CORPORATION AND MAY NOT BE REPRODUCED, PUBLISHED, OR DISCLOSED TO OTHERS WITHOUT WRITTEN AUTHORIZATION AND MAY NOT BE USED IN ANY WAY AGAINST OR DETRIMENTAL TO MOLE MASTER SERVICES CORPORATION.

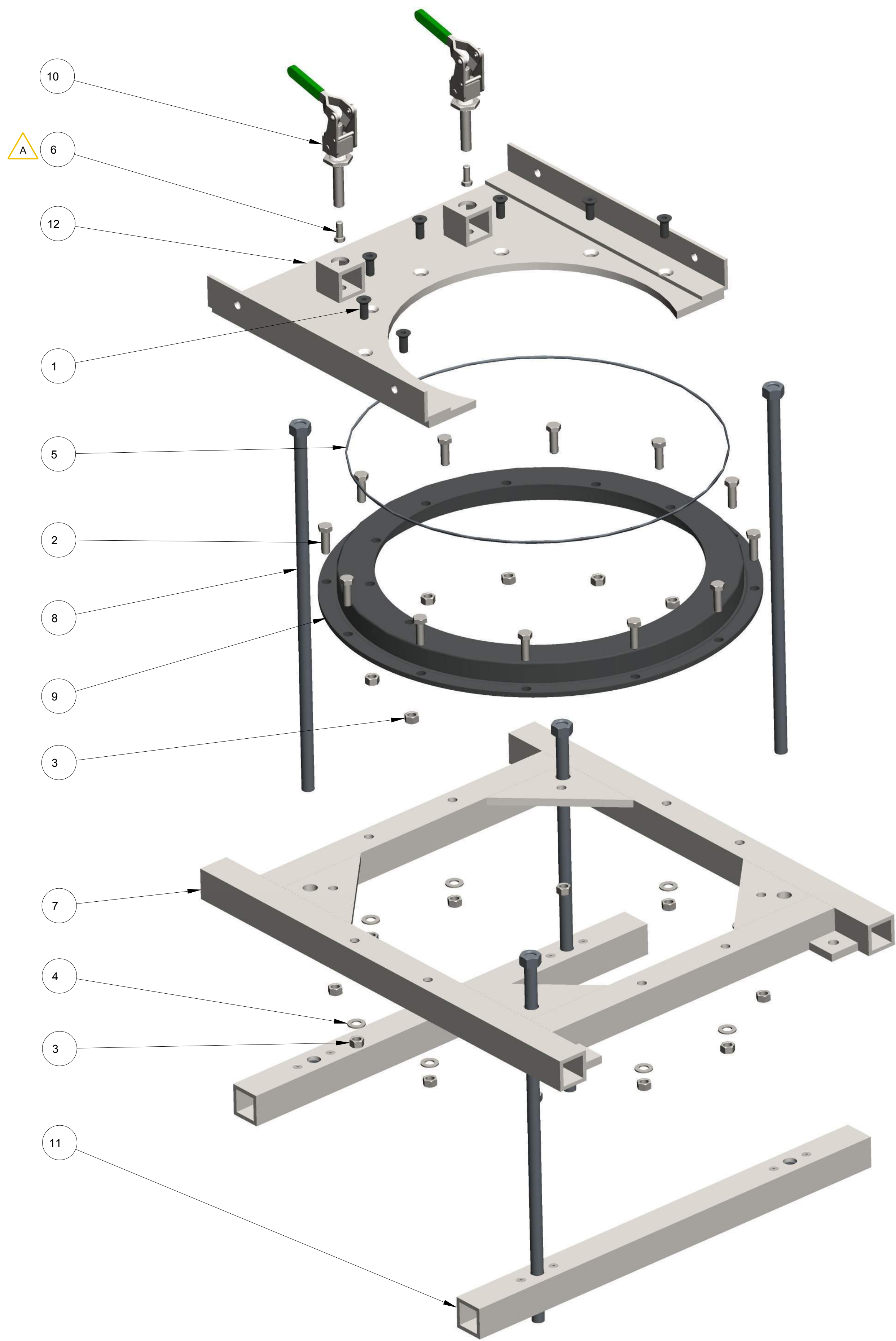
REVISION HISTORY			
REV	DESCRIPTION	DATE	BY
A	ADDED 030141	03-07-16	EPP




UNLESS OTHERWISE SPECIFIED DIMENSIONS ARE IN INCHES.		APPROVALS		DATE			27815 STATE ROUTE 7 MARIETTA, OHIO 45750 USA 740-374-6726	
TOLERANCES ARE: DECIMALS .XX ± .01 ± .02 .XXX ± .005 FRACTIONAL ± 1/16		DRAWN		EPP	12-14-12		TITLE	
DO NOT SCALE DRAWING		CHECKED		-	-		HYDRAULIC JUNIOR 360	
TREATMENT		ENGR		-	-		MODEL NO: JR360H	
FINISH		-		-		HOSE REEL ASSEMBLY		
MATERIAL		-		-		SIZE	DWG NO.	REV.
						D	PL3360H-2	A
						SCALE	3/20	CALC WT
						ACT WT	SHEET	2 OF 2

THIS MATERIAL IS THE PROPERTY OF MOLE MASTER SERVICES CORPORATION AND MAY NOT BE REPRODUCED, PUBLISHED, OR DISCLOSED TO OTHERS WITHOUT WRITTEN AUTHORIZATION AND MAY NOT BE USED IN ANY WAY AGAINST OR DETRIMENTAL TO MOLE MASTER SERVICES CORPORATION.

REVISION HISTORY			
REV	DESCRIPTION	DATE	BY
A	ADDED (2) 010117 TO BOM	03-12-14	EPP

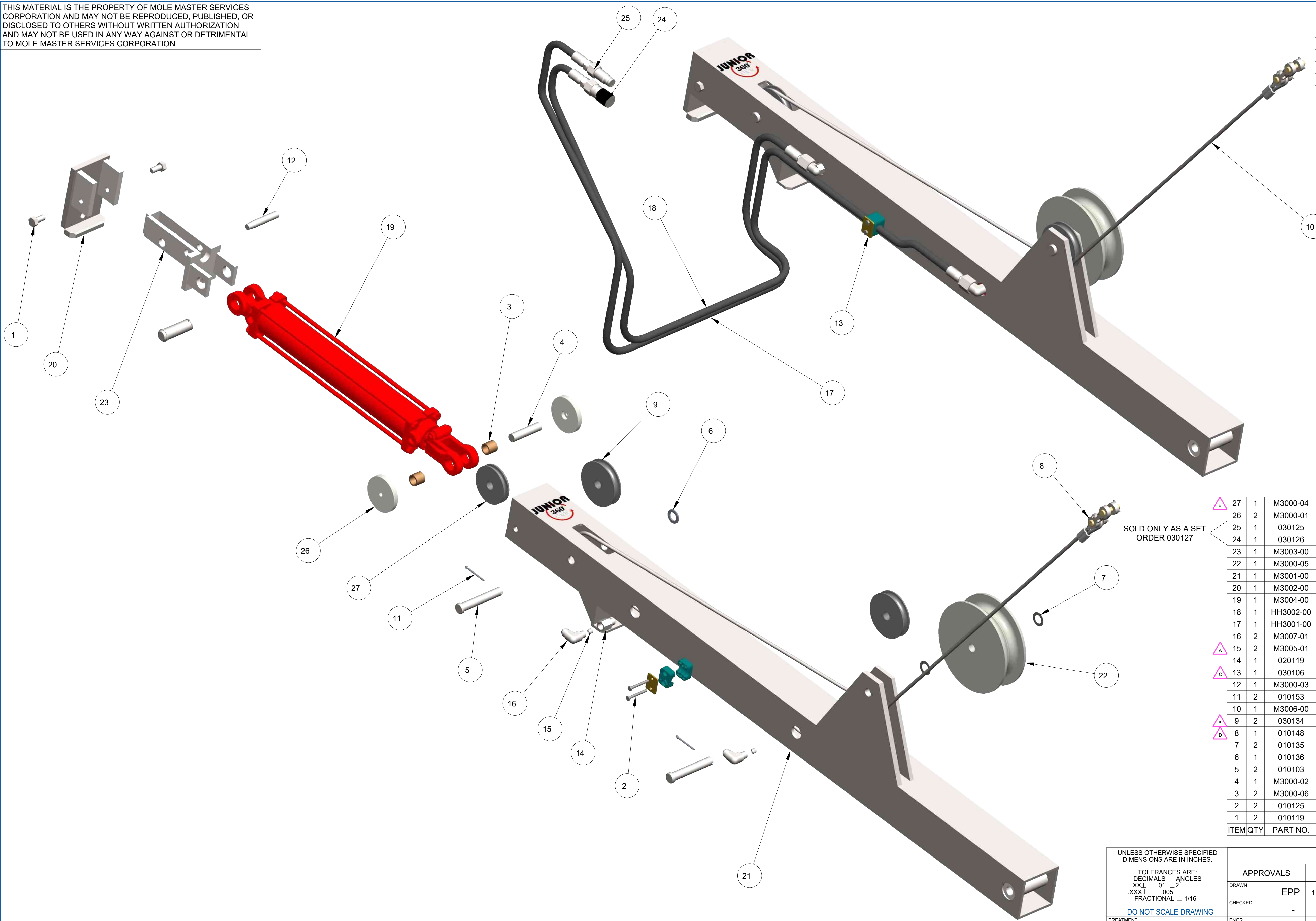


ITEM	QTY	PART NO.	DESCRIPTION
12	1	BF3001-00	UPPER SUPPORT
11	2	BF2003-00	UNDER ROOF LOCKING BAR ASSY
10	2	030107	PLUNGER TOGGLE CLAMP
9	1	4001	MAIN ROTATION BEARING
8	4	BF2004-00	LOCKING BAR ATTACHMENT BOLT
7	1	BF2002-00	BEARING SUPPORT
6	2	010117	3/8-16 X 1", HHCS, GR. 5, ZP
5	1	020205	22" ID X .210" CS BUNA O-RING, VULCANIZE
4	8	010132	1/2", FLAT WASHER, SAE, ZP
3	19	010140	1/2-13, HEX NUT, GR. A, ZP
2	12	010120	1/2-13 X 1-1/2", HHCS, GR. 5, ZP
1	7	010124	1/2-13 X 1-1/2", FHSCS, BLK. OXIDE

UNLESS OTHERWISE SPECIFIED DIMENSIONS ARE IN INCHES.		APPROVALS		DATE			27815 STATE ROUTE 7 MARIETTA, OHIO 45750 USA 740-374-6726	
TOLERANCES ARE: DECIMALS ANGLES .XX± .01 ±2° .XXX± .005 FRACTIONAL ± 1/16		EPP		12-14-12	TITLE HYDRAULIC JUNIOR 360 MODEL NO: JR360H BEARING FRAME ASSEMBLY		DWG NO. PL3360H-3	
DO NOT SCALE DRAWING		ENGR			SIZE D		REV. A	
TREATMENT		ENGR			SCALE 1/4		SHEET 1 OF 1	
FINISH		ENGR			SCALE 1/4		SHEET 1 OF 1	
MATERIAL		ENGR			SCALE 1/4		SHEET 1 OF 1	
SEE BOM		ENGR			SCALE 1/4		SHEET 1 OF 1	

THIS MATERIAL IS THE PROPERTY OF MOLE MASTER SERVICES CORPORATION AND MAY NOT BE REPRODUCED, PUBLISHED, OR DISCLOSED TO OTHERS WITHOUT WRITTEN AUTHORIZATION AND MAY NOT BE USED IN ANY WAY AGAINST OR DETRIMENTAL TO MOLE MASTER SERVICES CORPORATION.

REVISION HISTORY			
REV	DESCRIPTION	DATE	BY
A	M3007-01 WAS 020100	03-05-14	EPP
B	CREATED M3006-00, CABLE ASSEMBLY	11-30-15	EPP
C	ADDED 020119 TO BOM	12-09-16	EPP
D	MOVED 010148 FROM JB3000-00	07-22-19	EPP
E	RVSD DESCRIPTION OF M3000-04	01-08-20	EPP



ITEM	QTY	PART NO.	DESCRIPTION
27	1	M3000-04	SHEAVE, 3-1/2"OD, 3/8" ROPE, 3/4" BUSHING
26	2	M3000-01	ROLLER
25	1	030125	QUICK COUPLING, MALE END, 1/2" FEMALE PIPE
24	1	030126	QUICK COUPLING, FEMALE END, 1/2" FEMALE PIPE
23	1	M3003-00	PULLEY/CYLINDER MOUNT
22	1	M3000-05	PULLEY, DOUBLE SPOOL
21	1	M3001-00	MAST TUBE
20	1	M3002-00	MAST TOP CAP WELDMENT
19	1	M3004-00	HYDRAULIC TIE-ROD CYLINDER
18	1	HH3002-00	HOSE ASSY, #6M3K, (1) 6G-8FJX, (1) 6G-8MP, 160" CUT LGTH
17	1	HH3001-00	HOSE ASSY, #6M3K, (1) 6G-8FJX, (1) 6G-8MP, 140" LGTH
16	2	M3007-01	8MJ-6MP90, MODIFIED MALE JIC-MALE PIPE 90° ELBOW
15	2	M3005-01	7/16-20 X 3/8" SOCKET HD SET SCREW W/ ORFICE
14	1	020119	6MP-6FPL, MAPLE PIPE-FEMALE PIPE LONG HYD ADAPTER
13	1	030106	5/8" TUBE CLAMP
12	1	M3000-03	5/8" OD TAPERED DOWEL PIN
11	2	010153	5/32" x 2", COTTER PIN, ZP
10	1	M3006-00	5/16" GALV AIRCRAFT CABLE ASSEMBLY, 165" LG
9	2	030134	4" OD, 1/2" ROPE SHEEVE WITH 3/4" BUSHING
8	1	010148	3/8" CHAIN, DOUBLE CLEVIS LINK, ZP
7	2	010135	3/4", MACHINERY BUSHING, 18 GA., PLN FIN
6	1	010136	3/4", MACHINERY BUSHING, 10 GA., PLN FIN
5	2	010103	3/4" X 4-1/2", CLEVIS PIN, ZP
4	1	M3000-02	3/4" x 3-1/8" STEEL DOWEL PIN, ZP
3	2	M3000-06	3/4" ID x 1" OD x 15/16" LG, BUSHING, BRONZE
2	2	010125	1/4-20 X 2", HHCS, GR. 5, ZP
1	2	010119	1/2-13 X 1", HHCS, GR. 5, ZP

UNLESS OTHERWISE SPECIFIED DIMENSIONS ARE IN INCHES.
 TOLERANCES ARE:
 DECIMALS ANGLES
 .XX± .01 ±2°
 .XXX± .005
 FRACTIONAL ± 1/16
 DO NOT SCALE DRAWING

APPROVALS	DATE
DRAWN	
CHECKED	
ENGR	

27815 STATE ROUTE 7
 MARIETTA, OHIO
 45750 USA
 740-374-6726

MOLE-MASTER SERVICES CORPORATION

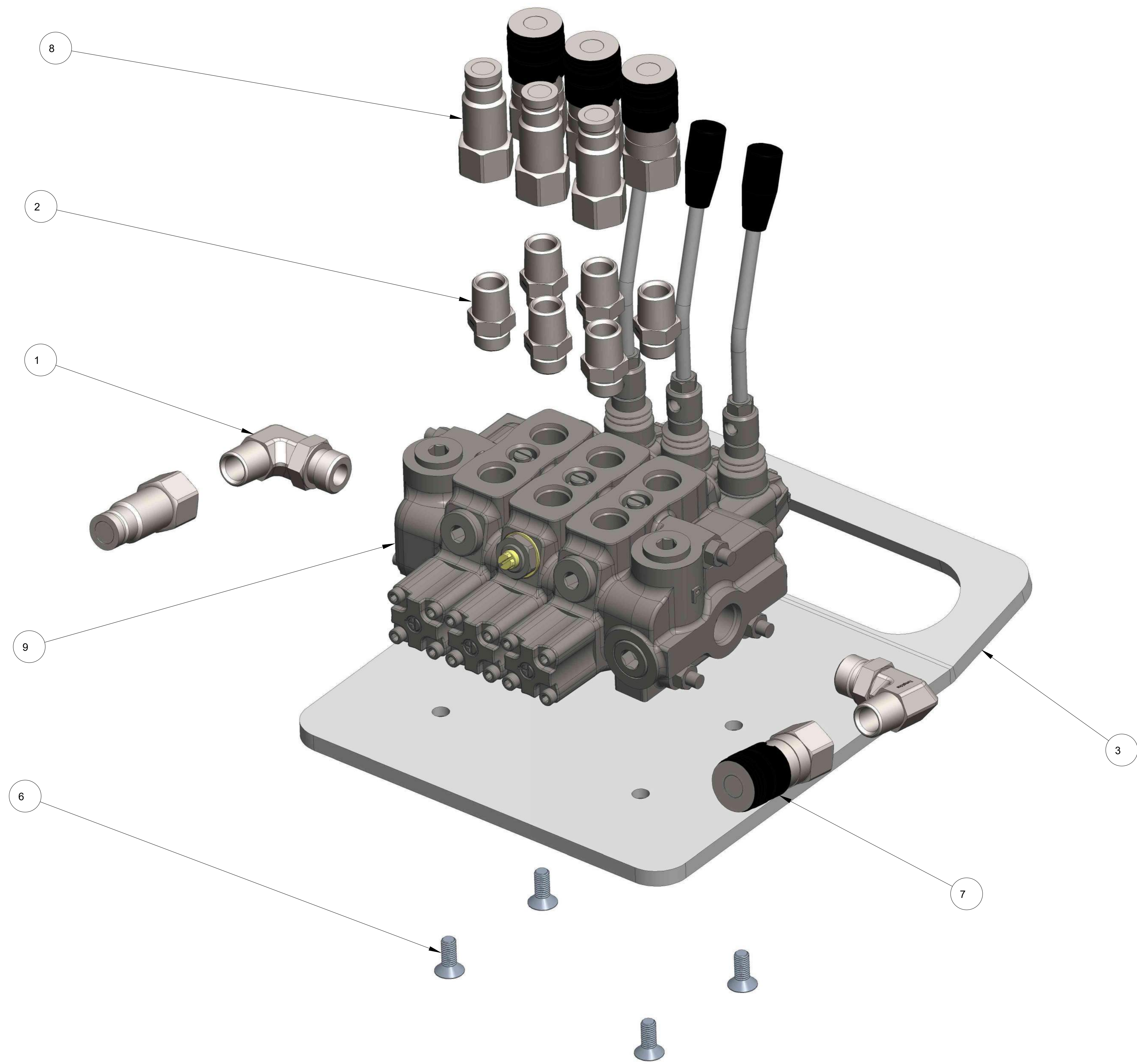
TITLE: **HYDRAULIC JUNIOR 360**
MODEL NO: JR360H
MAST ASSEMBLY

SIZE: **D** DWG NO. **PL3360H-4** REV. **E**

SCALE: 1/4" = 1" SHEET 1 OF 1

THIS MATERIAL IS THE PROPERTY OF MOLE MASTER SERVICES CORPORATION AND MAY NOT BE REPRODUCED, PUBLISHED, OR DISCLOSED TO OTHERS WITHOUT WRITTEN AUTHORIZATION AND MAY NOT BE USED IN ANY WAY AGAINST OR DETRIMENTAL TO MOLE MASTER SERVICES CORPORATION.

REVISION HISTORY			
REV	DESCRIPTION	DATE	BY
A	VALVE RVSD FROM PARKER TO YOULI	01-08-20	EPP



NOTE:
 1. HYDRAULIC HOSE ASSEMBLIES ARE NOT SHOWN FOR CLARITY.
 2. QUICK COUPLINGS THAT CONNECT TO HYDRAULIC HOSES ARE NOT SHOWN FOR CLARITY

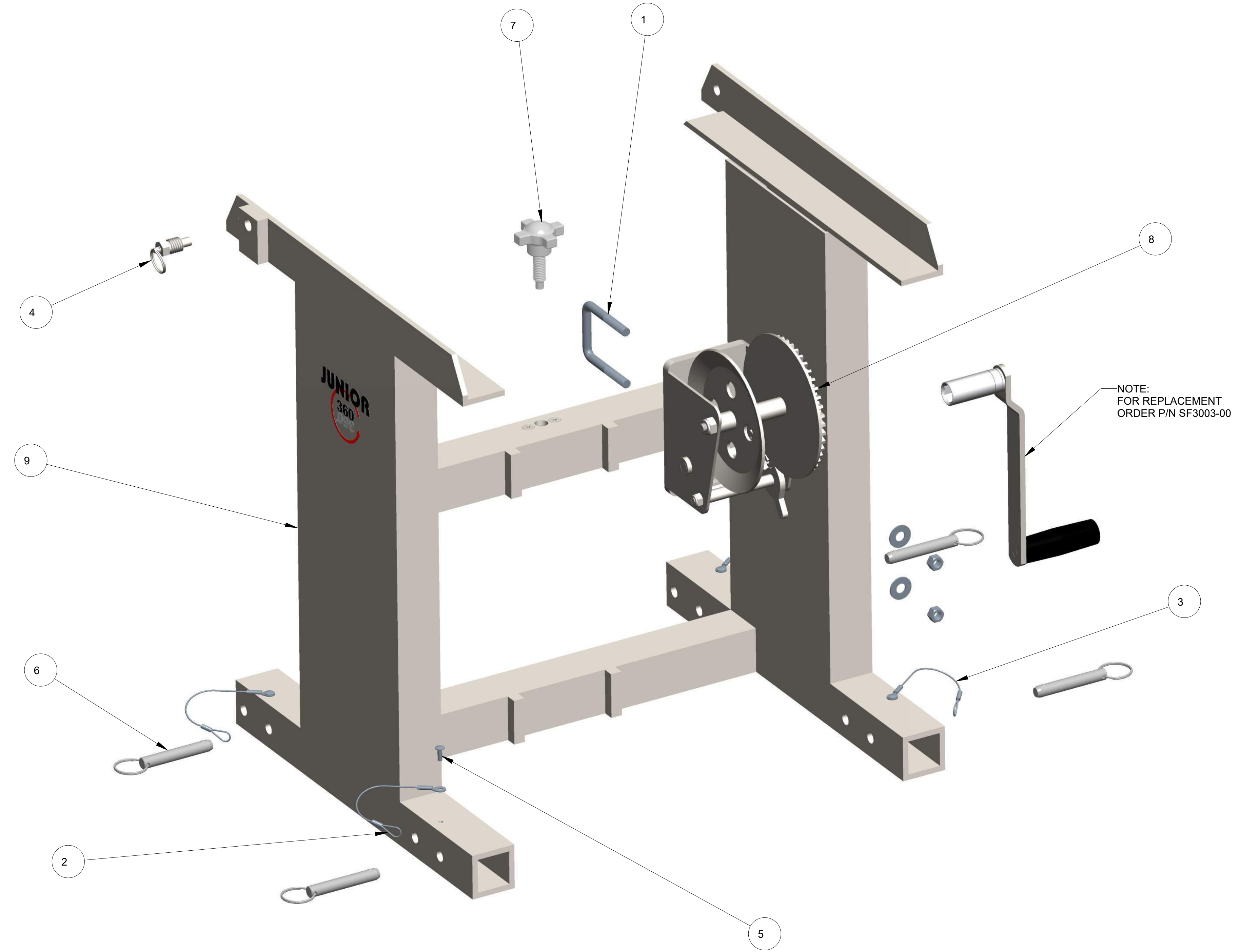
SOLD ONLY AS A SET
 ORDER 030127

ITEM	QTY	PART NO.	DESCRIPTION
9	1	030152	YOULI 3-SPOOL CONTROL VALVE
8	6	030125	QUICK COUPLING, MALE END, 1/2" FEMALE PIPE
7	6	030126	QUICK COUPLING, FEMALE END, 1/2" FEMALE PIPE
6	4	010160	M8 X 1.25 X 20mm FHMS, ZP
5	1	HH0120-1	HOSE ASSY,#8M3K,(2) 8GE-8MP, 120" LGTH
4	1	HH0120-1	HOSE ASSY,#8M3K,(2) 8GE-8MP, 120" LGTH
3	1	CV3200-01	CONTROL VALVE MOUNTING PLATE
2	6	020109	8MB-8MP, MALE O RING BOSS-MALE PIPE THREAD HYD ADAPTER
1	2	050109	10MB-8MP90, MALE O RING BOSS-MALE PIPE 90 D ELBOW HYD ADAPT

UNLESS OTHERWISE SPECIFIED DIMENSIONS ARE IN INCHES.		APPROVALS		DATE			27815 STATE ROUTE 7 MARIETTA, OHIO 45750 USA 740-374-6726	
TOLERANCES ARE: DECIMALS .01 ± 2" .XX ± .01 ± 2" .XXX ± .005 FRACTIONAL ± 1/16		DRAWN		EPP	TITLE		HYDRAULIC JUNIOR 360	
DO NOT SCALE DRAWING		CHECKED		-	SIZE		D	
TREATMENT		ENGR		-	DWG NO.		PL3360H-5	
FINISH		MATERIAL		SEE BOM	SCALE		3/4	
					SHEET		1 OF 1	

THIS MATERIAL IS THE PROPERTY OF MOLE MASTER SERVICES CORPORATION AND MAY NOT BE REPRODUCED, PUBLISHED, OR DISCLOSED TO OTHERS WITHOUT WRITTEN AUTHORIZATION AND MAY NOT BE USED IN ANY WAY AGAINST OR DETRIMENTAL TO MOLE MASTER SERVICES CORPORATION.

REVISION HISTORY			
REV	DESCRIPTION	DATE	BY
A	RVSD BOM. CREATED SF3010-00 WELDMENT	10-19-15	EPP
B	MADE HANDLE PART OF WINCH ASSY	01-08-20	EPP

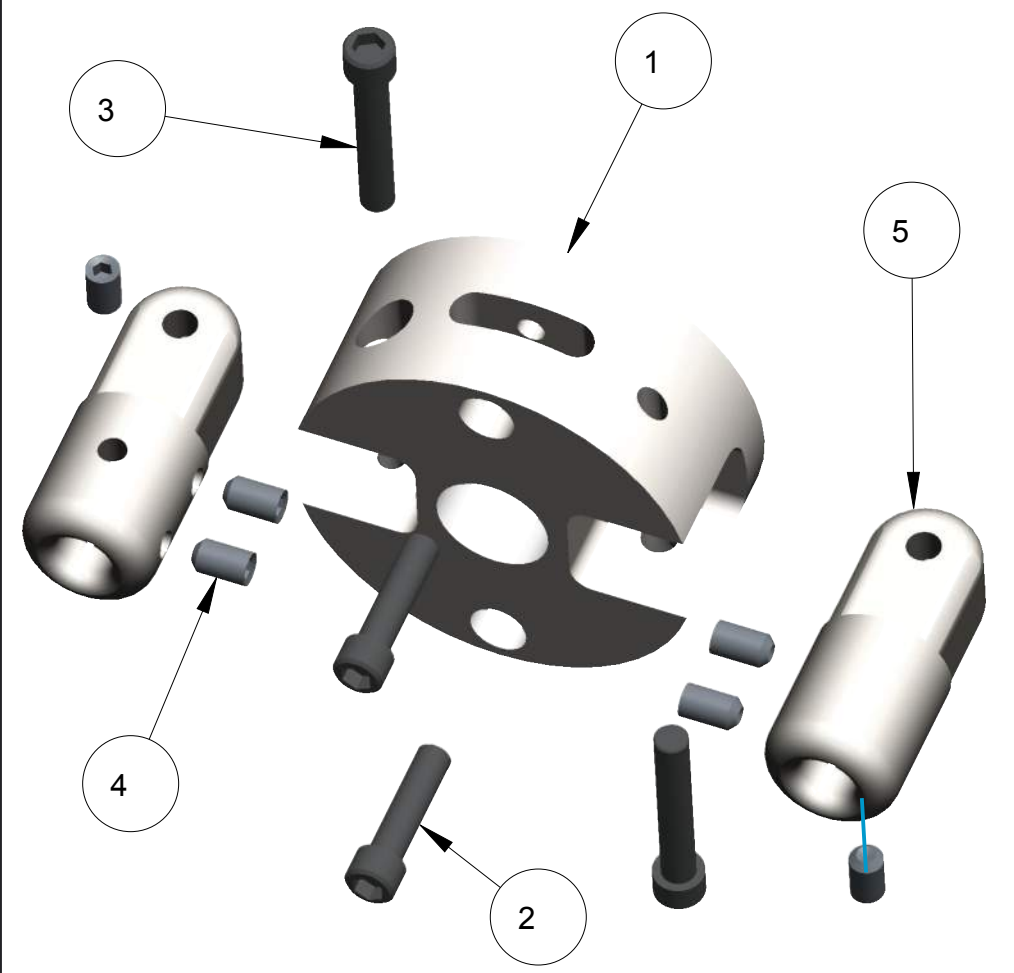


ITEM	QTY	PART NO.	DESCRIPTION
9	1	SF3010-00	UPPER SUPPORT FRAME WELDMENT
8	1	SF3002-00	MODIFIED WINCH ASSEMBLY
7	1	090107	1/2-13 x 1-1/2", HAND KNOB
6	4	010158	1/2" X 2-1/2", DETENT RING PIN
5	4	010113	3/16", BLIND POP-RIVET, BUTTON HEAD, ALUM
4	1	010112	5/8-11, HEX PULL PIN
3	2	010111	1/16" X 6", BARE CABLE, STEEL LANYARD
2	2	010111	1/16" X 6", BARE CABLE, STEEL LANYARD
1	1	010101	3/8-16 X 2" X 3", U-BOLT, ZP

UNLESS OTHERWISE SPECIFIED DIMENSIONS ARE IN INCHES.		APPROVALS		DATE			27815 STATE ROUTE 7 MARIETTA, OHIO 45750 USA 740-374-6726	
TOLERANCES ARE: DECIMALS .XX ± .01 ± .02 .XXX ± .005 FRACTIONAL ± 1/16		EPP		12-14-12	TITLE		HYDRAULIC JUNIOR 360	
DO NOT SCALE DRAWING		CHECKED		-	DWG NO.		PL3360H-6	
TREATMENT		ENGR		-	SIZE	REV.		B
FINISH		MATERIAL		SEE BOM	SCALE	SHEET		1 OF 1

THIS MATERIAL IS THE PROPERTY OF MOLE MASTER SERVICES CORPORATION AND MAY NOT BE REPRODUCED, PUBLISHED, OR DISCLOSED TO OTHERS WITHOUT WRITTEN AUTHORIZATION AND MAY NOT BE USED IN ANY WAY AGAINST OR DETRIMENTAL TO MOLE MASTER SERVICES CORPORATION.

REVISION HISTORY			
REV	DESCRIPTION	DATE	BY
A	ADDED (2) 020207	02-25-14	EPP
B	ADDED (1) CH3007-00, REMOVED (1) 020204	02-19-15	EPP
C	ADDED MANIFOLD, CARTRIDGE, AND FITTINGS	03-04-16	EPP

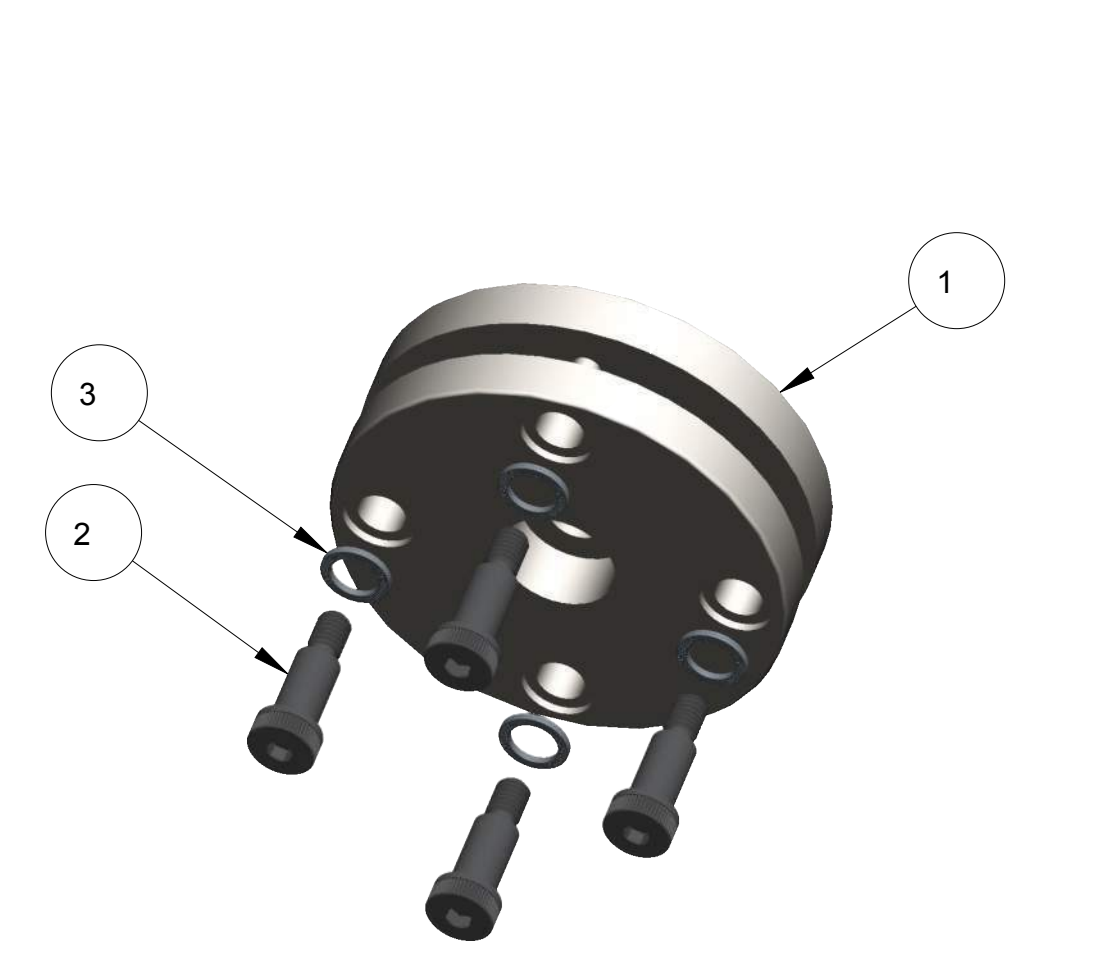


CH3007-00 (2 CHAIN & 2 WHIP CUTTER HEAD ASSEMBLY)

ITEM	QTY	PART NO.	DESCRIPTION
5	2	CH3007-02	WHIP CUTTER ATTACHMENT HOUSING
4	6	010100	3/8-16 X 5/8", SCKT. SET SCR, BRS
3	2	010122	3/8-16 X 2-1/4", SHCS, BLK. OXIDE
2	2	010121	3/8-16 X 1-1/2", SHCS, BLK. OXIDE
1	1	CH3007-01	2 CHAIN & 2 WHIP CUTTER HEAD

ITEM QTY PART NO. DESCRIPTION

BILL OF MATERIALS

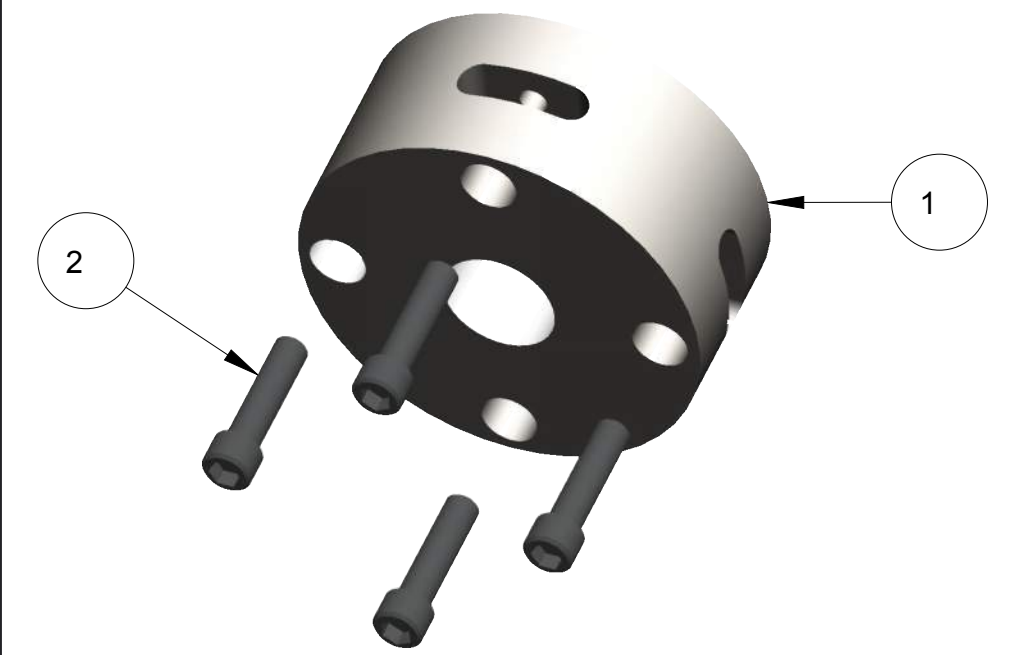


CH3008-00 (4 CHAIN STEEL CUTTER HEAD ASSEMBLY)

ITEM	QTY	PART NO.	DESCRIPTION
3	4	010106	1/2", NORD-LOCK WASHER, ZINC-FLAKE
2	4	010129	1/2 X 1", SCKT SHLDR. SCR, 3/8-16 THD
1	1	CH3008-01	4 CHAIN STEEL CUTTER HEAD

ITEM QTY PART NO. DESCRIPTION

BILL OF MATERIALS

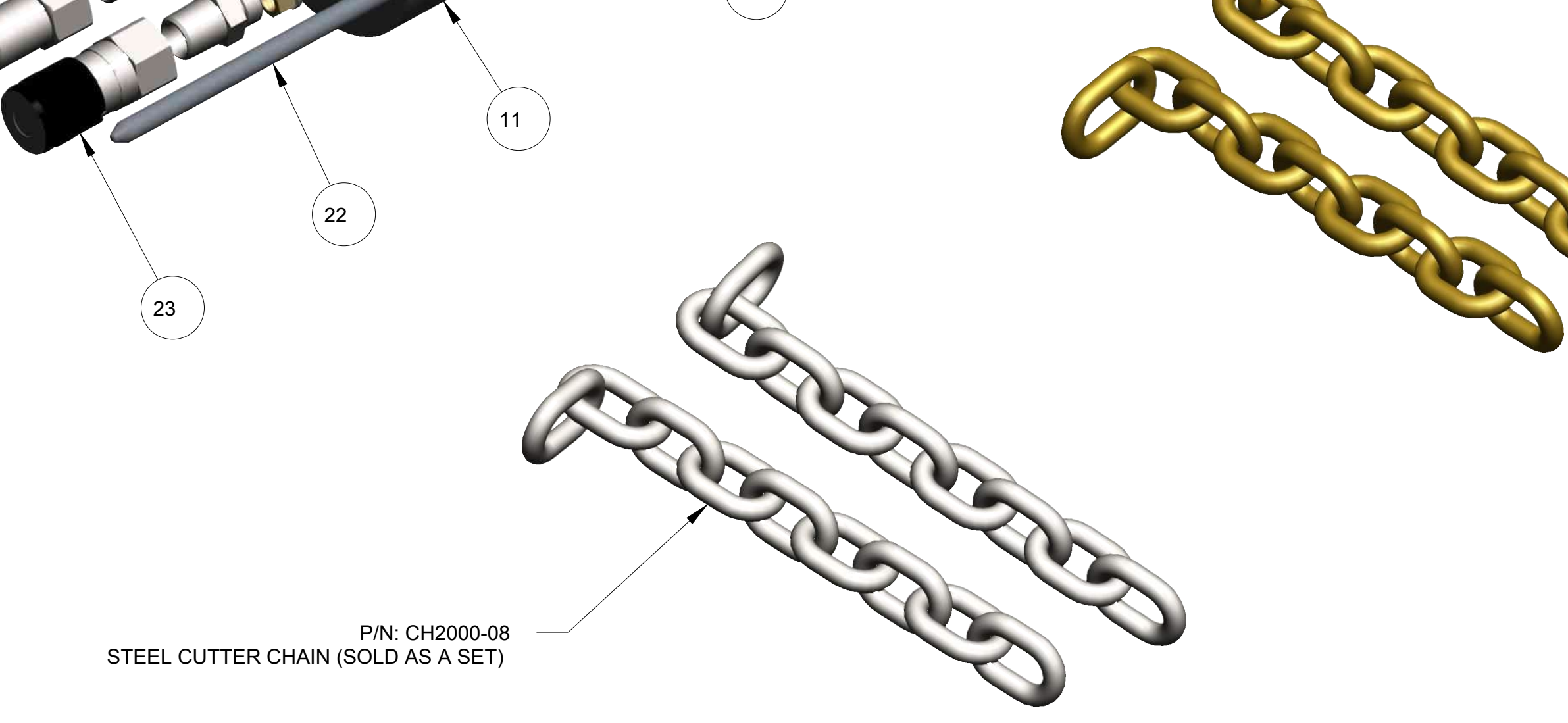
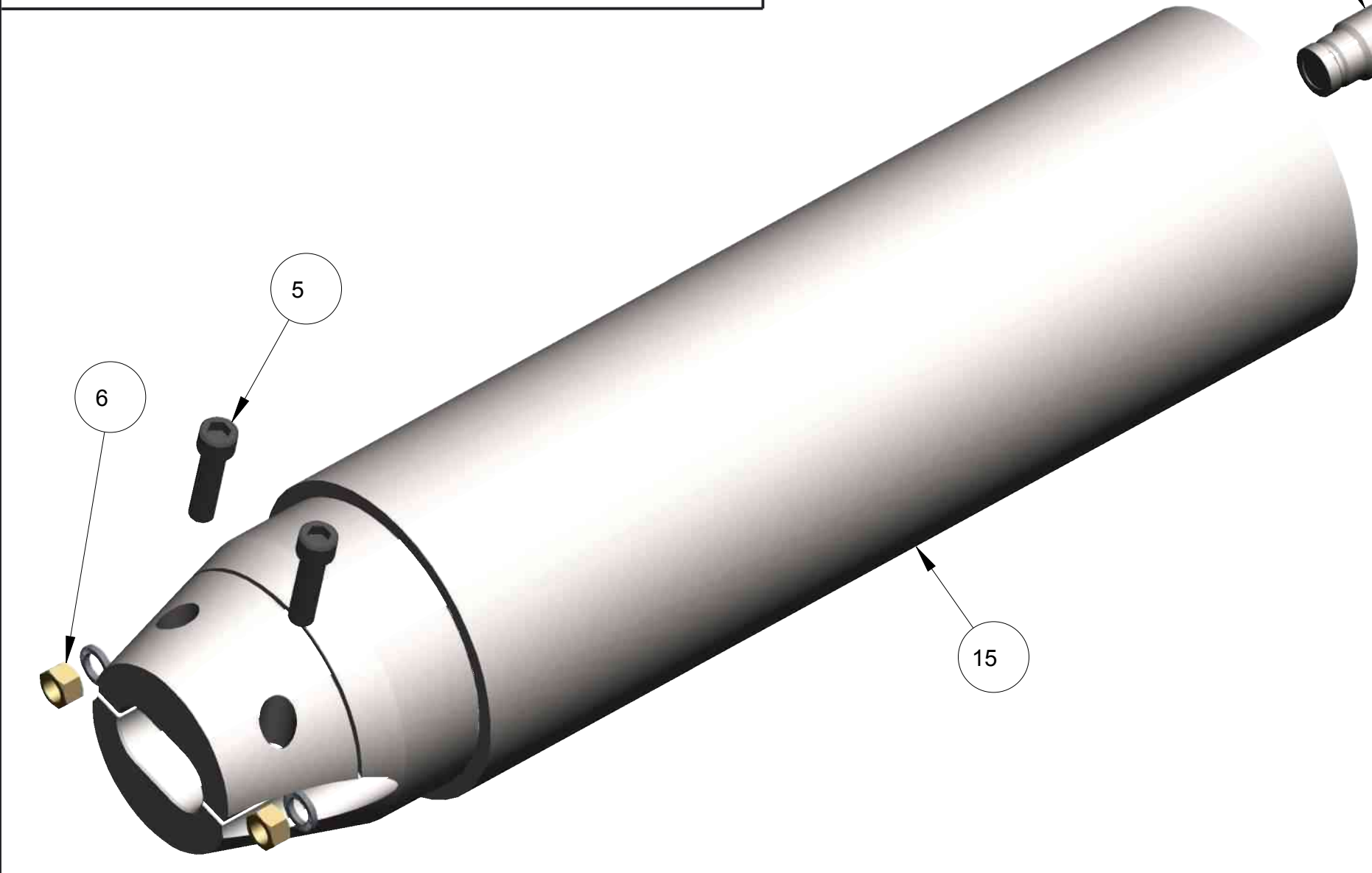
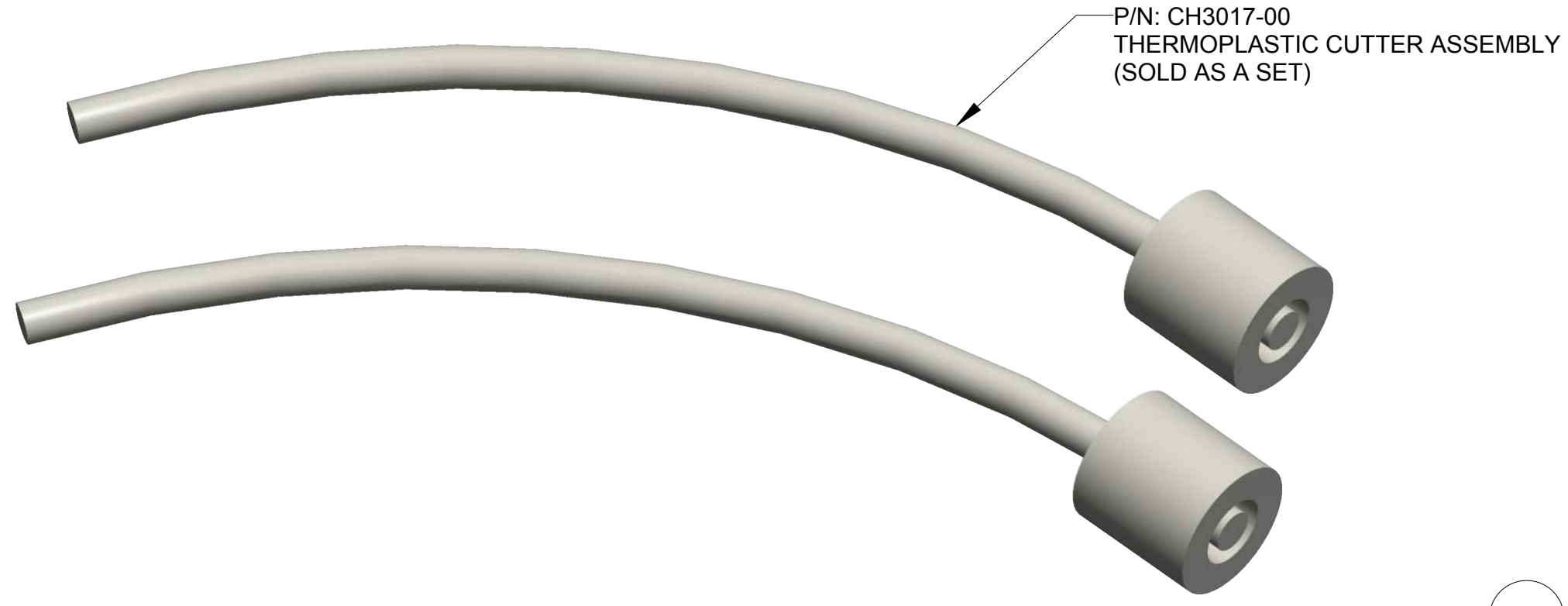


CH3003-00 (4 CHAIN CUTTER HEAD ASSEMBLY)

ITEM	QTY	PART NO.	DESCRIPTION
2	4	010121	3/8-16 X 1-1/2", SHCS, BLK. OXIDE
1	1	CH3003-01	4 CHAIN CUTTER HEAD

ITEM QTY PART NO. DESCRIPTION

BILL OF MATERIALS



SOLD ONLY AS A SET
ORDER 030127

ITEM	QTY	PART NO.	DESCRIPTION
24	1	030125	QUICK COUPLING, MALE END, 1/2" FEMALE PIPE
23	1	030126	QUICK COUPLING, FEMALE END, 1/2" FEMALE PIPE
22	2	CH3005-01	OUTER HOUSING ATTACHING ROD
21	1	CH3009-01	MOTOR MOUNT
20	1	CH3001-01	MOTOR HOUSING
19	4	CH3012-01	MODIFIED, 8MB-PLUG
18	2	CH3021-01	MODIFIED, 8MB-6MJ
17	2	CH3011-01	MODIFIED, 6MB-6MJ
16	1	CH3004-01	HYDRAULIC MOTOR
15	1	CH3002-00	COUNTER WEIGHT HOUSING WELDMENT
14	3	CH3006-01	COUNTER WEIGHT CONNECTING ROD
13	1	CH3010-01	COUNTER WEIGHT
12	1	030146	CHECK VALVE CARTRIDGE, 5 PSI
11	1	030145	ANTI-CAVATATION MANIFOLD
10	2	020109	8MB-8MP, MALE O RING BOSS-MALE PIPE THREAD HYD ADAPTER
9	4	020207	7/16" ID X 11/16" OD X 1/8" WIDE VITON O-RING
8	3	020204	4" ID X 4-3/8" OD X 3/16" BUNA O-RING
7	5	010105	3/8", NORD-LOCK WASHER, ZINC-FLAKE
6	5	010104	3/8-24, HEX NUT, GR. 5, YZ
5	2	010121	3/8-16 X 1-1/2", SHCS, BLK. OXIDE
4	5	010123	1/4-28 X 3/4", FHSCS, BLK. OXIDE
3	1	010132	1/2", FLAT WASHER, SAE, ZP
2	1	010142	1/2-20, HEX SLOTTED NUT, PLN FIN
1	1	CH3007-00	2 CHAIN & 2 WHIP CUTTER HEAD ASSY

ITEM QTY PART NO. DESCRIPTION

BILL OF MATERIALS

UNLESS OTHERWISE SPECIFIED
DIMENSIONS ARE IN INCHES.

TOLERANCES ARE:
DECIMALS ANGLES
.XX± .01 ±2°
.XXX± .005
FRACTIONAL ± 1/16

DO NOT SCALE DRAWING

TREATMENT -

FINISH -

MATERIAL - SEE BOM

APPROVALS	DATE
EPP	12-14-12

DRAWN - EPP

CHECKED -

ENGR -

27815 STATE ROUTE 7
MARIETTA, OHIO
45750 USA
740-374-6726

MOLE-MASTER
SERVICES CORPORATION

TITLE: HYDRAULIC JUNIOR 360
MODEL NO: JR360H
CUTTING HEAD ASSEMBLY

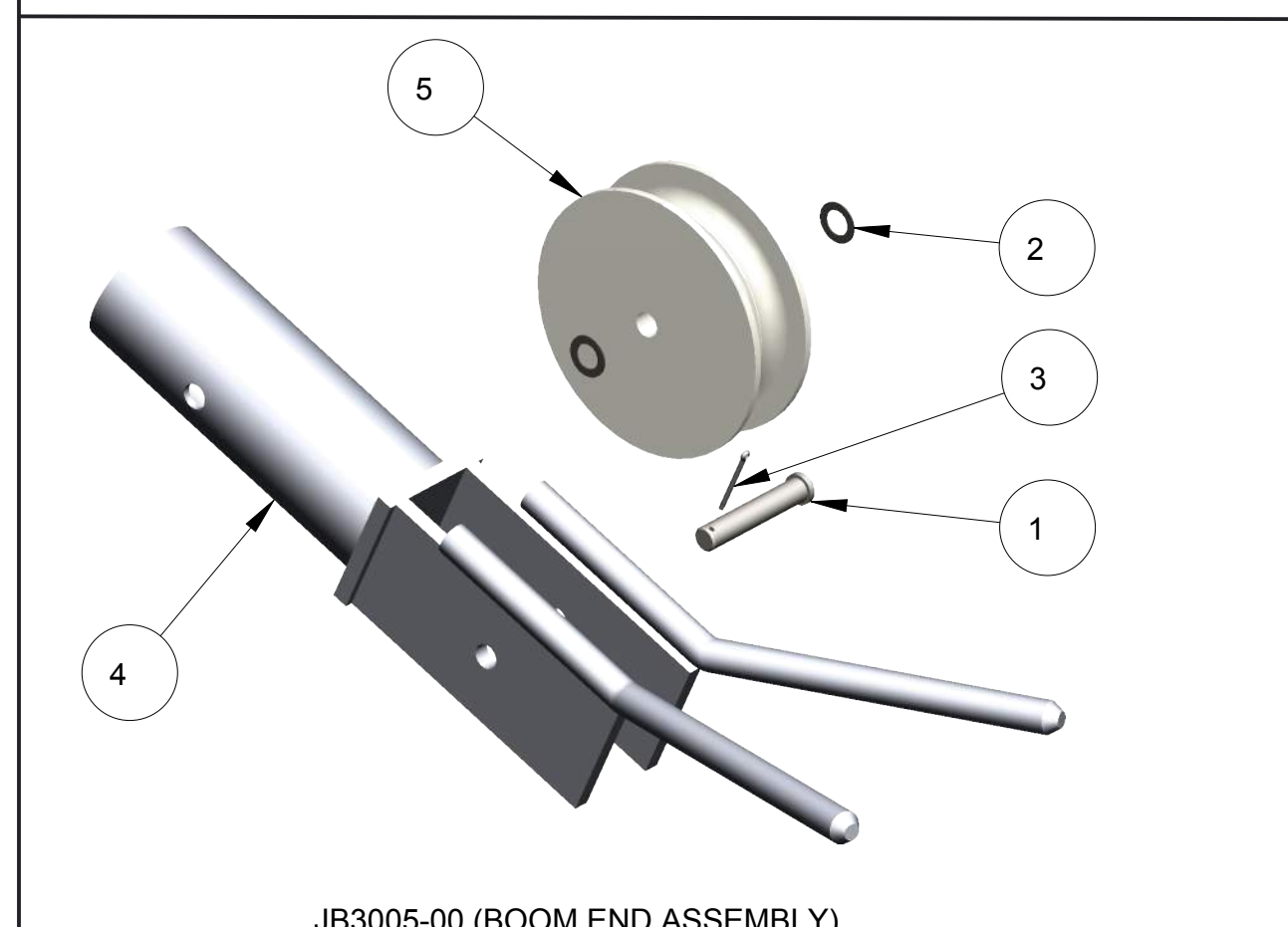
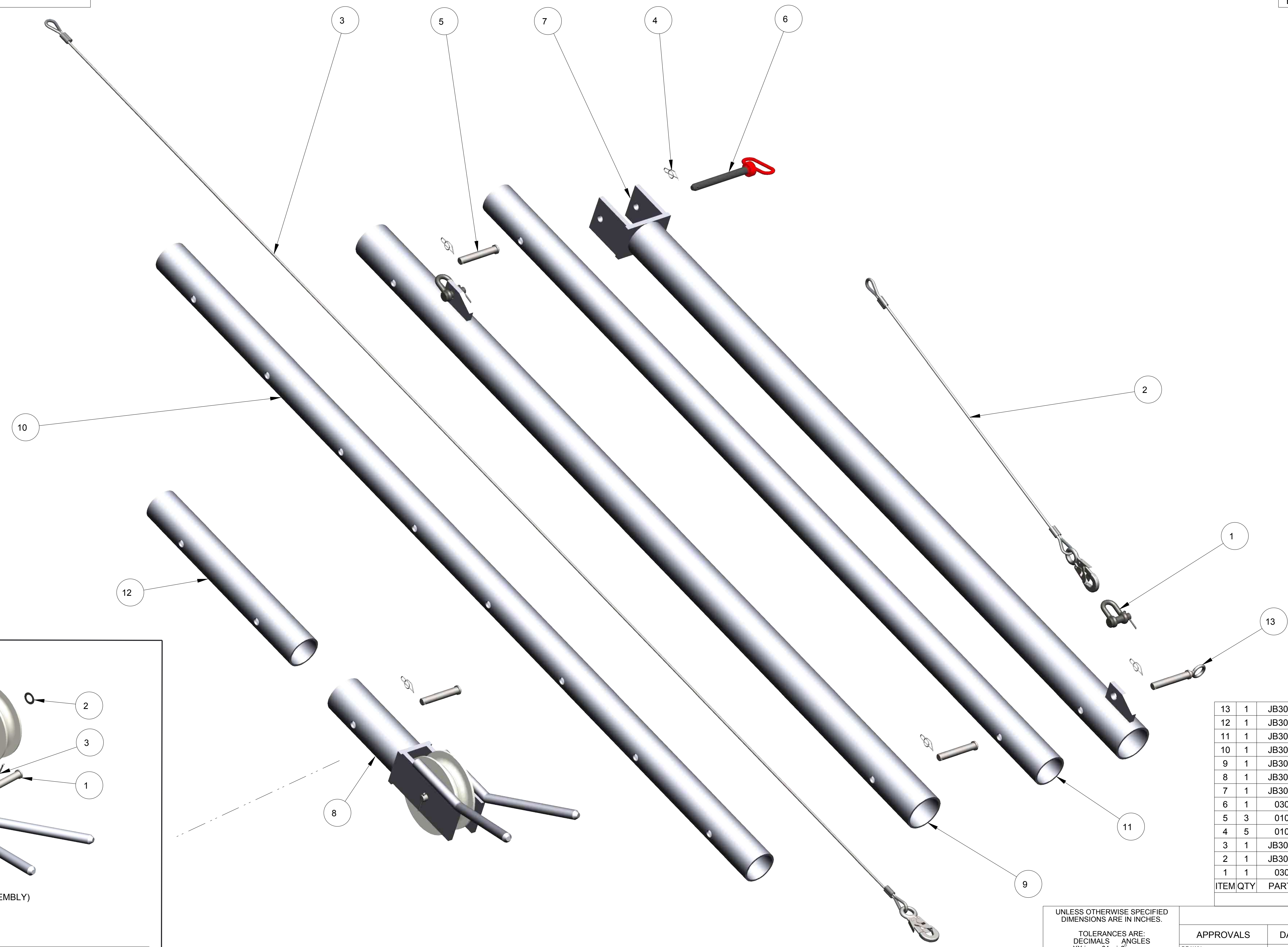
SIZE: D DWG NO. PL3360H-7 REV. C

SCALE: 1/2

SHEET 1 OF 1

THIS MATERIAL IS THE PROPERTY OF MOLE MASTER SERVICES CORPORATION AND MAY NOT BE REPRODUCED, PUBLISHED, OR DISCLOSED TO OTHERS WITHOUT WRITTEN AUTHORIZATION AND MAY NOT BE USED IN ANY WAY AGAINST OR DETRIMENTAL TO MOLE MASTER SERVICES CORPORATION.

REVISION HISTORY			
REV	DESCRIPTION	DATE	BY
A	RVSD JB3005-00 BOM	02-15-16	EPP
B	MOVED 010148 TO M3000-00	07-22-19	EPP



JB3005-00 (BOOM END ASSEMBLY)

ITEM	QTY	PART NO.	DESCRIPTION
13	1	JB3008-00	EYE BOLT CLEVIS PIN
12	1	JB3006-01	BOOM EXTENSION
11	1	JB3004-01	BOOM EXTENSION
10	1	JB3003-01	BOOM EXTENSION
9	1	JB3002-00	BOOM EXTENSION
8	1	JB3005-00	BOOM END ASSEMBLY
7	1	JB3001-00	BOOM
6	1	030105	3/4" x 6-1/2" VINYL COATED HITCH PIN
5	3	010103	3/4" X 4-1/2", CLEVIS PIN, ZP
4	5	010159	3/4" SHAFT, RUE RING LOCKING COTTER PIN
3	1	JB3009-00	1/4" GALV AIRCRAFT CABLE ASSEMBLY 138-3/4" LG
2	1	JB3007-00	1/4" GALV AIRCRAFT CABLE ASSEMBLY 50-1/4" LG
1	1	030124	1/2" ROUND PIN CHAIN SHACKLE

ITEM	QTY	PART NO.	DESCRIPTION
5	1	M3000-05	PULLEY, DOUBLE SPOOL
4	1	JB3015-00	BOOM END WELDMENT
3	1	010153	5/32" x 2", COTTER PIN, ZP
2	2	010135	3/4", MACHINERY BUSHING, 18 GA., PLN FIN
1	1	010102	3/4" X 4", CLEVIS PIN, ZP

BILL OF MATERIALS

UNLESS OTHERWISE SPECIFIED DIMENSIONS ARE IN INCHES.

TOLERANCES ARE:
 DECIMALS .01 ± .02
 ANGLES .XX ± .05
 FRACTIONAL ± 1/16

DO NOT SCALE DRAWING

TREATMENT: - ENGR

FINISH: -

MATERIAL: SEE BOM

APPROVALS	DATE
EPP	03-12-13
CHECKED	-
ENGR	-

SCALE: 3/16

27815 STATE ROUTE 7
 MARIETTA, OHIO
 45750 USA
 740-374-6726

MOLE-MASTER SERVICES CORPORATION

TITLE: HYDRAULIC JUNIOR 360
 MODEL NO: JR360H
 BOOM ASSEMBLY

DWG NO. PL3360H-8

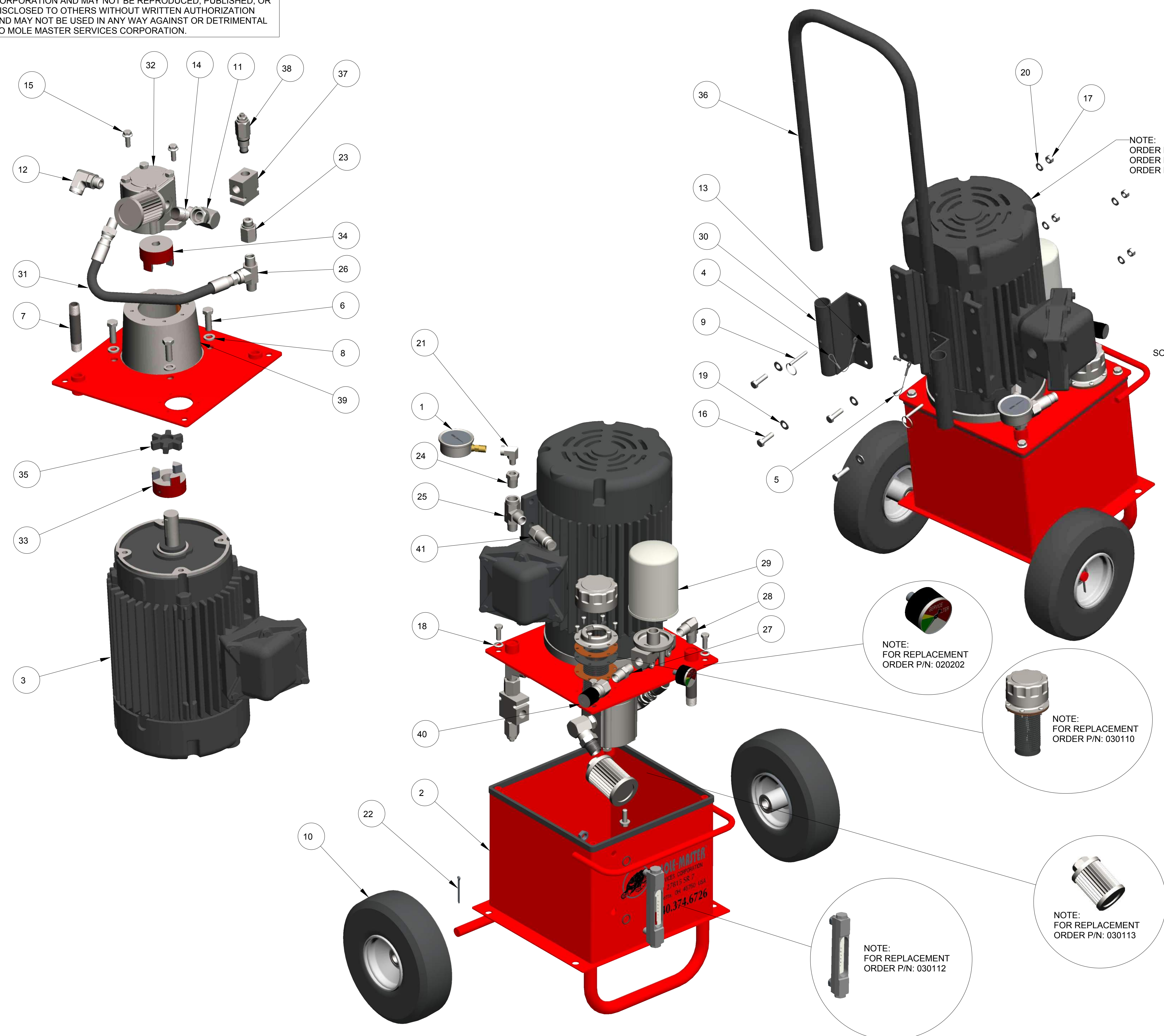
REV. B

SCALE: 3/16

CALC WT: - ACT WT: - SHEET: 1 OF 1

THIS MATERIAL IS THE PROPERTY OF MOLE MASTER SERVICES CORPORATION AND MAY NOT BE REPRODUCED, PUBLISHED, OR DISCLOSED TO OTHERS WITHOUT WRITTEN AUTHORIZATION AND MAY NOT BE USED IN ANY WAY AGAINST OR DETRIMENTAL TO MOLE MASTER SERVICES CORPORATION.

REVISION HISTORY			
REV	DESCRIPTION	DATE	BY
A	040102 WAS 010117	05-15-14	EPP
B	050102 WAS 020101, 050105 WAS 020103	05-30-14	EPP
C	REPLACED 030103 & 030104 WITH 030148	03-29-17	EPP



NOTE:
 ORDER P/N: 030115 FOR EXPLOSION PROOF AC MOTOR
 ORDER P/N: 030139 FOR 200 & 575 VOLT ELECTRIC AC MOTOR
 ORDER P/N: 030140 FOR 380 VOLT EXPLOSION PROOF MOTOR

SOLD ONLY AS A SET
 ORDER 030127

ITEM	QTY	PART NO.	DESCRIPTION
41	1	030125	QUICK COUPLING, MALE END, 1/2" FEMALE PIPE
40	1	030126	QUICK COUPLING, FEMALE END, 1/2" FEMALE PIPE
39	1	030111	PUMP MOUNT FOR ELECTRIC MOTOR
38	1	030128	PRESSURE RELIEF CARTRIDGE
37	1	030129	PRESSURE RELIEF BODY
36	1	PU3001-01	POWER UNIT HANDLE
35	1	030119	LOVEJOY-SPIDER COUPLING-L099/L100SOX
34	1	030120	LOVEJOY COUPLER-L099X5/8HUB3/16
33	1	030121	LOVEJOY COUPLER-L099X1 1/8HUB1/4
32	1	030130	HYDRAULIC GEAR PUMP
31	1	HH3004-00	HOSE ASSY,#8M3K,(1)8GE-8MPX,(1)8GE-8MP, 18" LGTH
30	2	PU3002-00	HANDLE MOUNTING BRACKET
29	1	030122	FILTER ASSEMBLY, HYDRAULIC OIL
28	1	050105	8MP-8MP90, MALE PIPE-MALE PIPE 90 D ELBOW HYD ADAPTER
27	1	050102	8MP-8MP, MALE PIPE-MALE PIPE HEX NIPPLE
26	1	020105	8MP-8MP-8FP, MALE PIPE-MALE PIPE-FEMALE PIPE TEE HYD ADAPTER
25	1	020106	8MP-8FP-8MP, MALE PIPE-FEMALE PIPE-MALE PIPE TEE HYD ADAPTER
24	1	020102	8MP-4FP, MALE PIPE-FEMALE PIPE HEX REDUCER BUSHING HYD ADAPTER
23	1	020110	8MB-8FP, MALE O RING BOSS-FEMALE PIPE THREAD STR HYD ADAPT
22	1	010153	5/32" x 2", COTTER PIN, ZP
21	1	020104	4MP-4FP90, MALE PIPE-FEMALE 90° STREET ELBOW HYD ADAPTER
20	4	010137	3/8", SPLIT LOCK WASHER, ZP
19	4	010131	3/8", FLAT WASHER, SAE, ZP
18	4	010133	3/8", BONDED SEALING WASHER, 18-8 SS
17	4	010139	3/8-16, HEX NUT, GR. A, ZP
16	4	010118	3/8-16 X 1-1/4", HHCS, GR. 5, ZP
15	2	040102	3/8-16 X 1", FLG BOLT, SERRATTED WASHER, GR 8.2, ZP
14	1	010154	3/4" CLOSE PIPE NIPPLE, SCHD 40, STL
13	2	010113	3/16", BLIND POP-RIVET, BUTTON HEAD, ALUM
12	1	020116	10MB-8FP90, MALE O RING BOSS-FEMALE PIPE 90° ELBOW HYD ADAPTER
11	1	020118	10MB-12FPX90, MALE O RING BOSS-FEMALE PIPE SWIVEL 90° ELBOW HYD ADPT
10	2	030148	10" FLAT FREE WHEEL ASSY, 3" OFFSET
9	2	010157	1/4" X 1-1/2", DETENT RING PIN
8	4	010138	1/2", SPLIT LOCK WASHER, ZP
7	1	010149	1/2" X 4", SEAMLESS PIPE NIPPLE, SCHD 80, 3000#
6	4	010120	1/2-13 X 1-1/2", HHCS, GR. 5, ZP
5	1	010111_3	1/16" X 6", BARE CABLE, STEEL LANYARD
4	1	010111_2	1/16" X 6", BARE CABLE, STEEL LANYARD
3	1	030138	5 HP, 1750 RPM, 3PH, TEFC GENERAL PURPOSE ELECTRIC AC MOTOR
2	1	030114	5 GALLON VERTICAL HYDRAULIC RESERVOIR
1	1	020203	2-1/2"-3000 PSI GLY GAUGE, 1/4" NPT BOTTOM MOUNT

UNLESS OTHERWISE SPECIFIED DIMENSIONS ARE IN INCHES.

TOLERANCES ARE:
 DECIMALS .01 ± .002
 .XX± .005
 FRACTIONAL ± 1/16

DO NOT SCALE DRAWING

TREATMENT - ENGR

FINISH -

MATERIAL - SEE BOM

APPROVALS: EPP
 DATE: 12-14-12

SCALE: 1/4"

27815 STATE ROUTE 7
 MARIETTA, OHIO
 45750 USA
 740-374-6726

MOLE-MASTER SERVICES CORPORATION

TITLE: HYDRAULIC JUNIOR 360
 MODEL NO: JR360H
 POWER UNIT ASSEMBLY

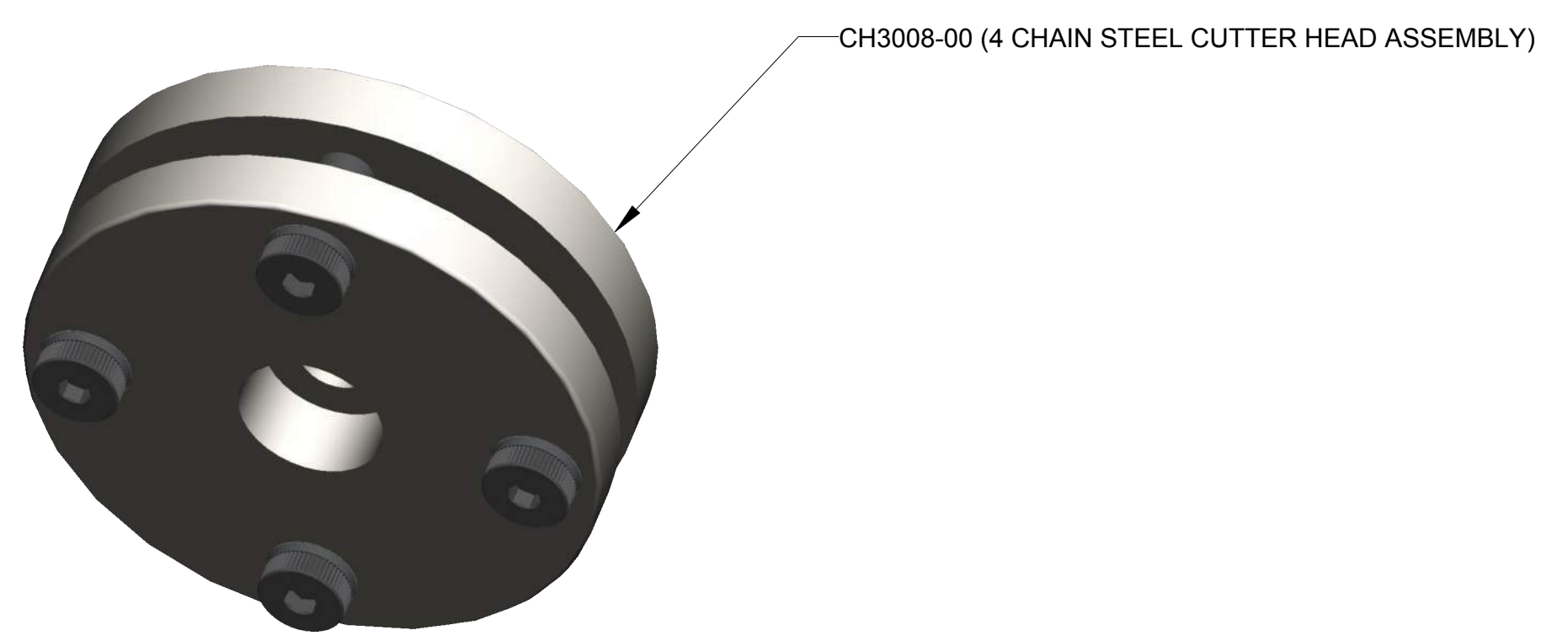
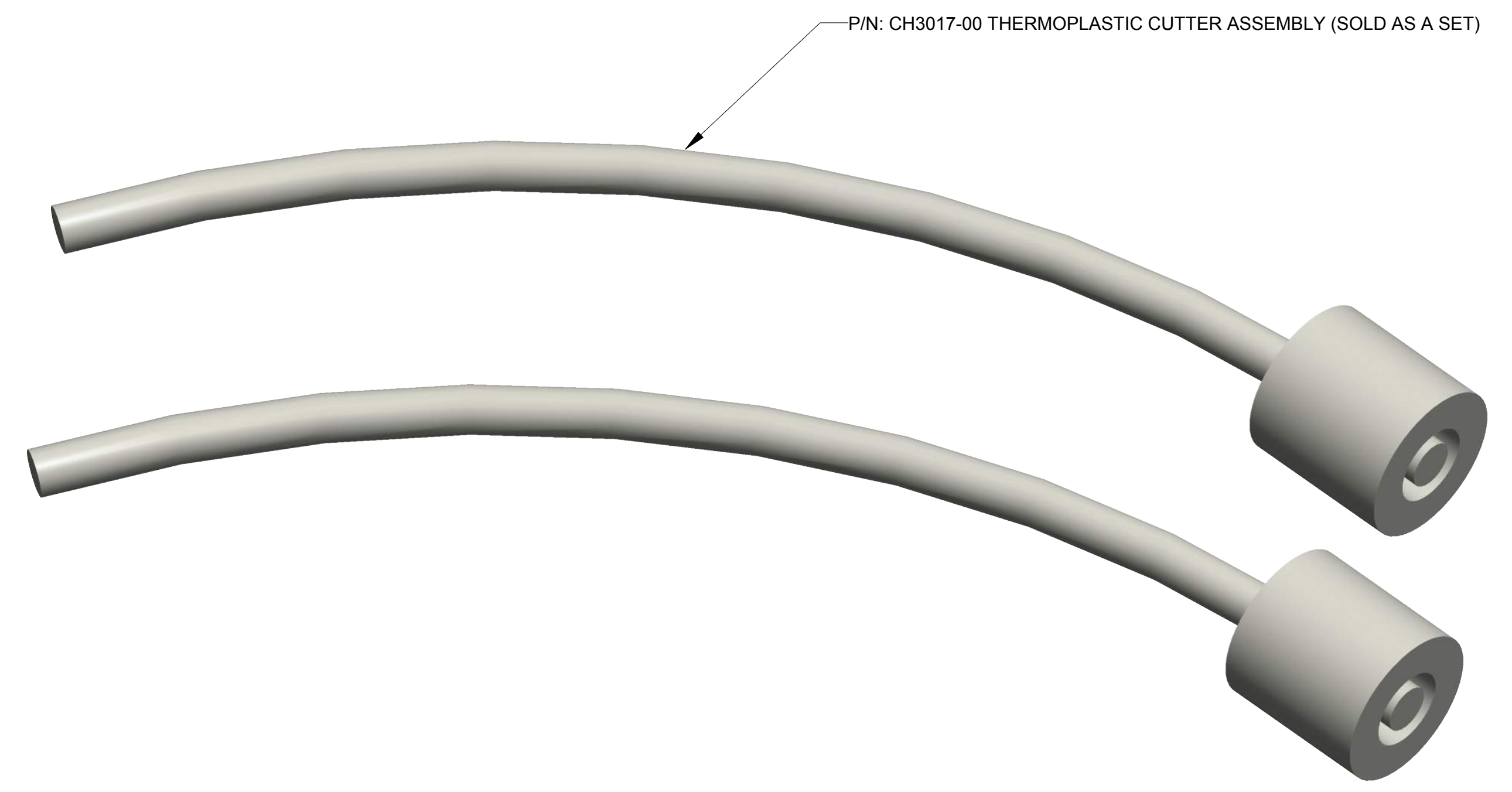
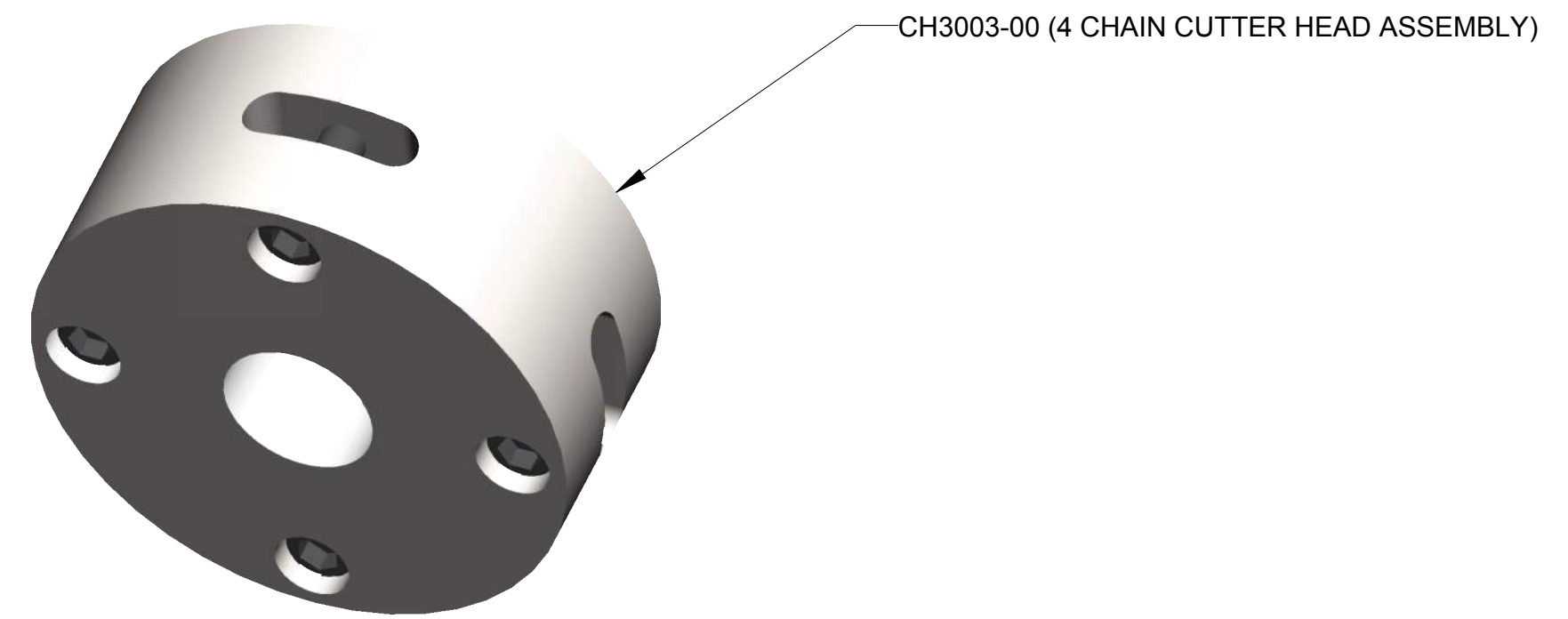
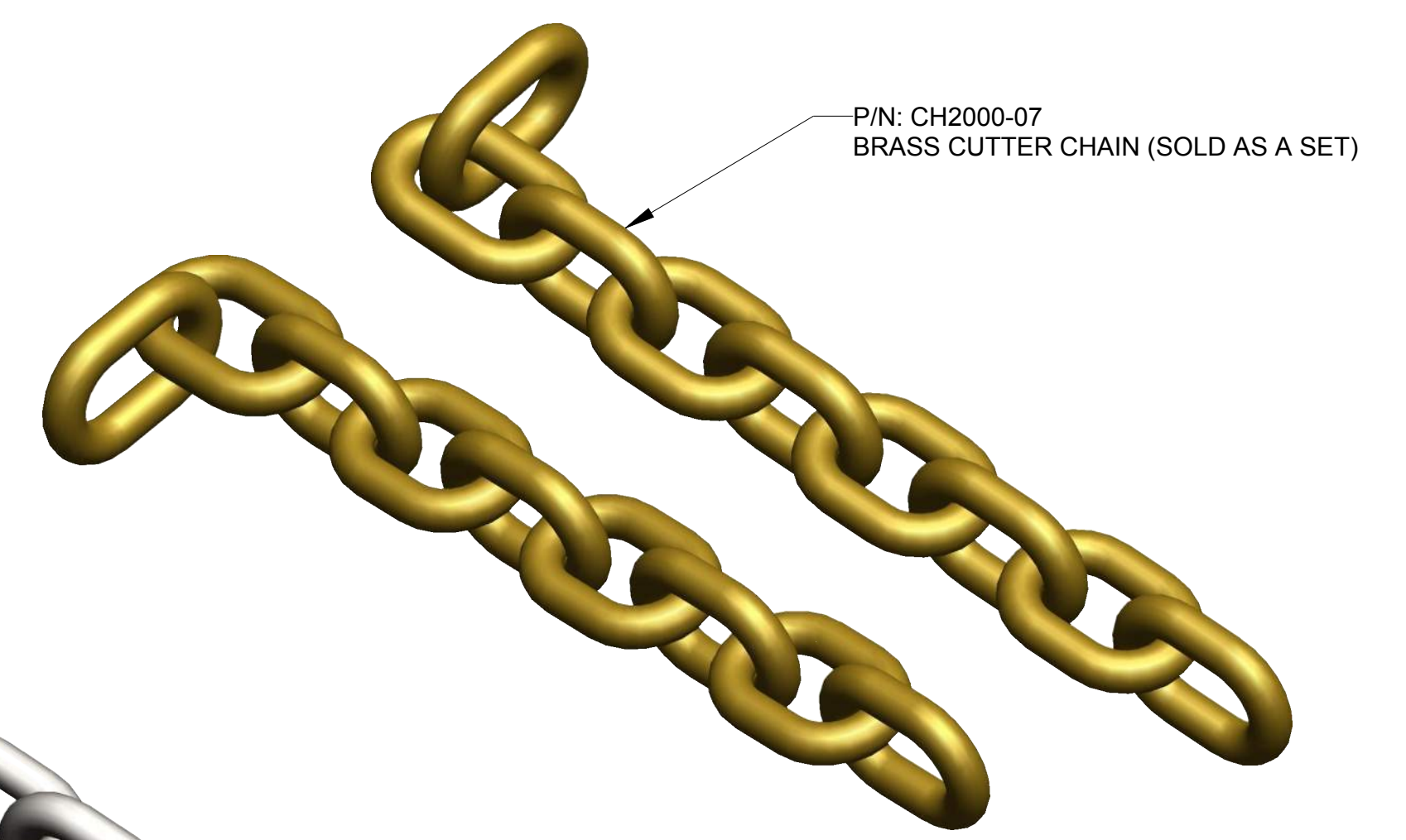
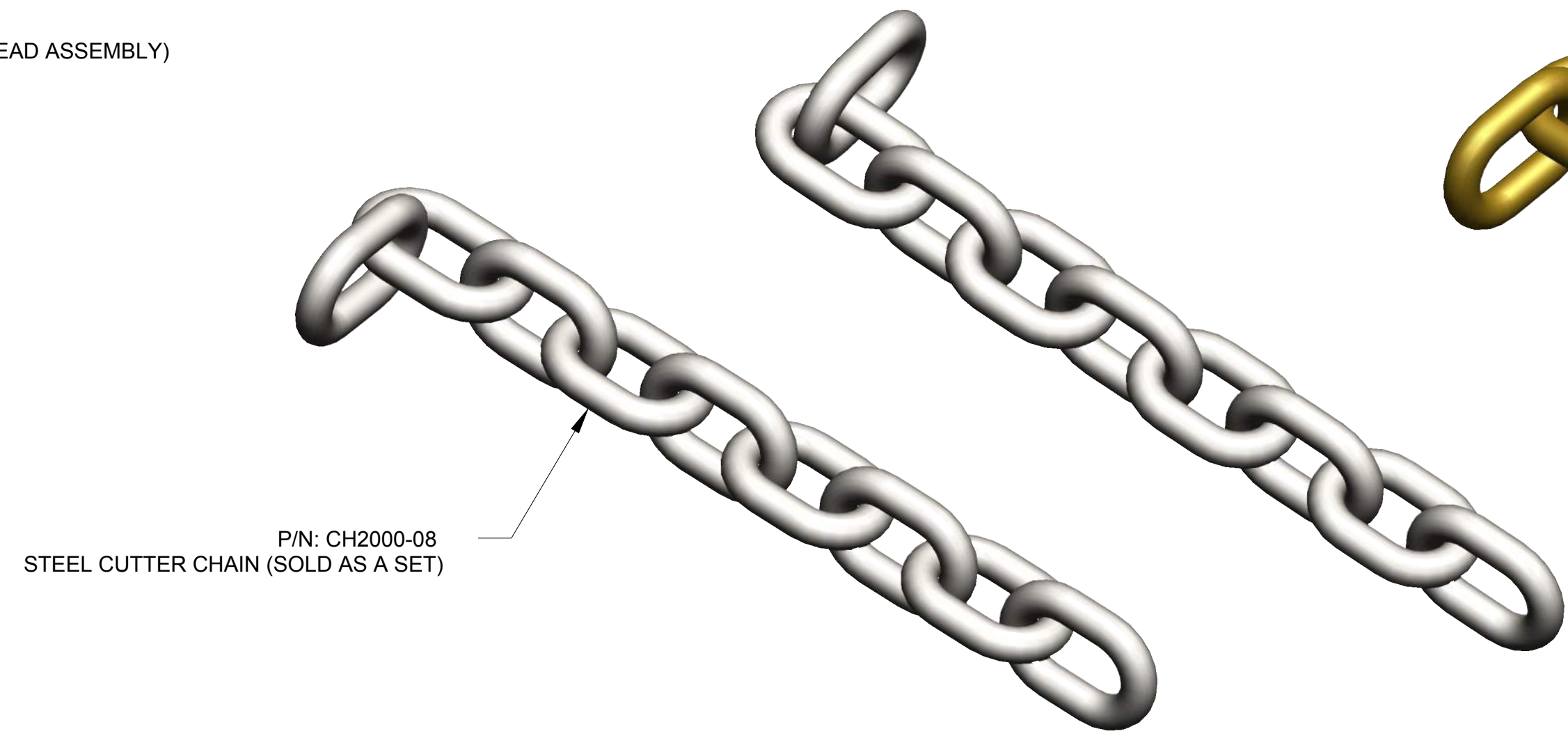
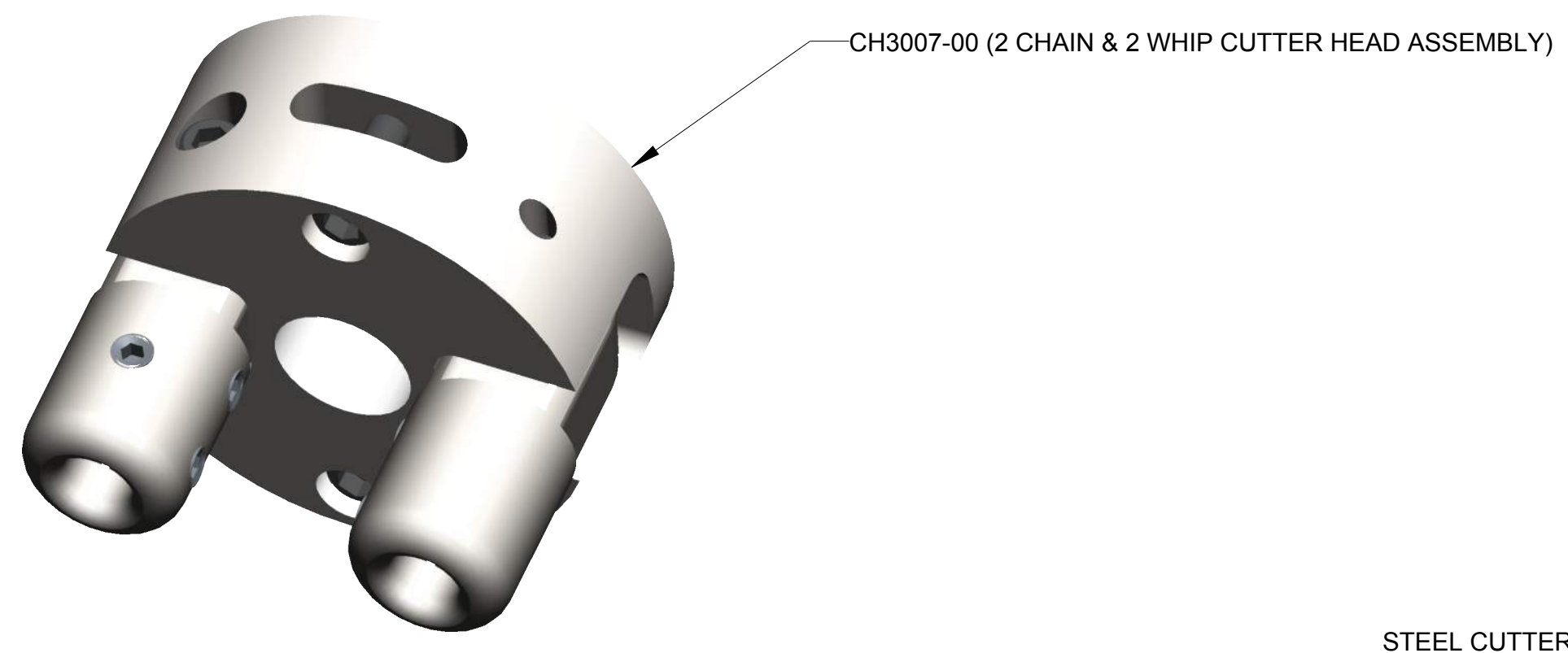
PL3360H-9

REV. C

SHEET 1 OF 1

THIS MATERIAL IS THE PROPERTY OF MOLE MASTER SERVICES CORPORATION AND MAY NOT BE REPRODUCED, PUBLISHED, OR DISCLOSED TO OTHERS WITHOUT WRITTEN AUTHORIZATION AND MAY NOT BE USED IN ANY WAY AGAINST OR DETRIMENTAL TO MOLE MASTER SERVICES CORPORATION.

REVISION HISTORY			
REV	DESCRIPTION	DATE	BY



UNLESS OTHERWISE SPECIFIED DIMENSIONS ARE IN INCHES.		APPROVALS		DATE		27815 STATE ROUTE 7 MARIETTA, OHIO 45750 USA 740-374-6728	
TOLERANCES ARE: DECIMALS ANGLES .XX± .01 ± 2° .XXX± .005 FRACTIONAL ± 1/16		DRAWN	EPP	3-14-13		TITLE	HYDRAULIC JUNIOR 360 MODEL NO: JR360H ASSESSORIES
DO NOT SCALE DRAWING		CHECKED	-	-	SIZE	DWG NO.	REV.
TREATMENT		ENGR	-	-	D	PL3360H-10	-
FINISH		MATERIAL		SCALE	1/2	CALC WT	ACT WT
SEE BOM		SHEET		1 OF 1		1 OF 1	