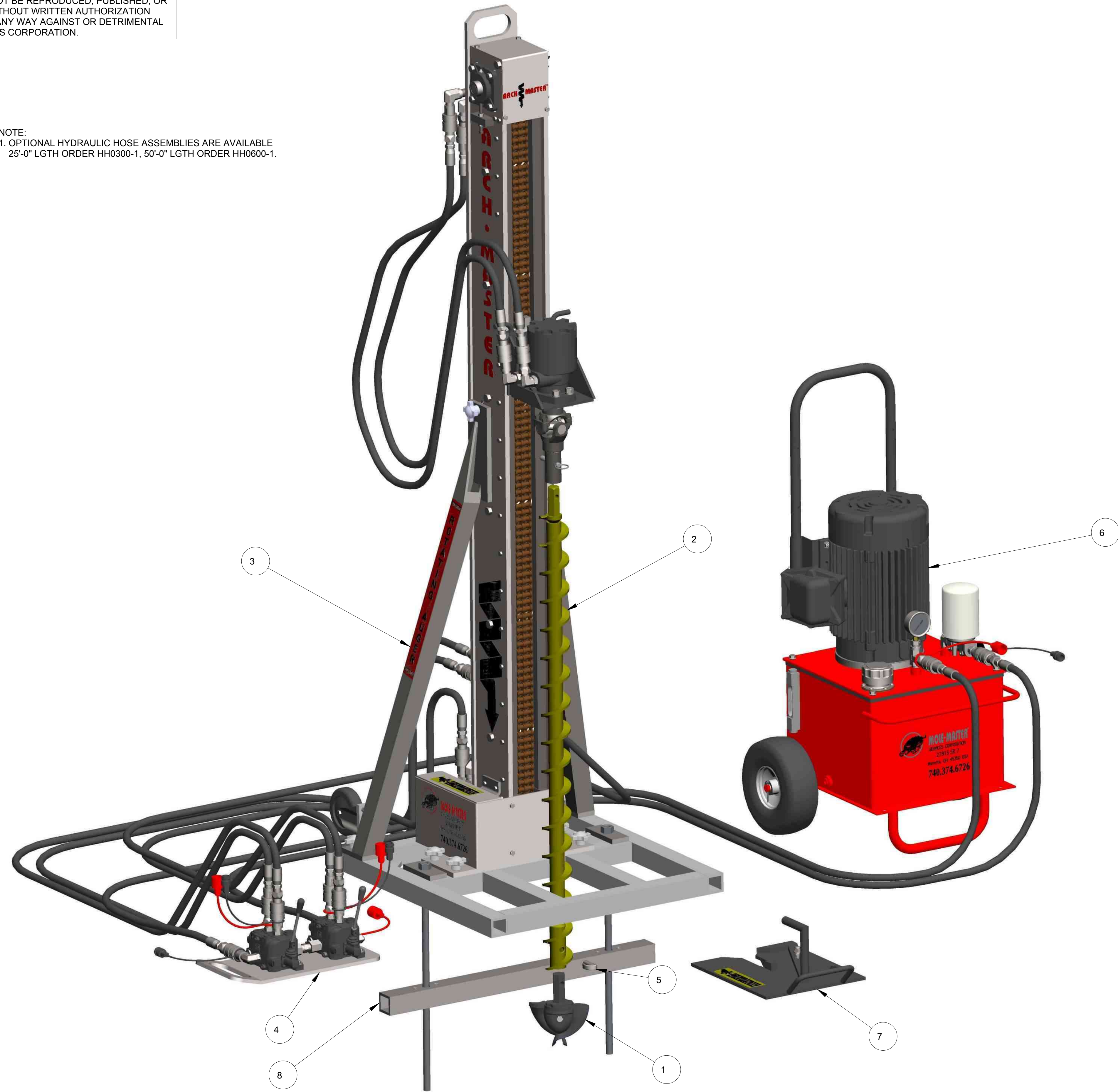


THIS MATERIAL IS THE PROPERTY OF MOLE MASTER SERVICES CORPORATION AND MAY NOT BE REPRODUCED, PUBLISHED, OR DISCLOSED TO OTHERS WITHOUT WRITTEN AUTHORIZATION AND MAY NOT BE USED IN ANY WAY AGAINST OR DETRIMENTAL TO MOLE MASTER SERVICES CORPORATION.

REVISION HISTORY			
REV	DESCRIPTION	DATE	BY

NOTE:
 1. OPTIONAL HYDRAULIC HOSE ASSEMBLIES ARE AVAILABLE
 25'-0" LGTH ORDER HH0300-1, 50'-0" LGTH ORDER HH0600-1.

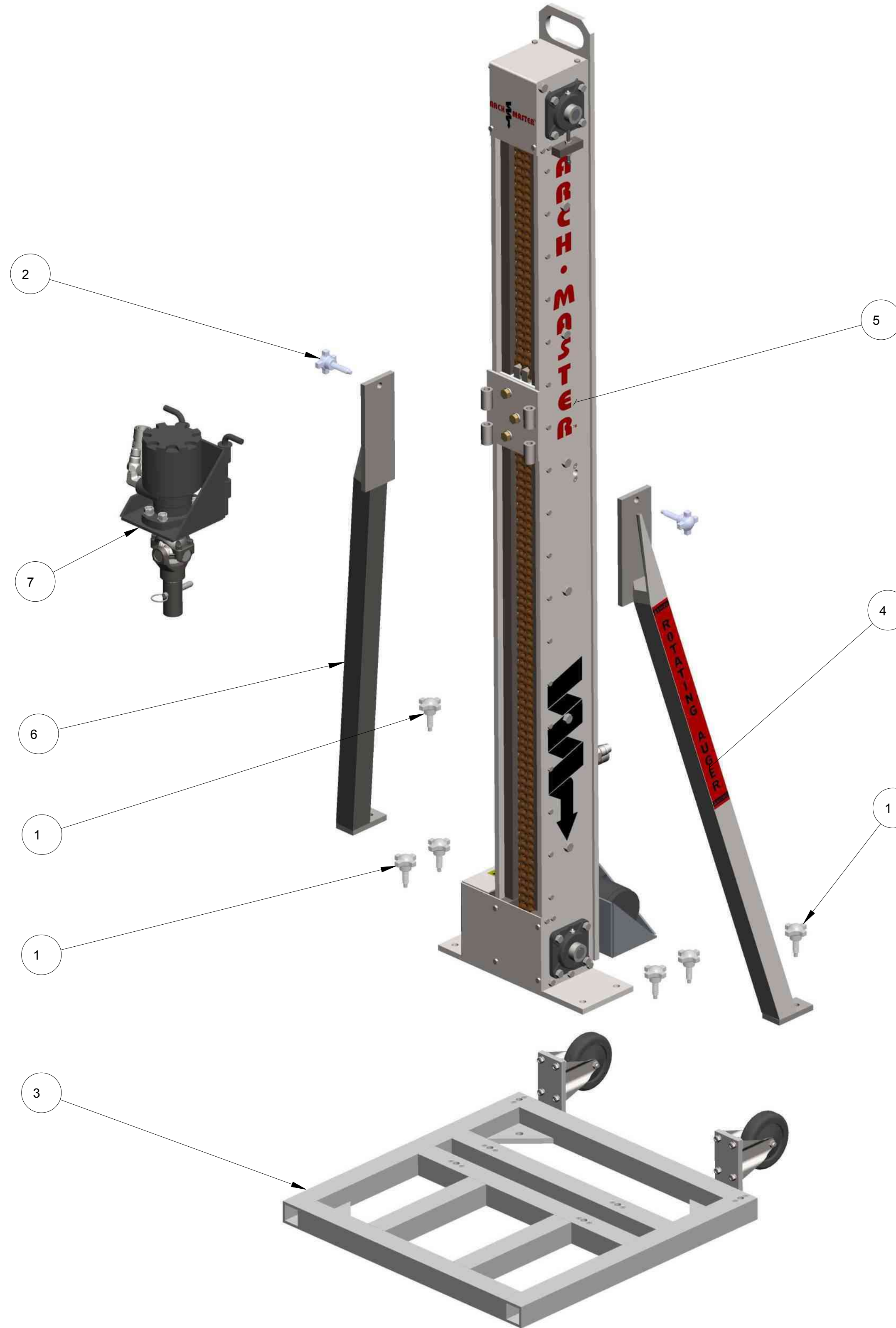
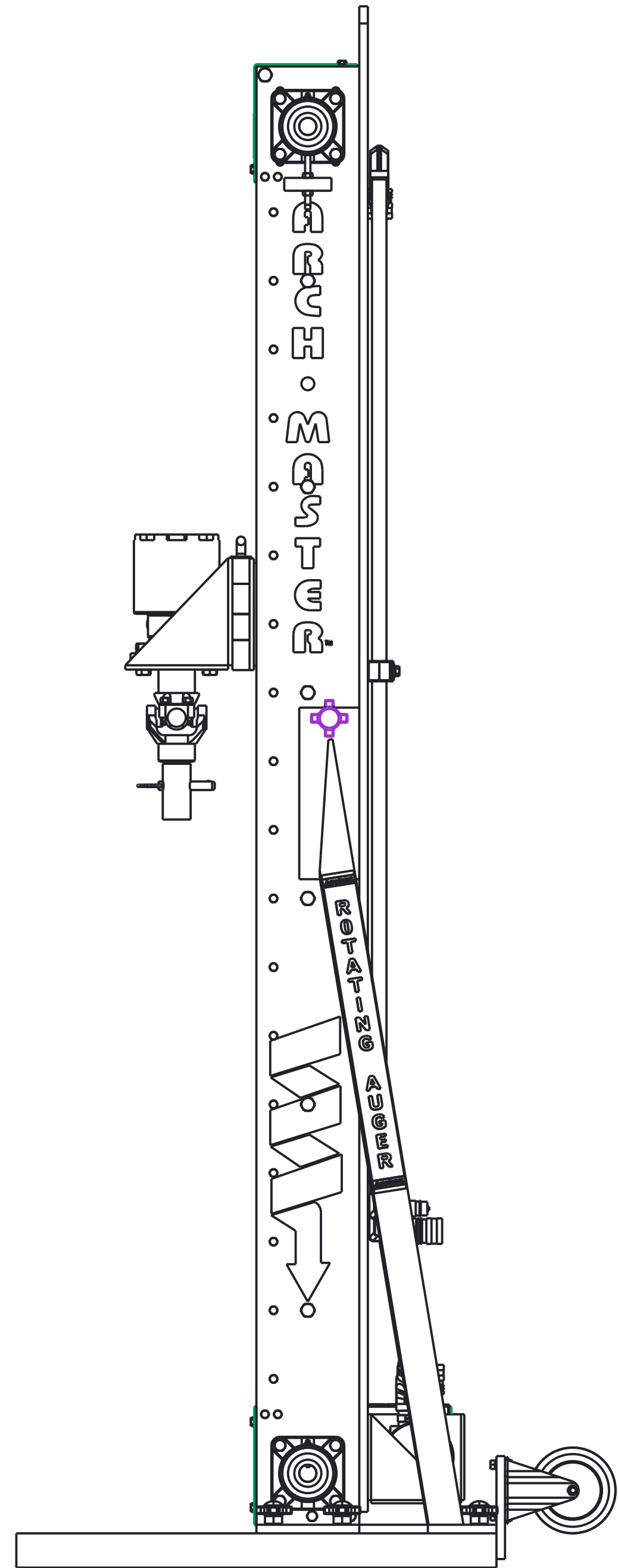
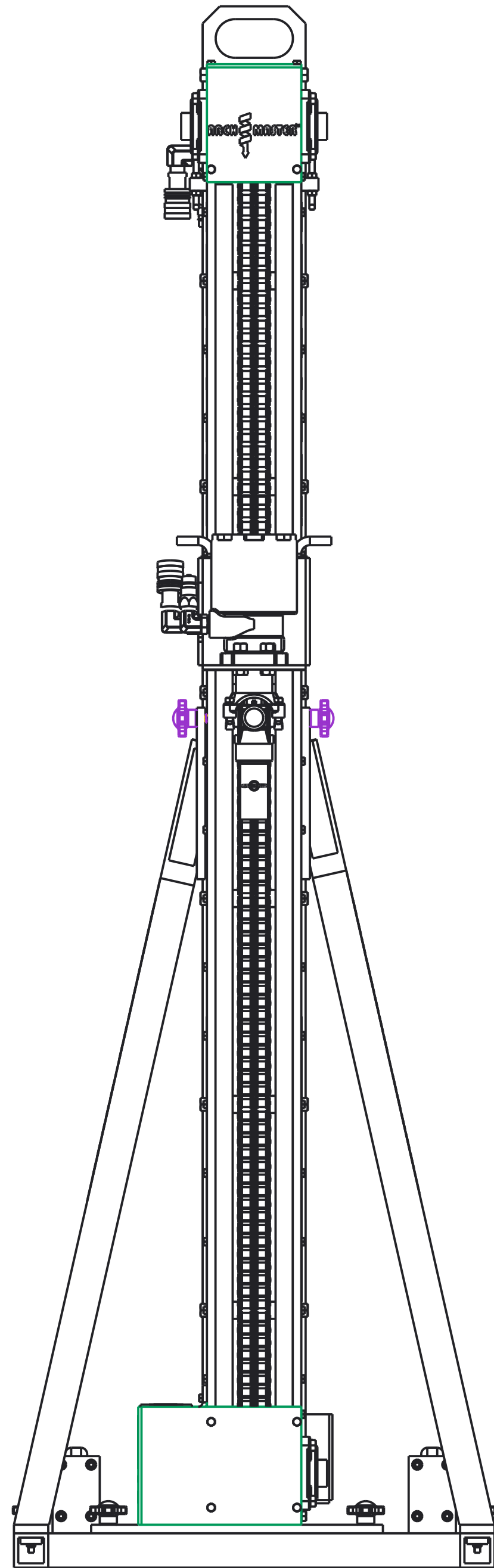


ITEM	QTY	PART NO.	DESCRIPTION
8	1	UR1000-00	UNDER ROOF LOCK BAR ASSEMBLY
7	1	SP1000-00	SLIDE PLATE ASSEMBLY
6	1	PU4000-00	POWER UNIT ASSEMBLY
5	1	AA1001-01	DRIVE PIN U-CLIP, 1-1/8" HEX
4	1	CV4000-00	CONTROL VALVE ASSEMBLY
3	1	AM1001-00	ARCH MASTER SUB-ASSEMBLY
2	1	AA1000-00	ARCH MASTER AUGER
1	1	AA1060-00	6" FISHTAIL BIT ASSEMBLY

UNLESS OTHERWISE SPECIFIED DIMENSIONS ARE IN INCHES.		APPROVALS		DATE			27815 STATE ROUTE 7 MARIETTA, OHIO 45750 USA 740-374-6726	
TOLERANCES ARE: DECIMALS .01 ± 2" .XX ± .005 FRACTIONAL ± 1/16		EPP		3-18-13	TITLE		ARCH MASTER ASSEMBLY	
DO NOT SCALE DRAWING		ENGR		-	SIZE		DWG NO. PL-AM-1	
TREATMENT		FINISH		MATERIAL		SCALE		REV.
-		-		SEE BOM		7/40		-
						SHEET		1 OF 1

THIS MATERIAL IS THE PROPERTY OF MOLE MASTER SERVICES CORPORATION AND MAY NOT BE REPRODUCED, PUBLISHED, OR DISCLOSED TO OTHERS WITHOUT WRITTEN AUTHORIZATION AND MAY NOT BE USED IN ANY WAY AGAINST OR DETRIMENTAL TO MOLE MASTER SERVICES CORPORATION.

REVISION HISTORY			
REV	DESCRIPTION	DATE	BY



ITEM	QTY	PART NO.	DESCRIPTION
7	1	RM1000-00	ROTATION MOTOR ASSEMBLY
6	1	SA1001-00	RIGHT SIDE BRACE
5	1	MA1000-00	MAST ASSEMBLY
4	1	SA1000-00	LEFT SIDE ARM
3	1	BF1000-00	BASE FRAME ASSEMBLY
2	2	030108	1/2-13 x 2", HAND KNOB
1	6	090107	1/2-13 x 1-1/2", HAND KNOB

UNLESS OTHERWISE SPECIFIED DIMENSIONS ARE IN INCHES.

TOLERANCES ARE:
 DECIMALS ANGLES
 .XX± .01 ± 2°
 .XXX± .005
 FRACTIONAL ± 1/16

DO NOT SCALE DRAWING

TREATMENT ENGR

FINISH -

MATERIAL SEE BOM

APPROVALS	DATE	27815 STATE ROUTE 7 MARIETTA, OHIO 45750 USA 740-374-6726
DRAWN EPP	03-18-13	
CHECKED		
ENGR		ARCH MASTER SUB-ASSEMBLY

SCALE 3/20

SIZE D

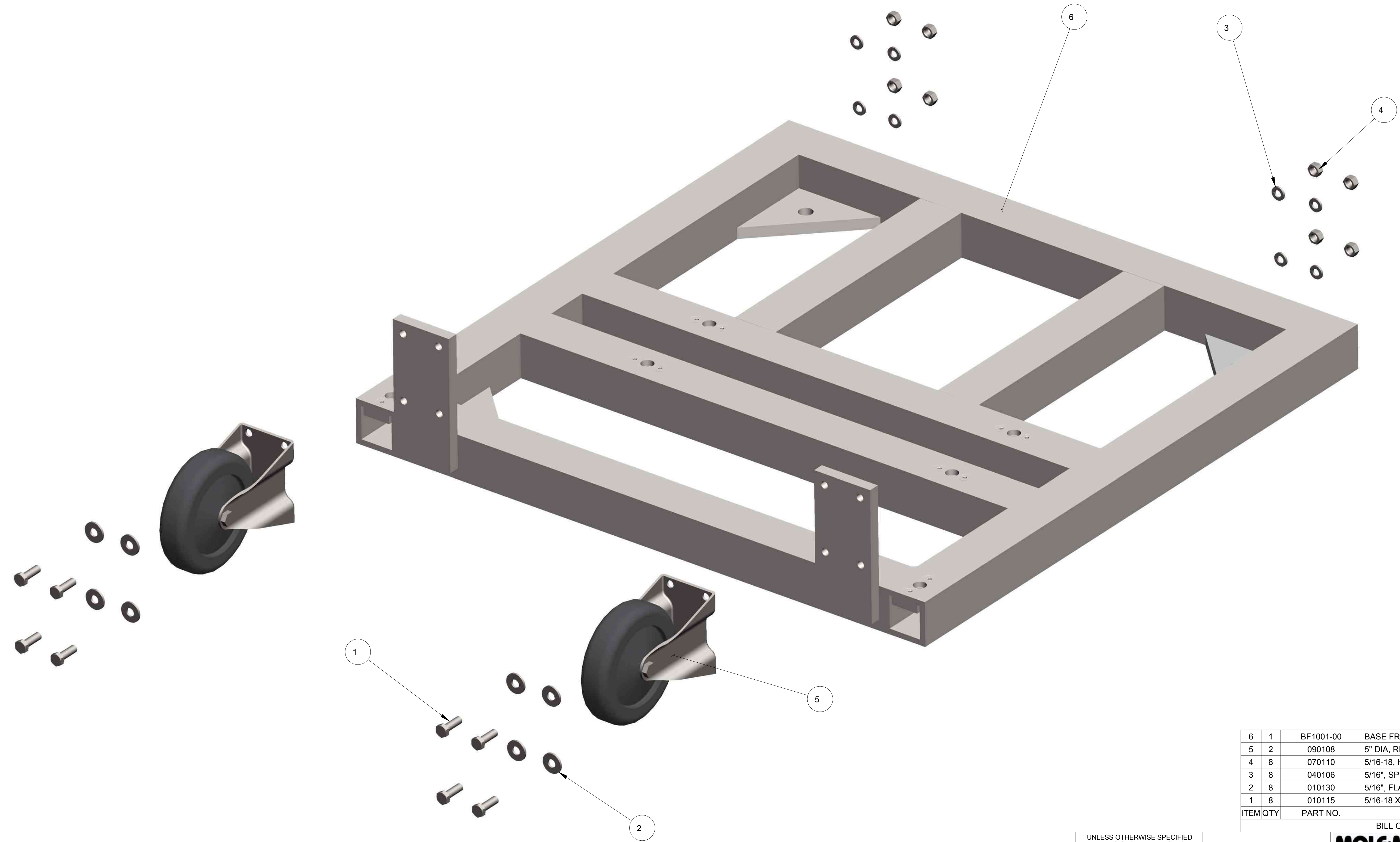
DWG NO. PL-AM-2

REV. -

SHEET 1 OF 1

THIS MATERIAL IS THE PROPERTY OF MOLE MASTER SERVICES CORPORATION AND MAY NOT BE REPRODUCED, PUBLISHED, OR DISCLOSED TO OTHERS WITHOUT WRITTEN AUTHORIZATION AND MAY NOT BE USED IN ANY WAY AGAINST OR DETRIMENTAL TO MOLE MASTER SERVICES CORPORATION.

REVISION HISTORY			
REV	DESCRIPTION	DATE	BY



ITEM	QTY	PART NO.	DESCRIPTION
6	1	BF1001-00	BASE FRAME WELDMENT
5	2	090108	5" DIA, RIGID CASTER
4	8	070110	5/16-18, HEX NUT, GR.A, ZP
3	8	040106	5/16", SPLIT LOCK WASHER, ZP
2	8	010130	5/16", FLAT WASHER, SAE, ZP
1	8	010115	5/16-18 X 1", HHCS, GR. 5, ZP

UNLESS OTHERWISE SPECIFIED DIMENSIONS ARE IN INCHES.

TOLERANCES ARE:
 DECIMALS .01 ± 2"
 .XX ± .01 ± 2"
 .XXX ± .005
 FRACTIONAL ± 1/16

DO NOT SCALE DRAWING

TREATMENT - ENGR - -

FINISH -

MATERIAL SEE BOM

APPROVALS	DATE	27815 STATE ROUTE 7 MARIETTA, OHIO 45750 USA 740-374-6726
DRAWN EPP	03-18-13	
CHECKED -	-	
ENGR -	-	ARCH MASTER BASE FRAME ASSEMBLY

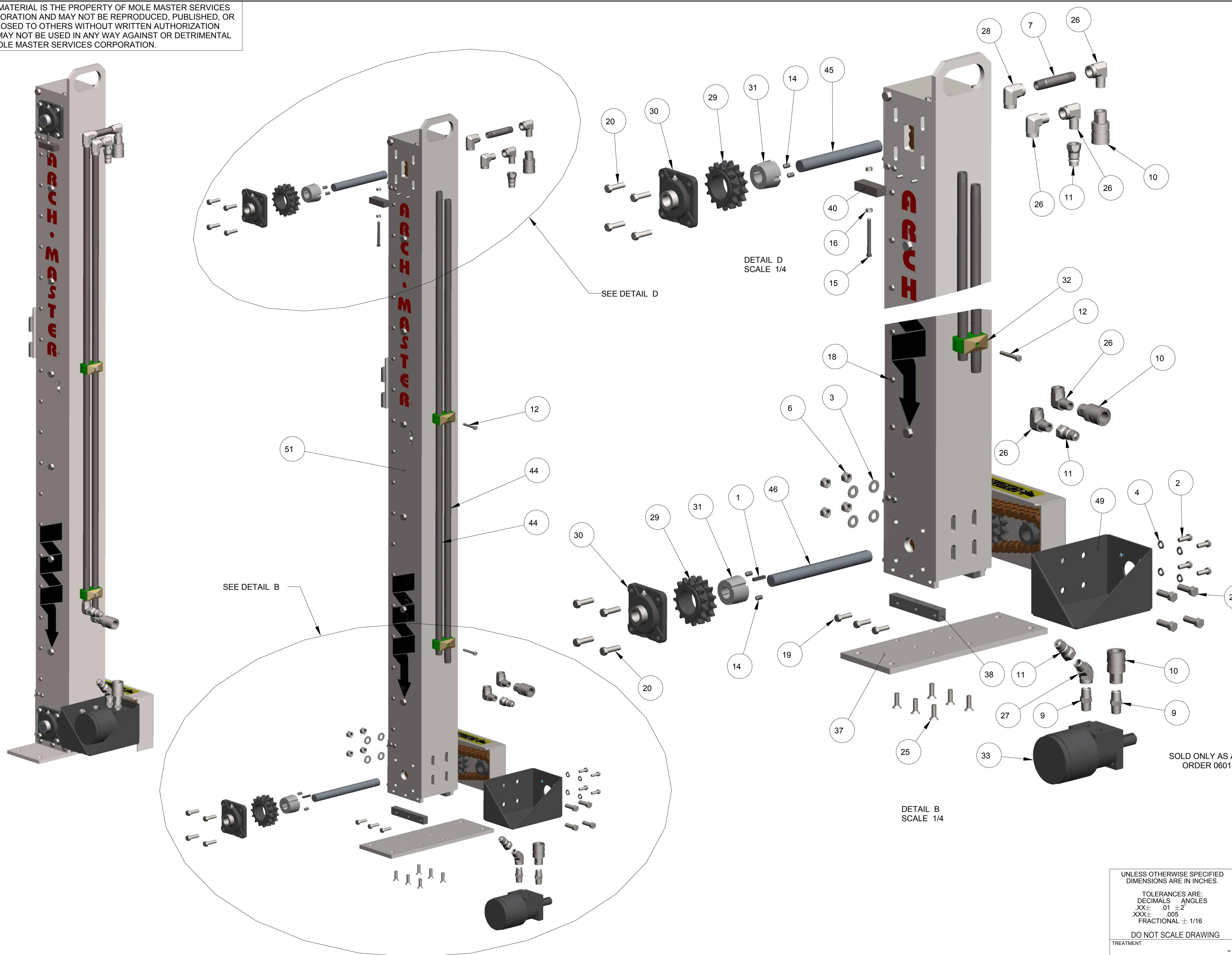
SCALE 1/2

DWG NO. PL-AM-3

SHEET 1 OF 1

THIS MATERIAL IS THE PROPERTY OF MOLE MASTER SERVICES CORPORATION AND MAY NOT BE REPRODUCED, PUBLISHED, OR DISCLOSED TO OTHERS WITHOUT WRITTEN AUTHORIZATION AND MAY NOT BE USED IN ANY WAY AGAINST OR DETRIMENTAL TO MOLE MASTER SERVICES CORPORATION.

REVISION HISTORY			
REV	DESCRIPTION	DATE	BY
A	ADDED (3) 010138 & (4) 070118	11/30/15	EPP



ITEM	QTY	PART NO.	DESCRIPTION
54	1	SB1000-03	WEAR PLATE
53	1	SB1000-02	SLIDE BLOCK SPACER
52	1	SB1000-00	SLIDE BLOCK ASSEMBLY
51	1	MW1000-00	MAST WELDMENT
50	1	MP1000-00	AUGER MOTOR ATTACHMENT PLATE
49	1	MM1000-00	LIFT MOTOR MOUNT
48	1	MA1002-00	DRIVE CHAIN
47	1	MA1001-00	DRILL CHAIN
46	1	MA1000-10	DRIVE SHAFT, 10-1/2" LG
45	1	MA1000-09	IDLE SHAFT, 8-1/2" LG
44	2	MA1000-08	1/2 PIPE, SEAMLESS, SCHD 80, 60" LG, TBE
43	1	MA1000-07	DOUBLE TOOTH SPROCKET
42	4	MA1000-06	STOP BLOCK
41	2	MA1000-05	GUIDE RAIL
40	2	MA1000-04	JACK BLOCK
39	7	MA1000-03	SPACER ROD
38	2	MA1000-02	MAST MOUNTING BLOCK
37	1	MA1000-01	MAST BASE PLATE
36	1	CG1001-01	TOP CHAIN GUARD
35	1	CG1000-00	LOWER CHAIN GUARD WELDMENT
34	2	BF1001-06	THREADED INSERT
33	1	090115	HYDRAULIC LIFT MOTOR
32	2	090106	1/2" TWIN PIPE CLAMP
31	3	090102	TAPER LOCK BUSHING
30	4	090101	FLANGE BEARING
29	3	090100	DOUBLE TOOTH-TAPER BUSHED SPROCKET
28	1	080102	8FP-8F90, FEMALE PIPE-FEMALE PIPE 90° EL
27	1	080101	8MP-8FP45, MALE PIPE -FEMALE PIPE 45° STREET EL
26	5	080100	8MP-8FP90, MALE PIPE-FEMALE PIPE 90° STREET EL
25	6	070122	3/8-16 X 1-1/2", FHSCS, 18-8 SS
24	4	070121	1/4-20 X 1", FHSCS, 18-8 SS
23	12	070118	7/16, FLAT WASHER, SMALL OD, 18-8 SS
22	16	070117	7/16-14, HEX NYLON INSERT LOCKNUT, 18-8 SS
21	18	070116	1/2-13 X 1-1/2", HHCS, 18-8 SS
20	16	070115	7/16-14 X 1-1/2", HHCS, 18-8 SS
19	6	070114	3/8-16 X 1-1/4", HHCS, 18-8 SS
18	46	070113	1/4-20 X 1", HHCS, 18-8 SS
17	8	070112	1/4-20 X 1/2", HHCS, 18-8 SS
16	4	070110	5/16-18, HEX NUT, GR. A, ZP
15	2	070106	5/16-18 X 3", SQ HD SET SCREW, CUP PT, STL
14	6	070105	3/8-16 X 5/8", SCKT. SET SCR, CUP PT, BLK. OX
13	3	070104	1/2-13 X 1-3/4", HHCS, GR.8, YZ
12	2	070100	5/16-18 X 2", HHCS, ZP
11	3	060114	QUICK COUPLER, MALE
10	3	060113	QUICK COUPLER, FEMALE
9	2	050102	8MP-8MP, MALE PIPE-MALE PIPE HEX NIPPLE
8	4	010155	1/4-20 X 3/4", FHSCS, 18-8 SS
7	1	010149	1/2" X 4", SEAMLESS PIPE NIPPLE, SCHD 80, 3000#
6	4	010140	1/2-13, HEX NUT, GR. A, ZP
5	3	010138	1/2", SPLIT LOCK WASHER, ZP
4	4	010137	3/8", SPLIT LOCK WASHER, ZP
3	4	010132	1/2", FLAT WASHER, SAE, ZP
2	4	010117	3/8-16 X 1", HHCS, GR. 5, ZP
1	3	010110	1/4" SQUARE X 1-1/4" L, MACHINE KEY, STL
ITEM	QTY	PART NO.	DESCRIPTION

UNLESS OTHERWISE SPECIFIED DIMENSIONS ARE IN INCHES.

TOLERANCES ARE:
 DECIMALS ANGLES
 .XX± .01 ±2°
 .XXX± .005
 FRACTIONAL ± 1/16

DO NOT SCALE DRAWING

TREATMENT - ENGR

FINISH -

MATERIAL -

APPROVALS: DRAWN EPP, CHECKED -

DATE: 03-18-13

SCALE: 13/80

27815 STATE ROUTE 7
 MARIETTA, OHIO
 45750 USA
 740-374-6726

MOLE-MASTER SERVICES CORPORATION

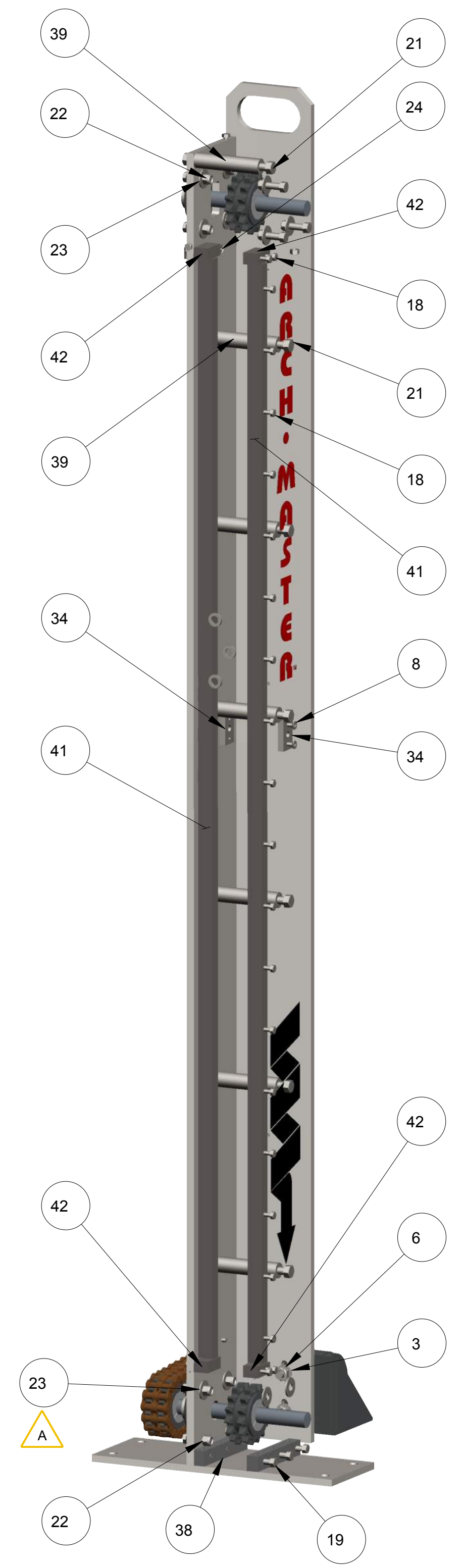
TITLE: ARCH MASTER MAST ASSEMBLY

SIZE: D, DWG NO.: PL-AM-4, REV. A

SHEET: 1 OF 2

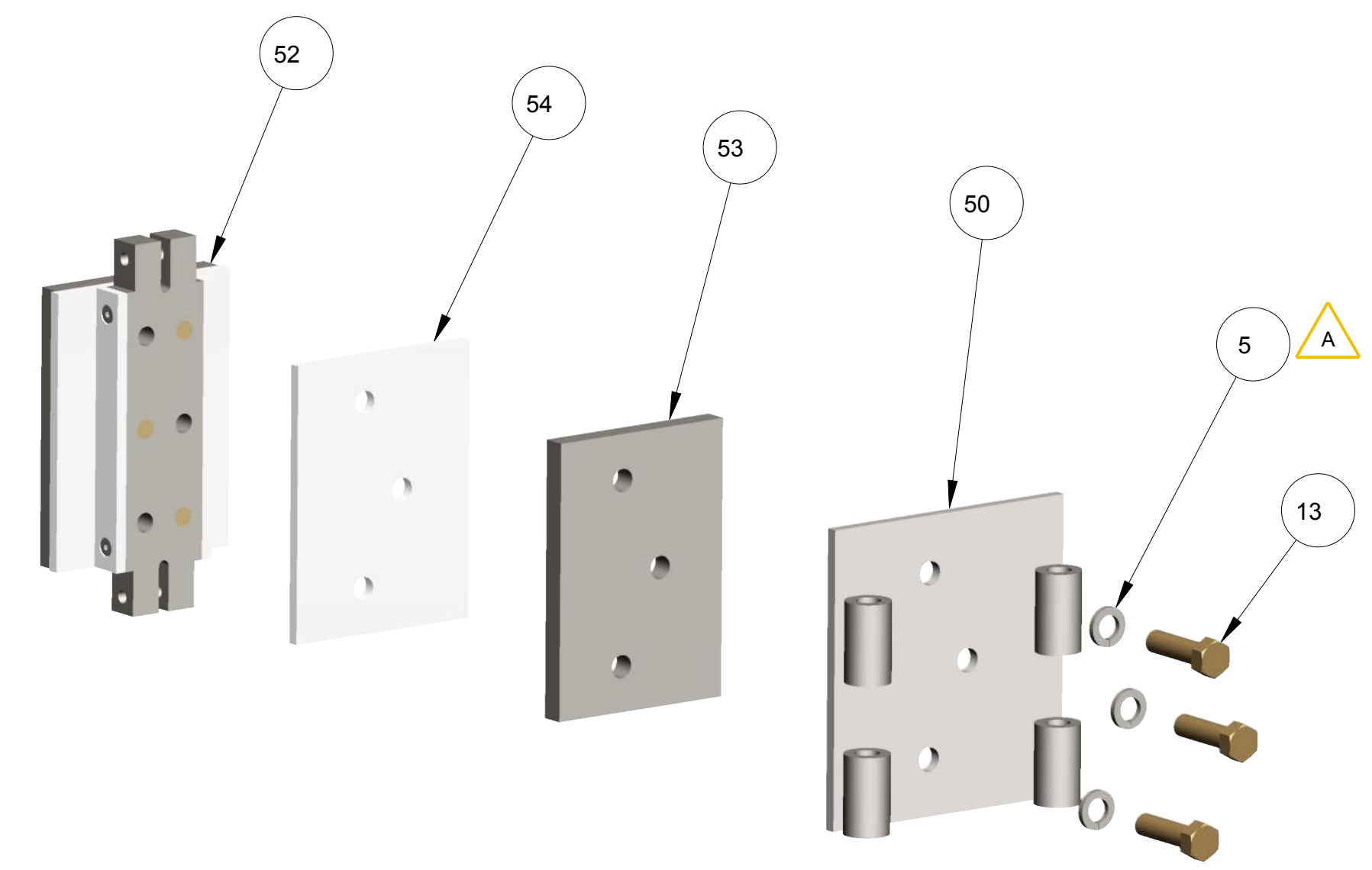
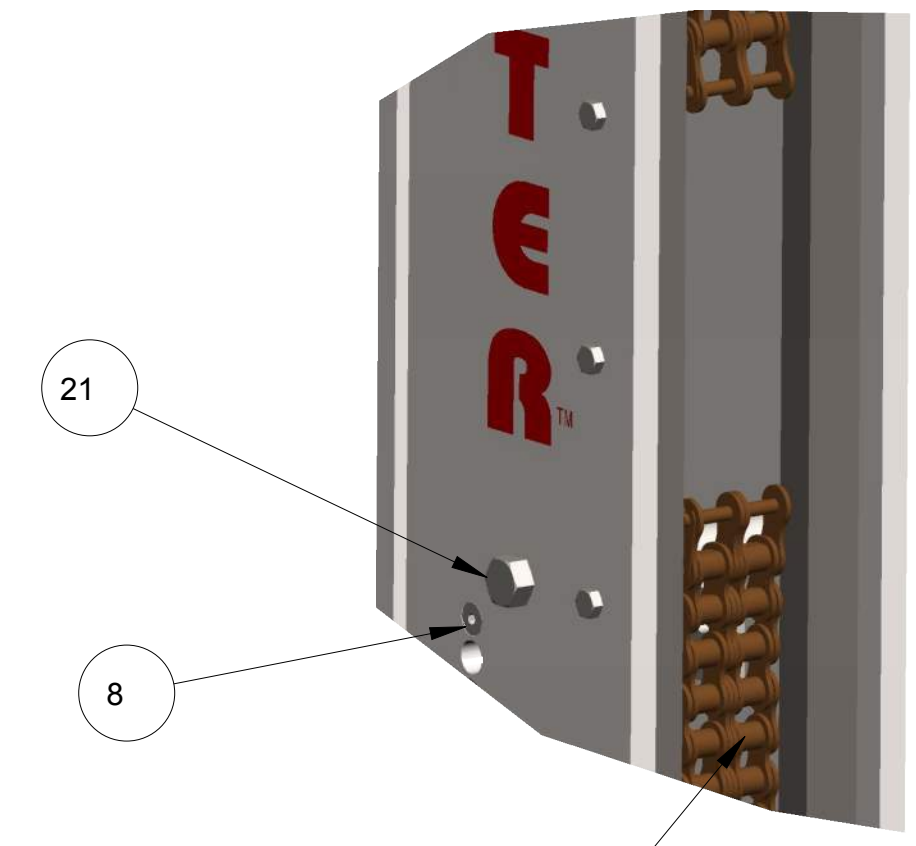
THIS MATERIAL IS THE PROPERTY OF MOLE MASTER SERVICES CORPORATION AND MAY NOT BE REPRODUCED, PUBLISHED, OR DISCLOSED TO OTHERS WITHOUT WRITTEN AUTHORIZATION AND MAY NOT BE USED IN ANY WAY AGAINST OR DETRIMENTAL TO MOLE MASTER SERVICES CORPORATION.

REVISION HISTORY			
REV	DESCRIPTION	DATE	BY
A	ADDED (3) 010138 & (4) 070118	11-30-15	EPP



CHAIN, SIDE PLATE, AND DRILL MOTOR NOT SHOWN FOR CLARITY

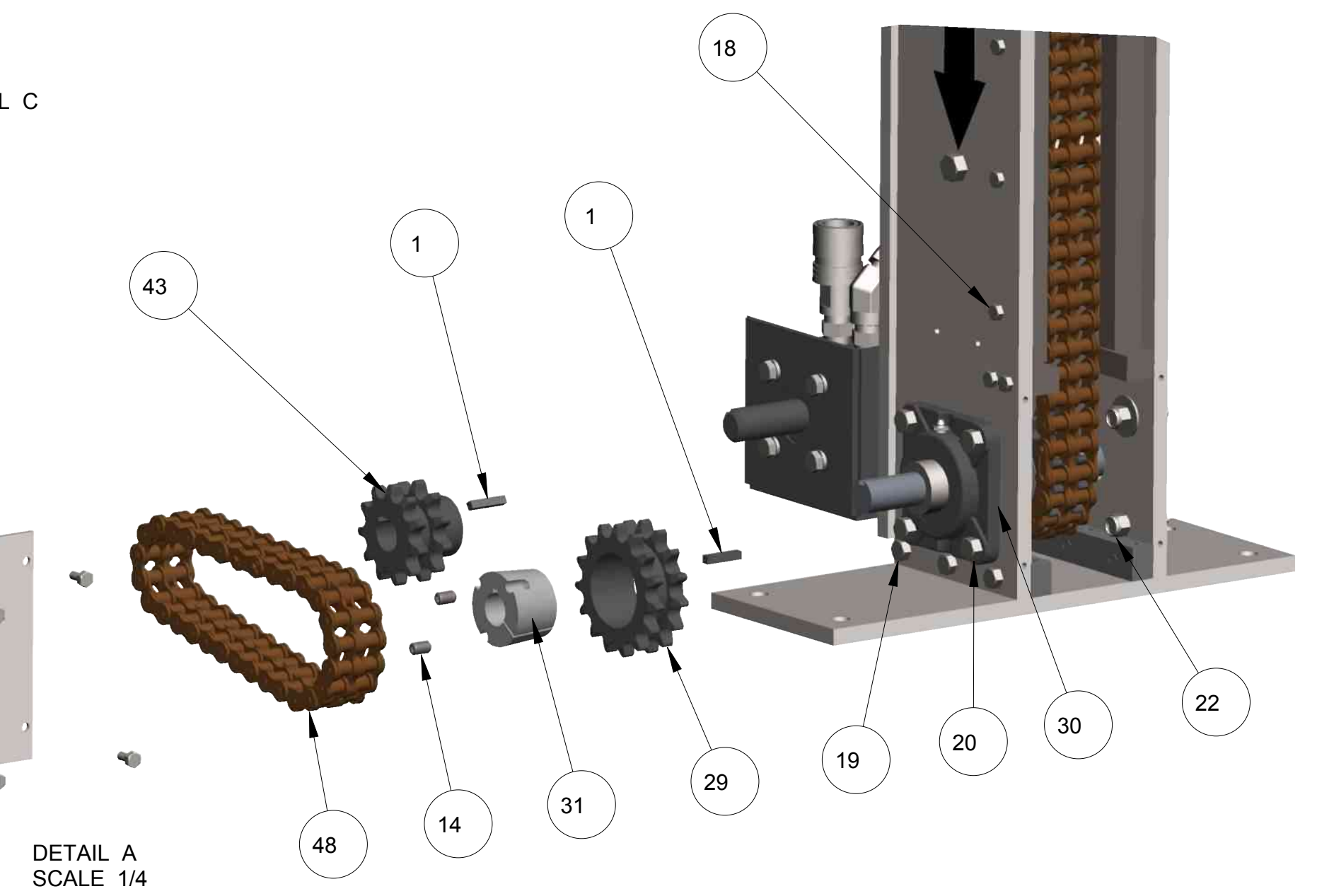
SEE DETAIL A



DETAIL C
SCALE 13/40



SEE DETAIL C

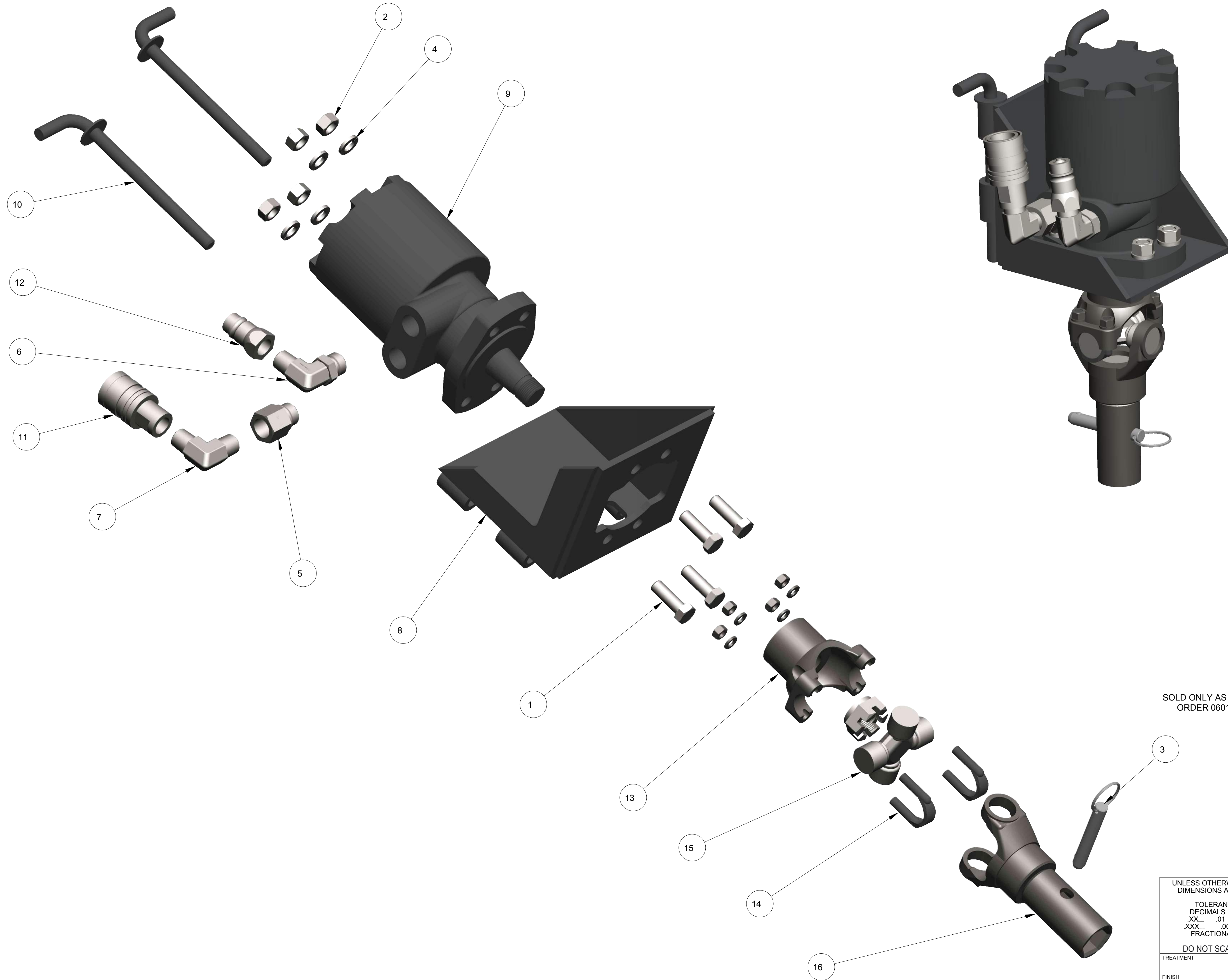


DETAIL A
SCALE 1/4

UNLESS OTHERWISE SPECIFIED DIMENSIONS ARE IN INCHES.		APPROVALS		DATE			27815 STATE ROUTE 7 MARIETTA, OHIO 45750 USA 740-374-6726	
TOLERANCES ARE: DECIMALS .01 ± 2" ANGLES .005 FRACTIONAL ± 1/16		EPP		03-18-13	TITLE		ARCH MASTER MAST ASSEMBLY	
DO NOT SCALE DRAWING		ENGR		-	SIZE		REV.	
FINISH		-		-		D		A
MATERIAL		-		-		SCALE		2 OF 2
				13/80		DWG NO.		PL-AM-4

THIS MATERIAL IS THE PROPERTY OF MOLE MASTER SERVICES CORPORATION AND MAY NOT BE REPRODUCED, PUBLISHED, OR DISCLOSED TO OTHERS WITHOUT WRITTEN AUTHORIZATION AND MAY NOT BE USED IN ANY WAY AGAINST OR DETRIMENTAL TO MOLE MASTER SERVICES CORPORATION.

REVISION HISTORY			
REV	DESCRIPTION	DATE	BY
A	050106 WAS 020110	12-19-16	EPP



ITEM	QTY	PART NO.	DESCRIPTION
16	1	YW1000-00	YOKE WELDMENT
15	1	090113	U-JOINT
14	1	090110	U-BOLT KIT
13	1	090112	TAPERED BORE END YOKE
12	1	060114	QUICK COUPLER, MALE
11	1	060113	QUICK COUPLER, FEMALE
10	2	MP1001-00	MOTOR ATTACHMENT PIN
9	1	090116	HYDRAULIC AUGER ROTATION MOTOR
8	1	MM1001-00	AUGER MOTOR MOUNT
7	1	050105	8MP-8MP90, MALE PIPE-MALE PIPE 90 D ELBOW HYD ADAPTER
6	1	050109	10MB-8MP90, MALE O RING BOSS-MALE PIPE 90 D ELBOW HYD ADAPT
5	1	050106	10MB-8FP, MALE O RING BOSS-FEMALE PIPE STRAIGHT HYD ADAPTER
4	4	010138	1/2", SPLIT LOCK WASHER, ZP
3	1	010158	1/2" X 2-1/2", DETENT RING PIN
2	4	010140	1/2-13, HEX NUT, GR. A, ZP
1	4	010120	1/2-13 X 1-1/2", HHCS, GR. 5, ZP

SOLD ONLY AS A SET
ORDER 060115

A

UNLESS OTHERWISE SPECIFIED DIMENSIONS ARE IN INCHES.

TOLERANCES ARE:
 DECIMALS .01 ± 2"
 .XX ± .01 ± 2"
 .XXX ± .005
 FRACTIONAL ± 1/16

DO NOT SCALE DRAWING

TREATMENT -

FINISH -

MATERIAL SEE BOM

APPROVALS	DATE
DRAWN	EPP 03-19-13
CHECKED	-
ENGR	-

27815 STATE ROUTE 7
 MARIETTA, OHIO
 45750 USA
 740-374-6726

MOLE-MASTER SERVICES CORPORATION

TITLE
**ARCH MASTER
 ROTATION MOTOR ASSEMBLY**

SIZE
D

DWG NO.
PL-AM-5

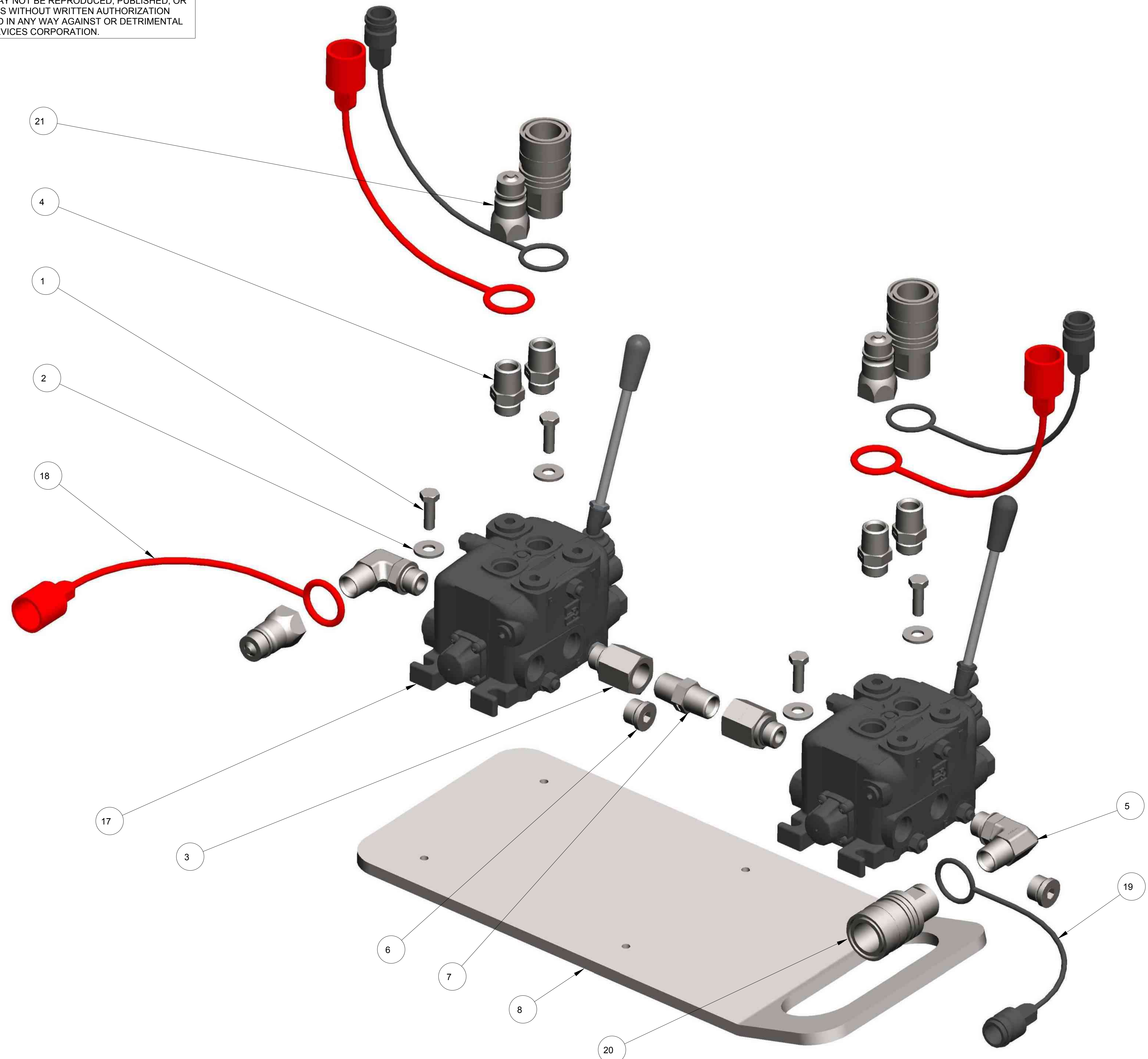
REV.
A

SCALE 1/2

CALC WT ACT WT SHEET 1 OF 1

THIS MATERIAL IS THE PROPERTY OF MOLE MASTER SERVICES CORPORATION AND MAY NOT BE REPRODUCED, PUBLISHED, OR DISCLOSED TO OTHERS WITHOUT WRITTEN AUTHORIZATION AND MAY NOT BE USED IN ANY WAY AGAINST OR DETRIMENTAL TO MOLE MASTER SERVICES CORPORATION.

REVISION HISTORY			
REV	DESCRIPTION	DATE	BY



NOTE:
 1. APPLY TEFLON TAPE TO ALL PIPE THREAD CONNECTIONS.
 2. HYDRAULIC HOSE ASSEMBLIES ARE NOT SHOWN FOR CLARITY.
 3. QUICK COUPLINGS THAT CONNECT TO HYDRAULIC HOSES ARE NOT SHOWN FOR CLARITY.

SOLD ONLY AS A SET
 ORDER 060115

ITEM	QTY	PART NO.	DESCRIPTION
21	11	060114	QUICK COUPLER, MALE
20	11	060113	QUICK COUPLER, FEMALE
19	3	050207	PLASTIC SOCKET DUST CAP, QUICK DISCONNECT COUPLING
18	3	050206	PLASTIC PLUG DUST CAP, QUICK DISCONNECT COUPLING
17	2	060116	HYDRAULIC CONTROL VALVE, SINGLE SECTION VALVE
16	1	HH0072-1_1	HOSE ASSY,#8M3K,(2) 8GE-8MP,72" LGTH
15	1	HH0072-1	HOSE ASSY,#8M3K,(2) 8GE-8MP,72" LGTH
14	1	HH0120-1_9	HOSE ASSY,#8M3K,(2) 8GE-8MP,120" LGTH
13	1	HH0120-1_8	HOSE ASSY,#8M3K,(2) 8GE-8MP,120" LGTH
12	1	HH0120-1_7	HOSE ASSY,#8M3K,(2) 8GE-8MP,120" LGTH
11	1	HH0120-1_6	HOSE ASSY,#8M3K,(2) 8GE-8MP,120" LGTH
10	1	HH0120-1_11	HOSE ASSY,#8M3K,(2) 8GE-8MP,120" LGTH
9	1	HH0120-1_10	HOSE ASSY,#8M3K,(2) 8GE-8MP,120" LGTH
8	1	CV4000-01	CONTROL VALVE MOUNTING PLATE
7	1	050102	8MP-8MP, MALE PIPE-MALE PIPE HEX NIPPLE
6	2	020112	8MB-SH-PLUG, MALE O RING BOSS PLUG HYD ADAPTER
5	2	020117	8MB-8MP90, MALE O RING BOSS-MALE PIPE 90° ELBOW HYD ADPT
4	4	020109	8MB-8MP, MALE O RING BOSS-MALE PIPE THREAD HYD ADAPTER
3	2	020110	8MB-8FP, MALE O RING BOSS-FEMALE PIPE THREAD STR HYD ADAPT
2	4	010130	5/16", FLAT WASHER, SAE, ZP
1	4	010115	5/16-18 X 1", HHCS, GR. 5, ZP

UNLESS OTHERWISE SPECIFIED
 DIMENSIONS ARE IN INCHES.
 TOLERANCES ARE:
 DECIMALS .XX ± .01 ± .02
 .XXX ± .005
 FRACTIONAL ± 1/16
 DO NOT SCALE DRAWING

APPROVALS	DATE
DRAWN	EPP 03-18-13
CHECKED	-
ENGR	-

27815 STATE ROUTE 7
 MARIETTA, OHIO
 45750 USA
 740-374-6726

MOLE-MASTER SERVICES CORPORATION

TITLE
ARCH MASTER CONTROL VALVE ASSEMBLY

SIZE
D

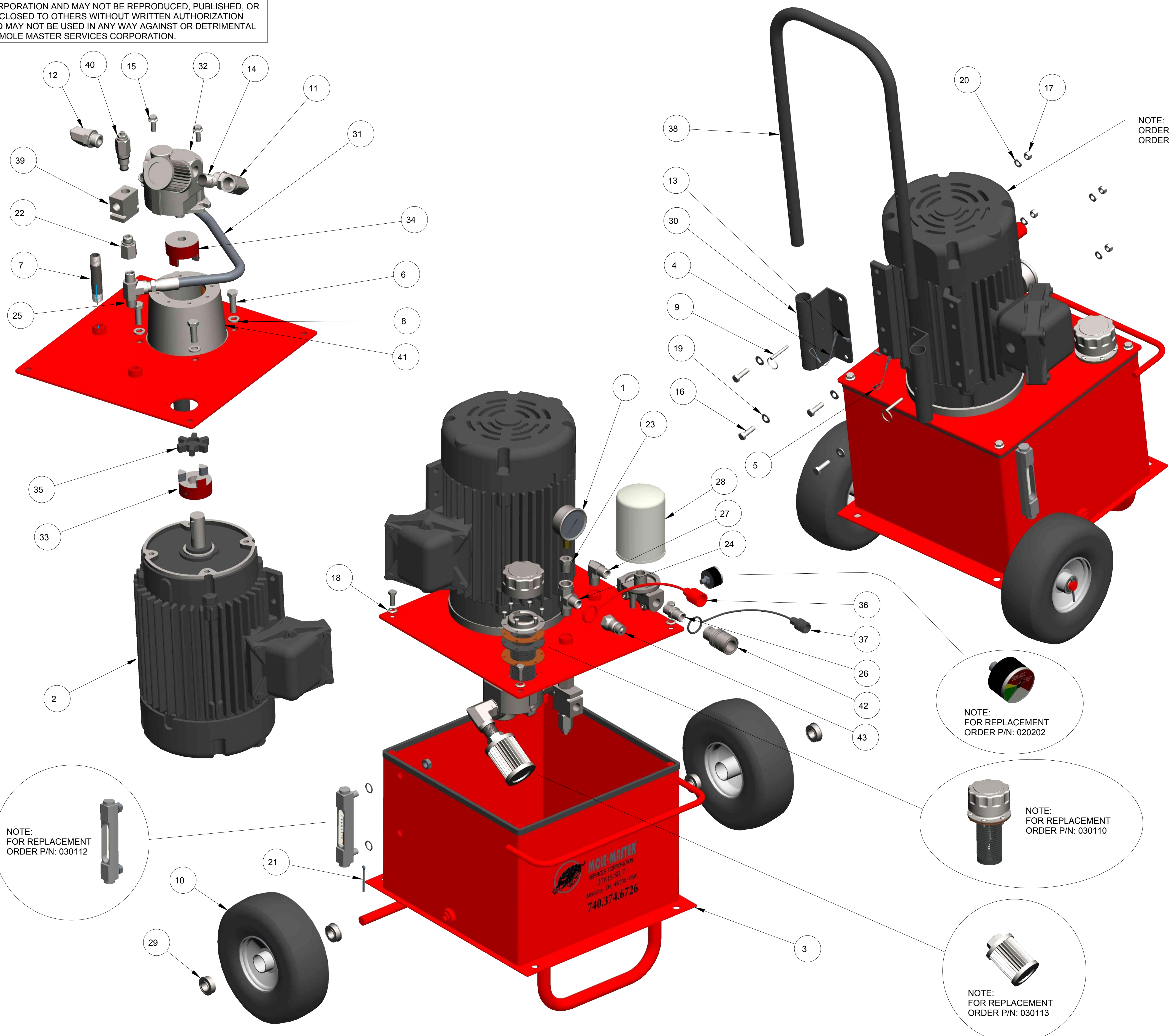
DWG NO.
PL-AM-6

SCALE
 5/8

SHEET
 1 OF 1

THIS MATERIAL IS THE PROPERTY OF MOLE MASTER SERVICES CORPORATION AND MAY NOT BE REPRODUCED, PUBLISHED, OR DISCLOSED TO OTHERS WITHOUT WRITTEN AUTHORIZATION AND MAY NOT BE USED IN ANY WAY AGAINST OR DETRIMENTAL TO MOLE MASTER SERVICES CORPORATION.

REVISION HISTORY			
REV	DESCRIPTION	DATE	BY
A	040102 WAS 010117	05-15-14	EPP
B	050102 WAS 020101, 050105 WAS 020103	05-30-14	EPP



NOTE:
ORDER P/N: 030115 FOR EXPLOSION PROOF AC MOTOR
ORDER P/N: 030139 FOR 200 & 575 VOLT ELECTRIC AC MOTOR

SOLD ONLY AS A SET
ORDER 060115

ITEM	QTY	PART NO.	DESCRIPTION
43	1	060114	QUICK COUPLER, MALE
42	1	060113	QUICK COUPLER, FEMALE
41	1	030111	PUMP MOUNT FOR ELECTRIC MOTOR
40	1	030128	PRESSURE RELIEF CARTRIDGE
39	1	030129	PRESSURE RELIEF BODY
38	1	PU3001-01	POWER UNIT HANDLE
37	1	050207	PLASTIC SOCKET DUST CAP, QUICK DISCONNECT COUPLING
36	1	050206	PLASTIC PLUG DUST CAP, QUICK DISCONNECT COUPLING
35	1	030119	LOVEJOY-SPIDER COUPLING-L099/L100SOX
34	1	030120	LOVEJOY COUPLER-L099X5/8HUB3/16
33	1	030121	LOVEJOY COUPLER-L099X1 1/8HUB1/4
32	1	090114	HYDRAULIC GEAR PUMP
31	1	HH3004-00_2	HOSE ASSY.#8M3K,(1)8GE-8MPX,(1)8GE-8MP, 18" LGTH
30	2	PU3002-00	HANDLE MOUNTING BRACKET
29	4	030104	FLANGED WHEEL BEARING, HEAVY DUTY
28	1	030122	FILTER ASSEMBLY, HYDRAULIC OIL
27	1	050105	8MP-8MP90, MALE PIPE-MALE PIPE 90 D ELBOW HYD ADAPTER
26	1	050102	8MP-8MP, MALE PIPE-MALE PIPE HEX NIPPLE
25	1	020105	8MP-8MP-8FP, MALE PIPE-MALE PIPE-FEMALE PIPE TEE HYD ADAPTER
24	1	020106	8MP-8FP-8MP, MALE PIPE-FEMALE PIPE-MALE PIPE TEE HYD ADAPTER
23	1	020102	8MP-4FP, MALE PIPE-FEMALE PIPE HEX REDUCER BUSHING HYD ADAPTER
22	1	020110	8MP-8FP, MALE O RING BOSS-FEMALE PIPE THREAD STR HYD ADAPT
21	2	010153	5/32" x 2", COTTER PIN, ZP
20	4	010137	3/8", SPLIT LOCK WASHER, ZP
19	4	010131	3/8", FLAT WASHER, SAE, ZP
18	4	010133	3/8", BONDED SEALING WASHER, 18-8 SS
17	4	010139	3/8-16, HEX NUT, GR. A, ZP
16	4	010118	3/8-16 X 1-1/4", HHCS, GR. 5, ZP
15	2	040102	3/8-16 X 1", FLG BOLT, SERRATED WASHER, GR 8.2, ZP
14	1	010154	3/4" CLOSE PIPE NIPPLE, SCHD 40, STL
13	2	010113	3/16", BLIND POP-RIVET, BUTTON HEAD, ALUM
12	1	050108	12MB-8FP90, MALE O-RING BOSS-FEMALE PIPE 90° ELBOW HYD ADAPTER
11	1	050110	12MB-12FP90, MALE O-RING BOSS-FEMALE PIPE 90° ELBOW HYD ADAPTER
10	2	030103	10" X 3" OFFSET INTEGRAL HUB TIRE
9	2	010157	1/4" X 1-1/2", DETENT RING PIN
8	4	010138	1/2", SPLIT LOCK WASHER, ZP
7	1	010149	1/2" X 4", SEAMLESS PIPE NIPPLE, SCHD 80, 3000#
6	4	010120	1/2-13 X 1-1/2", HHCS, GR. 5, ZP
5	1	010111_6	1/16" X 6", BARE CABLE, STEEL LANYARD
4	1	010111_4	1/16" X 6", BARE CABLE, STEEL LANYARD
3	1	090109	10 GALLON HYDRAULIC RESERVOIR
2	1	030138	5 HP, 1750 RPM, 3PH, TEFC GENERAL PURPOSE ELECTRIC AC MOTOR
1	1	020203	2-1/2"-3000 PSI GLY GAUGE, 1/4" NPT BOTTOM MOUNT

NOTE:
FOR REPLACEMENT
ORDER P/N: 020202

NOTE:
FOR REPLACEMENT
ORDER P/N: 030110

NOTE:
FOR REPLACEMENT
ORDER P/N: 030113

NOTE:
FOR REPLACEMENT
ORDER P/N: 030112

UNLESS OTHERWISE SPECIFIED DIMENSIONS ARE IN INCHES.

TOLERANCES ARE:
DECIMALS ANGLES
.XX± .01 ± 2°
.XXX± .005
FRACTIONAL ± 1/16

DO NOT SCALE DRAWING

TREATMENT -

FINISH -

MATERIAL SEE BOM

APPROVALS	DATE
EPP	03-18-13
CHECKED	-
ENGR	-

SCALE 1/4"

DRWG NO. PL-AM-7

REV. B

SHEET 1 OF 1

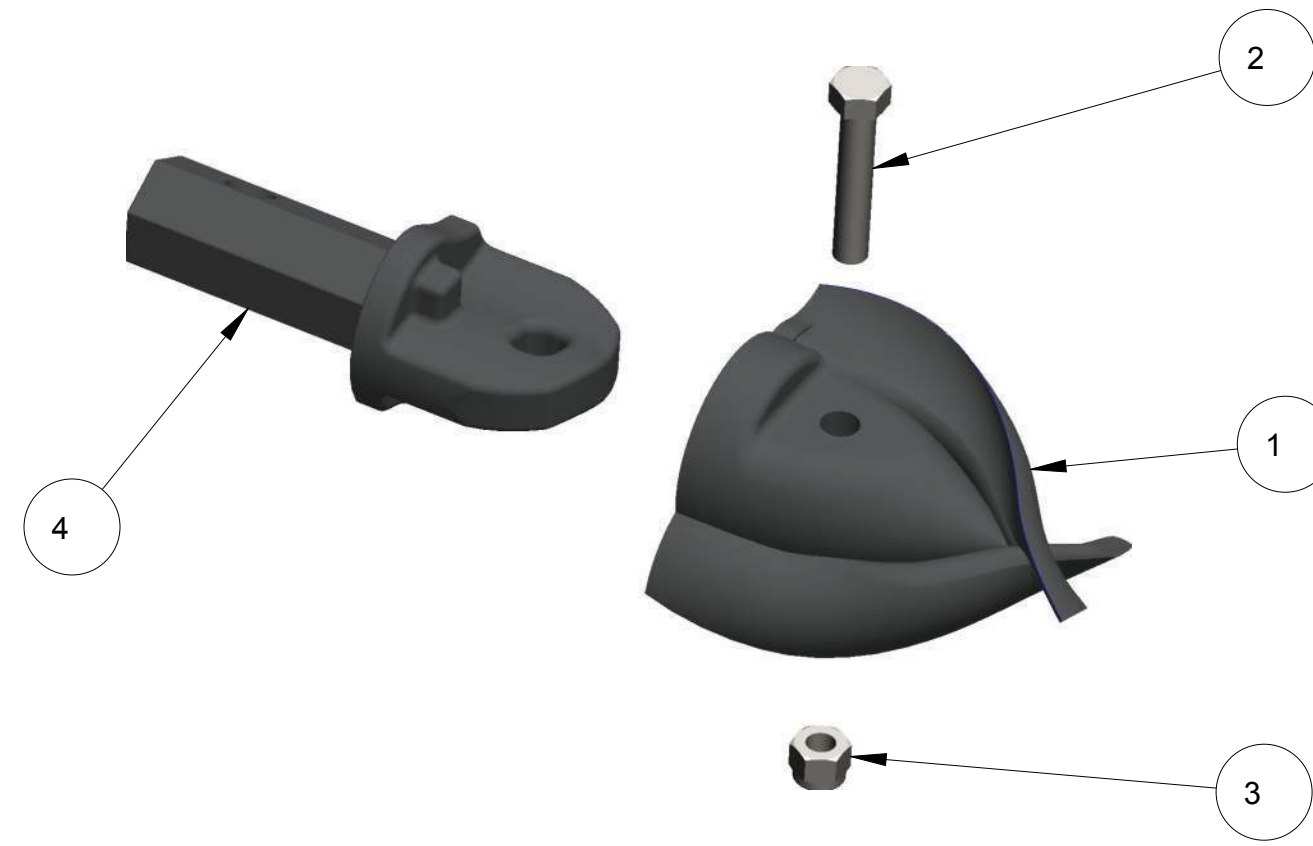
BILL OF MATERIALS

MOLE-MASTER SERVICES CORPORATION

27815 STATE ROUTE 7
MARIETTA, OHIO
45750 USA
740-374-6726

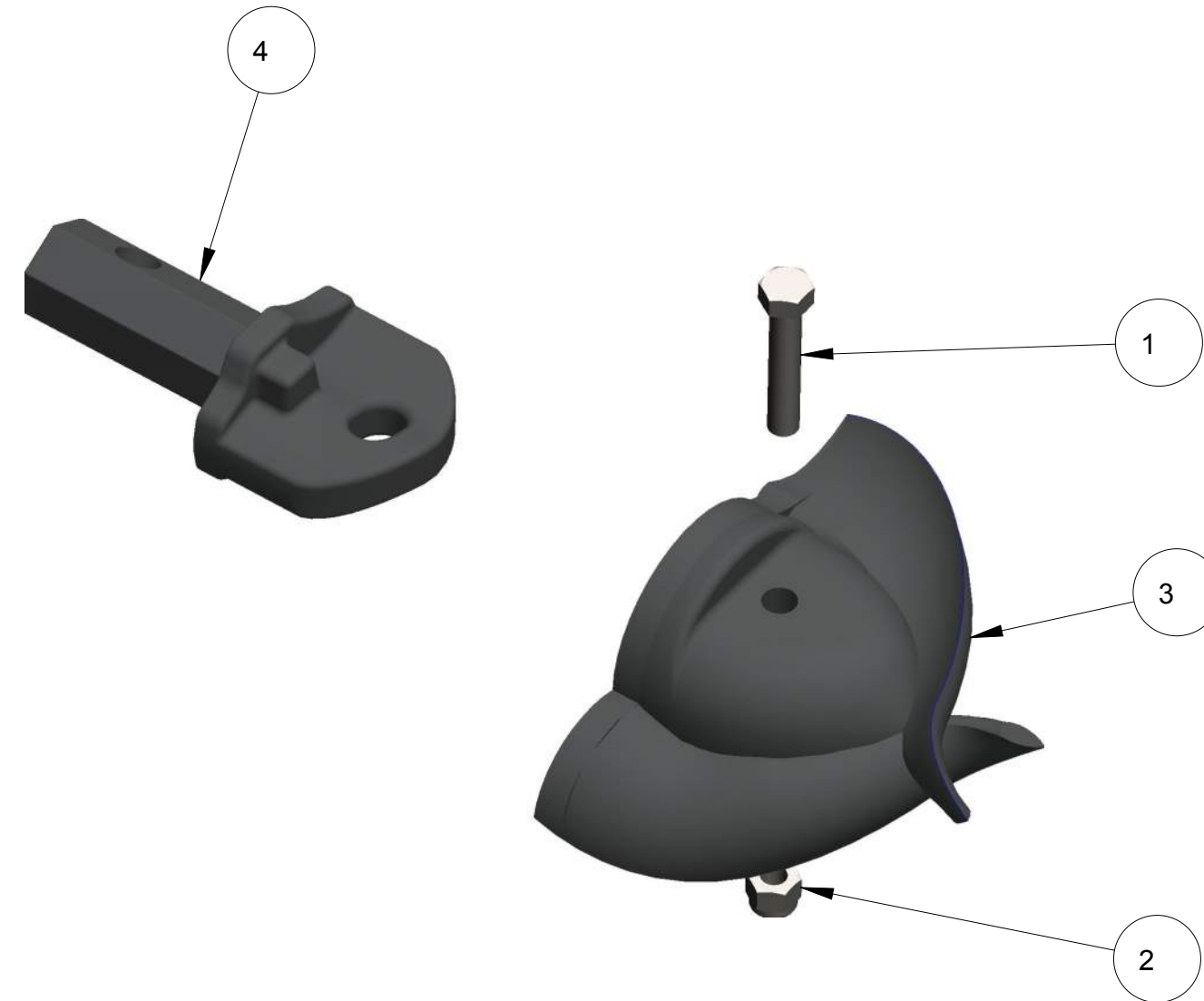
ARCH MASTER
POWER UNIT ASSEMBLY

THIS MATERIAL IS THE PROPERTY OF MOLE MASTER SERVICES CORPORATION AND MAY NOT BE REPRODUCED, PUBLISHED, OR DISCLOSED TO OTHERS WITHOUT WRITTEN AUTHORIZATION AND MAY NOT BE USED IN ANY WAY AGAINST OR DETRIMENTAL TO MOLE MASTER SERVICES CORPORATION.



AA1035-00 (3-1/2" FISHTAIL BIT ASSEMBLY)

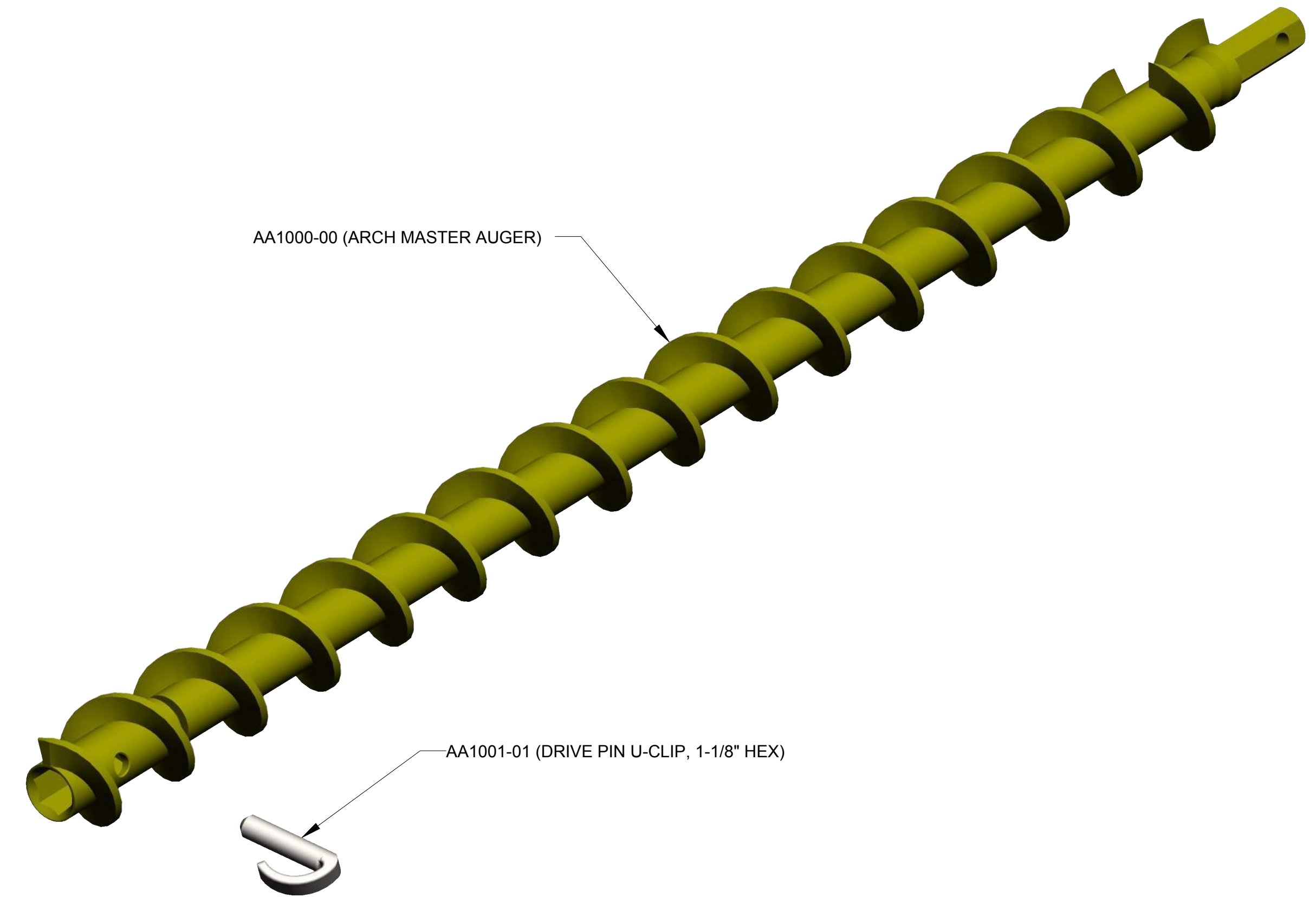
ITEM	QTY	PART NO.	DESCRIPTION
4	1	AA1035-02	MEDIUM DRIVE LUG, 1-1/8" HEX
3	1	070111	3/8-16, HEX NYLON INSERT LOCKNUT, ZP
2	1	070102	3/8-16 X 2", HHCS, GR. 5, ZP
1	1	AA1035-01	3-1/2" FISHTAIL BIT
BILL OF MATERIALS			



AA1060-00 (6" FISHTAIL BIT ASSEMBLY)

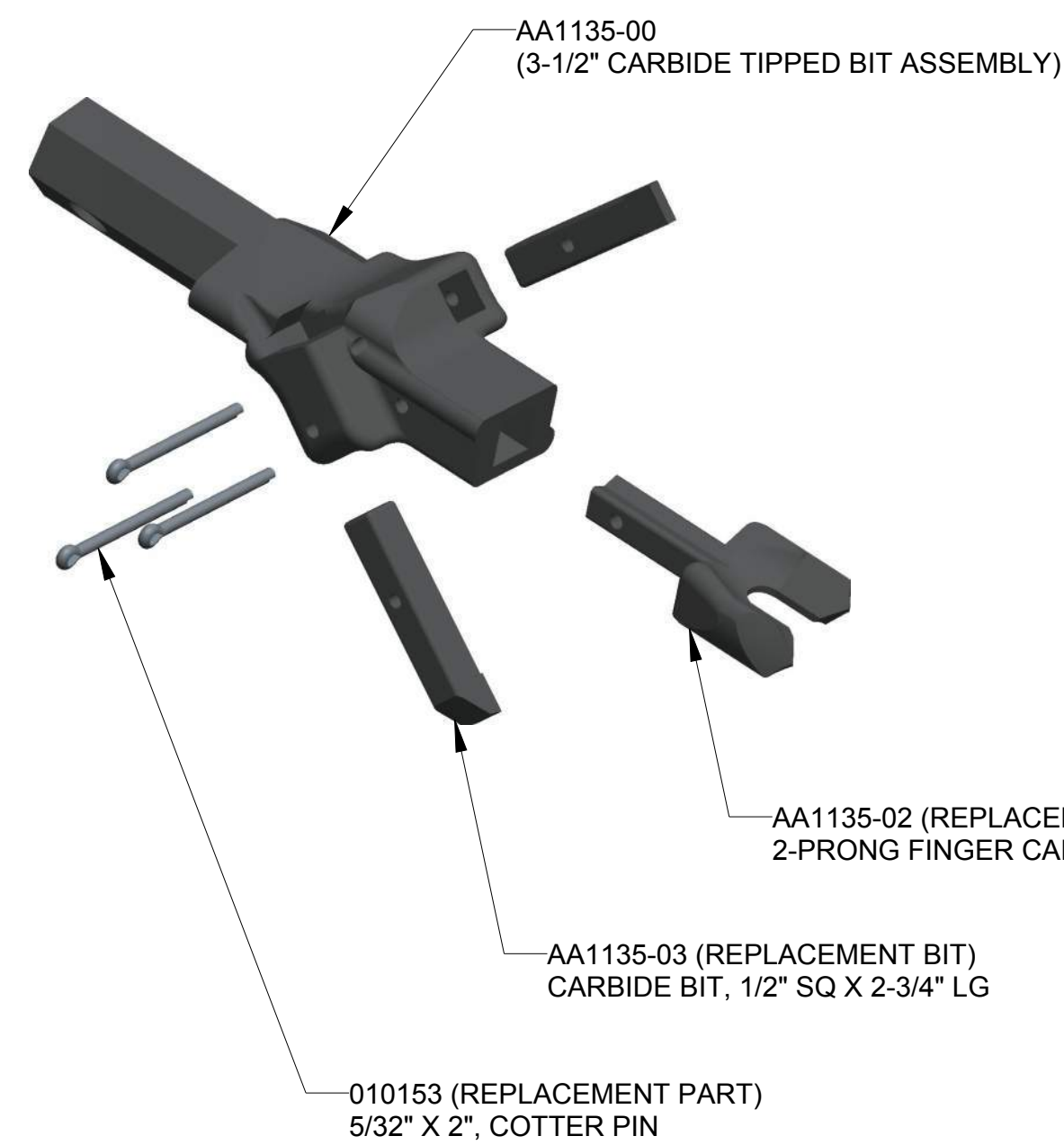
ITEM	QTY	PART NO.	DESCRIPTION
4	1	AA1060-02	LARGE DRIVE LUG, 1-1/8" HEX
3	1	AA1060-01	6" FISHTAIL BIT
2	1	070111	3/8-16, HEX NYLON INSERT LOCKNUT, ZP
1	1	070102	3/8-16 X 2", HHCS, GR. 5, ZP
BILL OF MATERIALS			

REVISION HISTORY			
REV	DESCRIPTION	DATE	BY



AA1000-00 (ARCH MASTER AUGER)

AA1001-01 (DRIVE PIN U-CLIP, 1-1/8" HEX)

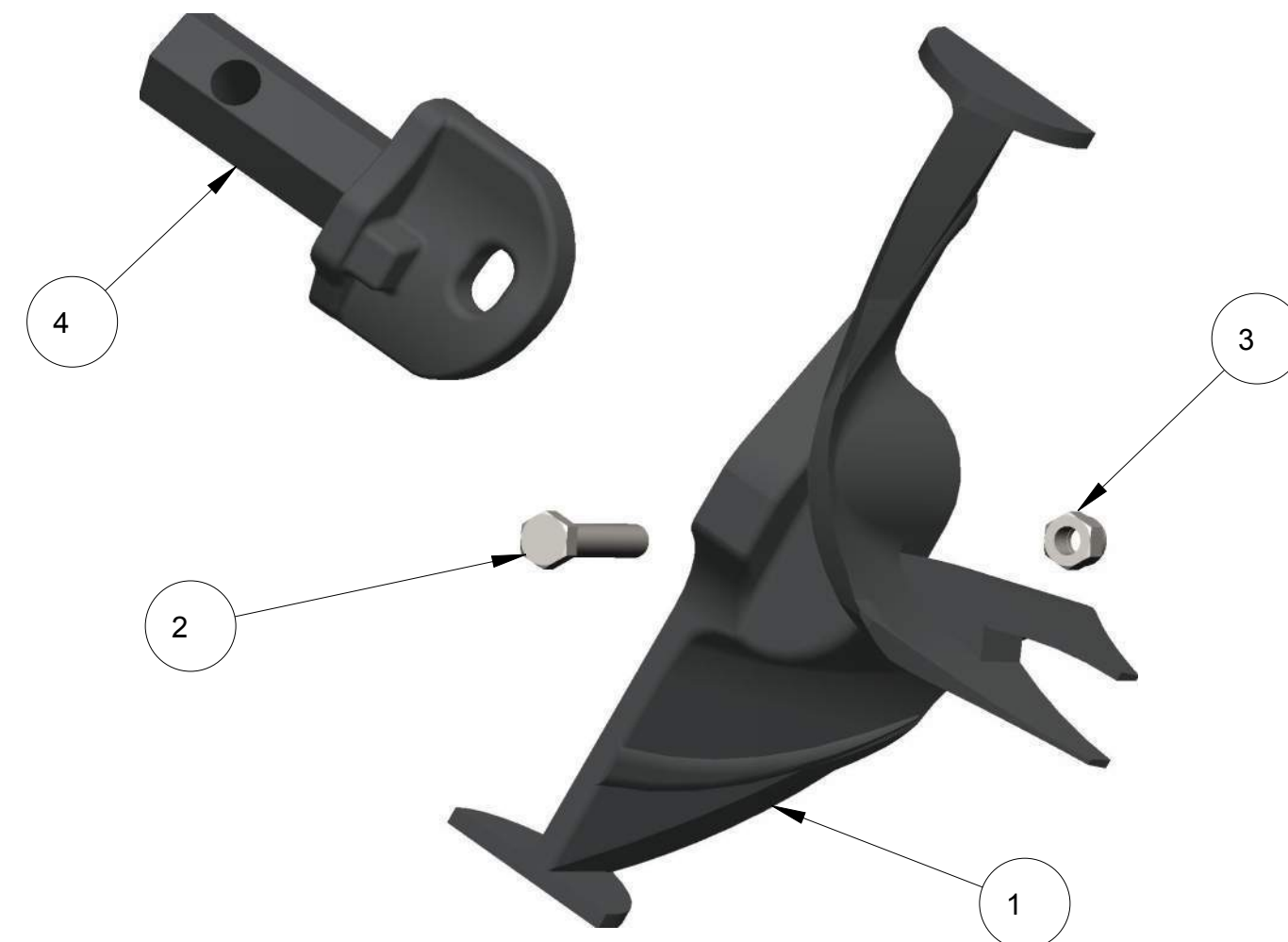


AA1135-00 (3-1/2" CARBIDE TIPPED BIT ASSEMBLY)

AA1135-02 (REPLACEMENT BIT)
2-PRONG FINGER CARBIDE BIT

AA1135-03 (REPLACEMENT BIT)
CARBIDE BIT, 1/2" SQ X 2-3/4" LG

010153 (REPLACEMENT PART)
5/32" X 2", COTTER PIN

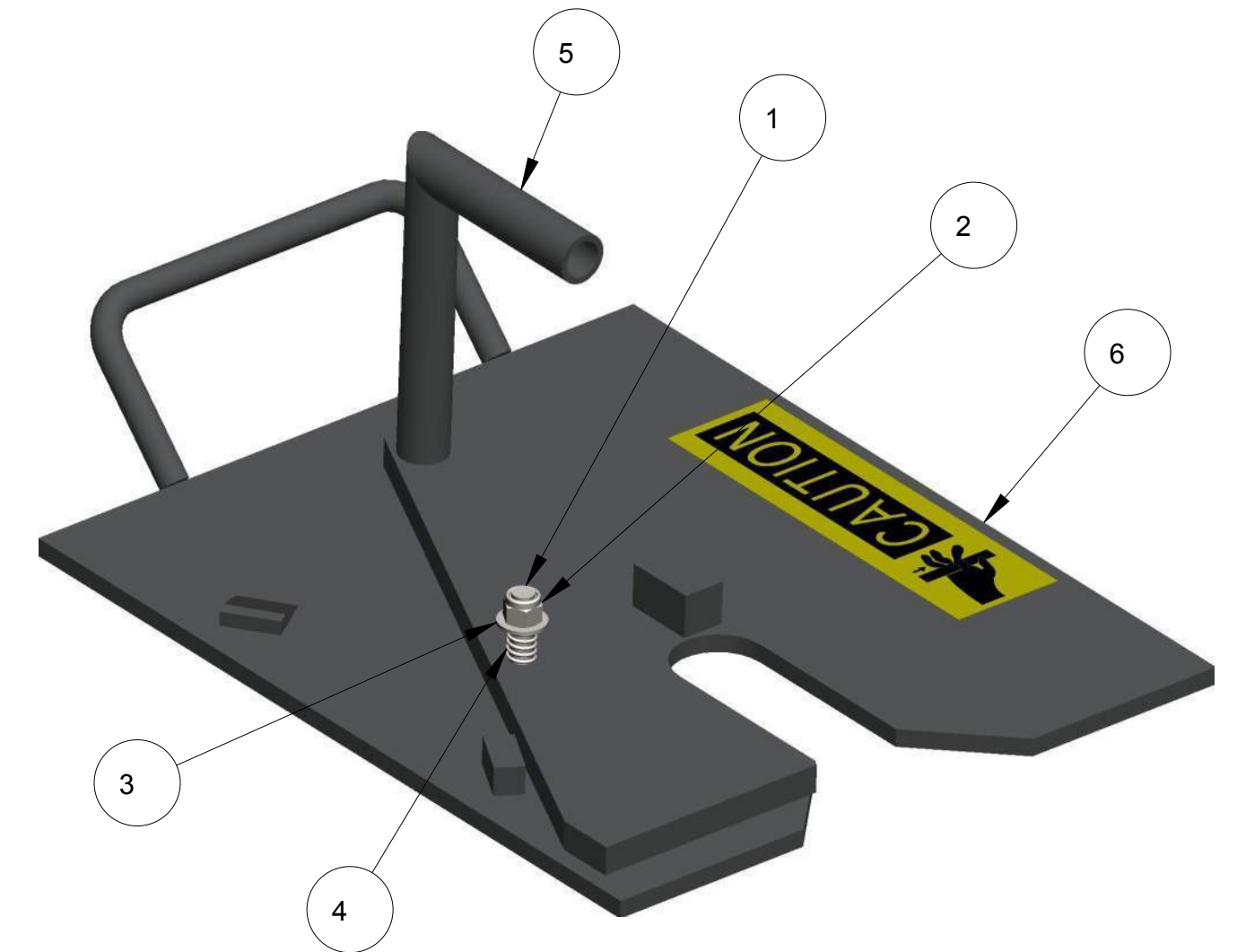


AA1100-00 (10" FISHTAIL BIT ASSEMBLY)

ITEM	QTY	PART NO.	DESCRIPTION
4	1	AA1060-02	LARGE DRIVE LUG, 1-1/8" HEX
3	1	070111	3/8-16, HEX NYLON INSERT LOCKNUT, ZP
2	1	070102	3/8-16 X 2", HHCS, GR. 5, ZP
1	1	AA1100-01	10" FISHTAIL BIT
BILL OF MATERIALS			

SP1000-00 (SLIDE PLATE ASSEMBLY)

ITEM	QTY	PART NO.	DESCRIPTION
6	1	SP1001-00	SLIDE PLATE WELDMENT
5	1	SP1002-00	HANDLE WELDMENT
4	1	SP1000-01	COMPRESSION SPRING, 1-1/2" LG
3	1	010131	3/8", FLAT WASHER, SAE, ZP
2	1	070111	3/8-16, HEX NYLON INSERT LOCKNUT, ZP
1	1	070102	3/8-16 X 2", HHCS, GR. 5, ZP
BILL OF MATERIALS			



UNLESS OTHERWISE SPECIFIED
DIMENSIONS ARE IN INCHES.

TOLERANCES ARE:
DECIMALS ANGLES
.XX ± .01 ± 2°
.XXX ± .005
FRACTIONAL ± 1/16

DO NOT SCALE DRAWING

TREATMENT - ENGR

FINISH -

MATERIAL - SEE BOM

APPROVALS	DATE
DRAWN	EPP 3-18-13
CHECKED	-



27815 STATE ROUTE 7
MARIETTA, OHIO
45750 USA
740-374-6726

TITLE
**ARCH MASTER
ASSESSORIES**

SIZE
D

DWG NO.
PL-AM-8

SCALE -

REV. -
SHEET 1 OF 1